

NE 1/4 OF SEC. 4, T. 34 N., R. 7 E. OF THE 3RD P.M.

LINE LEGEND 3VC0030TE2		
1	S 88°18'13" W	177.10'
2	N 00°40'46" W	198.95'
3	S 89°19'14" W	25.00'
4	N 00°40'46" W	55.00'
5	N 89°19'14" E	25.00'
6	S 00°40'46" E	55.00'

PROPERTY MONUMENTS FOUND
 6235+60.40, 109.90' RT, R.O.W. MKR.
 6235+94.76, 110.30' RT, I-PIPE
 6239+54.51, 109.98' RT, R.O.W. MKR.
 6245+12.04, 122.61' RT, R.O.W. MKR.
 6248+40.21, 128.38' RT, R.O.W. MKR.
 6252+17.42, 128.78' RT, R.O.W. MKR.
 6252+17.32, 128.96' RT, I-ROD
 6253+64.50, 116.39' RT, I-ROD
 6253+81.95, 116.48' RT, I-ROD
 6253+80.70, 234.62' RT, I-PIPE
 6254+42.00, 117.35' RT, I-ROD
 6256+58.58, 122.19' RT, R.O.W. MKR.
 6256+58.61, 122.76' RT, I-ROD
 6257+15.43, 180.32' RT, R.O.W. MKR.
 6257+16.57, 35.99' LT, R.O.W. MKR.

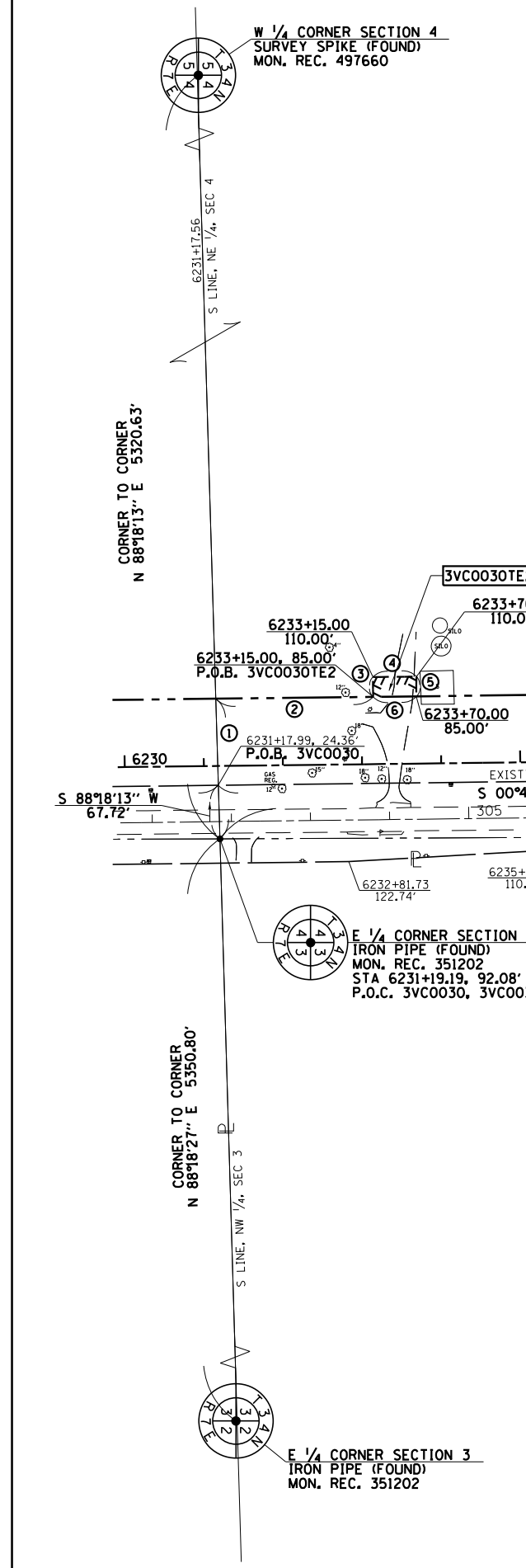
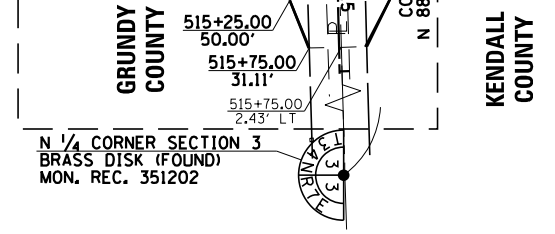
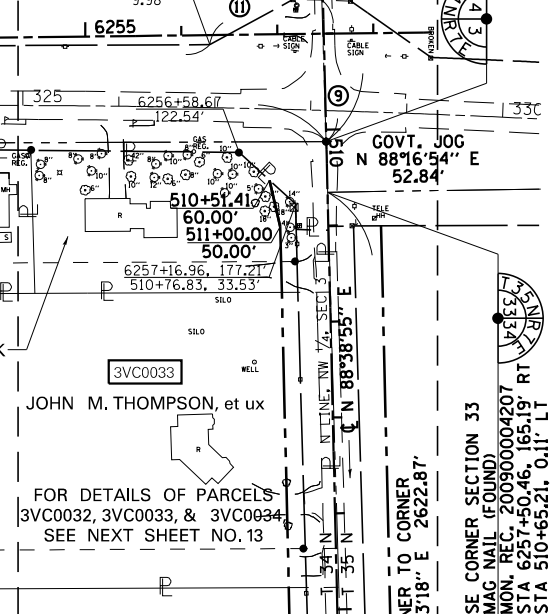
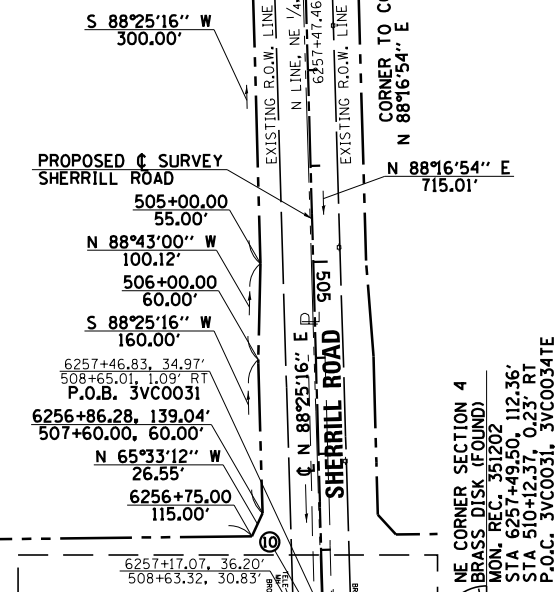
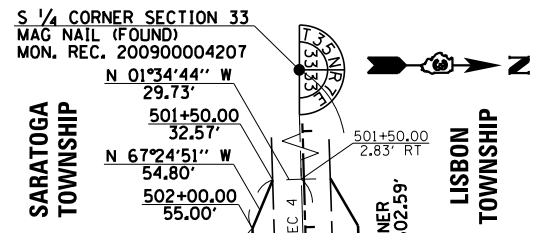
LINE LEGEND 3VC0031		
9	S 88°16'54" W	147.36'
10	S 01°40'38" W	29.78'
11	S 28°28'58" E	98.99'

PARCEL NO. 3VC0031

SARODE PUNDALLEEKA, et al
 TOTAL HOLDING = 73.980 AC. ±
 TOTAL R.O.W. REQUIRED = 4.311 AC. ±
 AREA IN EXISTING R.O.W. = 0.487 AC. ±
 NET R.O.W. REQUIRED = 3.824 AC. ±
 REMAINDER = 69.669 AC. ±

PARCEL NO. 3VC0030

DENNIS GJERDE, et al
 TOTAL HOLDING = 96.840 AC. ±
 TOTAL R.O.W. REQUIRED = 4.078 AC. ±
 REMAINDER = 92.762 AC. ±
 QUIT CLAIM AREA = 0.042 AC. ± (1832 S.F.)
 TEMPORARY EASEMENT NO. 1 = 0.056 AC. ± (2450 S.F.)
 TEMPORARY EASEMENT NO. 2 = 0.032 AC. ± (1375 S.F.)
 TE #1 PURPOSE = ENTRANCE RECONSTRUCTION
 TE #2 PURPOSE = ENTRANCE RECONSTRUCTION



NW 1/4 OF SEC. 3, T. 34 N., R. 7 E. OF THE 3RD P.M.

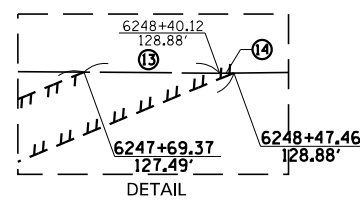
LINE LEGEND 3VC0034TE		
12	N 89°45'45" E	23.47'
13	N 00°27'03" E	70.76'
14	N 00°41'41" W	7.34'

STATE OF ILLINOIS)
 COUNTY OF MORGAN) S.S.

I, TIMOTHY C. QUIGG, HEREBY CERTIFY THAT I AM A PROFESSIONAL LAND SURVEYOR OF THE STATE OF ILLINOIS, THAT THE SURVEY OF PROPOSED IL RTE 47 WAS MADE BY ME OR UNDER MY DIRECTION AND THAT THE SURVEY IS TRUE AND COMPLETE AS SHOWN TO THE BEST OF MY KNOWLEDGE AND BELIEF, THAT ALL MONUMENTS AND MARKS ARE OF THE CHARACTER AND OCCUPY THE POSITION SHOWN THEREON, AND ARE SUFFICIENT TO ENABLE THE SURVEY TO BE RETRACED, THAT THIS PROFESSIONAL SERVICE CONFORMS TO THE CURRENT ILLINOIS MINIMUM STANDARDS FOR A BOUNDARY SURVEY.

DATED THIS th DAY OF 2012 A.D.

ILLINOIS PROFESSIONAL LAND SURVEYOR NO. 3063
 TIMOTHY C. QUIGG



HUTCHISON ENGINEERING, INC.
 1801 W. LAFAYETTE AVE.
 P.O. BOX 820
 JACKSONVILLE, IL 62651
 ILLINOIS PROFESSIONAL DESIGN
 FIRM NO. 184-000825

NOTE: GRID DISTANCES AND BEARINGS SHOWN HEREON ARE REFERENCED TO THE ILLINOIS STATE PLANE COORDINATE SYSTEM, EAST ZONE (NAD 83) 2007 ADJ ALL AREAS BASED ON GROUND DISTANCES GRID TO GROUND FACTOR = 1.00004933 GROUND TO GRID FACTOR = 0.99995067

FILE NAME: c:\pwwork\pwwork\bruckmk\d0358604\d0303808-sht-1L47r-owplan12.dgn	USER NAME: bruckmk	DESIGNED: -	REVISED: REV. 3/8/13 MKB 30TE	STATE OF ILLINOIS DEPARTMENT OF TRANSPORTATION	RIGHT OF WAY PLANS		F.A.P. RTE. 326	SECTION (110)R, BR & BR-1	COUNTY GRUNDY	TOTAL SHEETS 644	SHEET NO. 249
PLOT SCALE: 200.0000' / in.	CHECKED: -	REVISED: -	REVISED: -		PROJECT IL RTE 47	JOB NO. R-93-003-08	CONTRACT NO. 66B83	ILLINOIS FED. AID PROJECT			
PLOT DATE: 8/19/2013	DATE: -	REVISED: -	REVISED: -		SCALE: 1" = 100'	SHEET NO. 12 OF 36 SHEETS	STA. 6231+17.56 TO STA. 6257+47.46				