

MAST ARM NORTHWEST QUADRANT (C)

DETECTOR LOOP INDUCTANCE CHART

DETECTOR LOOP SYSTEM	TURNS PER LOOP	INDUCTANCE READING (MICROHENRIES)	FREQUENCY (HERTZ)	J PIN STATUS
A	4	442	29,011	OFF
B	4	230	40,217	OFF
C	4	548	26,054	ON
D	4	551	25,983	ON
E	6	624	24,416	ON
F	4	542	26,198	OFF
G	6	677	23,441	ON
H	4	593	25,046	OFF
I	4	597	24,962	ON
J	4	603	24,838	ON
K	4	556	25,866	ON
L	4	548	26,054	ON

ELECTRICAL LOAD CHART

IL RTE. 47			
INDICATION	NUMBER	WATTAGE EACH	BURN TIME (%)
RED	11	10	60
YELLOW	11	17	5
GREEN	11	11	35
YELLOW ARROW	6	6	5
GREEN ARROW	6	5	10

PROLOGIS PRKWY.			
INDICATION	NUMBER	WATTAGE EACH	BURN TIME (%)
RED	5	10	70
YELLOW ARROW	5	6	5
GREEN ARROW	5	5	10

TRAFFIC SIGNAL CABINET			
ITEM	NUMBER	WATTAGE EACH	BURN TIME (%)
CONTROLLER	1	6	100
INDUCTIVE LOOP DETECTOR UNINTERRUPTABLE	12	1.5	100
POWER SUPPLY	1	50	100
LIGHT DETECTOR AMPLIFIER	1	1.5	100

HIGHWAY LIGHTING			
ITEM	NUMBER	WATTAGE EACH	BURN TIME (%)
CONTROLLER	1	6	100
LUMINAIRE	3	400	45

THE TRAFFIC SIGNAL EQUIPMENT FOR THIS CONTRACT SHALL BE EAGLE BRAND. THE CONTROLLERS FURNISHED SHALL BE THE MOST CURRENT EAGLE BRAND.

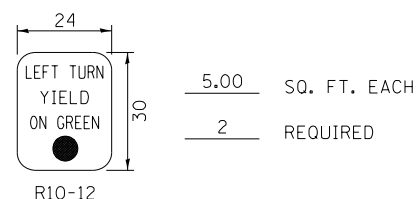
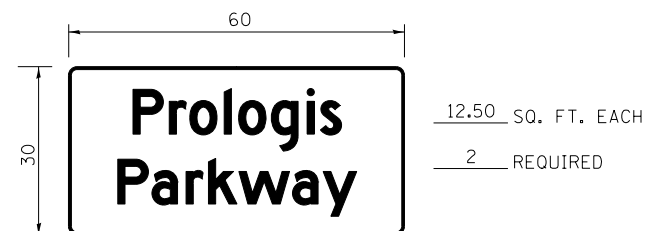
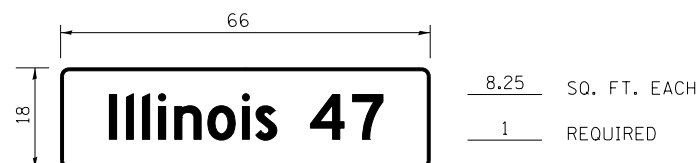
NOTIFY THE TRAFFIC SIGNAL SECTION AT (815) 434-8506 72 HOURS IN ADVANCE TO REDESIGN THE DETECTOR LOOPS, IF POSSIBLE, TO AVOID CONSTRUCTION JOINTS.

STREET SIGN DETAIL

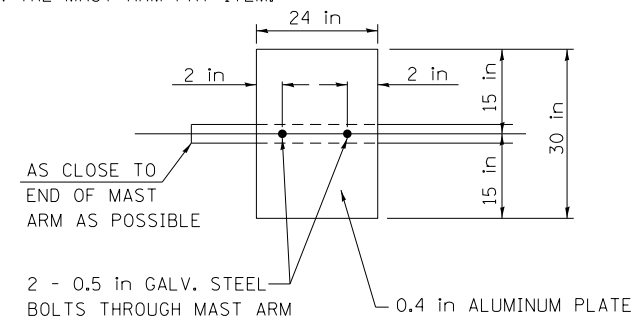
THESE STREET NAME SIGNS SHALL BE PLACED ON THE MAST ARMS PARALLEL TO THE RESPECTIVE ROUTE AS DIRECTED BY THE ENGINEER.

STREET NAME SIGNS:

1. TYPE ZZ SHEETING REQUIRED
2. WHITE/GREEN BACKGROUND
3. 3/4 in BORDER
4. 8 in SERIES D LETTERS
5. ALL DIMENSIONS ARE IN INCHES UNLESS OTHERWISE SHOWN



NOTE: DAMPENING DEVICE SHALL CONSIST OF A 24in X 30in TYPE 1, UNPAINTED ALUMINUM SIGN STOCK MOUNTED HORIZONTALLY ON TOP OF MAST ARM WITH THE 30in LENGTH PERPENDICULAR TO THE ARM. COST OF THE DAMPENING DEVICE IS INCLUDED IN THE MAST ARM PAY ITEM.



DAMPENING PLATE DETAIL (TOP VIEW) INCLUDED IN COST OF MAST ARM

NOTES:

1. WORD "GRADE" IS TO BE INTERPRETED AS TOP OF CURB. TOP OF FOUNDATION SHALL NOT BE EXPOSED MORE THAN 4 in ABOVE THE SURROUNDING GROUND.
2. ALL SIGNAL HEADS SHALL HAVE BACKPLATES.
3. FOUNDATION SHOULD BE 2 in ABOVE GROUND OR 1.0 in ABOVE CENTERLINE OF ROADWAY, WHICHEVER IS HIGHER.

FILE NAME = V:\3195\66883 (South Section)\CADD Sheets\0366883-sht-ts-09.dgn	USER NAME = bdecreene	DESIGNED - AS
		DRAWN - AS
		CHECKED - ST
SHT.PLAN	PLOT DATE = 8/6/2013	DATE - 7/15/2013



STATE OF ILLINOIS DEPARTMENT OF TRANSPORTATION

IL RTE. 47 AT PROLOGIS PRKWY. MAST ARM LOADING DIAGRAM, ELECTRICAL LOAD CHART, & SIGN DETAILS

SCALE: N/A SHEET NO. 17 OF 20 SHEETS STA. N/A TO STA. N/A

F.A.P. RTE.	SECTION	COUNTY	TOTAL SHEETS	SHEET NO.
326	(110)R, BR & BR-1	GRUNDY	644	294
CONTRACT NO. 66B83				
ILLINOIS FED. AID PROJECT				