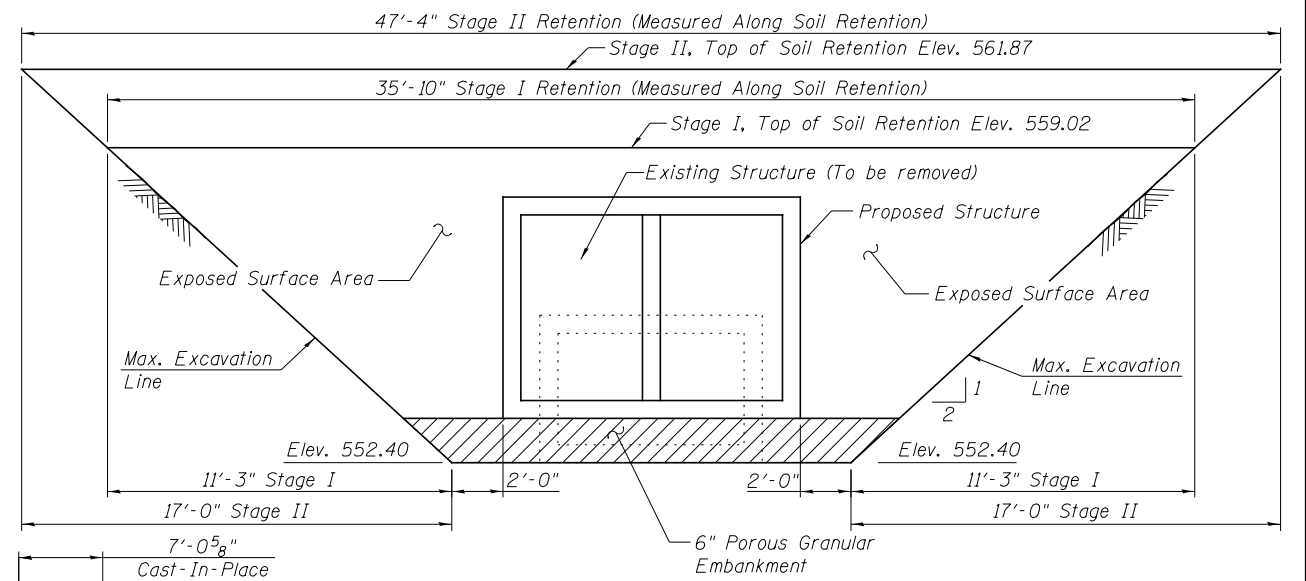
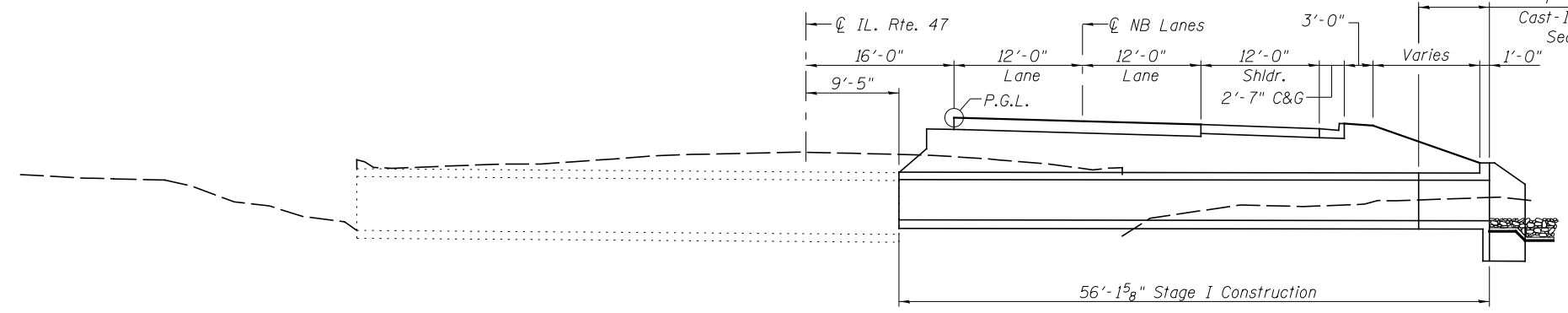


STAGE I REMOVAL
(Looking North)
(Dimensions at Rt L's to \varnothing Roadway)

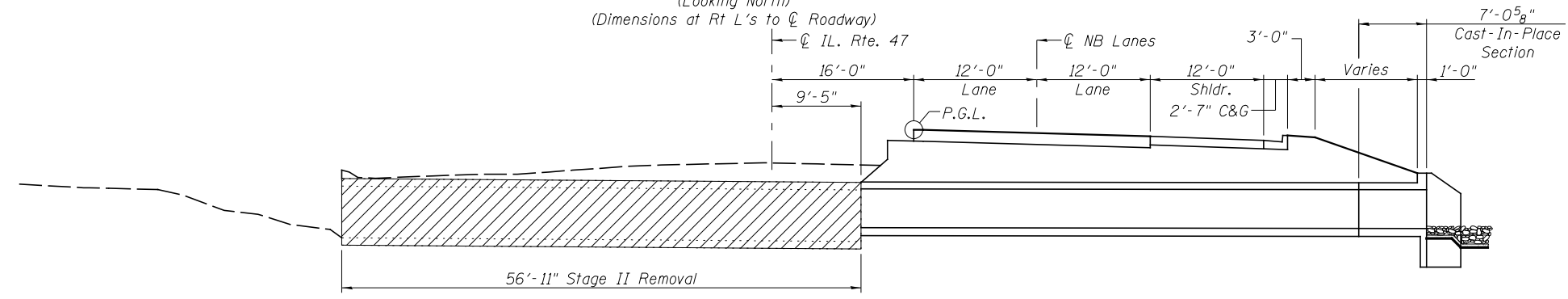


TEMPORARY SOIL RETENTION

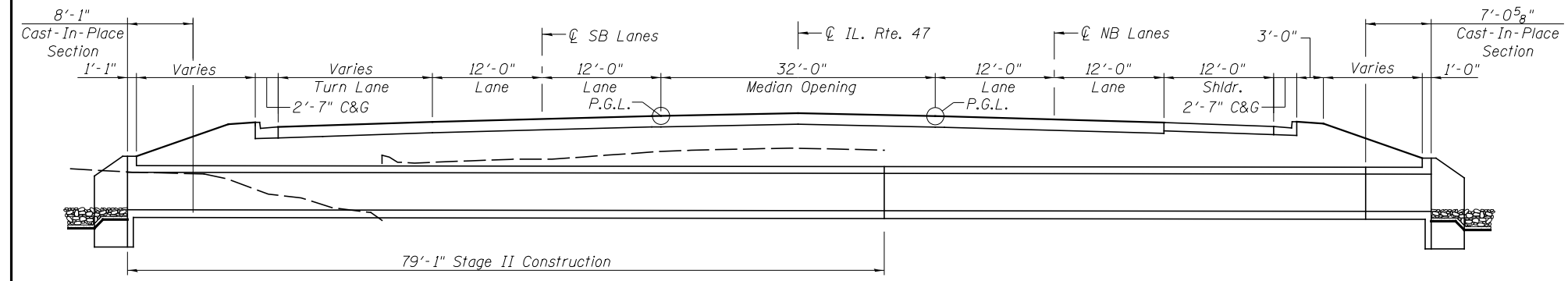
A cantilevered sheet piling design does not appear feasible and additional members or other retention systems may be necessary. The Contractor shall submit a temporary soil retention system design including plan details and calculations for review and acceptance by the Engineer. Slopes shown are parallel to \varnothing of Roadway, unless noted otherwise.



STAGE I CONSTRUCTION
(Looking North)
(Dimensions at Rt L's to \varnothing Roadway)



STAGE II REMOVAL
(Looking North)
(Dimensions at Rt L's to \varnothing Roadway)



STAGE II CONSTRUCTION
(Looking North)
(Dimensions at Rt L's to \varnothing Roadway)

REVISED -	USER NAME =	DESIGNED - PSS		STATE OF ILLINOIS DEPARTMENT OF TRANSPORTATION	GENERAL DATA STRUCTURE NO. 032-2537	F.A.P. RTE.	SECTION	COUNTY	TOTAL SHEETS	SHEET NO.
REVISED -	FILE NAME =	CHECKED - VPT				326	(110)R, BR & BR-1	GRUNDY	644	323
REVISED -	PLOT SCALE =	DRAWN - AJF				CONTRACT NO. 66B83				
REVISED -	PLOT DATE =	CHECKED - VPT				ILLINOIS FED. AID PROJECT				