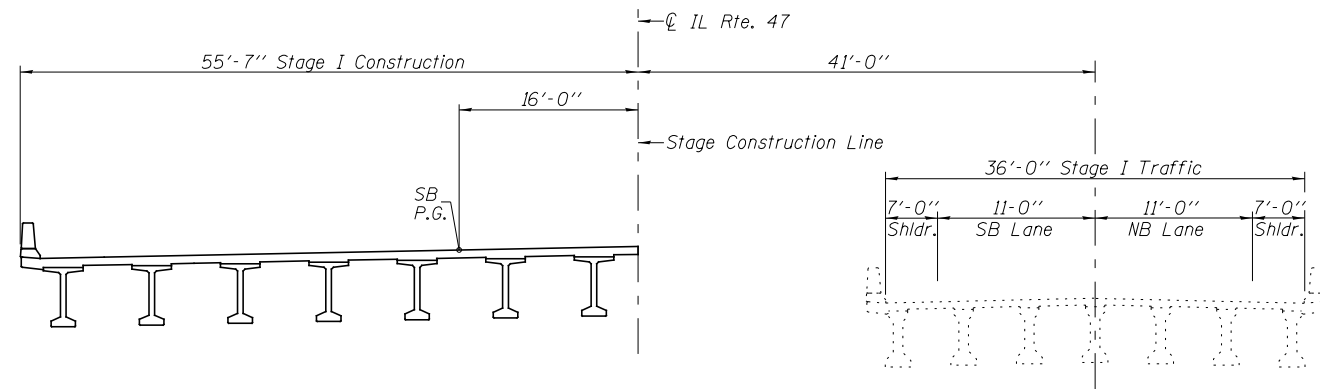
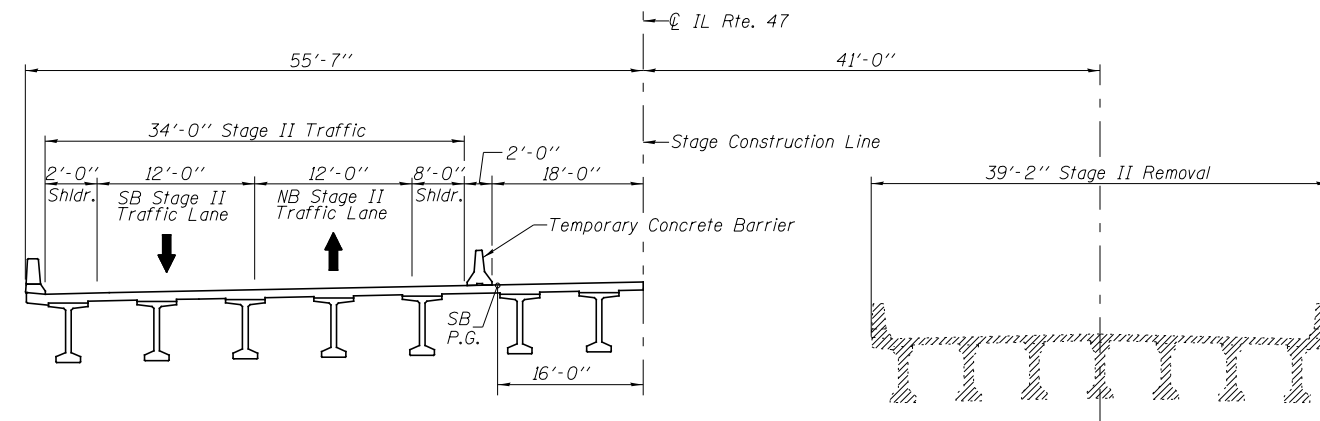


Notes:
 See Sheet 4 of 32 for Temp. Concrete Barrier Details.
 See Roadway Plans for quantity of Temp. Concrete Barrier.
 Existing utilities to be relocated by others prior to bridge construction.

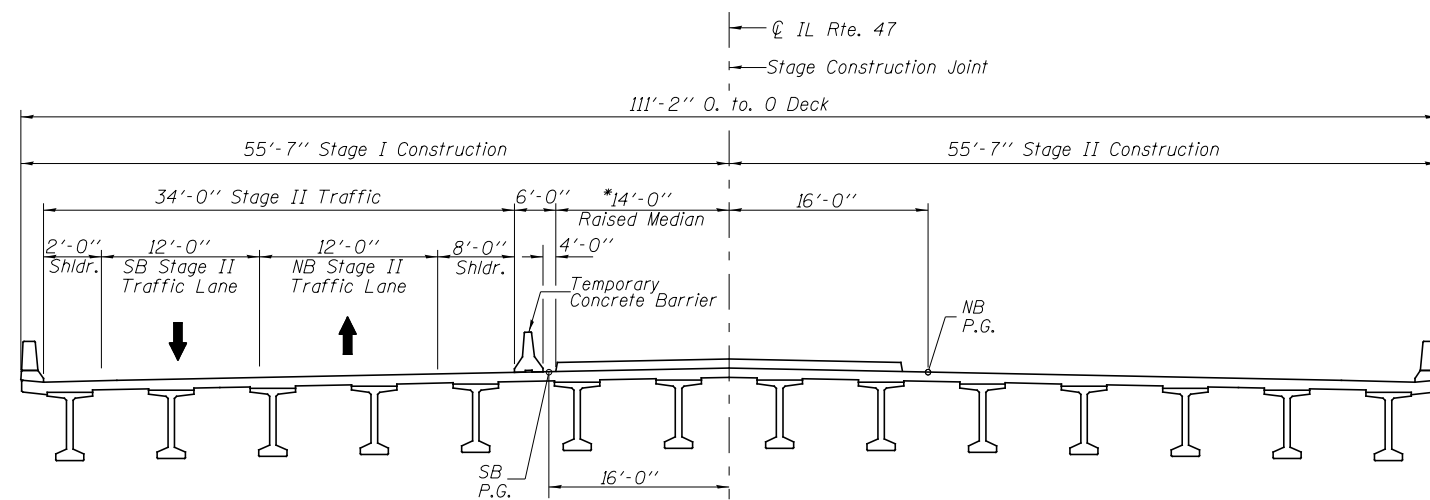


STAGE I CONSTRUCTION
 (Looking North)

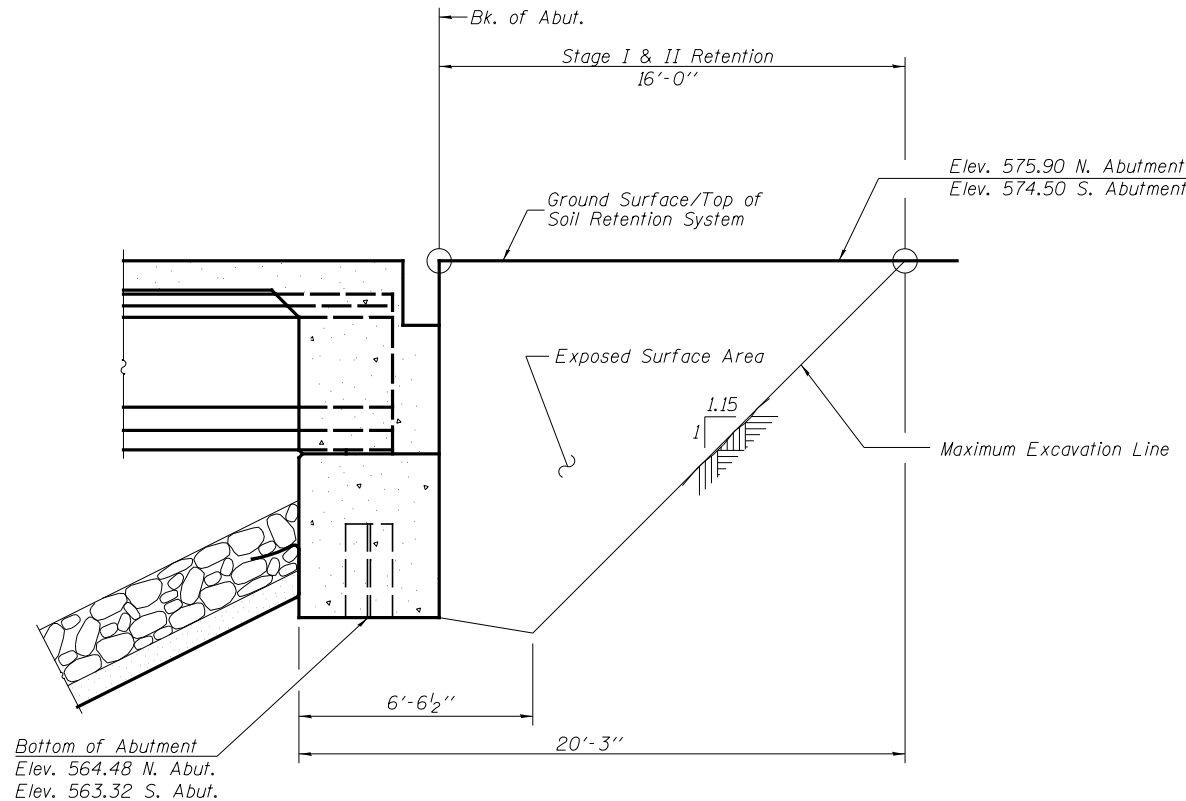


STAGE II REMOVAL
 (Looking North)

*The Raised Median shall be poured after Stage II Construction deck has met its required 14 day strength.



STAGE II CONSTRUCTION
 (Looking North)



TEMPORARY SOIL RETENTION SYSTEM

Horizontal dimension parallel to roadway.
 (North abutment shown, south abutment similar.)

A cantilevered sheet piling design does not appear feasible and additional members or other retention systems may be necessary. The Contractor shall submit a temporary soil retention system design including plan details and calculations for review and acceptance by the Engineer.

V:\3195\Structure\032-0122\0320122-668-83-003-STAGING SEQU.dgn	USER NAME = bdcraene	DESIGNED - STM	Hutchison Engineering, Inc. JACKSONVILLE-SHOREWOOD-PEORIA	STATE OF ILLINOIS DEPARTMENT OF TRANSPORTATION	STAGE CONSTRUCTION DETAILS STRUCTURE NO. 032-0122	F.A.P. RTE.	SECTION	COUNTY	TOTAL SHEETS	SHEET NO.
	PLOT SCALE = NONE	CHECKED - BAN				326	110BR	GRUNDY	644	329
	PLOT DATE = 8/6/2013	DRAWN - STM				CONTRACT NO. 66B83				
						ILLINOIS FED. AID PROJECT				