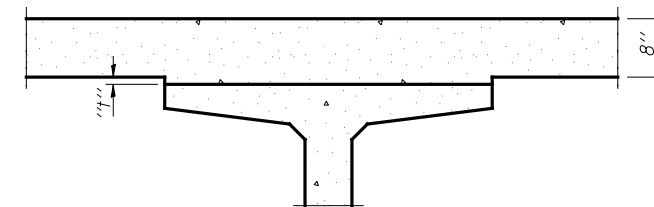


DEAD LOAD DEFLECTION DIAGRAM

(Includes weight of concrete, excluding beams).

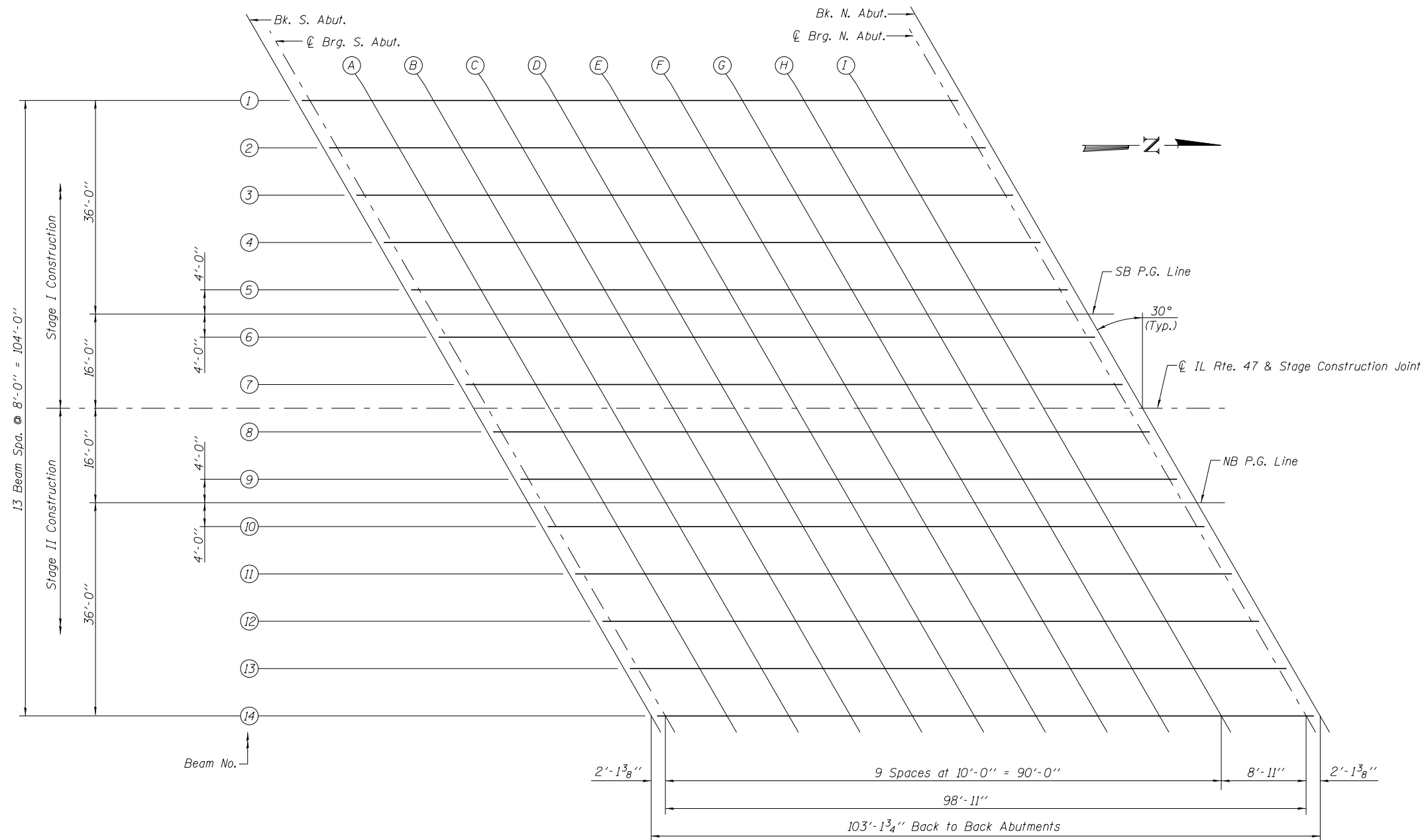
Note:

The above deflections are not to be used in the field if the engineer is working from the grade elevations adjusted for dead load deflections as shown on Sheets 6, 7, & 8 of 32.



To determine "t": After all precast prestressed beams have been erected, elevations of the top flanges of the beams shall be taken at intervals shown below. These elevations subtracted from the "Theoretical Grade Elevations Adjusted for Dead Load Deflections" shown on Sh. 6, 7 & 8 of 32, minus slab thickness, equals the fillet heights "t" above top flanges of beams.

FILLET HEIGHTS



PLAN

V:\3195\Structure\032-0122\0320122-668-83-005-TOP SLAB ELEV.dgn	USER NAME = bdecræne	DESIGNED - STM
	PLOT SCALE = NONE	CHECKED - BAN
	PLOT DATE = 8/6/2013	DRAWN - TAC/STM
		CHECKED - BAN

Hutchison Engineering, Inc.
JACKSONVILLE-SHOREWOOD-PEORIA

STATE OF ILLINOIS
DEPARTMENT OF TRANSPORTATION

TOP OF SLAB ELEVATIONS
STRUCTURE NO. 032-0122

SHEET NO. 5 OF 32 SHEETS

F.A.P. RTE.	SECTION	COUNTY	TOTAL SHEETS	SHEET NO.
326	110BR	GRUNDY	644	331
CONTRACT NO. 66B83				
ILLINOIS FED. AID PROJECT				