

Aluminum sheet joint in parapet typ. Each End

1x3-#8 e<sub>2</sub>(E) bar, Front Face  
1x3-#4 e<sub>1</sub>(E) bar, Back Face

**INSIDE ELEVATION OF PARAPET**

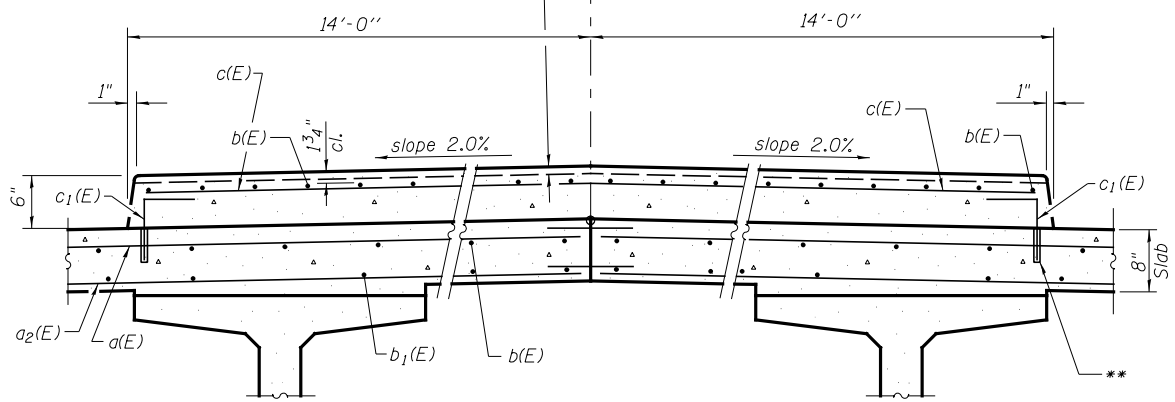
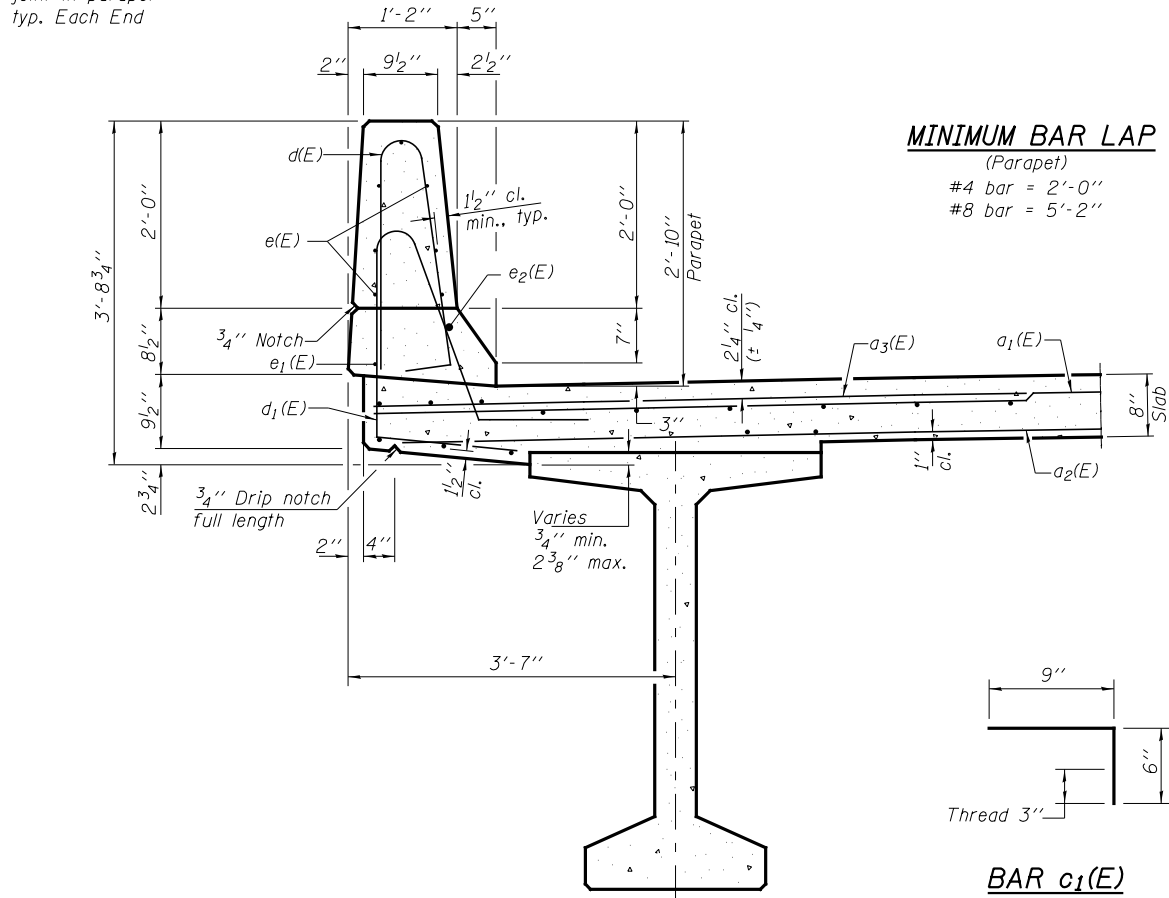
\* Full width along joint - backer rod not required. Cost included with Concrete Superstructure.  
\*\* 3/4" φ Galvanized expansion anchor or Ferrule Loop Slab Insert (Proof Load 6600 lb.). Cost is included in the cost of the Reinforcement Bars, Epoxy Coated.

**MINIMUM BAR LAP**

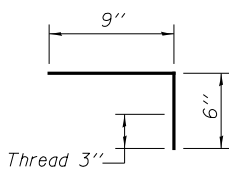
(Parapet)  
#4 bar = 2'-0"  
#8 bar = 5'-2"

\* 1/4" x 3/4" Formed joint with bridge relief joint sealer. (See Special Provisions)

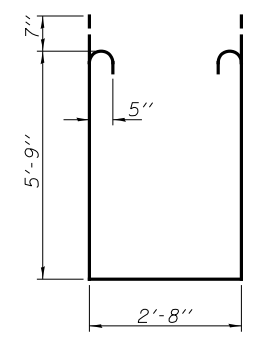
IL Rte. 47 & Stage Construction Joint



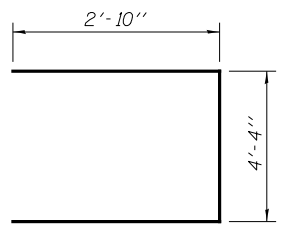
**SECTION THRU MEDIAN**



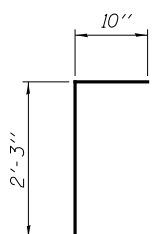
**BAR c<sub>1</sub>(E)**



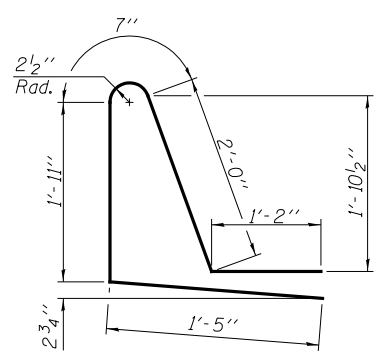
**BAR s<sub>1</sub>(E)**



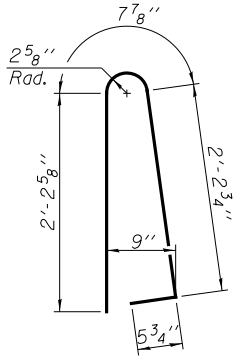
**BAR s(E)**



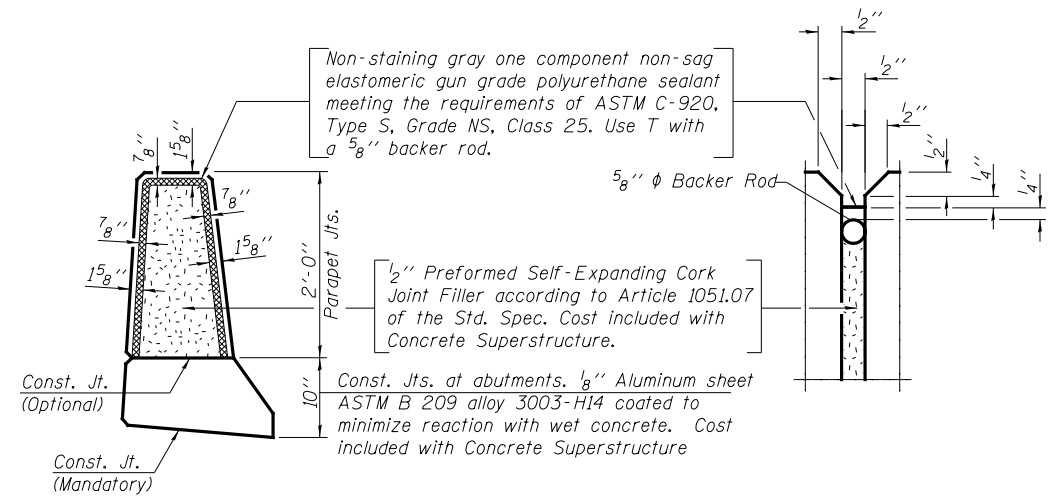
**BAR v(E)**



**BAR d<sub>1</sub>(E)**



**BAR d(E)**



**PARAPET JOINT DETAILS**

**SUPERSTRUCTURE BILL OF MATERIAL**

| Bar                              | No. | Size | Length  | Shape         |
|----------------------------------|-----|------|---------|---------------|
| a(E)                             | 402 | #5   | 33'-2"  | —             |
| a <sub>1</sub> (E)               | 402 | #5   | 24'-1"  | —             |
| a <sub>2</sub> (E)               | 536 | #5   | 28'-8"  | —             |
| a <sub>3</sub> (E)               | 402 | #6   | 6'-6"   | —             |
| a <sub>4</sub> (E)               | 16  | #5   | 33'-2"  | —             |
| b(E)                             | 435 | #5   | 35'-4"  | —             |
| b <sub>1</sub> (E)               | 440 | #5   | 27'-2"  | —             |
| c(E)                             | 101 | #5   | 27'-8"  | —             |
| c <sub>1</sub> (E)               | 202 | #5   | 1'-3"   | ⌊             |
| c <sub>2</sub> (E)               | 2   | #5   | 31'-11" | —             |
| d(E)                             | 222 | #5   | 5'-7"   | ⌋             |
| d <sub>1</sub> (E)               | 222 | #5   | 7'-1"   | ⌋             |
| e(E)                             | 84  | #4   | 16'-6"  | —             |
| e <sub>1</sub> (E)               | 6   | #4   | 34'-11" | —             |
| e <sub>2</sub> (E)               | 6   | #8   | 37'-1"  | —             |
| m(E)                             | 56  | #6   | 33'-8"  | —             |
| m <sub>1</sub> (E)               | 120 | #6   | 8'-4"   | —             |
| m <sub>2</sub> (E)               | 20  | #6   | 3'-5"   | —             |
| m <sub>3</sub> (E)               | 24  | #6   | 6'-5"   | —             |
| m <sub>4</sub> (E)               | 4   | #6   | 2'-6"   | —             |
| m <sub>5</sub> (E)               | 84  | #5   | 4'-0"   | —             |
| m <sub>6</sub> (E)               | 20  | #6   | 3'-11"  | —             |
| m <sub>7</sub> (E)               | 4   | #6   | 3'-1"   | —             |
| s(E)                             | 196 | #5   | 10'-0"  | ⌊             |
| s <sub>1</sub> (E)               | 144 | #5   | 15'-4"  | ⌊             |
| v(E)                             | 224 | #5   | 3'-1"   | ⌊             |
| Reinforcement Bars, Epoxy Coated |     |      |         | POUNDS 91,080 |
| Concrete Superstructure          |     |      |         | CU YD 553.0   |

Bars indicated thus 1 x 2-#5 etc. indicates 1 line of bars with 2 lengths per line.