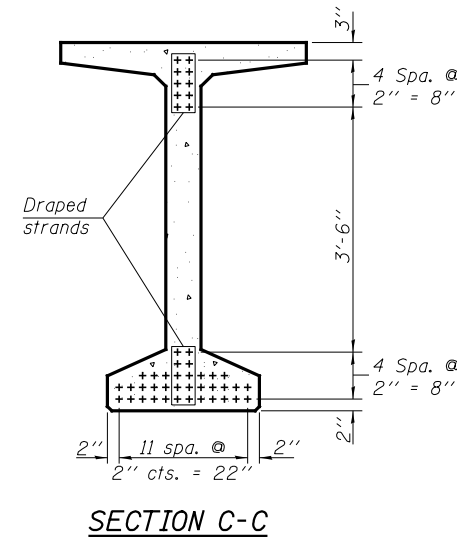
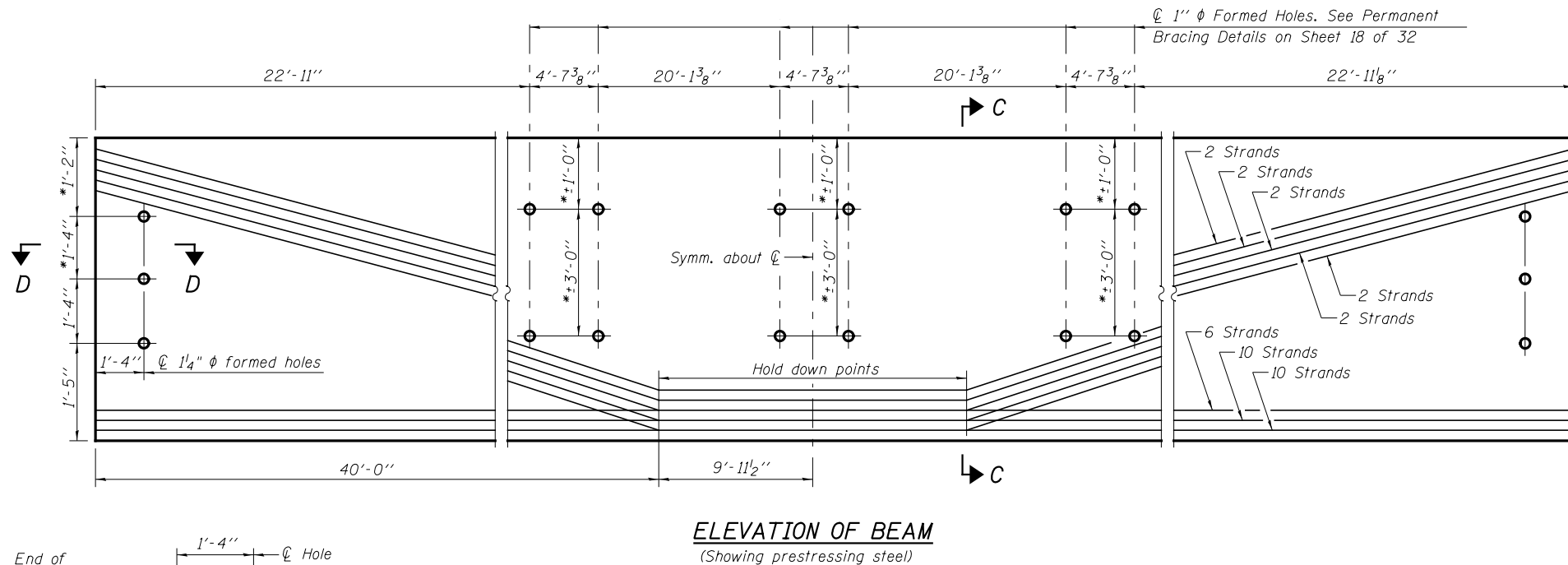
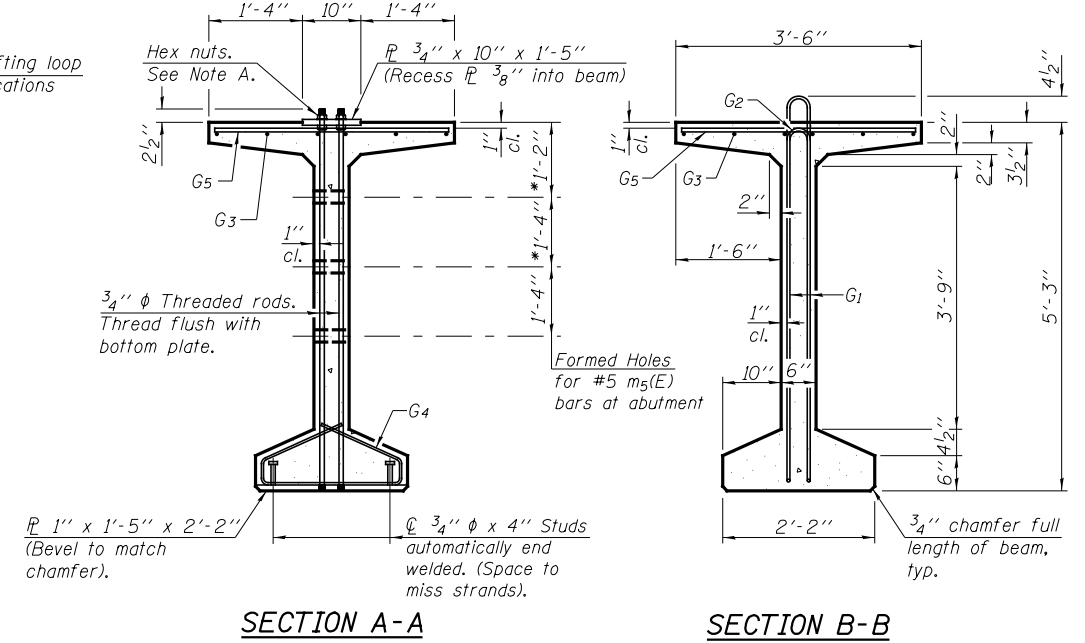


\* Adjust these dimensions to miss draped strands.  
 \*\* 4 spaces at 3 1/4" = 1'-1".  
 \*\*\* 5-3/4" φ threaded dowel rods at 3 1/4" cts., each face.

Note A:  
 Hex nuts (top and bottom) with lock washers (top). Only tighten sufficiently to compress lock washers.



**\*\*\*BAR LIST  
ONE BEAM ONLY**

| Bar            | No. | Size | Length  | Shape |
|----------------|-----|------|---------|-------|
| G <sub>1</sub> | 168 | #4   | 11'-11" | ∩L    |
| G <sub>2</sub> | 14  | #4   | 10'-2"  | ∩     |
| G <sub>3</sub> | 18  | #6   | 35'-0"  | —     |
| G <sub>4</sub> | 56  | #3   | 4'-11"  | ∩     |
| G <sub>5</sub> | 133 | #5   | 3'-4"   | —     |

\*\*\*\*For information only

Notes:  
 See Sheet 20 of 32 for additional details and Bill of Material.  
 Required release strength, f<sub>ci</sub>, shall be 6,000 psi.  
 Apply approved bond breaker as shown in Section Thru Top Flange full length of beam. See Special Provisions.

