



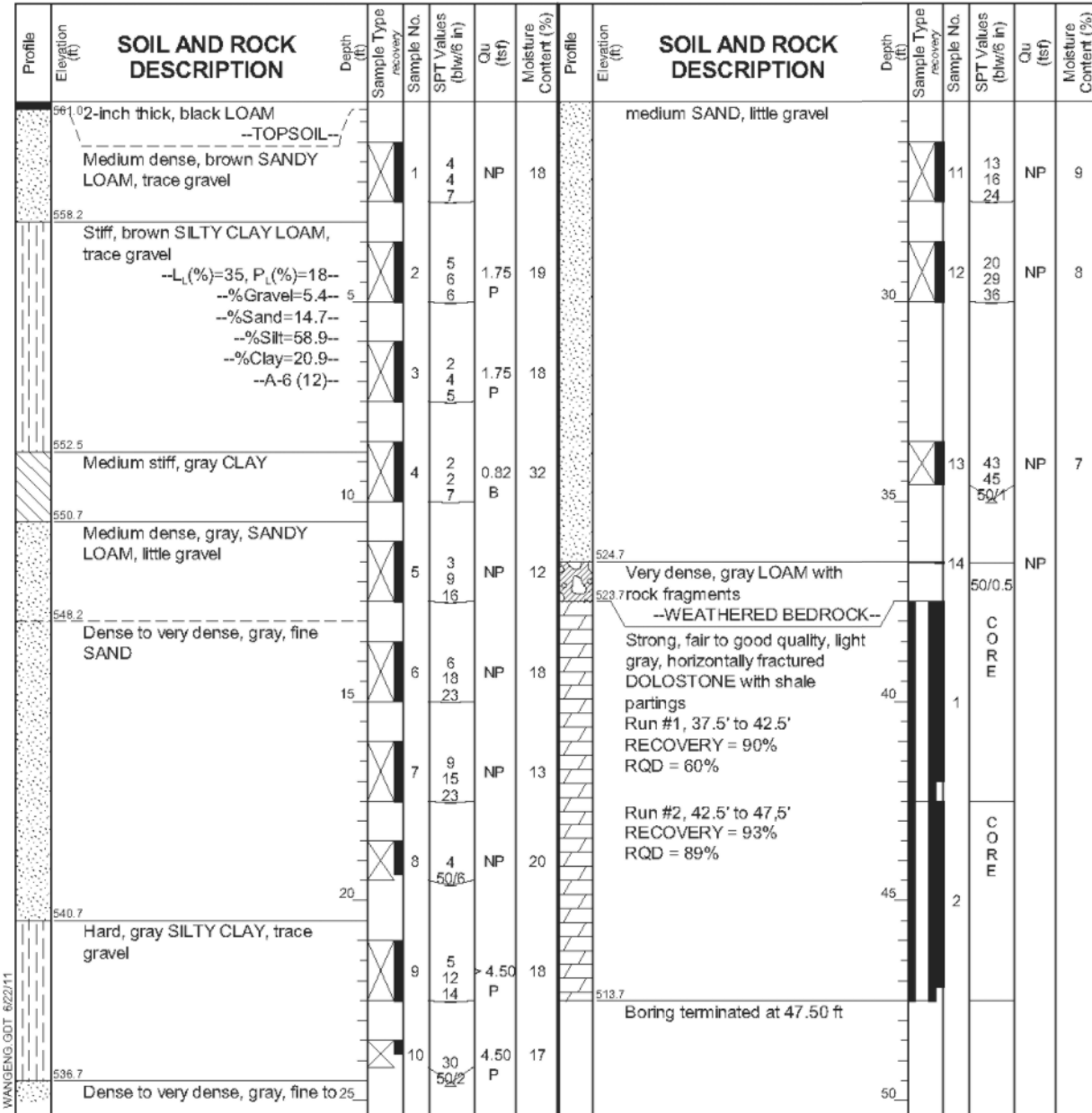
wangeng@wangeng.com
1145 N Main Street
Lombard, IL 60148
Telephone: 630 953-9928
Fax 630 953-9938

BORING LOG WC33-B01

WEI Job No.: 790-36-01

Client: TranSystems Corporation
Project: Prairie Parkway
Location: IL 47 Over Saratoga Creek, Grundy Co., IL

Datum: NGVD
Elevation: 561.20 ft
North: 1731699.97 ft
East: 959699.87 ft
Station: 6118+48.99
Offset: 71.98 RT



WANGENG\WC33-B01.GPJ WANGENG.GDT 6/22/11

GENERAL NOTES		WATER LEVEL DATA	
Begin Drilling	06-24-2009	Complete Drilling	06-24-2009
Drilling Contractor	WTS	Drill Rig	D 120 ATV
Driller	K&J	Logger	F. Bozga
		Checked by	C. Marin
Drilling Method	3.25 IDA HSA; Boring backfilled upon completion		
While Drilling	DRY		
At Completion of Drilling	WASHED		
Time After Drilling	NA		
Depth to Water	NA		
The stratification lines represent the approximate boundary between soil types; the actual transition may be gradual.			



ROCK CORE LOG

Date 06/24/2009

ROUTE IL 47 DESCRIPTION Structure Boring LOGGED BY Francisc Bozga

SECTION IL47A LOCATION IL 47 over Saratoga Creek SEC. 15 TWP. 34N RNG. 7E PM

COUNTY Grundy CORING METHOD Conventional 5' run

STRUCT. NO. 032-0122 CORING BARREL TYPE & SIZE NWD4 2,985x2.060

Station 6118+40.00 Core Diameter 2.1 in

BORING NO. WC33-B01 Top of Rock Elev. 523.7 ft

Station 6118+48.99 Begin Core Elev. 523.7 ft

Offset 71.98 RT

Ground Surface Elev. 561.20 ft

DESCRIPTION	DEPTH (ft)	CORE (#)	RECOVERY (%)	RQD (%)	RECOVERED CORE LENGTH (min/ft)	STRENGTH (tsf)
Strong, fair to good quality, light gray, horizontally fractured DOLOSTONE with shale partings	Run 1	37.5	1	90	60	
	Run 2	42.5	2	93	89	

Color pictures of the cores Yes
Cores will be stored for examination until
The "Strength" column represents the uniaxial compressive strength of the core sample (ASTM D-2938)

BBS 138 (Rev. 3/01)