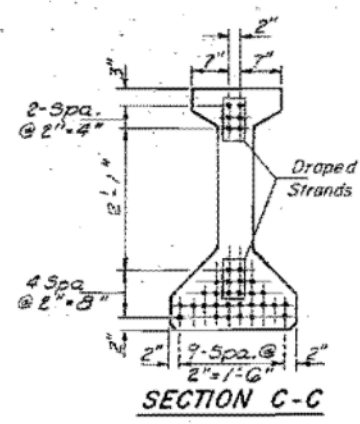
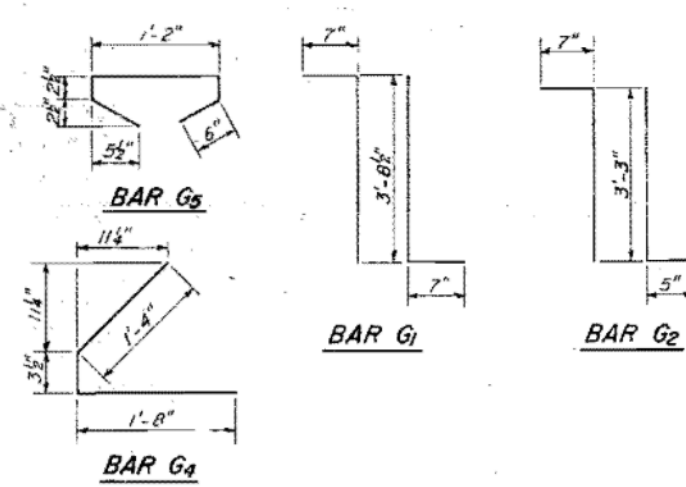
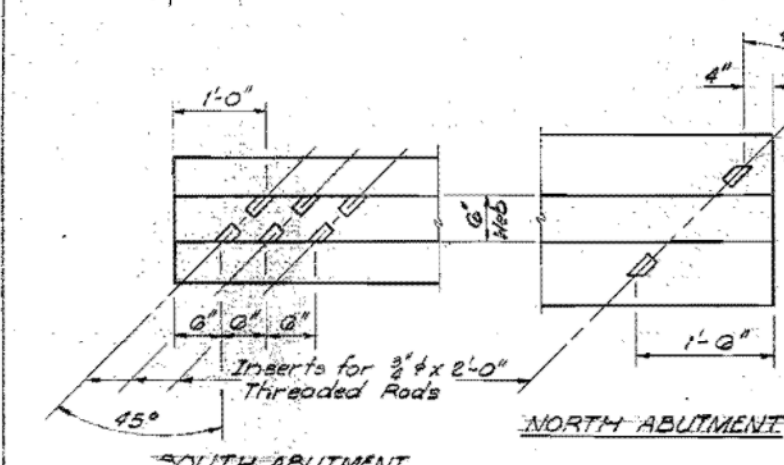
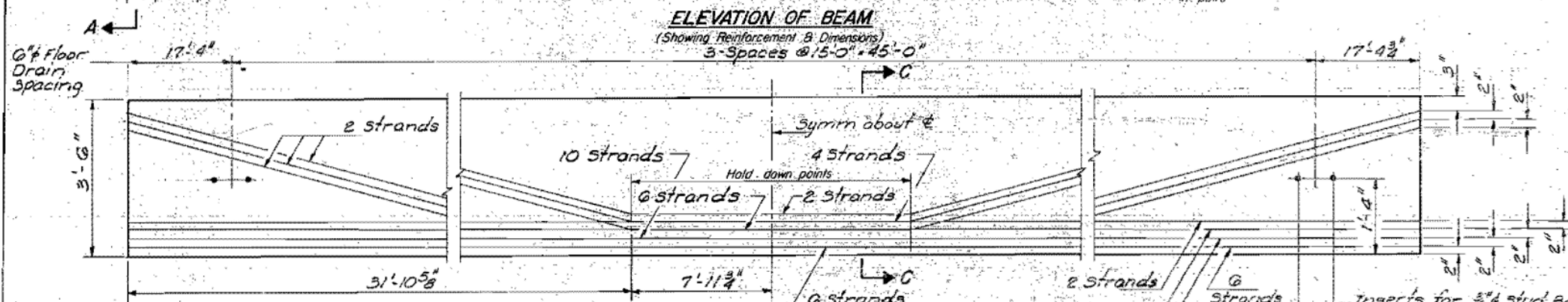
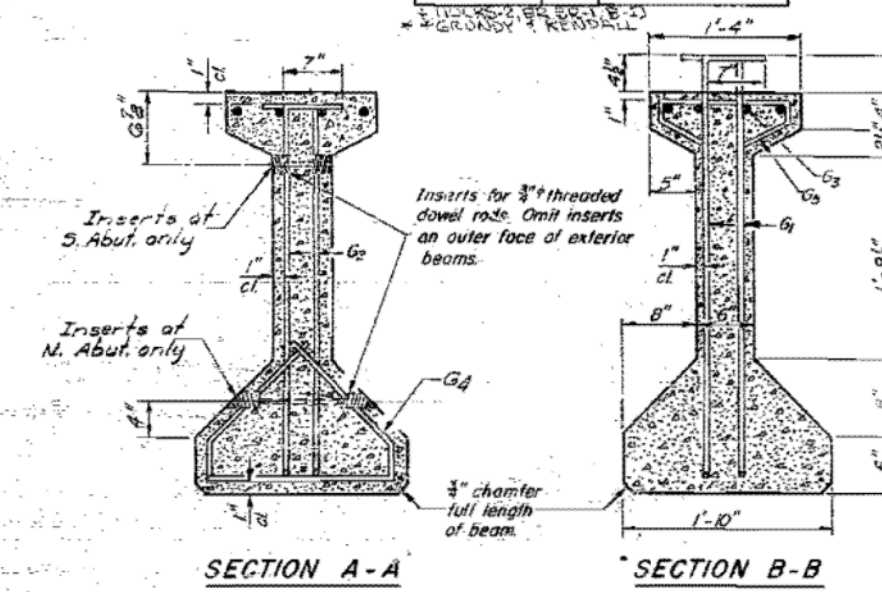
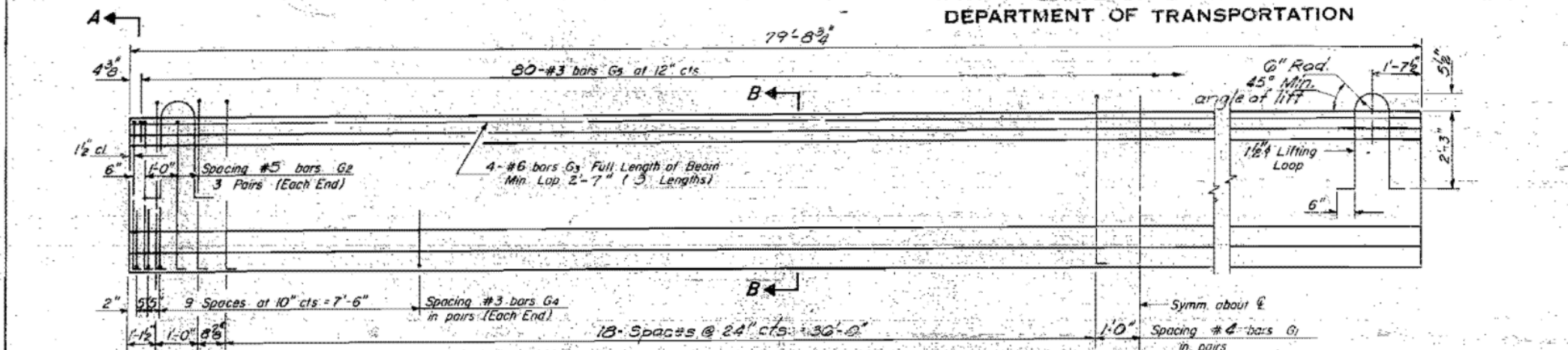


STATE OF ILLINOIS
DEPARTMENT OF TRANSPORTATION

ROUTE NO.	SECTION	COUNTY	SHEET NO.	SHEET NO.
100	*	*	106	77
SHEETS 15				



***BAR LIST**

Bar No.	Size	Length	Shape
G1	#4	4'-10 1/2"	7L
G2	#5	4'-3"	7L
G3	#6	2B-3"	—
G4	#3	3'-3 1/2"	∟
G5	#3	2'-7"	∩

* For one beam only.

BILL OF MATERIAL

Item	Unit	Total
Furnishing & Erecting Precast Prestressed Concrete I-Beams, 42"	Lin Ft.	558

NOTES

All inserts and threaded dowel rods or inserts, reinforcing and Prestressing Steel, and other items which are cast into the Precast Concrete I-Beams shall be included in the contract unit price per linear foot of "Furnishing and Erecting Precast Prestressed Concrete I-Beams, 42 in."
 Insert for 3/4" threaded dowel rods are to be two strut, coil type for interior I-Beams and single coil, flared loop type for exterior I-Beams.
 Prestressing steel shall be non-galvanized high strength, stress-relieved 7-wire strand, Grade 270.
 The nominal diameter shall be 1/2" and the nominal cross-sectional area shall be 0.153 sq. in.
 Non-prestressing steel shall conform to A.A.S.H.T.O. designation M-31, M-42 or M-53 Grade 60.
 Steel for lifting loops shall be non-deformed bars f'y = 40,000 psi
 Required release strength, f'ci, shall be 4,800 psi.

FOR INFORMATION ONLY

BEAM DETAILS
F.A. RT. 100 SEC. 110BR-1
GRUNDY COUNTY
STA. 203+54.75

DESIGNED: Y. DAMIAN ESPAILLON
 CHECKED: VICTOR VELEZ
 DRAWN: J. SCHNELLER
 CHECKED: P.M. Petrone

EXAMINED: [Signature]
 PASSED: [Signature]
 APPROVED: [Signature]

May 22 1987

FILE NAME: V:\3195\66883 (South Section)\CADD Sheets\0366883-sht-exstruct-21.dgn	DESIGNED -	REVISOR -
PLOT SCALE: 2.0000' / in.	DRAWN -	REVISIONS -
PLOT DATE: 8/6/2013	CHECKED -	DATE - 7/15/2013
	DATE -	REVISIONS -

STATE OF ILLINOIS
DEPARTMENT OF TRANSPORTATION

IL. RTE. 47
EXISTING BRIDGE PLANS

SCALE: N/A SHEET 21 OF 23 SHEETS STA. N/A TO STA. N/A

F.A.P. RTE.	SECTION	COUNTY	TOTAL SHEETS	SHEET NO.
326	(110)R, BR & BR-1	GRUNDY	644	419
CONTRACT NO. 66883				
ILLINOIS FED. AID PROJECT				