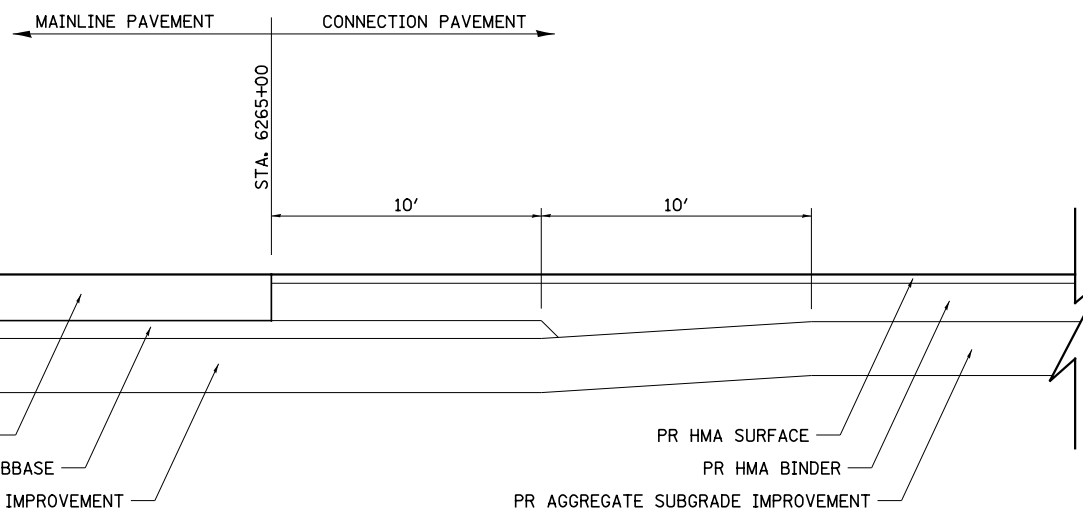


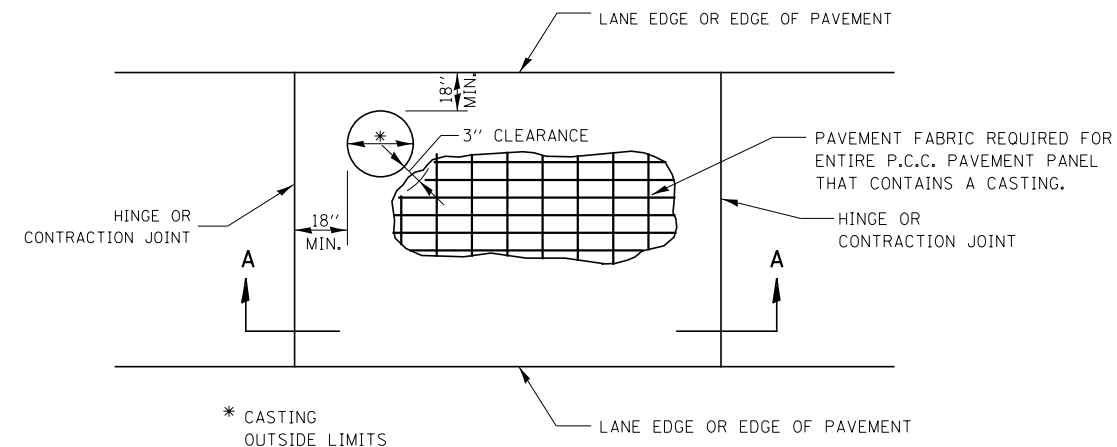
SOUTHBOUND PAVEMENT

NORTH TERMINUS



NORTHBOUND PAVEMENT

MAINLINE PAVEMENT TERMINATION DETAILS



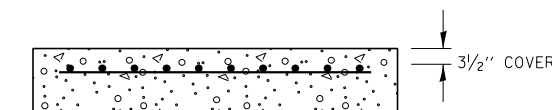
* CASTING
OUTSIDE LIMITS

GENERAL NOTES

THE CASTING SHALL BE SET TO GRADE, ANCHORED, AND INCORPORATED INTO THE P.C.C. PAVEMENT CONSTRUCTION. SEPARATE PAVEMENT BLOCKOUTS WILL NOT BE ALLOWED.

SEE STD. 420701 FOR ADDITIONAL PAVEMENT FABRIC DETAILS.

PAVEMENT FABRIC WILL BE PAID FOR SEPARATELY. THE QUANTITY OF PAVEMENT FABRIC WILL BE THE COMPUTED SURFACE AREA OF THE P.C.C. PAVEMENT PANEL IN WHICH THE PAVEMENT FABRIC IS INSTALLED. NO DEDUCTION WILL BE MADE FOR THE CASTING AREA.



SECTION A-A

DESIGNER NOTES

INCLUDE STD. 420701
NEED PAY ITEM FOR PAVEMENT FABRIC

CASTINGS IN P.C.C. PAVEMENT

FILE NAME = V:\3195\66883 (South Section)\CADD Sheets\0366883-shd-details-12.dgn	USER NAME = bdecreene	DESIGNED - LDZ	REVISED -
PLOT SCALE = 2.0000' / in.	CHECKED - DJD	DRAWN - SGM	REVISED -
PLOT DATE = 8/6/2013	DATE - 7/15/2013		REVISED -

**STATE OF ILLINOIS
DEPARTMENT OF TRANSPORTATION**

IL. RTE. 47 DETAILS		F.A.P. RTE.	SECTION	COUNTY	TOTAL SHEETS	SHEET NO.
SCALE: N/A	SHEET NO. 12 OF 31 SHEETS	326	(110)R, BR & BR-1	GRUNDY	644	462
STA. N/A	TO STA. N/A	CONTRACT NO. 66883				
FED. ROAD DIST. NO. ILLINOIS FED. AID PROJECT						