

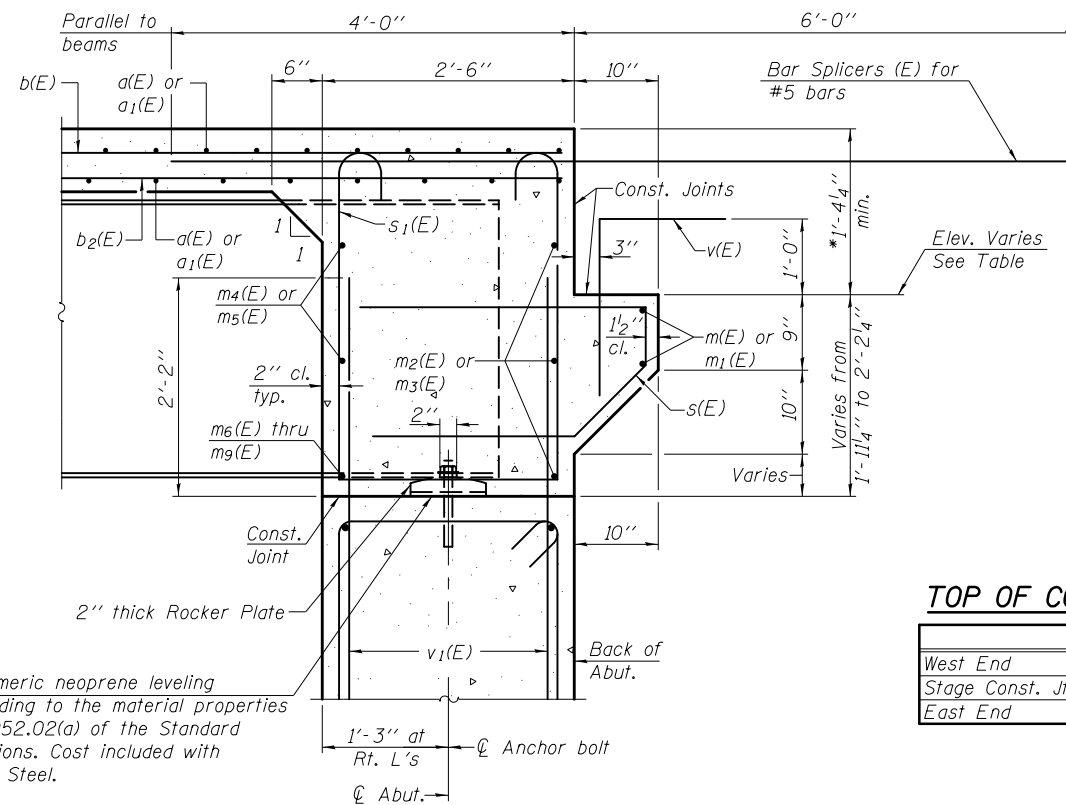
$\frac{1}{8}$ " elastomeric neoprene leveling pad according to the material properties of Article 1052.02(a) of the Standard Specifications

**DIAPHRAGM ELEVATION AT ABUTMENT**  
(Looking South)

**Notes:**

Reinforcement bars in diaphragm are billed with superstructure on sheet 12 of 28.  
Concrete in diaphragm is included with Concrete Superstructure on sheet 12 of 28.  
For details of v(E) bars, see sheet 12 of 28.  
The s(E) and s1(E) bars shall be placed parallel to the beams. Spacing for these bars shall be at right angles to the beams.

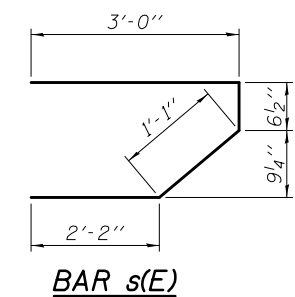
**MIN. BAR LAP**  
#6 bar = 3'-4"



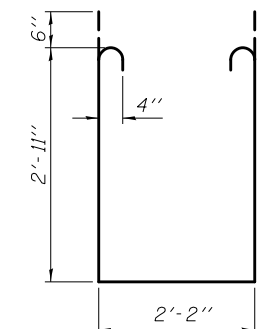
$\frac{1}{8}$ " elastomeric neoprene leveling pad according to the material properties of Art. 1052.02(a) of the Standard Specifications. Cost included with Structural Steel.

**SECTION A-A**

Dimensions at right angles to abutment, except as shown.



**BAR s(E)**



**BAR s1(E)**

\* Prior to Diamond Grinding of Bridge Section

**TOP OF CORBEL ELEVATIONS**

	N. Abut.	S. Abut.
West End	807.93	806.56
Stage Const. Jt.	808.50	807.15
East End	809.70	808.37