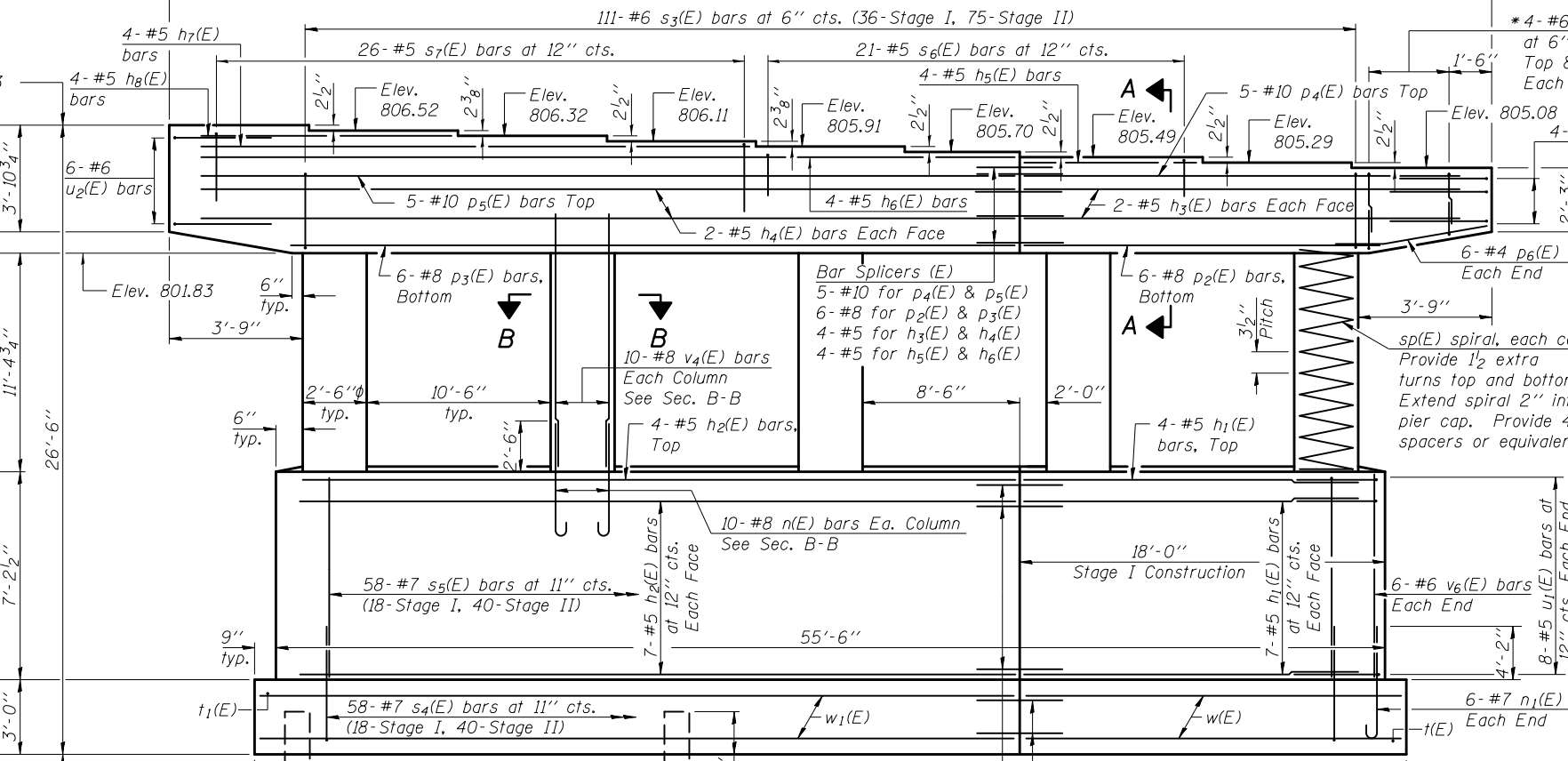
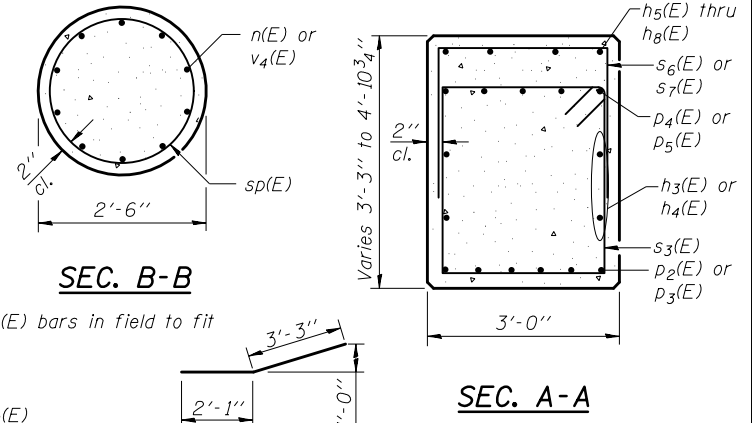
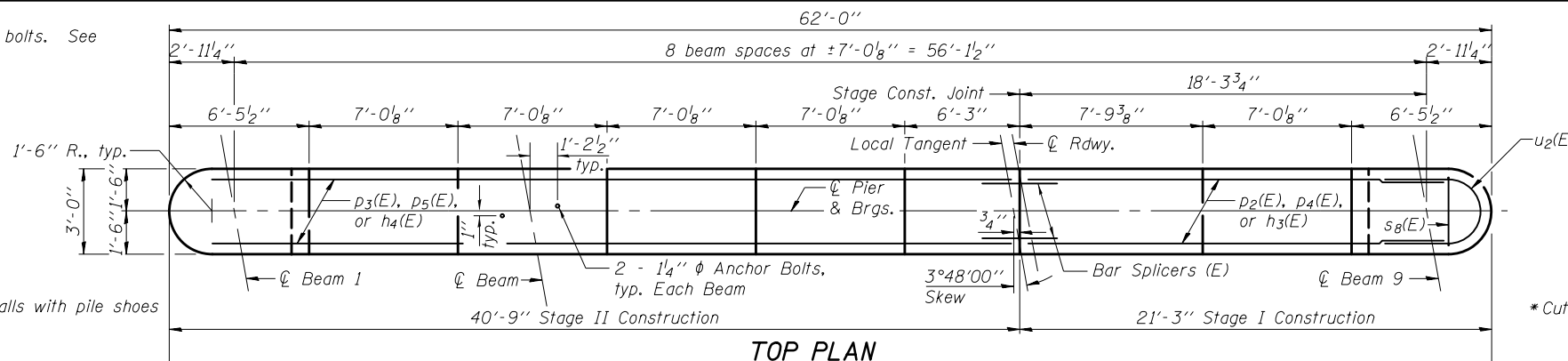


Notes:
 Space reinforcement in cap to miss anchor bolts. See sheet 19 of 28 for details of anchor bolts.
 Four steps monolithically with cap.
 For details of piles, see sheet 24 of 28.

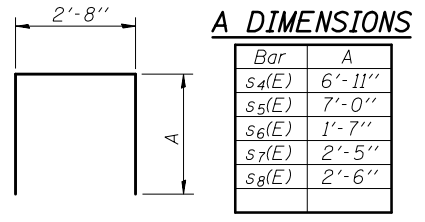
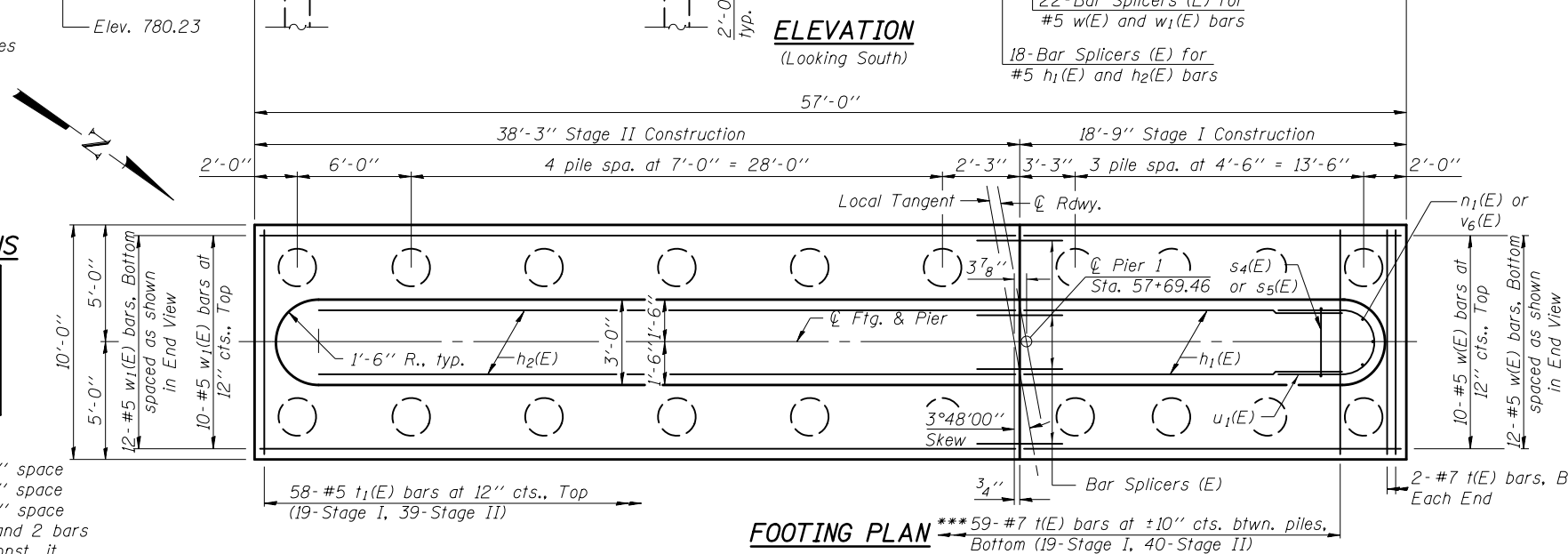
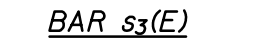
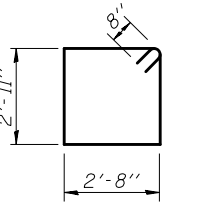
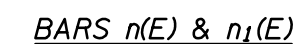
PILE DATA

Type: Metal Shell - 14 in. dia. x 0.250 in. walls with pile shoes
 Nominal Required Bearing: 255 kips
 Factored Resistance Available: 140 kips
 Est. Length: 22 ft.
 No. Production Piles: 19
 No. Test Piles: 1



BILL OF MATERIAL

Bar	No.	Size	Length	Shape
h1(E)	18	#5	16'-4"	—
h2(E)	18	#5	35'-10"	—
h3(E)	4	#5	19'-7"	—
h4(E)	4	#5	39'-1"	—
h5(E)	4	#5	7'-5"	—
h6(E)	4	#5	39'-1"	—
h7(E)	4	#5	25'-10"	—
h8(E)	4	#5	11'-10"	—
n(E)	50	#8	4'-11"	U
n1(E)	12	#7	7'-7"	U
p2(E)	6	#8	17'-10"	—
p3(E)	6	#8	37'-4"	—
p4(E)	5	#10	19'-7"	—
p5(E)	5	#10	39'-1"	—
p6(E)	12	#4	5'-4"	—
s3(E)	111	#6	12'-6"	□
s4(E)	58	#7	16'-6"	□
s5(E)	58	#7	16'-8"	□
s6(E)	21	#5	5'-10"	□
s7(E)	26	#5	7'-6"	□
s8(E)	16	#6	7'-8"	□
sp(E)	5	#4	11'-7"	W
t(E)	63	#7	9'-8"	—
t1(E)	58	#5	9'-8"	—
u1(E)	16	#5	9'-0"	U
u2(E)	10	#6	10'-8"	U
v4(E)	50	#8	14'-0"	—
v6(E)	12	#6	7'-0"	—
w(E)	22	#5	18'-5"	—
w1(E)	22	#5	37'-11"	—
Structure Excavation		Cu. Yd.	245	
Concrete Structures		Cu. Yd.	144.2	
Reinforcement Bars, Epoxy Coated		Pound	17540	
Furnishing Metal Shell Piles 14" x 0.250"		Foot	418	
Driving Piles		Foot	418	
Test Pile Metal Shells		Each	1	
Pile Shoes		Each	20	
Concrete Sealer		Sq. Ft.	2017	



*** 6 bars per 6'-0" space
 8 bars per 7'-0" space
 5 bars per 4'-6" space
 4 bars to west and 2 bars to east of stage const. jt.