

**EAST EDGE OF SHOULDER**

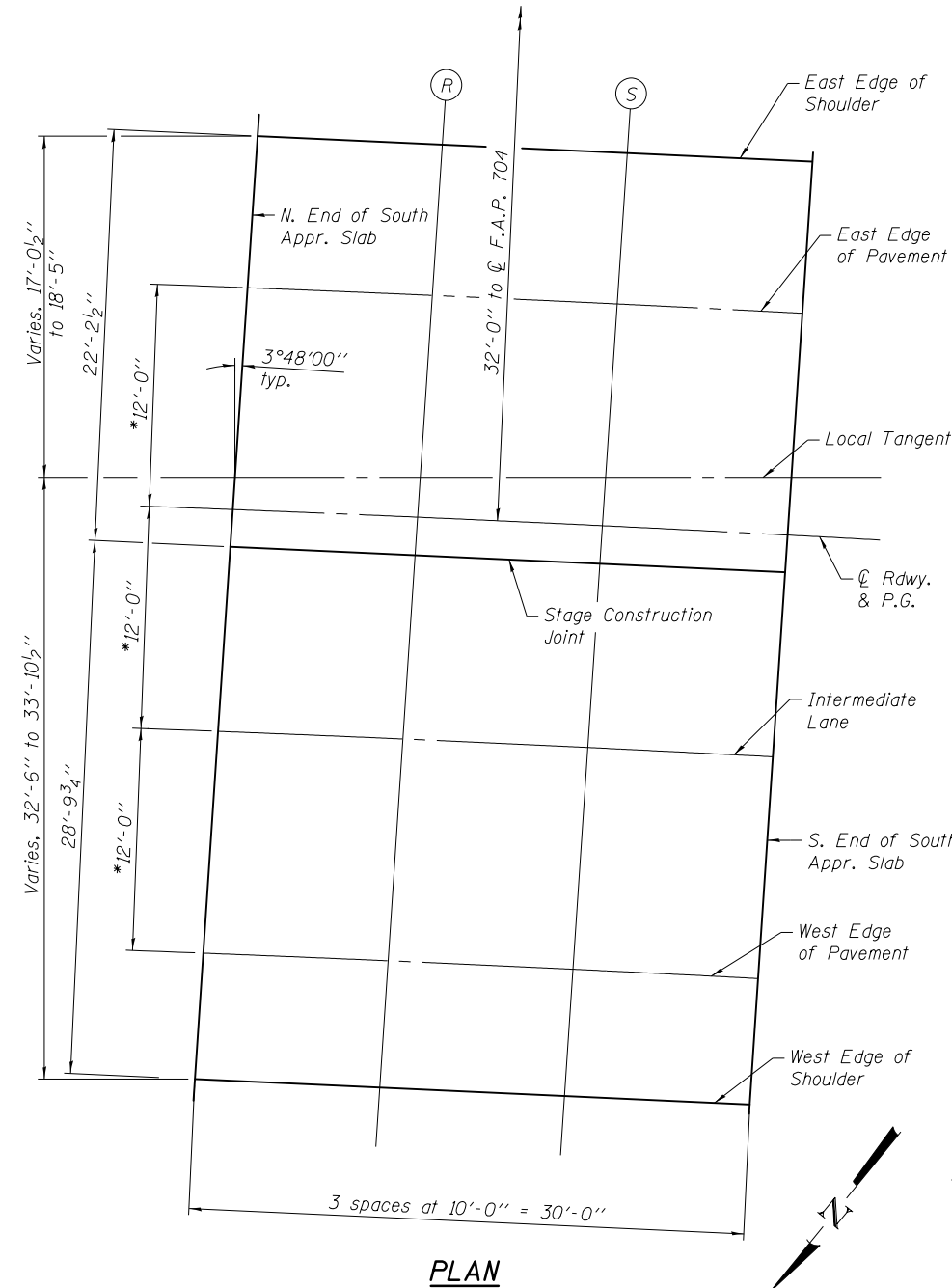
Location	Station	**Offset	Theoretical Grade Elevations	Theoretical Grade Elevations Adjusted For Grinding
N. End South Appr.	58+98.41	11.80	809.35	809.37
R	59+08.46	11.85	809.27	809.29
S	59+18.51	11.84	809.19	809.21
S. End South Appr.	59+28.56	11.80	809.11	809.13

**EAST EDGE OF PAVEMENT**

Location	Station	**Offset	Theoretical Grade Elevations	Theoretical Grade Elevations Adjusted For Grinding
N. End South Appr.	58+98.19	20.00	808.98	809.00
R	59+08.27	20.00	808.91	808.93
S	59+18.36	20.00	808.82	808.85
S. End South Appr.	59+28.45	20.00	808.74	808.76

**☉ ROADWAY & PROFILE GRADE**

Location	Station	**Offset	Theoretical Grade Elevations	Theoretical Grade Elevations Adjusted For Grinding
N. End South Appr.	58+97.86	32.00	808.44	808.47
R	59+08.00	32.00	808.37	808.39
S	59+18.14	32.00	808.29	808.31
S. End South Appr.	59+28.28	32.00	808.20	808.22



**STAGE CONSTRUCTION JOINT**

Location	Station	**Offset	Theoretical Grade Elevations	Theoretical Grade Elevations Adjusted For Grinding
N. End South Appr.	58+97.80	34.01	808.35	808.38
R	59+07.95	34.05	808.28	808.30
S	59+18.10	34.06	808.19	808.21
S. End South Appr.	59+28.25	34.01	808.11	808.13

**INTERMEDIATE LANE**

Location	Station	**Offset	Theoretical Grade Elevations	Theoretical Grade Elevations Adjusted For Grinding
N. End South Appr.	58+97.53	44.00	807.91	807.93
R	59+07.72	44.00	807.83	807.85
S	59+17.92	44.00	807.75	807.77
S. End South Appr.	59+28.11	44.00	807.66	807.68

**WEST EDGE OF PAVEMENT**

Location	Station	**Offset	Theoretical Grade Elevations	Theoretical Grade Elevations Adjusted For Grinding
N. End South Appr.	58+97.19	56.00	807.37	807.39
R	59+07.44	56.00	807.29	807.31
S	59+17.69	56.00	807.21	807.23
S. End South Appr.	59+27.94	56.00	807.12	807.14

**WEST EDGE OF SHOULDER**

Location	Station	**Offset	Theoretical Grade Elevations	Theoretical Grade Elevations Adjusted For Grinding
N. End South Appr.	58+97.00	62.81	807.06	807.09
R	59+07.28	62.86	806.98	807.01
S	59+17.56	62.86	806.90	806.92
S. End South Appr.	59+27.85	62.82	806.82	806.84

\* Radial dimensions from ☉ Rdwy.  
 \*\* From ☉ F.A.P. 704