

**Notes:**

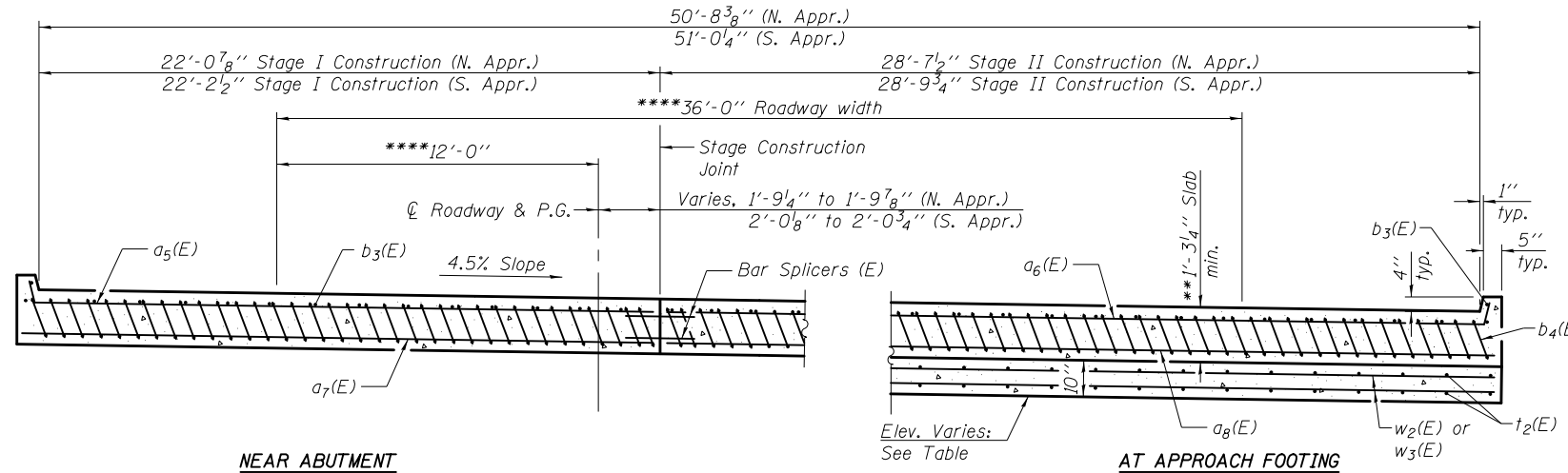
Approach slab concrete shall be paid for as Concrete Superstructure.  
 Approach footing concrete shall be paid for as Concrete Structures.  
 Reinforcement shall be paid for as Reinforcement Bars, Epoxy Coated.  
 For v(E) bar details, see sheets 11 and 12 of 26.  
 The approach footing maximum applied service bearing pressure (Qmax) = 2.0 ksf.  
 For bar splicer details, see sheet 23 of 26.  
 Cost of excavation for approach footing included with Concrete Structures.  
 For Granular Backfill for Structures and drainage treatment details, see sheet 2 of 26.  
 Dimensions are shown parallel and perpendicular to the Stage Construction Joint, unless noted otherwise.

**TWO APPROACHES  
BILL OF MATERIAL**

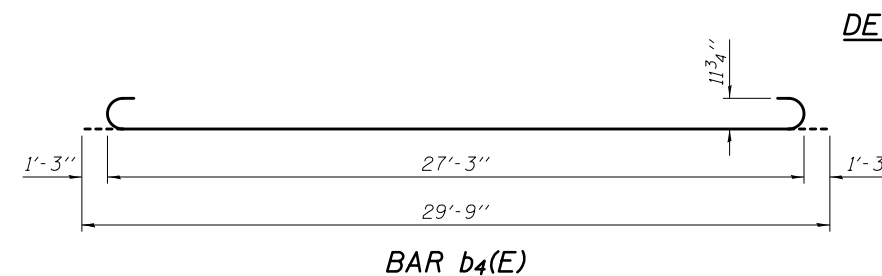
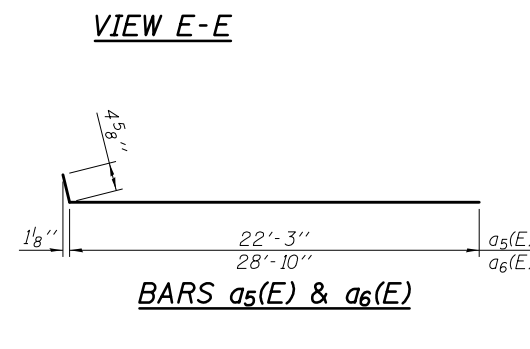
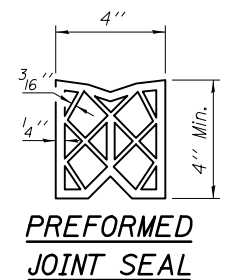
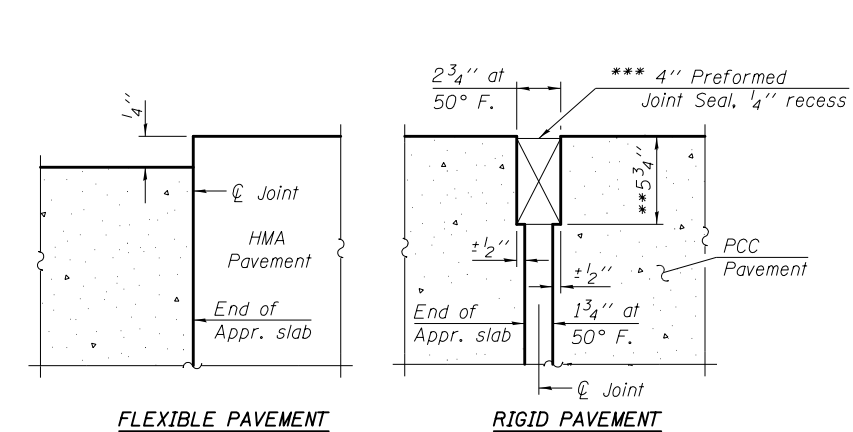
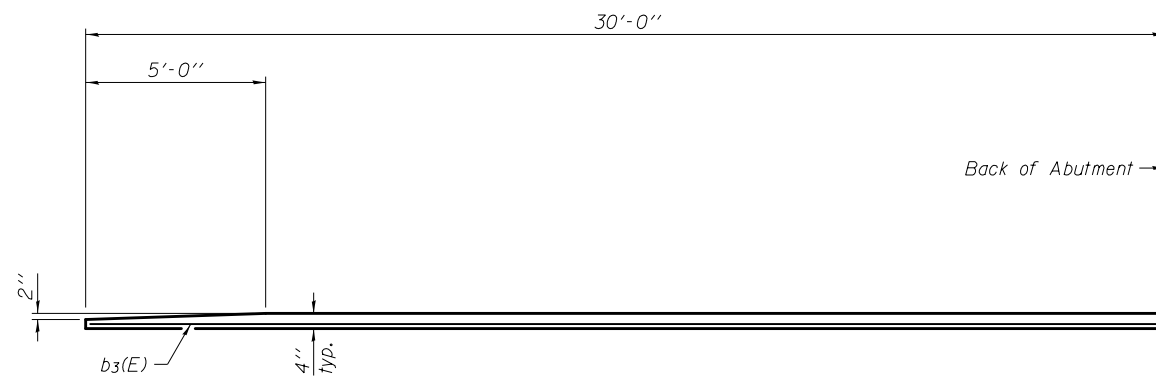
Bar	No.	Size	Length	Shape
a5(E)	50	#4	22'-8"	U
a6(E)	50	#4	29'-3"	U
a7(E)	92	#5	22'-4"	U
a8(E)	92	#5	28'-11"	U
b3(E)	88	#4	29'-8"	U
b4(E)	249	#9	29'-9"	U
t2(E)	212	#4	9'-8"	U
w2(E)	80	#5	22'-4"	U
w3(E)	80	#5	28'-11"	U
Concrete Superstructure			Cu. Yd.	148.2
Concrete Structures			Cu. Yd.	32.1
Reinforcement Bars, Epoxy Coated			Pound	39230

**APPROACH FOOTING ELEVATIONS**

	N. Appr.	S. Appr.
West Edge	806.56	804.71
Stage Const. Jt.	807.84	806.03
East Edge	808.83	807.05



- \* Tilt #9 b4(E) bars as required to maintain clearance.
- \*\* Prior to Diamond Grinding of the Bridge Section.
- \*\*\* Cost included with Concrete Superstructure.
- \*\*\*\* Measured radially.



(Sheet 3 of 3)