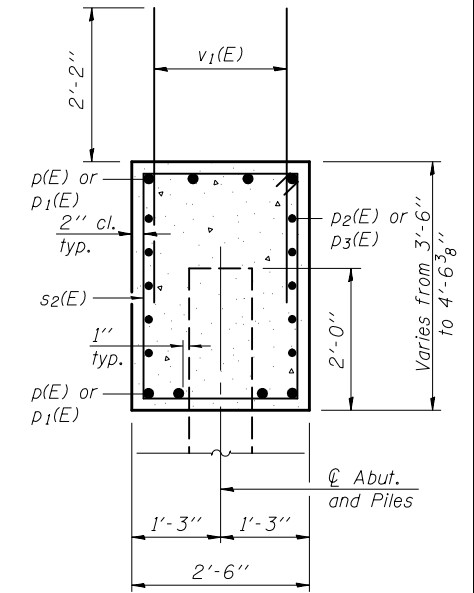
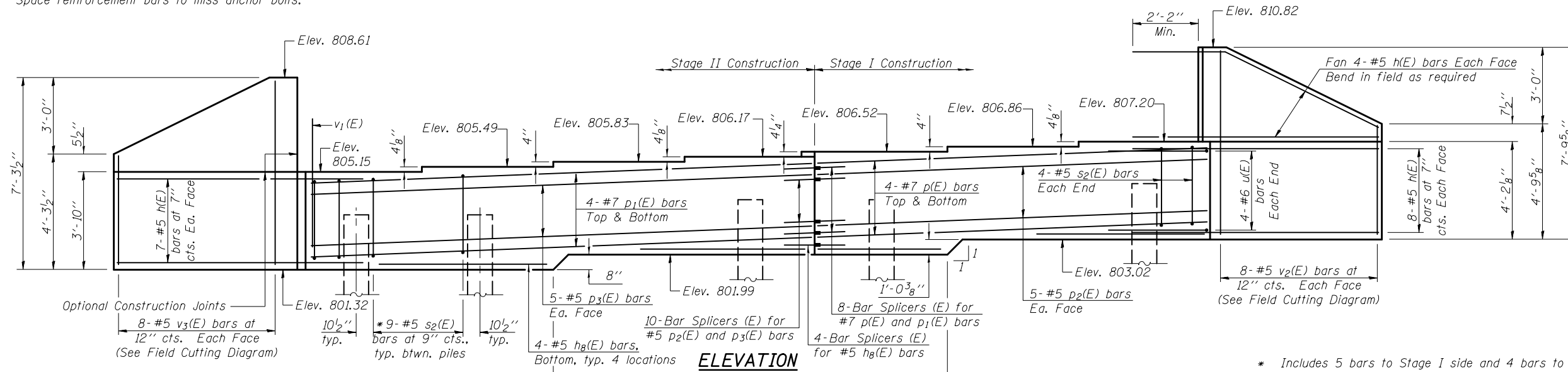


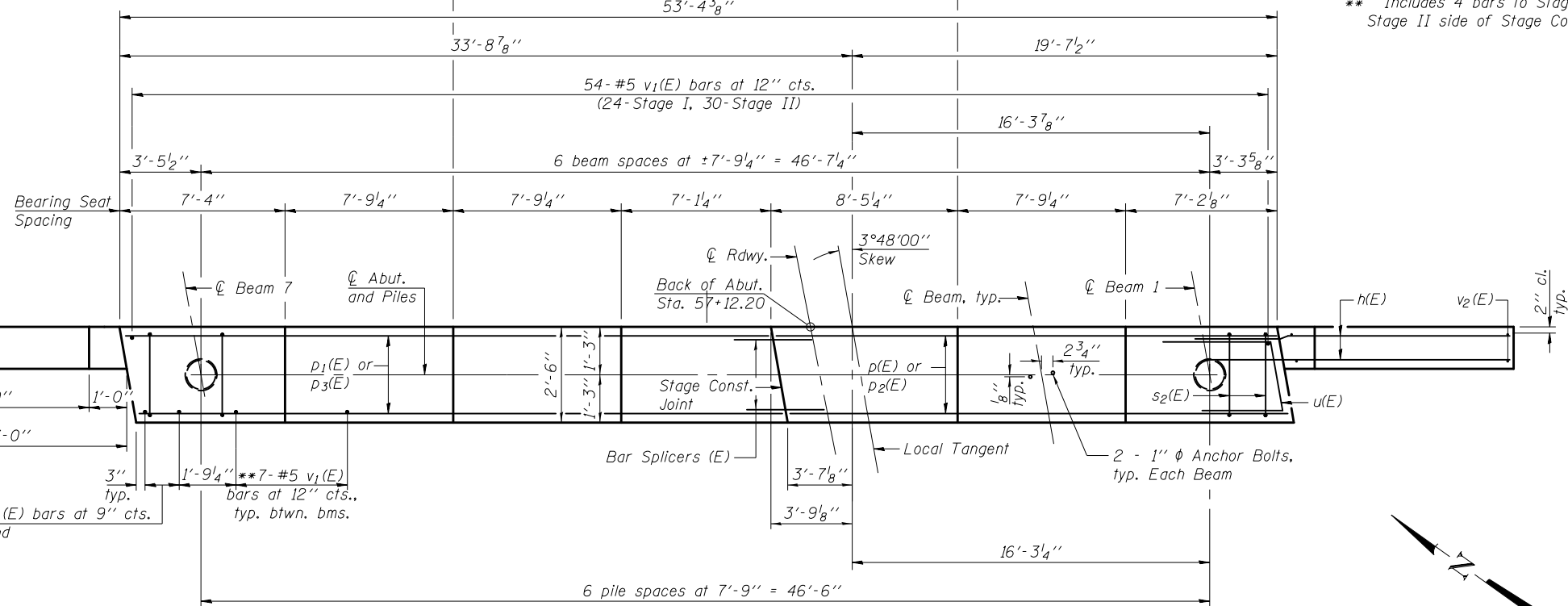
Notes:
 Pour steps monolithically with cap.
 Space reinforcement bars to miss anchor bolts.



* Includes 5 bars to Stage I side and 4 bars to Stage II side of Stage Const. Jt. at same spacing.
 ** Includes 4 bars to Stage I side and 3 bars to Stage II side of Stage Const. Jt. at same spacing.

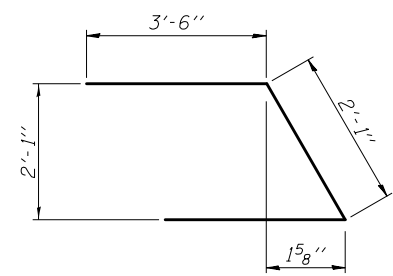
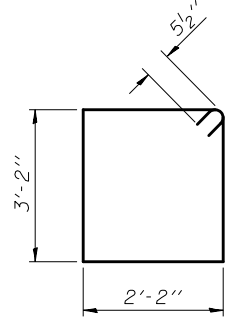
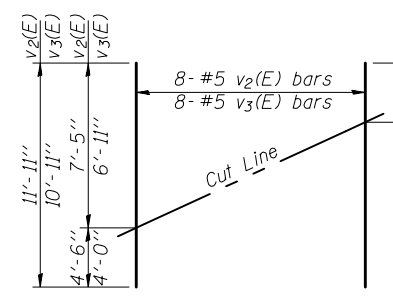
BILL OF MATERIAL

Bar	No.	Size	Length	Shape
$h(E)$	46	#5	9'-9"	—
$h_8(E)$	16	#5	8'-1"	—
$p(E)$	8	#7	23'-0"	—
$p_1(E)$	8	#7	29'-7"	—
$p_2(E)$	10	#5	23'-0"	—
$p_3(E)$	10	#5	29'-7"	—
$s_2(E)$	62	#5	11'-7"	□
$u(E)$	8	#6	9'-1"	▽
$v_1(E)$	104	#5	4'-4"	—
$v_2(E)$	8	#5	11'-11"	—
$v_3(E)$	8	#5	10'-11"	—
Structure Excavation			Cu. Yd.	123
Concrete Structures			Cu. Yd.	22.9
Reinforcement Bars, Epoxy Coated			Pound	3530
Furnishing Metal Shell Piles 14" x 0.312"			Foot	270
Driving Piles			Foot	270
Test Pile Metal Shells			Each	1
Pile Shoes			Each	7



PILE DATA

Type: Metal Shell - 14 in. dia. x 0.312 in. walls with pile shoes
 Nominal Required Bearing: 355 kips
 Factored Resistance Available: 195 kips
 Est. Length: 45 ft. (all piles)
 No. Production Piles: 6
 No. Test Piles: 1



For details of Bar Splicers, see sheet 23 of 26.
 For details of piles, see sheet 22 of 26.