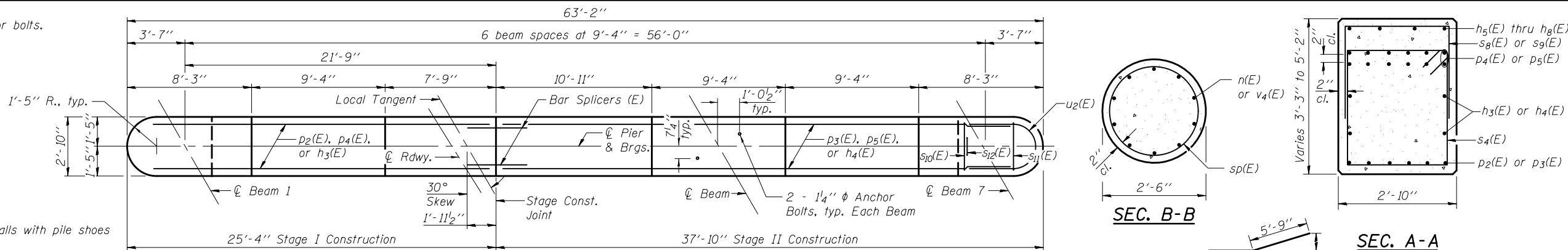


Notes:
 Space reinforcement in cap to miss anchor bolts.
 Pour steps monolithically with cap.
 For details of piles, see sheet 23 of 28.

PILE DATA

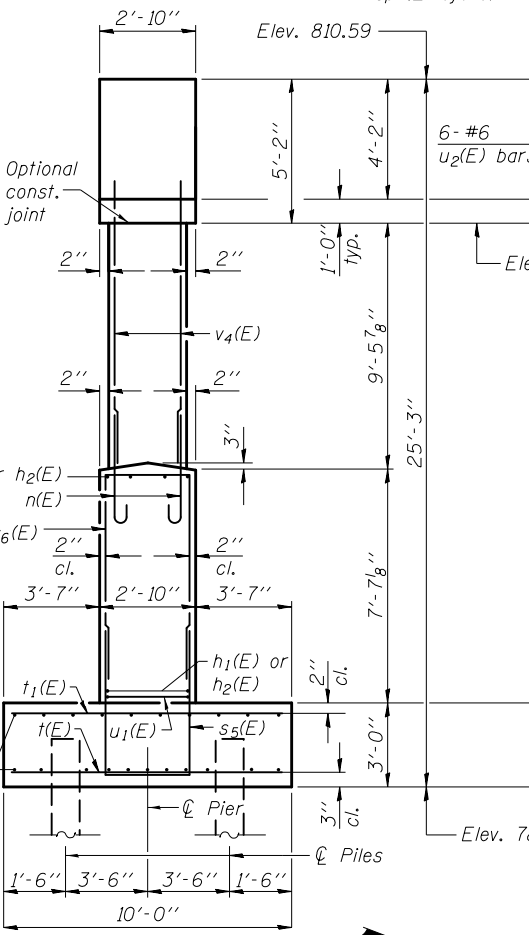
Type: Metal Shell - 14 in. dia. x 0.312 in. walls with pile shoes
 Nominal Required Bearing: 276 kips
 Factored Resistance Available: 152 kips
 Est. Length: 31 ft
 No. Production Piles: 17
 No. Test Piles: 1



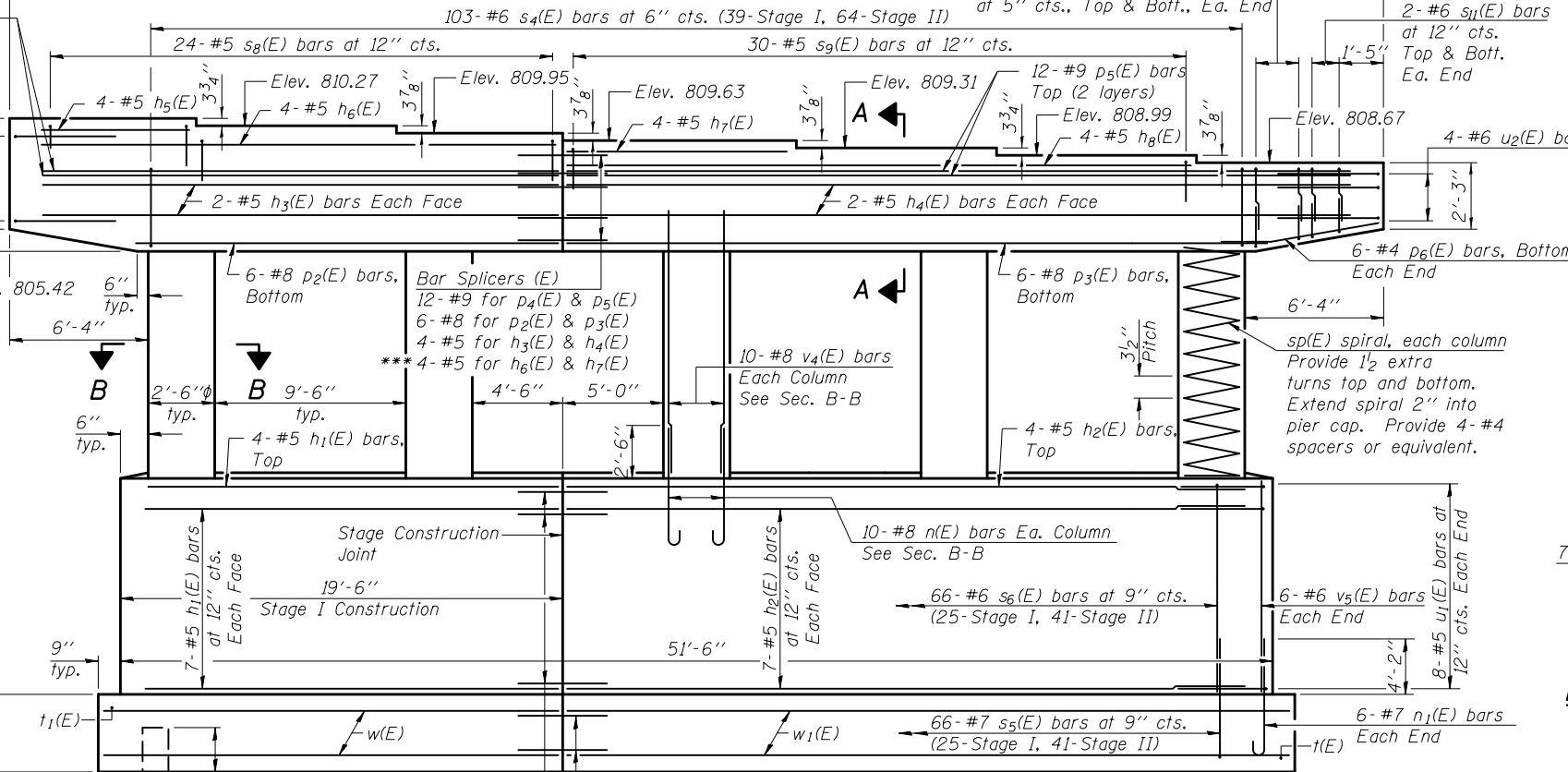
TOP PLAN

SEC. B-B

SEC. A-A



END VIEW



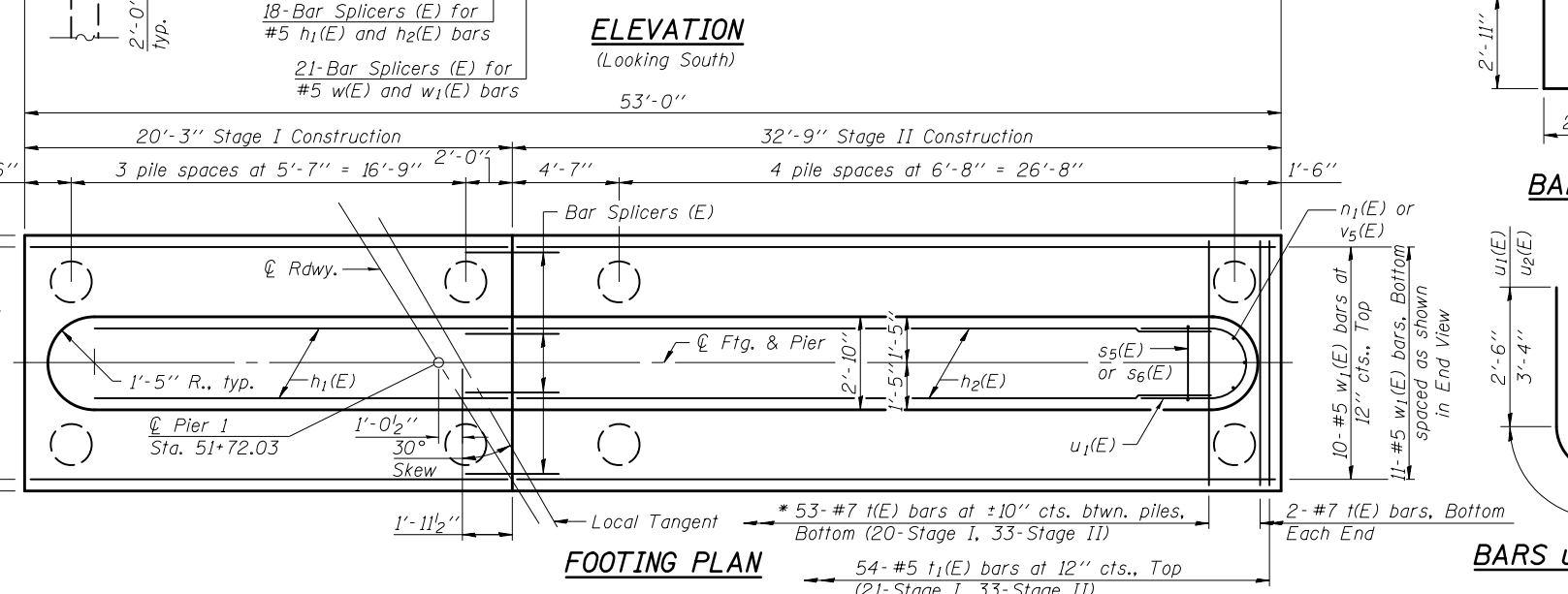
ELEVATION
(Looking South)

A & B DIMENSIONS

Bar	A	B
s ₅ (E)	2'-6"	6'-11"
s ₆ (E)	2'-6"	7'-5"
s ₈ (E)	2'-6"	2'-11"
s ₉ (E)	2'-6"	1'-11"
s ₁₀ (E)	2'-6"	2'-6"
s ₁₁ (E)	2'-6"	2'-2"
s ₁₂ (E)	10"	2'-6"

BARS

* 7 bars per 6'-8" space
 6 bars per 5'-7" space
 5 bars to west and 2 bars to east of stage const. jt.



FOOTING PLAN

BAR s₄(E)

BARS u₁(E) & u₂(E)

BILL OF MATERIAL

Bar	No.	Size	Length	Shape
h ₁ (E)	18	#5	17'-11"	—
h ₂ (E)	18	#5	30'-5"	—
h ₃ (E)	4	#5	23'-9"	—
h ₄ (E)	4	#5	36'-3"	—
h ₅ (E)	4	#5	6'-8"	—
h ₆ (E)	4	#5	23'-9"	—
h ₇ (E)	4	#5	10'-7"	—
h ₈ (E)	4	#5	29'-3"	—
n(E)	50	#8	4'-11"	U
n ₁ (E)	12	#7	7'-7"	U
p ₂ (E)	6	#8	19'-4"	—
p ₃ (E)	6	#8	31'-10"	—
p ₄ (E)	12	#9	23'-9"	—
p ₅ (E)	12	#9	36'-3"	—
p ₆ (E)	12	#4	7'-10"	—
s ₄ (E)	103	#6	12'-2"	□
s ₅ (E)	66	#7	16'-4"	□
s ₆ (E)	66	#6	17'-4"	□
s ₈ (E)	24	#5	8'-4"	□
s ₉ (E)	30	#5	6'-4"	□
s ₁₀ (E)	24	#6	7'-6"	□
s ₁₁ (E)	8	#6	6'-10"	□
s ₁₂ (E)	24	#6	5'-10"	□
sp(E)	5	#4	9'-8"	~
t(E)	57	#7	9'-8"	—
t ₁ (E)	54	#5	9'-8"	—
u ₁ (E)	16	#5	8'-8"	U
u ₂ (E)	10	#6	10'-4"	U
v ₄ (E)	50	#8	12'-1"	—
v ₅ (E)	12	#6	7'-5"	—
w(E)	21	#5	19'-11"	—
w ₁ (E)	21	#5	32'-5"	—
Structure Excavation	Cu. Yd.		330	
Concrete Structures	Cu. Yd.		134.2	
Reinforcement Bars, Epoxy Coated	Pound		18080	
Furnishing Metal Shell Piles 14" x 0.312"	Foot		527	
Driving Piles	Foot		527	
Test Pile Metal Shells	Each		1	
Pile Shoes	Each		18	
Concrete Sealer	Sq. Ft.		1888	

** Length is height of spiral.
 *** Bar Splicers for h₆(E) and h₇(E) bars must be placed 4" below the h₆(E) bars.