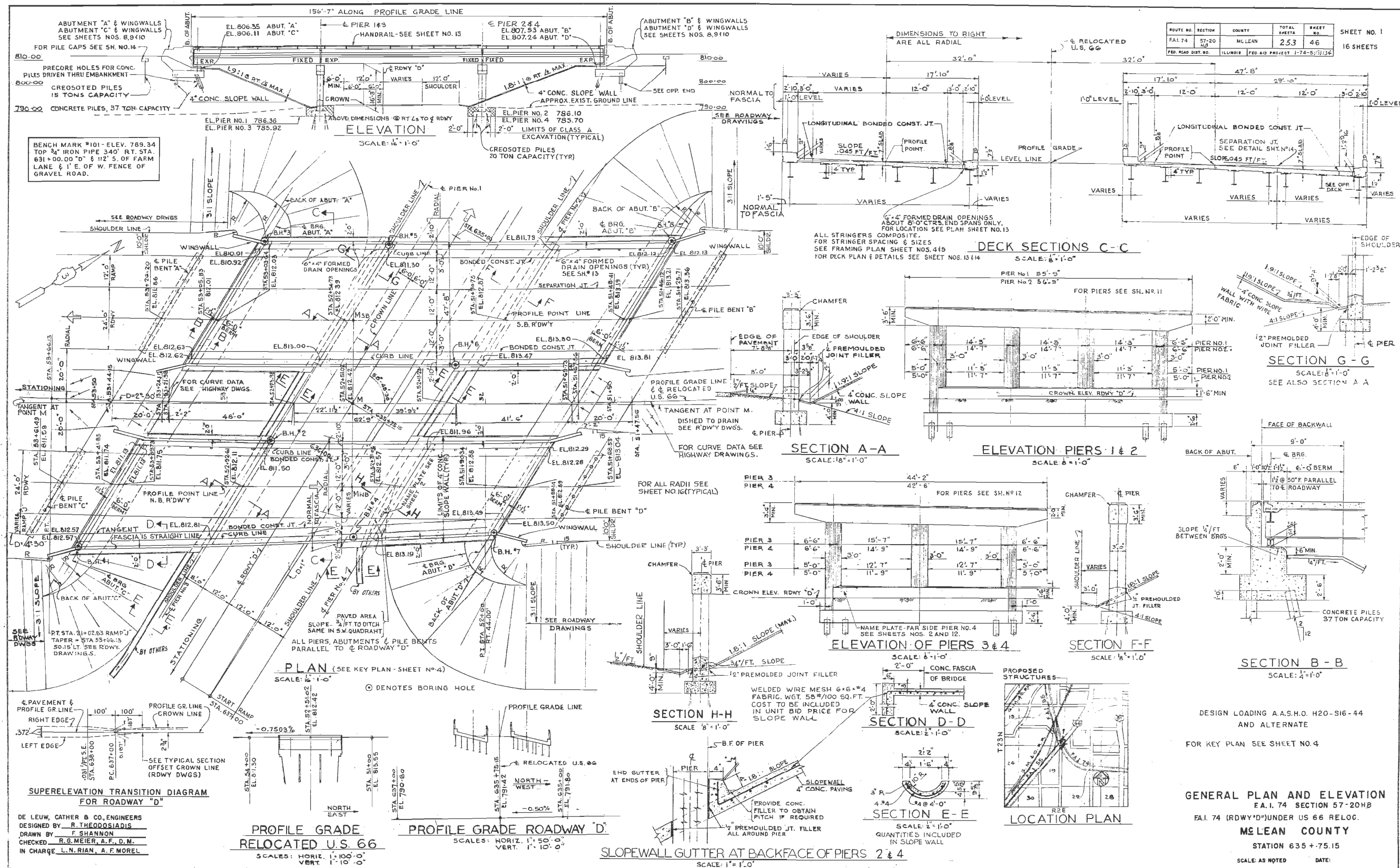


THIS DETAIL IS INCLUDED FOR INFORMATION ONLY



ROUTE NO.	SECTION	COUNTY	TOTAL SHEETS	SHEET NO.
704	57-20	MCLEAN	44	1
SHEET NO. 1 OF 16 SHEETS				

DE LEUW, CATHER & CO. ENGINEERS
 DESIGNED BY R. THEODORADIS
 DRAWN BY F. SHANNON
 CHECKED R.G. MEIER, A.F. D.M.
 IN CHARGE L.N. RIAN, A.F. MOREL

**PROFILE GRADE
 RELOCATED U.S. 66**
 SCALES: HORIZ. 1" = 100'-0"
 VERT. 1" = 10'-0"

PROFILE GRADE ROADWAY "D"
 SCALES: HORIZ. 1" = 50'-0"
 VERT. 1" = 10'-0"

SLOPEWALL GUTTER AT BACKFACE OF PIERS 2 & 4
 SCALE: 1" = 1'-0"

SECTION D-D
 SCALE: 2" = 1'-0"

SECTION E-E
 SCALE: 2" = 1'-0"

LOCATION PLAN

GENERAL PLAN AND ELEVATION
 F.A. 1.74 SECTION 57-20HB
 F.A. 1.74 (RDWY "D") UNDER US 66 RELOC.
 MCLEAN COUNTY
 STATION 635 + 75.15

SCALE: AS NOTED DATE:

861-45.21

FILE NAME =	USER NAME = detersbj	DESIGNED =	REVISED =	STATE OF ILLINOIS DEPARTMENT OF TRANSPORTATION	S.N. 057-0061 & S.N. 057-0062 EXISTING GP&E BRIDGE PLANS (1963)	F.A.P. RTE.	SECTION	COUNTY	TOTAL SHEETS	SHEET NO.
ci:\pw\work\p1dot\detersbj\d0157116\0570570-sht-details.dgn	PLOT SCALE = 40.0000' / in.	CHECKED =	REVISED =			704	57-20(HB,HB-1BR-1)	MCLEAN	440	266
PLOT DATE = 8/13/2013	DATE =	REVISED =	REVISED =			CONTRACT NO. 70570			ILLINOIS FED. AID PROJECT	
						SCALE:	SHEET NO. 1 OF 1 SHEETS	STA.	TO STA.	