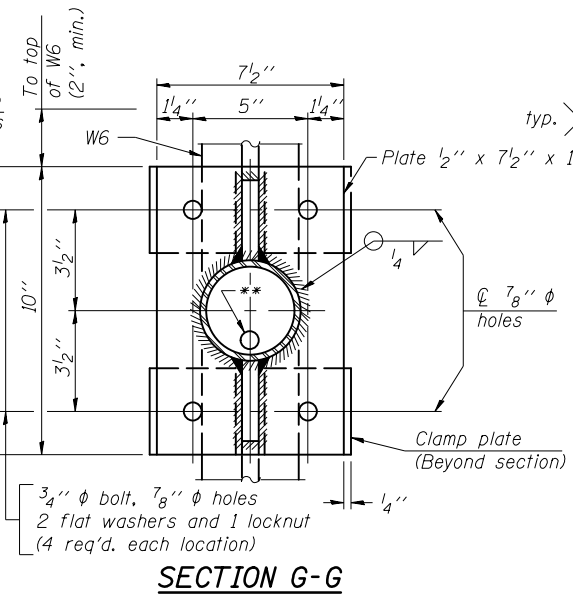
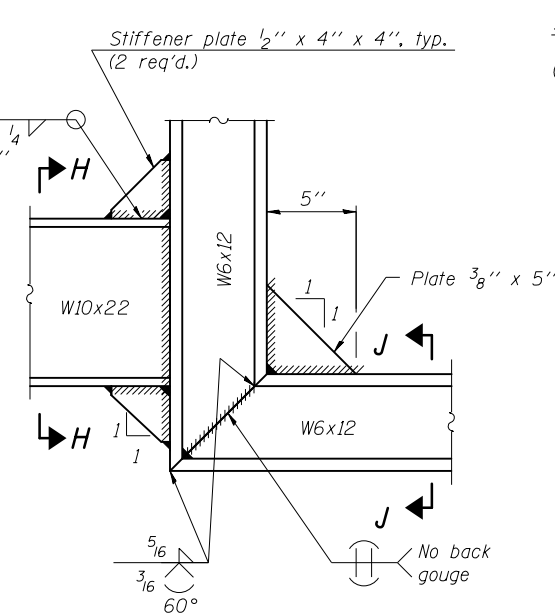


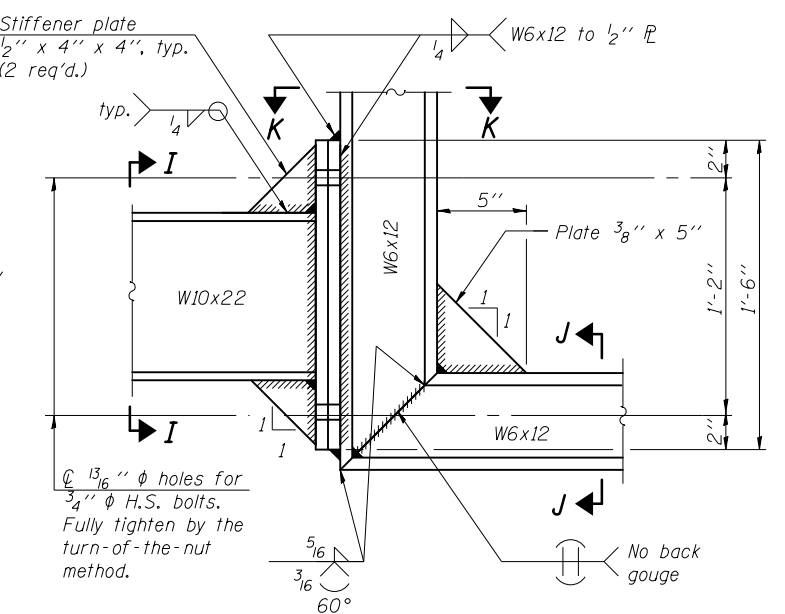
DETAIL A



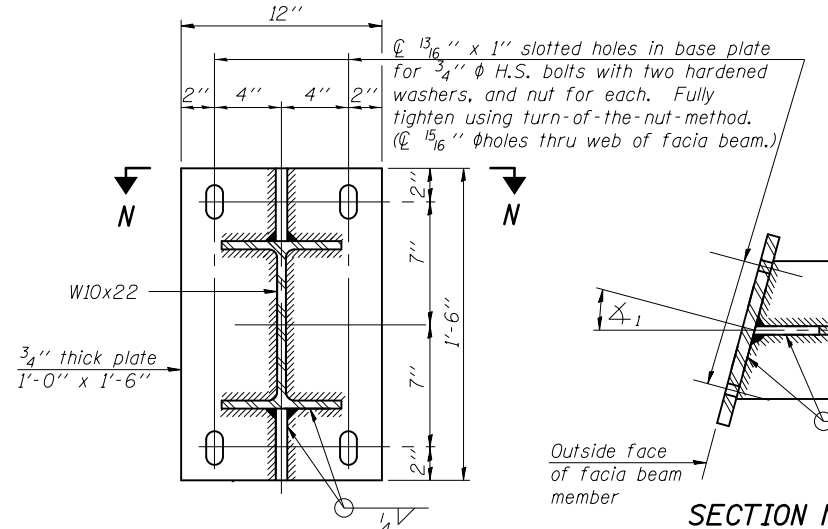
SECTION G-G



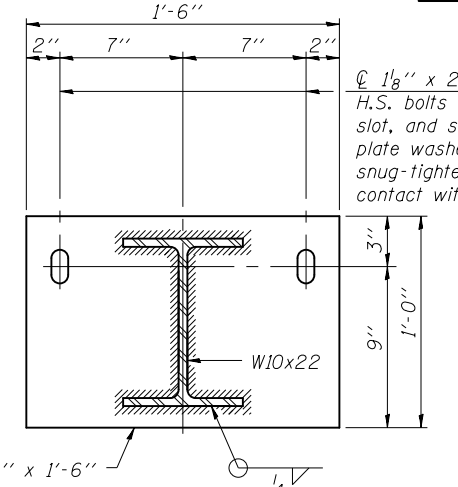
DETAIL B - WELDED W10x22 TO W6x12 CONNECTION



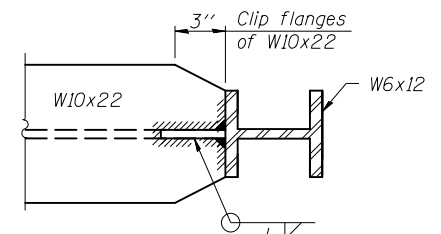
DETAIL B - ALTERNATE BOLTED W10x22 TO W6x12 CONNECTION



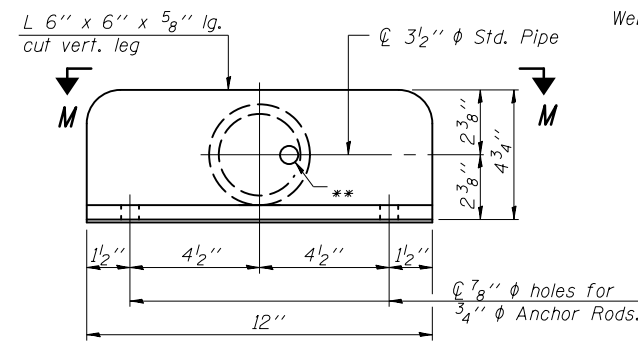
SECTION N-N Plate 1" x 12" x 1'-6" Skewed connection detail for W10x22 to fascia beam.



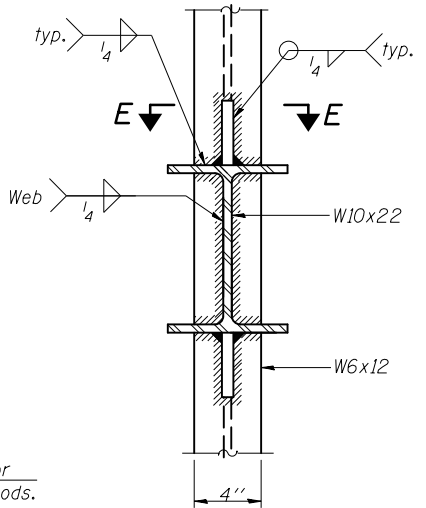
SECTION D-D



SECTION E-E

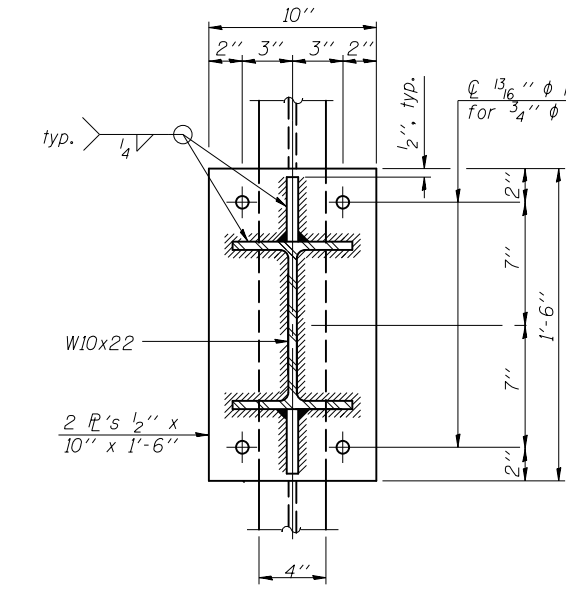


VIEW F-F



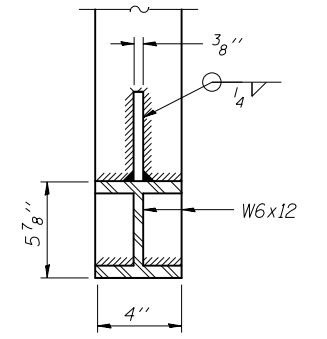
SECTION H-H

SECTION C-C Steel beam or girder connection plate details

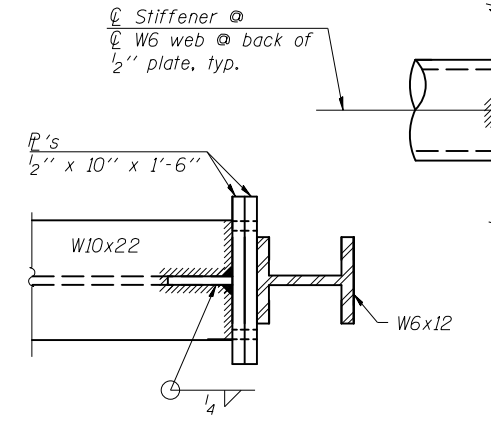


SECTION I-I

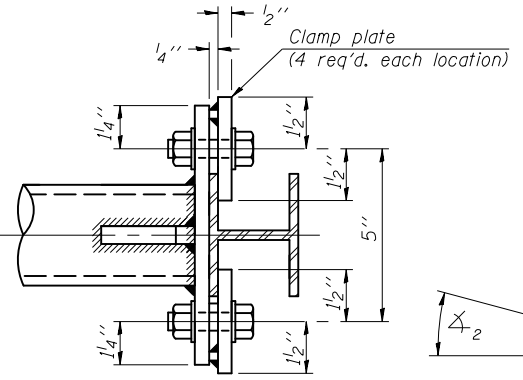
Note: For constant slab overhang at fascia beam, $\Delta_1 = \Delta_2 =$ sign angle. For flared beams or other special cases where $\Delta_1 \neq \Delta_2$, $\Delta_1 =$ sign angle.



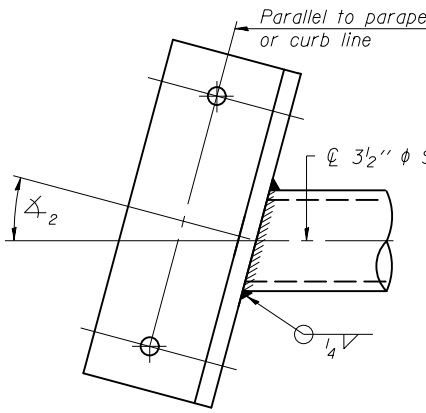
SECTION J-J



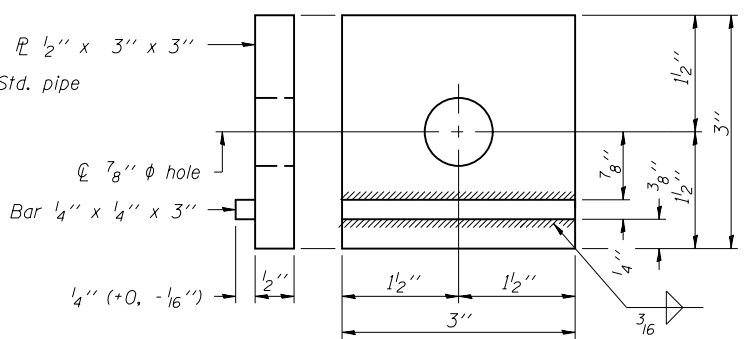
SECTION K-K



SECTION L-L



SECTION M-M Skewed connection detail for 3 1/2" pipe to parapet.



CLAMP PLATE DETAILS

BM-3

1-20-11

FILE NAME = \$FILES*	USER NAME = piersonbr	DESIGNED - BAS	REVISED -
MAURER-STUTZ ENGINEERS SURVEYORS	PLOT SCALE =	CHECKED - JAE	REVISED -
	PLOT DATE = 8/6/2013 \$TIME*	DRAWN - SGM	REVISED -
		CHECKED - BAS	REVISED -

STATE OF ILLINOIS
DEPARTMENT OF TRANSPORTATION

BRIDGE MOUNT SIGN STRUCTURES
CONNECTION DETAILS

SHEET NO. 3 OF 4 SHEETS

F.A.I. RTE.	SECTION	COUNTY	TOTAL SHEETS	SHEET NO.
74	(57-20H)BR	MCLEAN	440	270
CONTRACT NO. 70570				

ILLINOIS FED. AID PROJECT