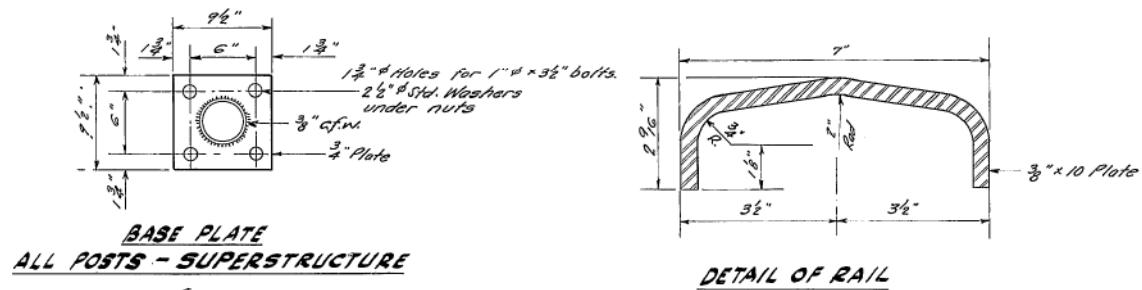
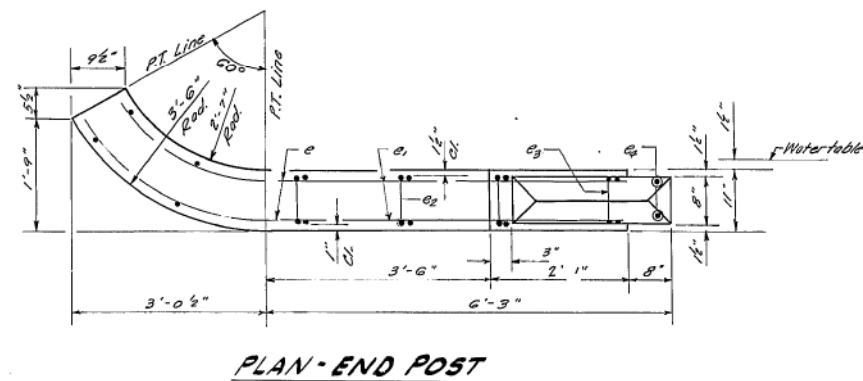
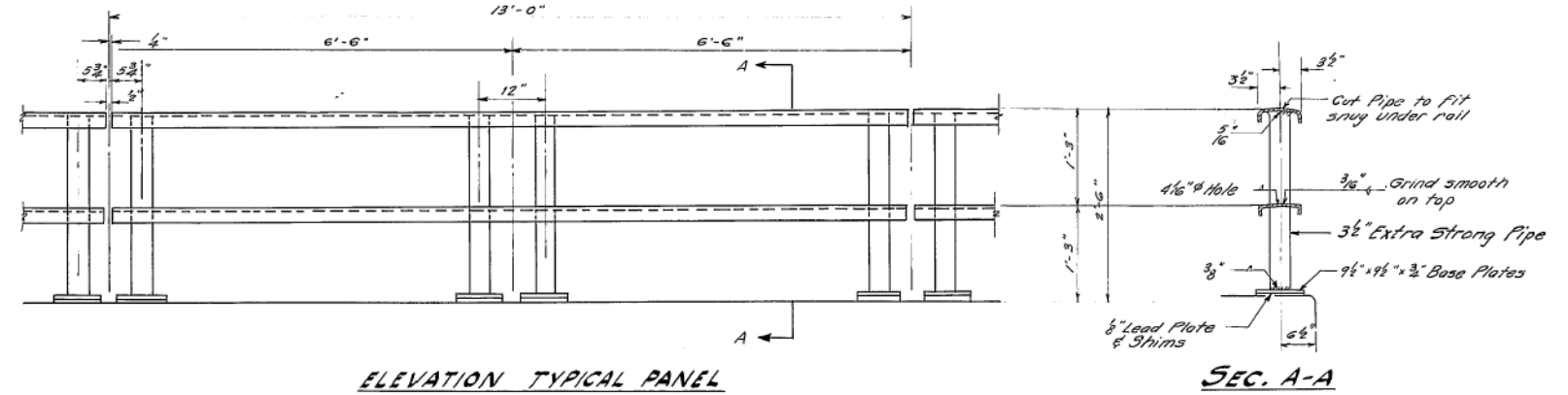
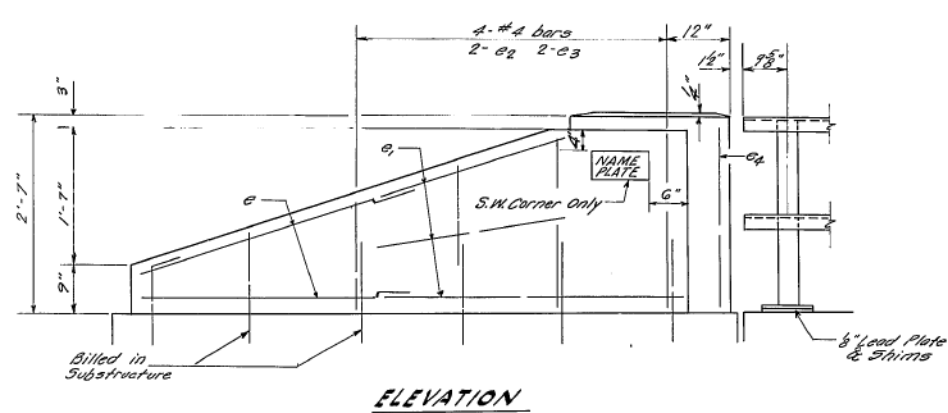
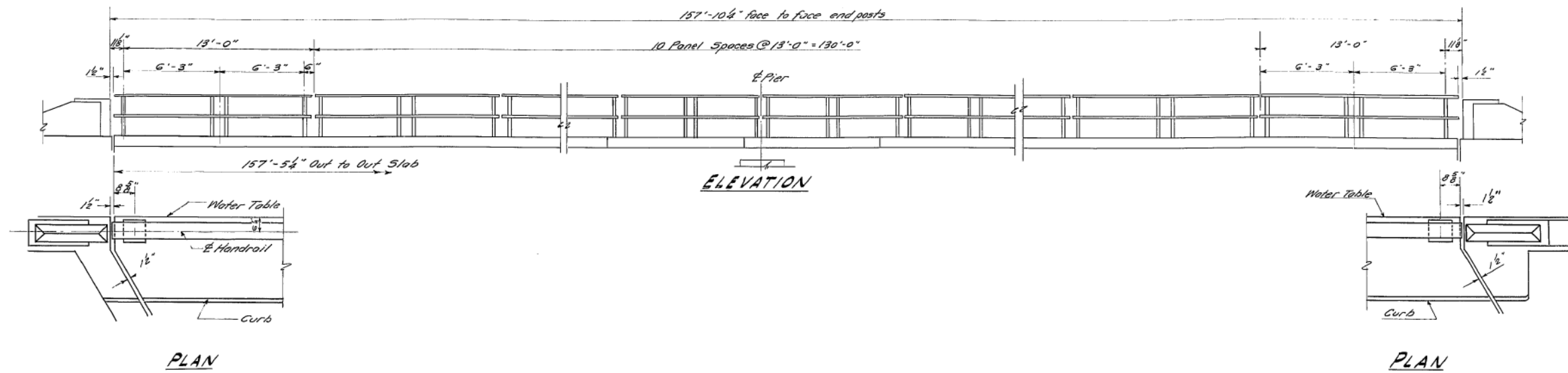


STATE OF ILLINOIS
DEPARTMENT OF PUBLIC WORKS & BUILDINGS
DIVISION OF HIGHWAYS

ROUTE NO.	SECTION	COUNTY	TOTAL SHEETS	SHEET NO.
S. & L. 48 P.A.	136BR	Christian	26	9
FED. ROAD DIST. NO. 7	ILLINOIS	FED. AID PROJECT		8 SHEETS



BILL OF MATERIAL

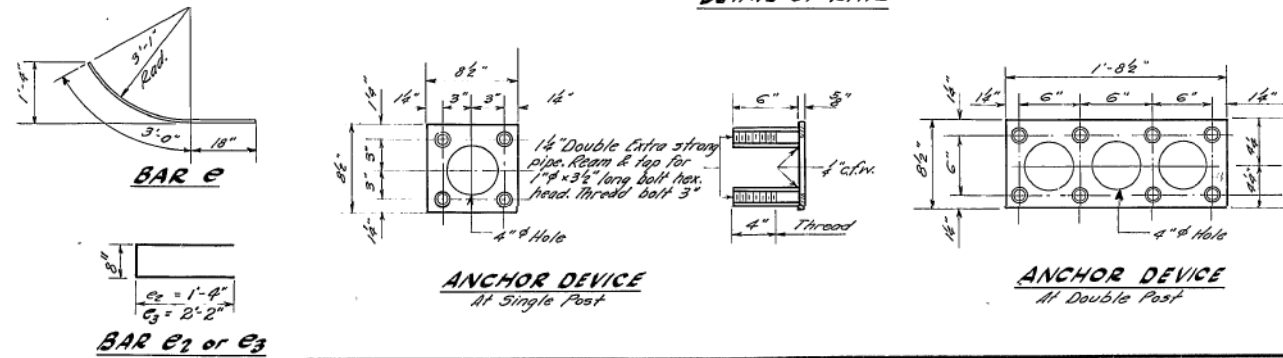
Handrail Concrete	Cu. Yd.	2.3
Reinforcement Bars	Lbs.	190
Metal Handrail	Lin. Ft.	316

GENERAL NOTES
All End Posts shall be Handrail Concrete.
Provide 1-1/8" shim and 2-1/2" shims for 50% of the Posts.
For Connection Details for Bent Plate Rail Panels See Sh. 4A.

DESIGNED: J.F. Panko
CHECKED: J. Albrecht
DRAWN: B. Brown
APPROVED: P.R. Bartelme
APRIL 27 1960
EXAMINED: V.M. Romaine
PASSED: P.S. Shurt
ENGINEER OF DESIGN
CHIEF HIGHWAY ENGINEER

BILL OF REINFORCEMENT

Bar	No.	Size	Length	Shops
e	16	#4	4'-6"	
e1	24	#4	5'-6"	
e2	8	#4	3'-4"	
e3	8	#4	5'-0"	
e4	8	#4	2'-3"	



HANDRAIL
SBI RT. 48 SEC. 136 BR
CHRISTIAN COUNTY
Sta. 627+01

FOR INFORMATION ONLY

Design firm
no. 184001036

whks
engineers • planners • land surveyors

USER NAME = \$OPERATOR\$	DESIGNED - TJZ	REVISED
FILE NAME = 0110514-72A61.dgn	CHECKED - CWC	REVISED
PLOT SCALE = 0:2.0000 1' = 1/4"	DRAWN - DLH	REVISED
PLOT DATE = 8/16/2013	CHECKED - TJZ	REVISED

STATE OF ILLINOIS
DEPARTMENT OF TRANSPORTATION

EXISTING BRIDGE PLANS
STRUCTURE NO. 011-0514

SHEET NO. 29 OF 31 SHEETS

F.A.P. RTE.	SECTION	COUNTY	TOTAL SHEETS	SHEET NO.
75 (IL 27) & 714 (IL 48)	(4)I; 136B-1	CHRISTIAN	97	69
			CONTRACT NO. 72A61	
			ILLINOIS FED. AID PROJECT	