

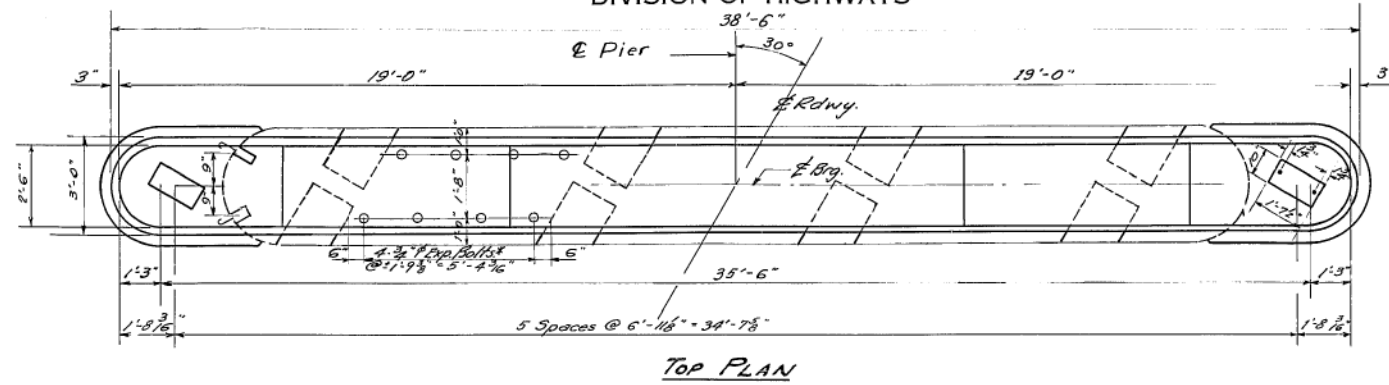
STATE OF ILLINOIS
DEPARTMENT OF PUBLIC WORKS & BUILDINGS
DIVISION OF HIGHWAYS

ROUTE NO.	DISTRICT	COUNTY	TOTAL SHEETS	SHEET NO.
S.B.I. 48 P.A.	136BR	Christian	26	11
FED. ROAD DIST. NO. 7		ILLINOIS	FED. AID PROJECT	

SHEET NO. 5
8 SHEETS

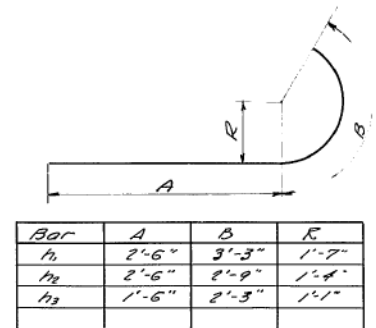
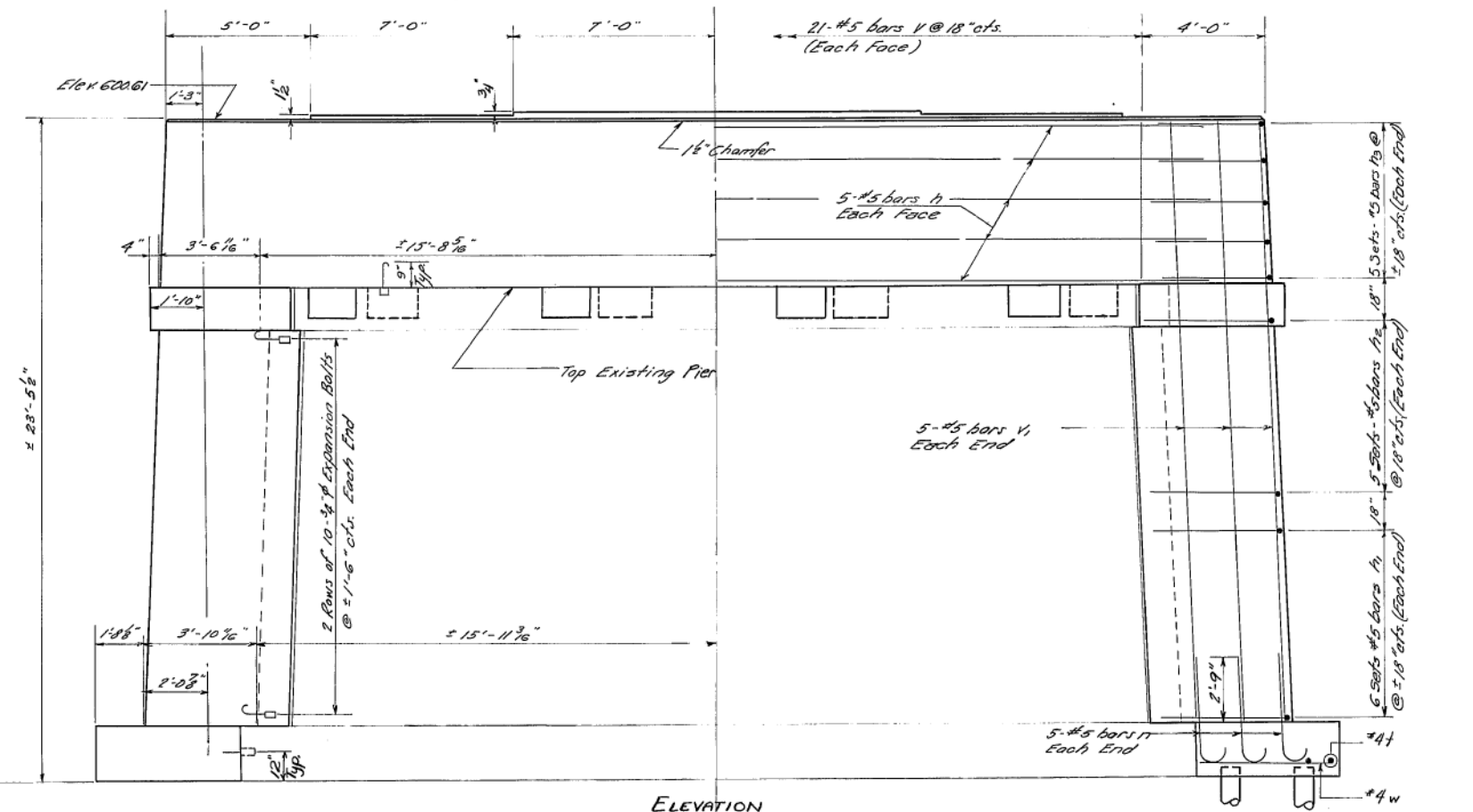
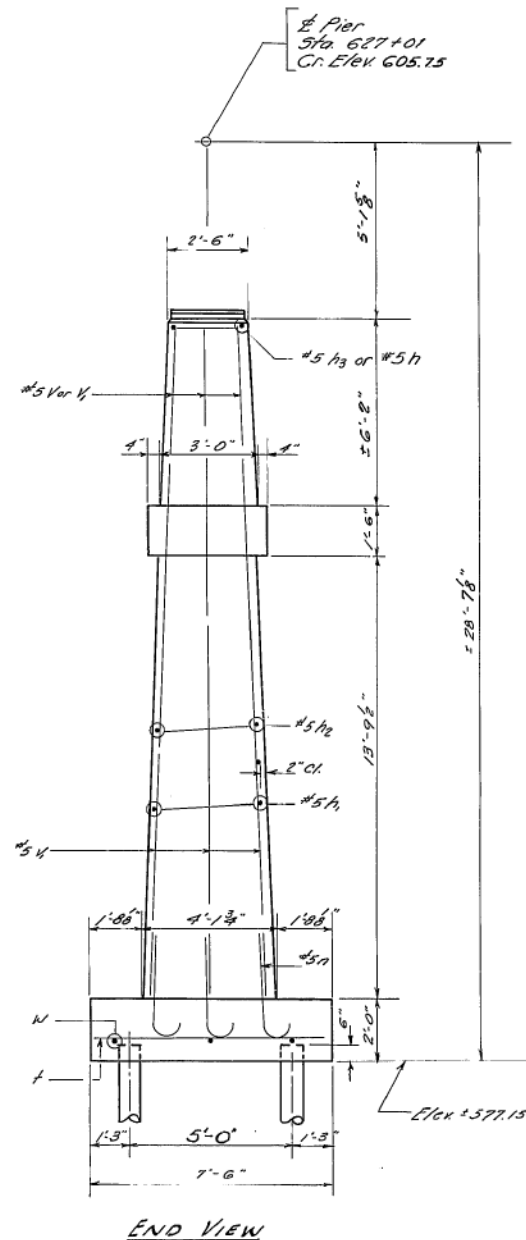
FILE DATA

Type: Untreated Timber
Capacity: 20 Tons
Lof. Length: 12 Ft.
No. Ropes: 8



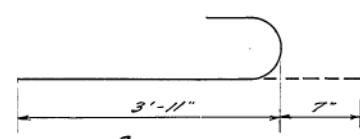
Note: All existing beam pockets shall be scraped, cleaned, and filled with concrete

*Typical spacing of expansion bolts between beam pockets, top of existing pier. See Standard 2126-1 for Expansion Bolt Details. Hooked bolt shall extend 9" into new concrete



Bar	A	B	R
h ₁	2'-6"	3'-3"	1'-7"
h ₂	2'-6"	2'-9"	1'-4"
h ₃	1'-6"	2'-3"	1'-1"

BARs h₁, h₂, & h₃



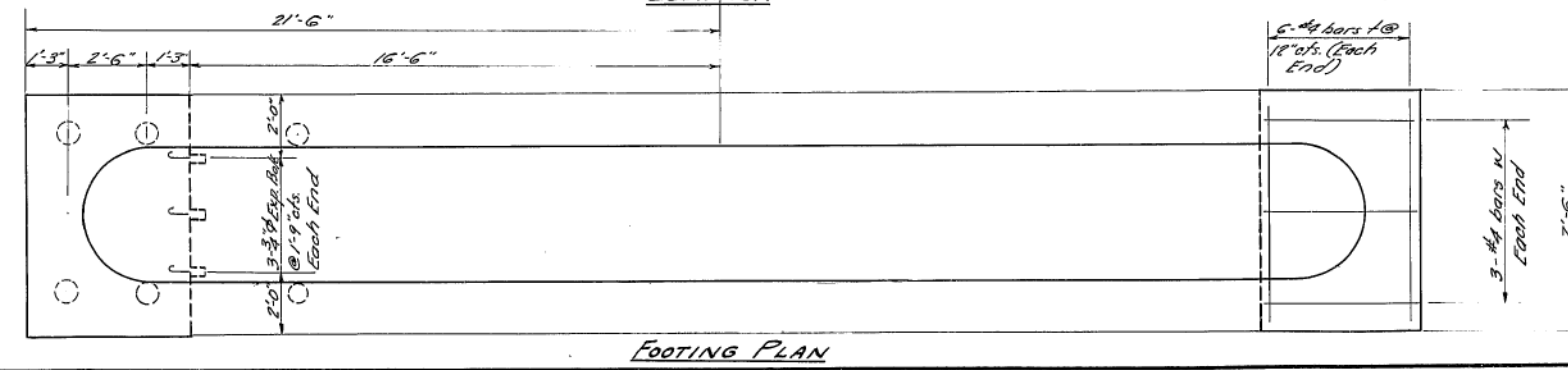
BAR-N

BILL OF MATERIAL

Bar	No.	Size	Length	Shape
h ₁	20	#5	18'-0"	—
h ₂	24	#5	5'-9"	—
h ₃	20	#5	5'-3"	—
h ₃	20	#5	3'-9"	—
n	10	#5	4'-6"	—
t	18	#4	7'-3"	—
v	42	#5	5'-9"	—
v	10	#5	21'-3"	—
w	6	#4	4'-9"	—

Class A Concrete	Cu. Yds.	45.4
Reinforcement Bars	Lbs.	1300
Expansion Bolts (3/4")	Each	70
Untreated Timber Piles	Lin. Ft.	96

PIERS
S.B.I. Rt. 48 - Sec. 136 BR
CHRISTIAN COUNTY
STA. 627+01



DESIGNED: J. F. Pitts
CHECKED: J. C. Brown
DRAWN: J. C. Brown
APPROVED: R. R. Bartchmeyer
APRIL 27 1960
EXAMINED: V. M. Roman
PASSED: C. P. Shurtz
ENGINEER OF DESIGN
CHIEF HIGHWAY ENGINEER

FOR INFORMATION ONLY