

STATE OF ILLINOIS
DEPARTMENT OF TRANSPORTATION
DIVISION OF HIGHWAYS

**PROPOSED
HIGHWAY PLANS**

FAI 72 (I-72)
SECTION 84-10-1RS-3, 84-10-2RS-4)BR,I
PROJECT
HMA RESURFACING, BRIDGE REHABILITATION
SANGAMON COUNTY



LOCATION OF SECTION INDICATED THUS: - ■ -

INDEX OF SHEETS

1	COVER SHEET
2	GENERAL NOTES AND COMMITMENTS
3-11	SUMMARY OF QUANTITIES
12-16	TYPICAL SECTIONS
17-25	SCHEDULES
26	ALIGNMENT, TIES, AND BENCHMARKS
27-33	PLAN AND PROFILE SHEETS
34-39	MEDIAN & ISLAND DETAILS
40-52	MAINTENANCE OF TRAFFIC PLANS
53-54	DOWELLED MEDIAN DETAIL
55-81	BRIDGE PLANS 084-0150 (CH-12)
82-89	BRIDGE PLANS 084-0151 (TR-171)
90-114	BRIDGE PLANS 084-0154 (TR-420)
115-116	SUPERELEVATION DETAILS
117	BUTT JOINT AND HMA RAMP DETAILS
118	BRIDGE APPROACH PAVEMENT CONNECTOR DETAIL
119	MISCELLANEOUS DETAILS
120-136	CROSS SECTIONS

HIGHWAY STANDARDS

000001-06	701401-07
001001-02	701406-07
001006	701411-08
442001-04	701421-05
442101-07	701422-05
442201-03	701446-04
635001-01	701451-01
642001-02	701456-02
701101-03	701502-05
701106-02	701901-02
701201-04	780001-03
701306-03	781001-03
701321-13	
701400-06	

SN 084-0154
STA. 299 + 80.31 TR 420 =
STA. 269 + 23.08 FAI 72

BEGIN IMPROVEMENT
STA. 276 + 08.75

C-96-085-09

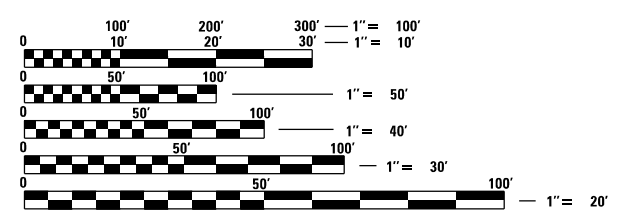
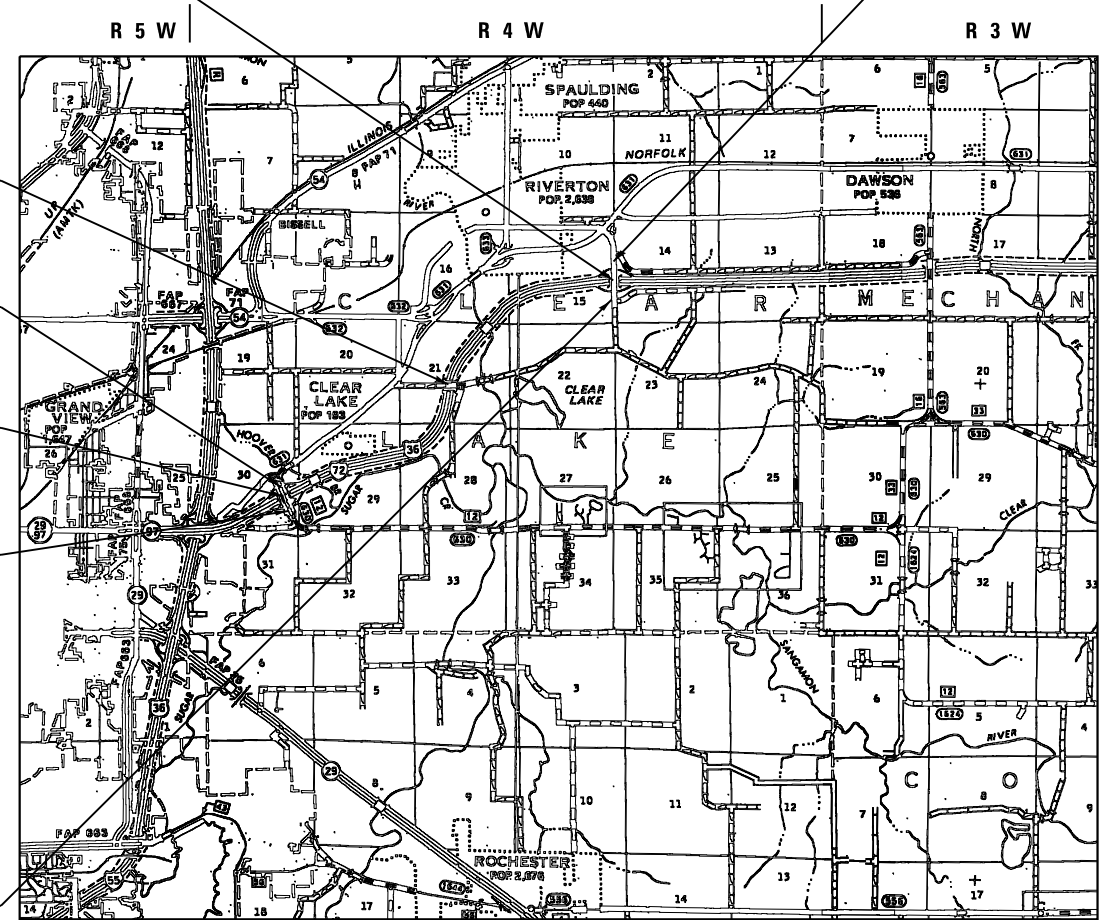
SN 084-0151
STA. 200 + 00.00 TR 171 =
STA. 161 + 04.98 FAI 72

BEGIN IMPROVEMENT
STA. 85.48.50 CH 12

SN 084-0150
STA. 100 + 01.88 MECHANICSBURG RD. =
STA. 48 + 76.46 FAI 72

END IMPROVEMENT
STA. 112 + 26.46 CH 12

END IMPROVEMENT
STA. 313 + 50.00 TR 420



FULL SIZE PLANS HAVE BEEN PREPARED USING STANDARD ENGINEERING SCALES. REDUCED SIZED PLANS WILL NOT CONFORM TO STANDARD SCALES. IN MAKING MEASUREMENTS ON REDUCED PLANS, THE ABOVE SCALES MAY BE USED.

J.U.L.I.E.
JOINT UTILITY LOCATION INFORMATION FOR EXCAVATION
1-800-892-0123
OR 811

SENIOR TEAM ENGINEER : VINCE MADONIA (217) 785-9046
TEAM ENGINEER : VICTOR YOUNG (217) 524-0472
CONTRACT NO. 72C90

FAI 72	CH 12 (MECHANICSBURG RD.)	TR 171 (OAK CREST RD.)	TR 420 (OVERPASS RD.)
FUNCTION CLASS=INTERSTATE	FUNCTION CLASS= OTHER PRINCIPAL Arterial	FUNCTION CLASS=LOCAL ROAD	FUNCTION CLASS=LOCAL ROAD
A.D.T. (2012) 13,500	A.D.T. (2012) 4450	A.D.T. (2012) 2000	A.D.T. (2012) 2150
SU (2012) 610	SU 310	SU 180	SU 150
MU (2012) 1,430	MU 220	MU 60	MU 110
PV (2012) 11,460	PV 3920	PV 1760	PV 1890

NET LENGTH OF CH 12 (MACHANICSBURG RD.) = 1,6300.00 FT = 0.309 MILES
NET LENGTH OF TR 420 (OVERPASS RD.) = 1,589.02 FT = 0.0301 MILES
TOTAL LENGTH OF PROJECT = 17,889.02 FT = 3.388 MILES

STATE OF ILLINOIS
DEPARTMENT OF TRANSPORTATION
DIVISION OF HIGHWAYS

SUBMITTED _____ 20 _____

DEPUTY DIRECTOR OF HIGHWAYS, REGION ENGINEER

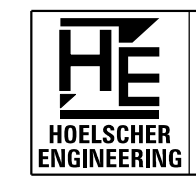
_____ 20 _____

ENGINEER OF DESIGN AND ENVIRONMENT

_____ 20 _____

DIRECTOR OF HIGHWAYS, CHIEF ENGINEER

**PRINTED BY THE AUTHORITY
OF THE STATE OF ILLINOIS**



11 Executive Drive Suite 12
Fairview Heights, Illinois 62208
(618) 624-8610
(618) 624-8611 (fax)

2501 Chatham Road, Suite 120
Springfield, Illinois 62704
(217) 698-8610
(217) 698-8608 (fax)



DATE: _____
LICENSE EXP. 11/30/2013