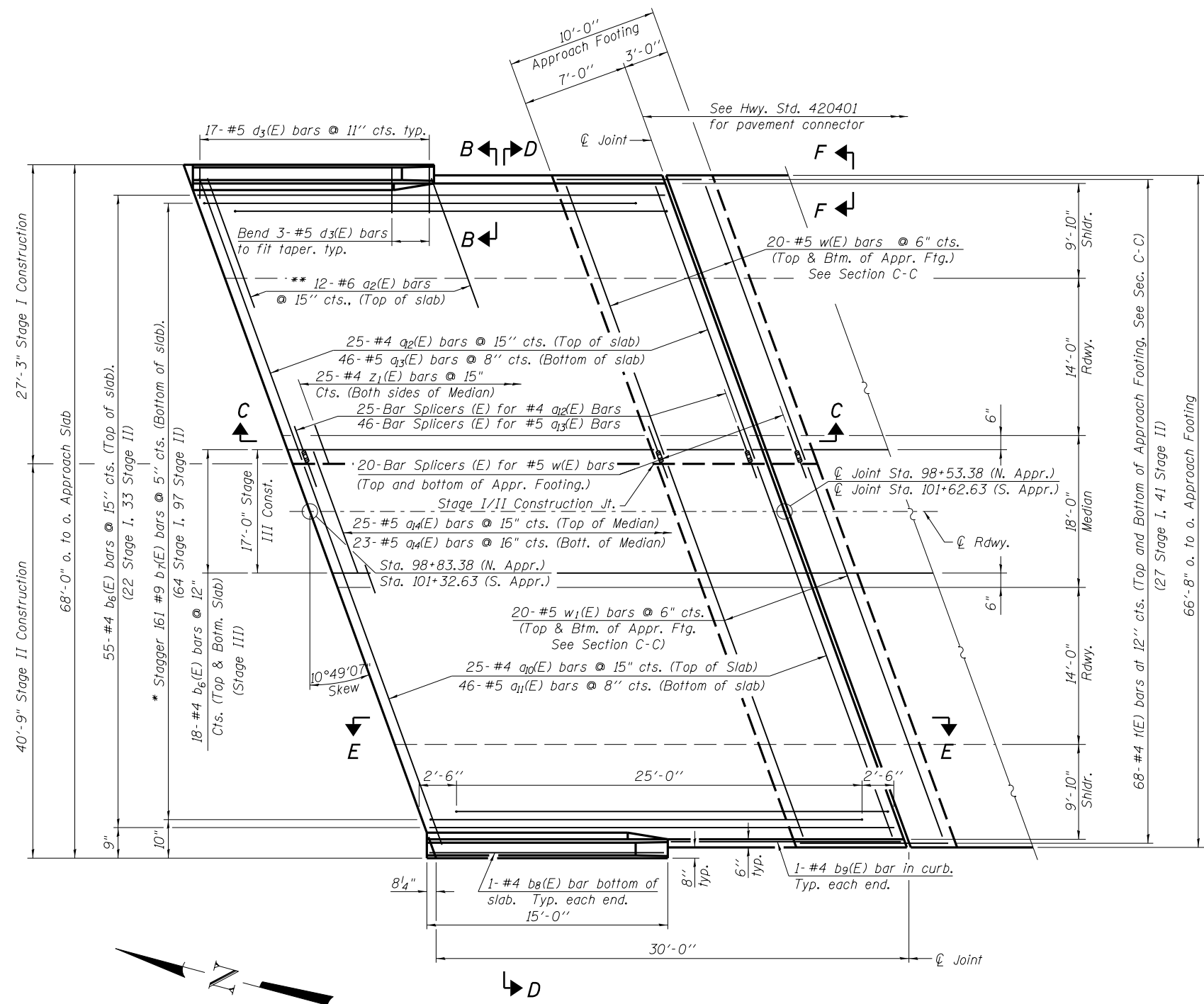


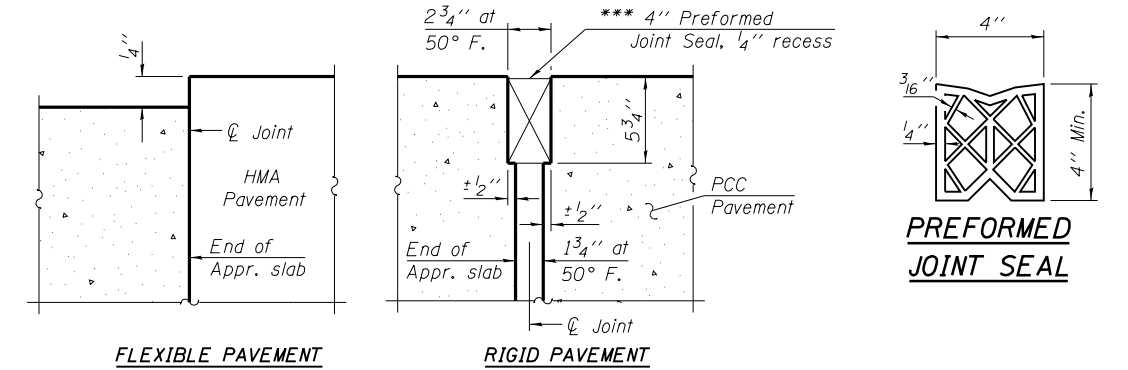
Notes:
See sheet 15 of 27 for Sections C-C & D-D and View E-E.
a₁(E), a₁₁(E), a₁₂(E) and a₁₃(E) bar spacings measured along \varnothing Rdwy.

*** Cost included with Concrete Superstructure.

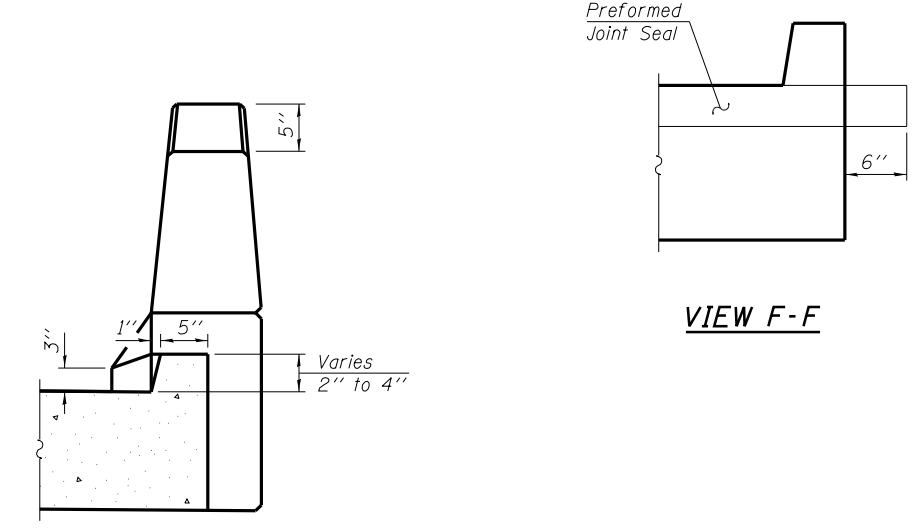


PLAN
(S. Appr. Shown, N. Appr. Similar)

* Tilt #9 b₇(E) bars as required to maintain clearance.
** Space between a₁₀(E) or a₁₂(E) bars, typ. each parapet.



DETAIL A



VIEW B-B

VIEW F-F

(Sheet 1 of 2)

FILE NAME = CH12 over FA1-72.dgn	USER NAME =	DESIGNED - SAL	REVISD -	STATE OF ILLINOIS DEPARTMENT OF TRANSPORTATION	BRIDGE APPROACH SLAB DETAILS MECHANICSBURG RD. OVER F.A.I.-72 - S.N. 084-0150	F.A.I. RTE. = 72	SECTION = (84-10-1,2) R5-3	COUNTY = SANGAMON	TOTAL SHEETS = 194	SHEET NO. = 126	
	PLOT SCALE =	CHECKED - MTH	REVISD -			CONTRACT NO. 72C90					
	PLOT DATE =	DRAWN - TJW	REVISD -			SHEET NO. 14 OF 27 SHEETS					
		CHECKED - MTH	REVISD -			FED. ROAD DIST. NO. 6 ILLINOIS FED. AID PROJECT					