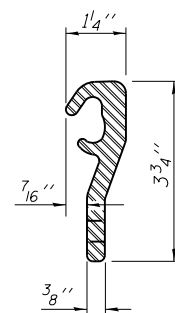
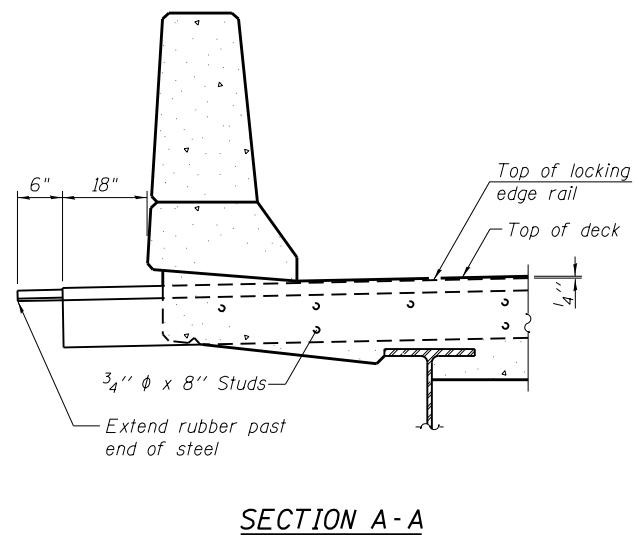
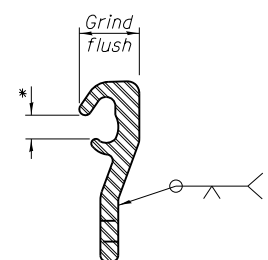


**SECTION THRU STRIP SEAL JOINT**  
(Dimensions at Rt. L's)



**LOCKING EDGE RAIL**



**LOCKING EDGE RAIL SPLICE**

\* Omit weld at seal opening.

Notes:

The strip seal shall be made continuous and shall have a minimum thickness of 1/4". The configuration of the strip seal shall match the configuration of the Locking Edge Rails. Open or "webbed" strip seal gland configurations are not permitted. The gland shall be sized for a maximum rated movement of 4 inches.

The Locking Edge Rails depicted are conceptual only, except for the minimum dimensions shown. The actual configuration of the Locking Edge Rails and matching strip seal may vary from manufacturer to manufacturer. Flanged edge rails will not be allowed. Locking Edge Rails may be spliced at slope discontinuities and stage construction joint. The manufacturer's recommended installation methods shall be followed.

All steel components shall be galvanized after fabrication according to Article 520.03 of the Standard Specifications. Maximum space between rail segments at stage lines shall be 3/16", sealed with a suitable sealant.

Parapet plates and anchorage studs included in the cost of Preformed Joint Strip Seal.

The inside of the Locking Edge Railing groove shall be free of weld residue.

**BILL OF MATERIAL**

Item	Unit	Total
Preformed Joint Strip Seal	Foot	72

FILE NAME = Oak Crest Rd. over 1-72.dgn	USER NAME =	DESIGNED - SAL	REVISED -
		CHECKED - MTH	REVISED -
	PLOT SCALE =	DRAWN - TJW	REVISED -
	PLOT DATE =	CHECKED - MTH	REVISED -

STATE OF ILLINOIS  
DEPARTMENT OF TRANSPORTATION

PREFORMED JOINT STRIP SEAL  
OAK CREST RD. (TR-171) OVER F.A.I.-72 - S.N. 084-0151

SHEET NO. 5 OF 8 SHEETS

F.A.I. RTE.	SECTION	COUNTY	TOTAL SHEETS	SHEET NO.
72	.	SANGAMON	194	144
• (84-10-1RS-3, 84-10-2RS-R)BR.1			CONTRACT NO. 72C90	
FED. ROAD DIST. NO. 6 ILLINOIS FED. AID PROJECT				