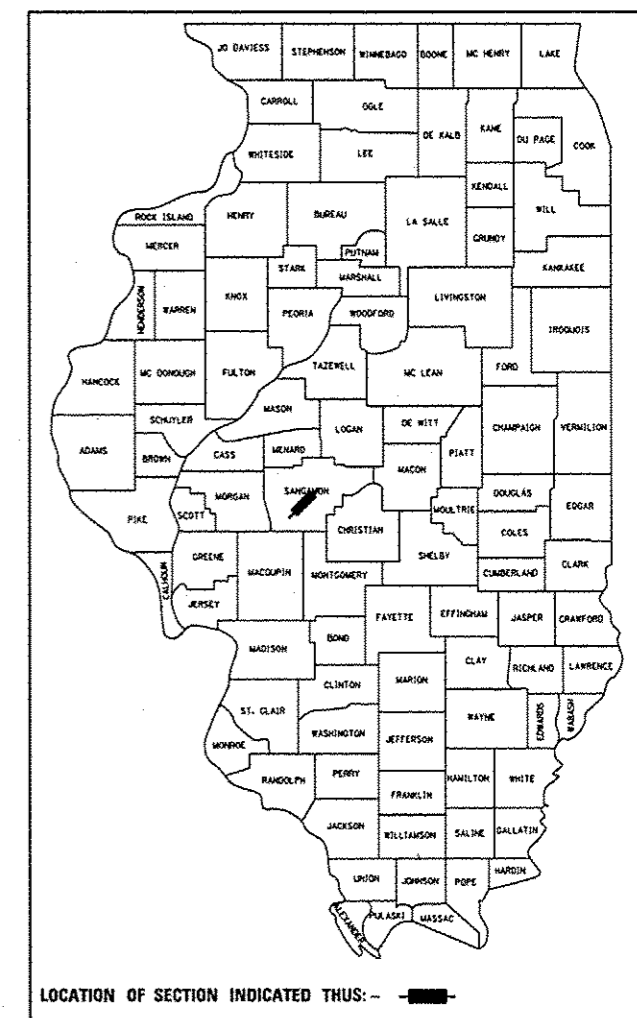


F.A.I. RTE.	SECTION	COUNTY	TOTAL SHEETS	SHEET NO.
I-72		SANGAMON	194	1
		ILLINOIS	CONTRACT NO. 72C90	

\* (84-10-1RS-3, 84-10-2RS-4)BR, I

D-96-085-09



FAI 72

FUNCTION CLASS = INTERSTATE  
 ADT (2012) 13,500  
 SU (2012) 610  
 MU (2012) 1,430  
 PV (2012) 11,460

STATE OF ILLINOIS  
 DEPARTMENT OF TRANSPORTATION  
 DIVISION OF HIGHWAYS

SUBMITTED September 6, 2013  
Roger D. Dickel  
 DEPUTY DIRECTOR OF HIGHWAYS, REGION ENGINEER

October 4, 2013  
John D. Baranzelli, P.E.  
 ENGINEER OF DESIGN AND ENVIRONMENT

October 4, 2013  
Emet Osman, P.E.  
 DIRECTOR OF HIGHWAYS, CHIEF ENGINEER

**PRINTED BY THE AUTHORITY  
 OF THE STATE OF ILLINOIS**

# STATE OF ILLINOIS

## DEPARTMENT OF TRANSPORTATION

### DIVISION OF HIGHWAYS

# PROPOSED HIGHWAY PLANS

SECTION **FAI 72 (I-72)**  
**(84-10-1RS-3, 84-10-2RS-4)BR, I**  
 PROJECT **ACNHPP-0072(401)**  
**HMA RESURFACING, BRIDGE REHABILITATION**  
**SANGAMON COUNTY**

**C-96-085-09**

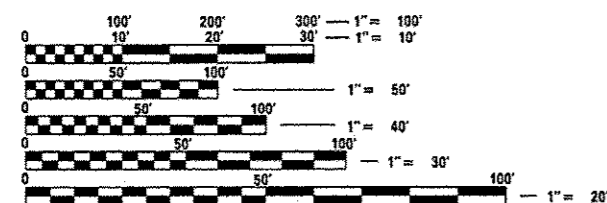
### PART "A"

- 1 PART "A"  
BEGIN IMPROVEMENT  
SECTION (84-10-1RS-3, 84-10-2RS-4)BR, I  
I-72 STATION 13+32.00 (EB) &  
STA. 15+40.00 (WB)
- 2 SN 084-0150  
STA. 48+76.46 (FAI 72) =  
STA. 100+01.88 (MECHANICSBURG RD)
- 3 SN 084-2011  
EXIST. BOX CULVERT  
STA. 68+55.02
- 4 SN 084-0151  
STA. 161+04.98 (FAI 172) =  
STA. 200+00.00 (TR 171)
- 5 BRIDGE OMISSION:  
SN 084-0152 OVER SANGAMON RIVER  
STA. 193+08.04 TO STA. 201+56.86 (FAI 72, WB)  
SN 084-0153 OVER SANGAMON RIVER  
STA. 193+22.30 TO STA. 201+41.12 (FAI 72, EB)
- 6 SN 084-0154  
STA. 269+23.08 (FAI 72) =  
STA. 299+80.31 (TR 420)
- 7 PART "A"  
END IMPROVEMENT  
SECTION (84-10-1RS-3, 84-10-2RS-4)BR, I  
STATION EQUATION:  
STA. 295+70.43 (BK) = STA. 0+00.00 (AH)
- 8 PART "A"  
SHOULDER RUMBLE STRIPS IMPROVEMENT  
I-72/CLEARLAKE AVE.  
STA. 34+00.00 TO STA. 70+81.00 (EB)  
STA. 34+00.00 TO STA. 70+81.00 (WB)

### PART "B"

- 8 PART "B"  
BEGIN IMPROVEMENT  
SECTION (84-10-1RS-3, 84-10-2RS-4)BR, I  
STA. 276+08.75 (TR 420)
- 9 PART "B"  
END IMPROVEMENT  
SECTION (84-10-1RS-3, 84-10-2RS-4)BR, I  
STA. 313+50.00 (TR 420)
- 10 PART "B"  
BEGIN IMPROVEMENT  
STA. 85+48.50 (CH 12)
- 11 PART "B"  
END IMPROVEMENT  
STA. 112+26.46 (CH 12)

FOR INDEX OF SHEETS, SEE SHEET NO. 2 OF 194

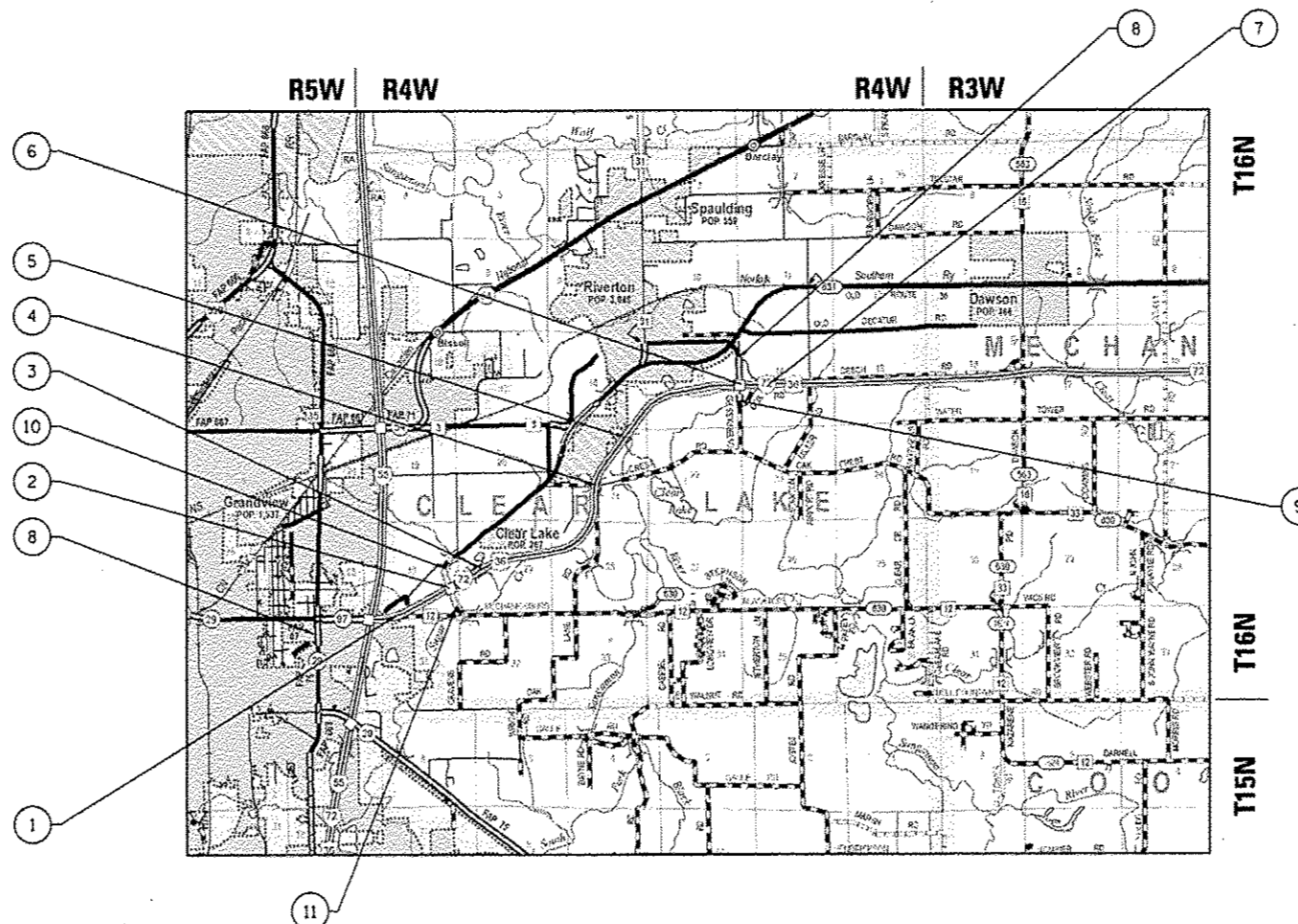


FULL SIZE PLANS HAVE BEEN PREPARED USING STANDARD ENGINEERING SCALES. REDUCED SIZED PLANS WILL NOT CONFORM TO STANDARD SCALES. IN MAKING MEASUREMENTS ON REDUCED PLANS, THE ABOVE SCALES MAY BE USED.

J.U.L.I.E.  
 JOINT UTILITY LOCATION INFORMATION FOR EXCAVATION  
 1-800-892-0123  
 OR 811

PROJECT ENGINEER: VINCE MADONIA (217) 785-9046  
 PROJECT MANAGER: VICTOR YOUNG (217) 557-7897

CONTRACT NO. 72C90



PART "A"

GROSS LENGTH = 27,389.61 FT = 5.187 MILES  
 NET LENGTH = 27,389.61 FT = 5.187 MILES

PART "B"

GROSS LENGTH = 17,889.02 FT = 3.388 MILES  
 NET LENGTH CH 12 (MECHANICSBURG RD.) = 16,300.00 FT = 0.309 MILES  
 NET LENGTH TR 420 (OVERPASS RD.) = 1,589.02 FT = 0.0301 MILES