

F.A.I. RTE.	SECTION	COUNTY	TOTAL SHEETS	SHEET NO.
55	D6 PATCH MONT. CO. 2014	MONTGOMERY	6	1
ILLINOIS			CONTRACT: 72G28	

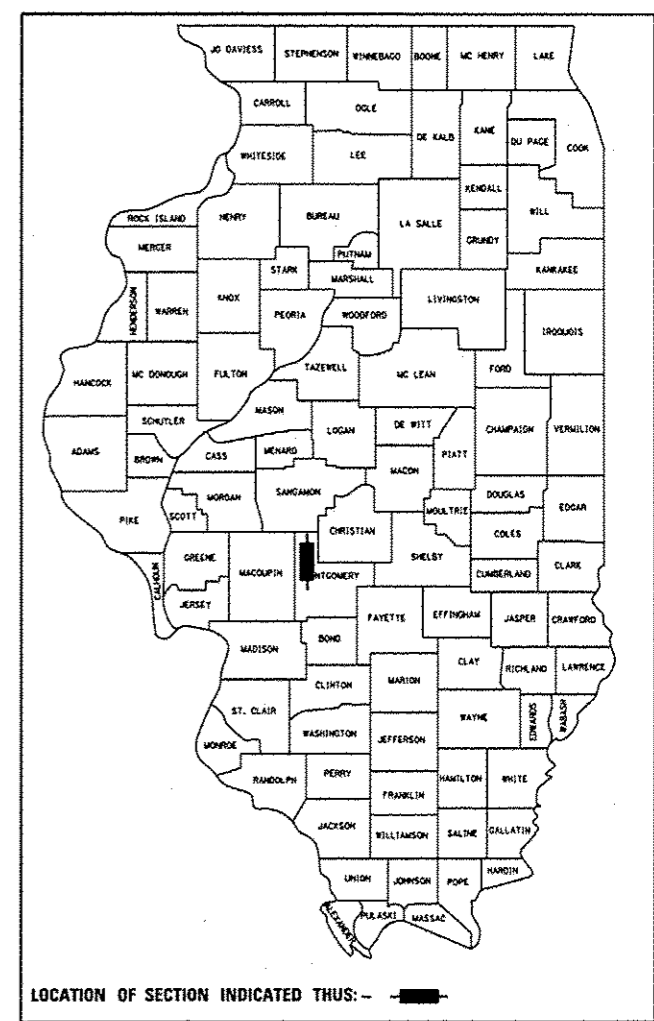
STATE OF ILLINOIS
DEPARTMENT OF TRANSPORTATION
DIVISION OF HIGHWAYS

**PROPOSED
CONTRACT MAINTENANCE**

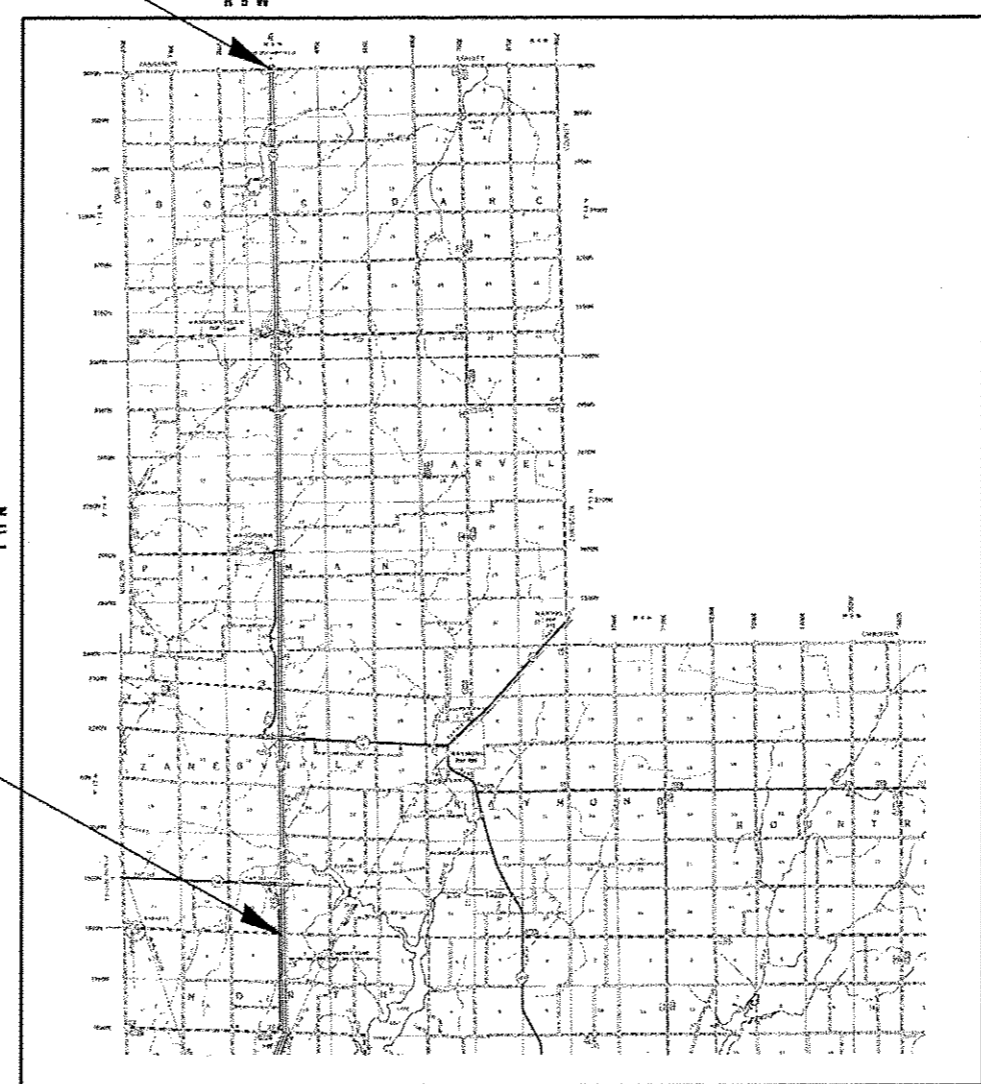
FAI 55 (I-55)
SECTION D6 PATCHING MONT. CO. 2014
PROJECT PAVEMENT PATCHING
TYPE of IMPROVEMENT
MONTGOMERY COUNTY

FOR INDEX OF SHEETS, SEE SHEET NO. 2

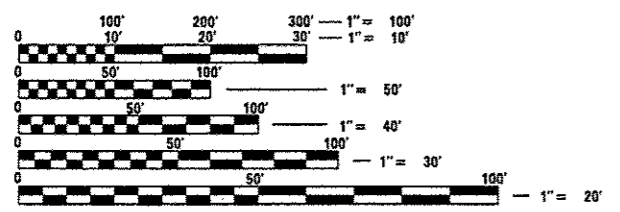
D-96-064-13



END PROJECT C-96-064-13



ADT: 16,600 (2011)
HCV: 1,775
SU: 375700
MU: 1,400



FULL SIZE PLANS HAVE BEEN PREPARED USING STANDARD ENGINEERING SCALES. REDUCED SIZED PLANS WILL NOT CONFORM TO STANDARD SCALES. IN MAKING MEASUREMENTS ON REDUCED PLANS, THE ABOVE SCALES MAY BE USED.

J.U.L.I.E.
JOINT UTILITY LOCATION INFORMATION FOR EXCAVATION
1-800-892-0123
OR 811

PLAN AND CONTRACT TECHNICIAN
TIMOTHY SHARP (217) 782-7743

CONTRACT NO. 72G28

STATE OF ILLINOIS
DEPARTMENT OF TRANSPORTATION
DIVISION OF HIGHWAYS

SUBMITTED Aug 28 2013
Reza Z. Pinsky
DEPUTY DIRECTOR OF HIGHWAYS, REGION ENGINEER

October 4 2013
John D. Baranzoni, PE
acting ENGINEER OF DESIGN AND ENVIRONMENT

October 4 2013
Omer Osman, PE
DIRECTOR OF HIGHWAYS, CHIEF ENGINEER

PRINTED BY THE AUTHORITY
OF THE STATE OF ILLINOIS