

STATE OF ILLINOIS
 DEPARTMENT OF TRANSPORTATION
 DIVISION OF HIGHWAYS

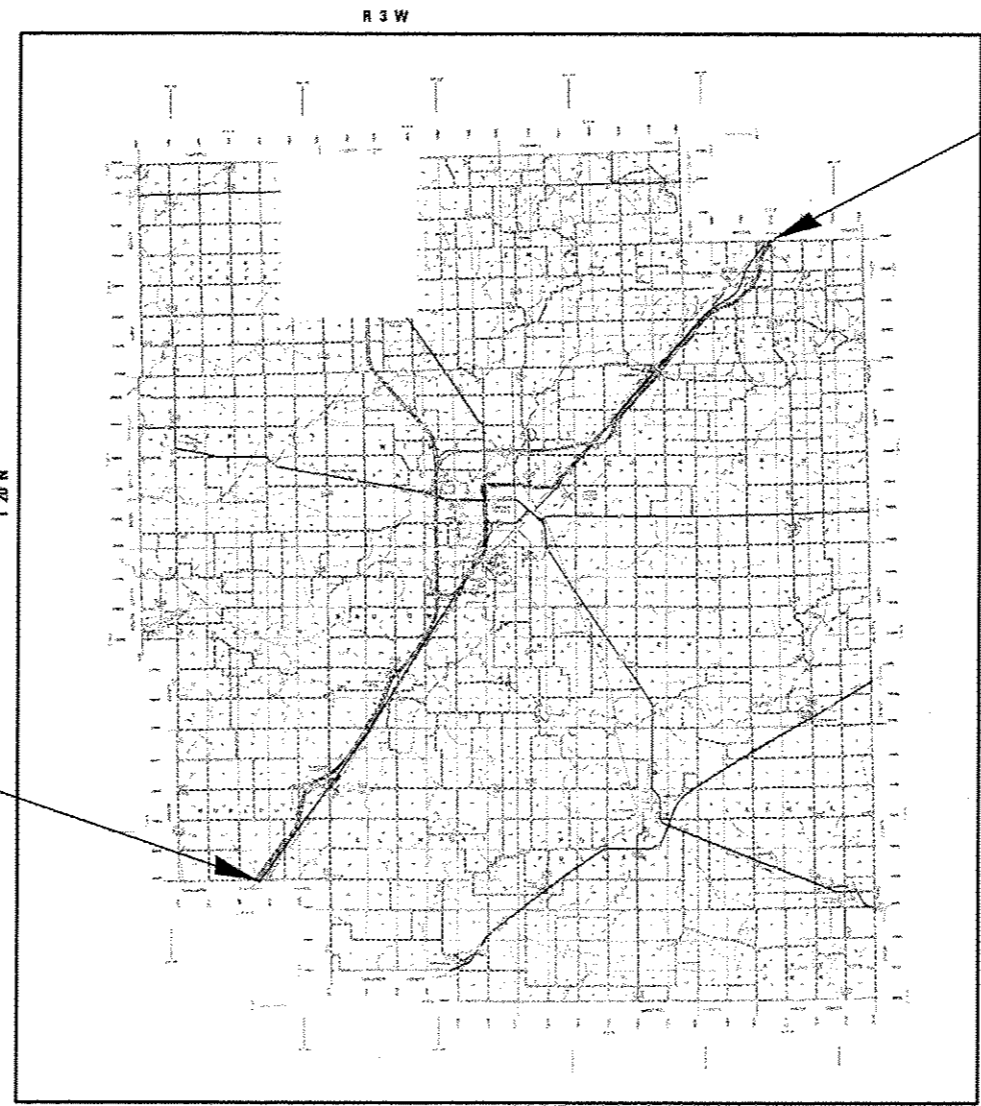
**PROPOSED
 CONTRACT MAINTENANCE**

FAI 55 (I-55)
 SECTION D6 PATCHING LOGAN CO. 2014
 PROJECT PAVEMENT PATCHING
 TYPE of IMPROVEMENT
 LOGAN COUNTY

C-96-065-13

FOR INDEX OF SHEETS, SEE SHEET NO. 2

F.A.I. RTE.	SECTION	COUNTY	TOTAL SHEETS	SHEET NO.
55	D6 PATCH LOGAN CO. 2014	LOGAN	6	1
ILLINOIS			CONTRACT: 72G29	

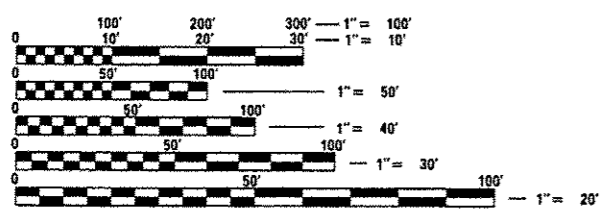


END PROJECT



BEGIN PROJECT

ADT: 15,700 (2011)
 HCV: 3,950
 SU: 460
 MU: 3,500



FULL SIZE PLANS HAVE BEEN PREPARED USING STANDARD ENGINEERING SCALES. REDUCED SIZED PLANS WILL NOT CONFORM TO STANDARD SCALES. IN MAKING MEASUREMENTS ON REDUCED PLANS, THE ABOVE SCALES MAY BE USED.

J.U.L.I.E.
 JOINT UTILITY LOCATION INFORMATION FOR EXCAVATION
 1-800-892-0123
 OR 811

PLAN AND CONTRACT TECHNICIAN
 TIMOTHY SHARP (217) 782-7743

CONTRACT NO. 72G29

STATE OF ILLINOIS
 DEPARTMENT OF TRANSPORTATION
 DIVISION OF HIGHWAYS

SUBMITTED August 23 2013
Rep. Z. Smith
 DEPUTY DIRECTOR OF HIGHWAYS, REGION ENGINEER

October 4 2013
John D. Baranzello, P.E.
 acting ENGINEER OF DESIGN AND ENVIRONMENT

October 4 2013
Omer Osman, P.E.
 DIRECTOR OF HIGHWAYS, CMEF ENGINEER

PRINTED BY THE AUTHORITY
 OF THE STATE OF ILLINOIS