

11-08-13 LETTING ITEM 047

STATE OF ILLINOIS  
DEPARTMENT OF TRANSPORTATION  
DIVISION OF HIGHWAYS  
**PROPOSED  
CONTRACT MAINTENANCE**

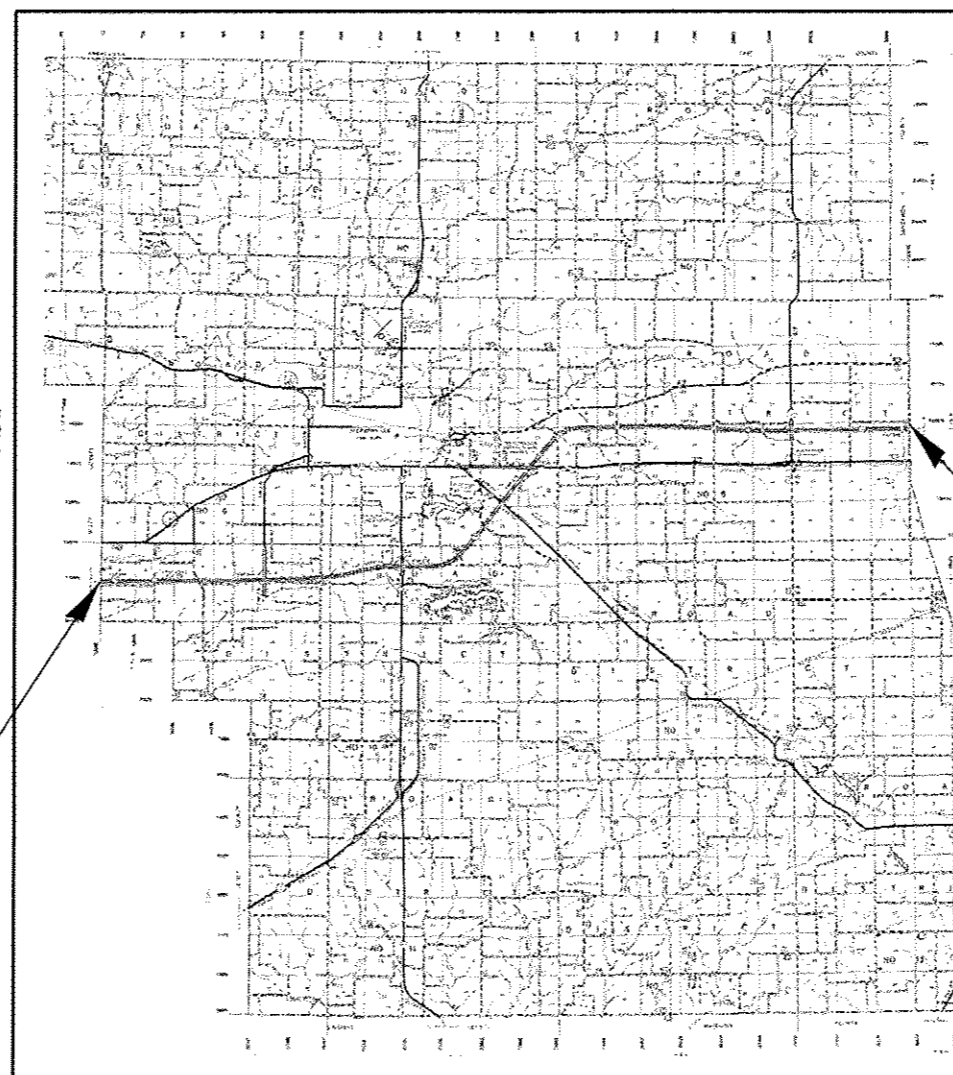
FOR INDEX OF SHEETS, SEE SHEET NO. 2

FAI 72 (I-72)  
SECTION D6 PATCHING MORGAN CO. 2014  
PROJECT PAVEMENT PATCHING  
TYPE of IMPROVEMENT  
MORGAN COUNTY

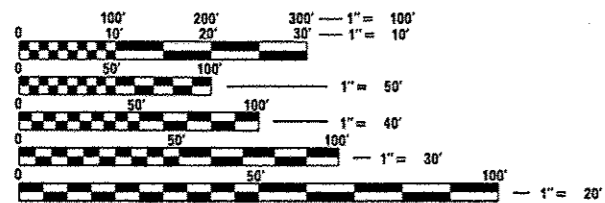
C-96-068-13

F.A.I. RTE.	SECTION	COUNTY	TOTAL SHEETS	SHEET NO.
72	D6 PATCH MORGAN CO. 2014	MORGAN	6	1
		ILLINOIS	CONTRACT: 72G32	

D-96-068-13



ADT: 6,100 (2011)  
HCV: 1,175  
SU: 225  
MU: 950



FULL SIZE PLANS HAVE BEEN PREPARED USING STANDARD ENGINEERING SCALES. REDUCED SIZED PLANS WILL NOT CONFORM TO STANDARD SCALES. IN MAKING MEASUREMENTS ON REDUCED PLANS, THE ABOVE SCALES MAY BE USED.

J.U.L.I.E.  
JOINT UTILITY LOCATION INFORMATION FOR EXCAVATION  
1-800-892-0123  
OR 811

PLAN AND CONTRACT TECHNICIAN  
TIMOTHY SHARP (217) 782-7743

CONTRACT NO. 72G32

END PROJECT

BEGIN PROJECT

STATE OF ILLINOIS  
DEPARTMENT OF TRANSPORTATION  
DIVISION OF HIGHWAYS

SUBMITTED August 25, 2013  
Reza Z. Ansari  
DEPUTY DIRECTOR OF HIGHWAYS, REGION ENGINEER

October 4, 2013  
John D. Baranzella, P.E. /s/  
ACTING ENGINEER OF DESIGN AND ENVIRONMENT

October 4, 2013  
Omer Osman, P.E. /s/  
DIRECTOR OF HIGHWAYS, CHIEF ENGINEER

PRINTED BY THE AUTHORITY  
OF THE STATE OF ILLINOIS

**INDEX**

SHEET NO.	DESCRIPTION
1.	COVER SHEET
2.	INDEX, STANDARDS, SIGNATURES
3.	SUMMARY OF QUANTITIES
4.	SCHEDULES
5.	LOCATION MAP
6.	TYPICAL SECTIONS

**STANDARDS**

STANDARD NO.	DESCRIPTION
442001-04	CLASS A PATCHES
701101-03	OFF-RD OPERATIONS, MULTILANE, 15' TO 24" FROM PAVEMENT EDGE
701106-02	OFF-RD OPERATIONS, MULTILANE, MORE THAN 15' AWAY
701400-06	APPROACH TO LANE CLOSURE, FREEWAY/EXPRESSWAY
701401-07	LANE CLOSURE, FREEWAY/EXPRESSWAY
701411-08	LANE CLOSURE, MULTILANE, AT ENTRANCE OR EXIP RAMP, FOR SPEEDS >45 MPH
701446-04	TWO LANE CLOSURE FREEWAY/EXPRESSWAY
701901-02	TRAFFIC CONTROL DEVICES

**STATE OF ILLINOIS  
DEPARTMENT OF TRANSPORTATION  
DIVISION OF HIGHWAYS  
DISTRICT 6**

---

EXAMINED August 22 20 13  
*Bill M. B...*  
 ENGINEER OF OPERATIONS

---

EXAMINED AUGUST 16 20 13  
*Jimmy J. L...*  
 ENGINEER OF PROJECT IMPLEMENTATION

---

EXAMINED AUGUST 16 20 13  
*Laura R. Macrih*  
 ENGINEER OF PROGRAM DEVELOPMENT

				CONSTR. CODE	
				100% STATE	
CODE NO.	ITEM	UNIT	TOTAL QUANTITY	ROADWAY	
				0005	
				S. N.	
44200577	CLASS A PATCHES, TYPE II, 12 INCH	SQ YD	277.5	277.5	
44200581	CLASS A PATCHES, TYPE III, 12 INCH	SQ YD	64	64	
44200583	CLASS A PATCHES, TYPE IV, 12 INCH	SQ YD	93.4	93.4	
44213000	PATCHING REINFORCEMENT	SQ YD	434.7	434.7	
44213200	SAW CUTS	FOOT	2,476	2,476	
44213204	TIE BARS 3/4"	EACH	16	16	
67100100	MOBILIZATION	L SUM	1	1	
70100420	TRAFFIC CONTROL AND PROTECTION, STANDARD 701411	EACH	10	10	
70100800	TRAFFIC CONTROL AND PROTECTION, STANDARD 701401	L SUM	1	1	
70100815	TRAFFIC CONTROL AND PROTECTION, STANDARD 701446	L SUM	1	1	
70106800	CHANGEABLE MESSAGE SIGN	CAL MO	2	2	
70200100	NIGHTTIME WORK ZONE LIGHTING	L SUM	1	1	
X4820110	HOT-MIX ASPHALT SHOULDER REMOVAL AND REPLACEMENT (SPECIAL)	SQ YD	150	150	

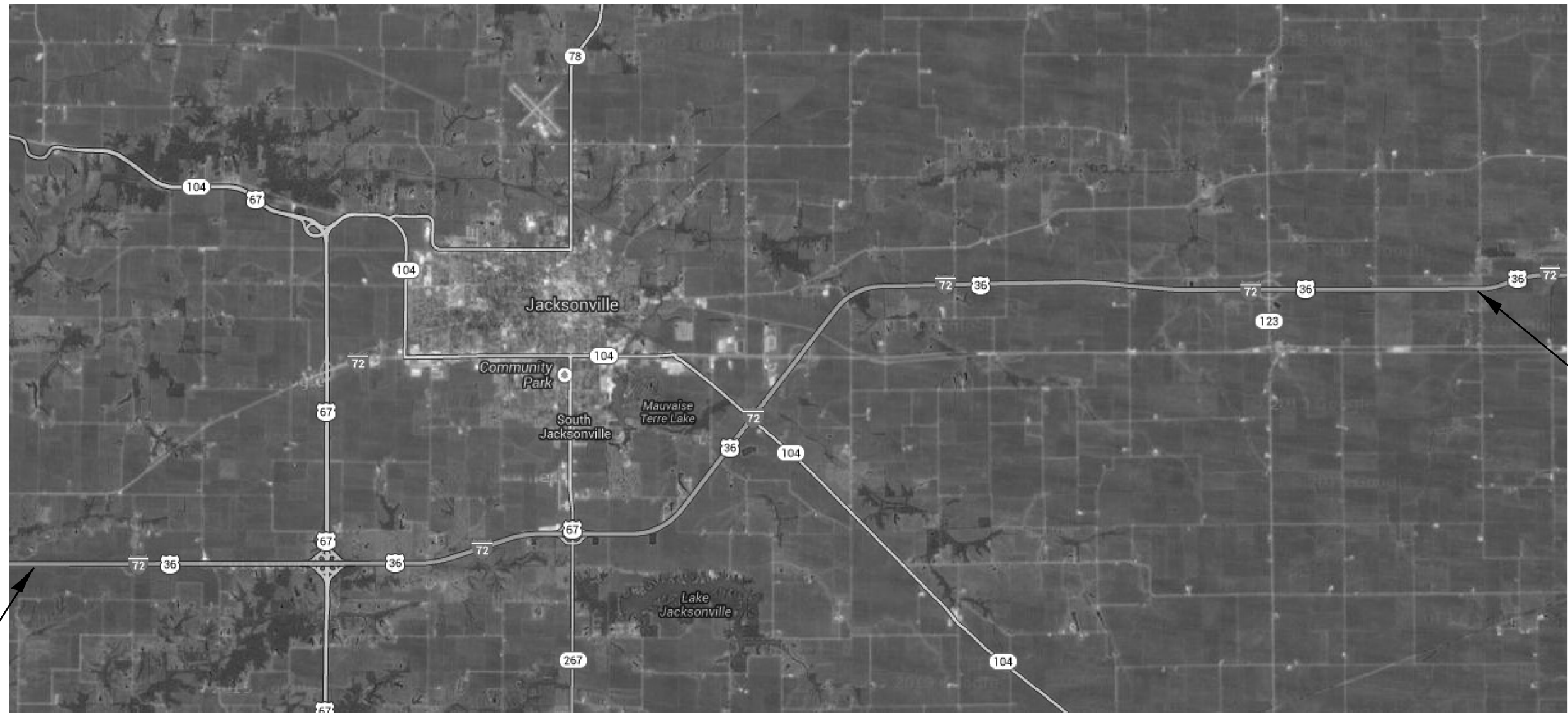
### PATCHING SCHEDULE

LOCATION	CLASS A PATCHES					CLASS A PATCHES			SAW	TIE	PATCH
	LENGTH (FT)	WIDTH	SQ YD	12 IN	12 IN	12 IN	CUTS	BARS	REINF		
				TY II	TY III	TY IV				FOOT	EACH
WESTBOUND I-72	PASS.	CENT.	DRIV.								
STA 195+00			30.0	12.0	40.0			40.0	108.0	16.0	
STA 186+22			20.0	12.0	26.7			26.7	88.0	26.7	
STA 182+50			8.0	12.0	10.7	10.7			64.0	10.7	
STA 181+67			6.0	12.0	8.0	8.0			60.0	8.0	
STA 20+04			8.0	12.0	10.7	10.7			64.0	10.7	
STA 275+45			10.0	12.0	13.3	13.3			68.0	13.3	
STA 258+80			6.0	12.0	8.0	8.0			60.0	8.0	
STA 256+37			8.0	12.0	10.7	10.7			64.0	10.7	
STA 253+22			6.0	12.0	8.0	8.0			60.0	8.0	
STA 246+25			8.0	12.0	10.7	10.7			64.0	10.7	
STA 230+54			6.0	12.0	8.0	8.0			60.0	8.0	
STA 222+45			6.0	12.0	8.0	8.0			60.0	8.0	
STA 214+64			6.0	12.0	8.0	8.0			60.0	8.0	
STA 195+10			8.0	12.0	10.7	10.7			64.0	10.7	
STA 160+05			6.0	12.0	8.0	8.0			60.0	8.0	
STA 1026+30			8.0	12.0	10.7	10.7			64.0	10.7	
STA 192+50			12.0	12.0	16.0		16.0		72.0	16.0	
STA 29+55		6.0		12.0	8.0	8.0			60.0	8.0	
STA 407+05			6.0	12.0	8.0	8.0			60.0	8.0	
<b>W.B. TOTALS</b>					232.0	149.5	16.0	66.7	1260.0	16.0	232.0
EASTBOUND I-72											
STA 190+80			12.0	12.0	16.0		16.0		72.0		16.0
STA 190+80	12.0			12.0	16.0		16.0		72.0		16.0
STA 190+30			6.0	12.0	8.0	8.0			60.0		8.0
STA 1223+11			6.0	12.0	8.0	8.0			60.0		8.0
STA 89+95			6.0	12.0	8.0	8.0			60.0		8.0
STA 93+56			6.0	12.0	8.0	8.0			60.0		8.0
STA 118+26			12.0	12.0	16.0		16.0		72.0		16.0
STA 118+66			8.0	12.0	10.7	10.7			64.0		10.7
STA 120+30			10.0	12.0	13.3	13.3			68.0		13.3
STA 120+65		6.0		12.0	8.0	8.0			60.0		8.0
STA 147+80			6.0	12.0	8.0	8.0			60.0		8.0
STA 178+76			6.0	12.0	8.0	8.0			60.0		8.0
STA 178+76	6.0			12.0	8.0	8.0			60.0		8.0
STA 204+22			6.0	12.0	8.0	8.0			60.0		8.0
STA 219+70			6.0	12.0	8.0	8.0			60.0		8.0
STA 219+40	20.0			12.0	26.7			26.7	88.0		26.7
STA 329+50			6.0	12.0	8.0	8.0			60.0		8.0
STA 372+45			6.0	12.0	8.0	8.0			60.0		8.0
STA 378+94			6.0	12.0	8.0	8.0			60.0		8.0
<b>W.B. TOTALS</b>					202.7	128.0	48.0	26.7	1216.0	0.0	202.7
<b>TOTALS</b>	38.0	12.0	276.0		434.7	277.5	64.0	93.4	2476.0	16.0	434.7

### MIXTURE REQUIREMENTS

THE FOLLOWING MIXTURE REQUIREMENTS  
ARE APPLICABLE FOR THIS PROJECT

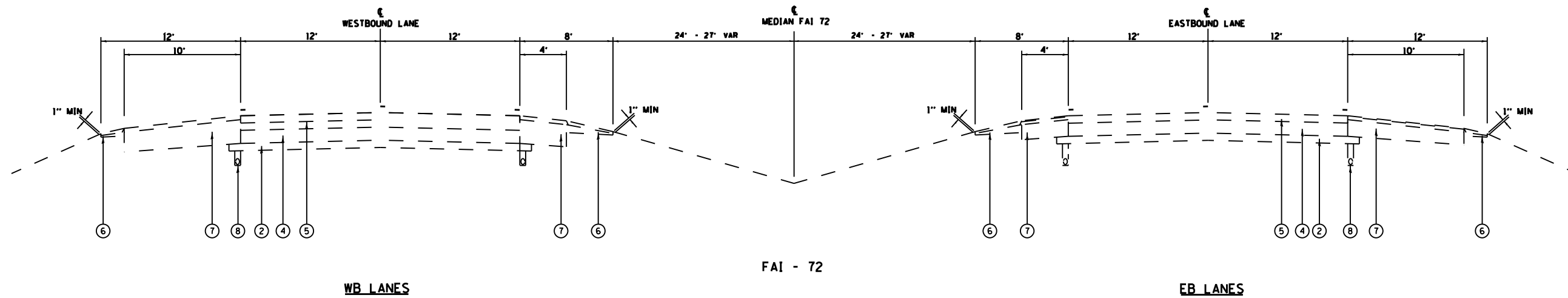
MIXTURE USE(S)	H.M.A. SHOULDER REM & REPL SURF	H.M.A. SHOULDER REM & REPL LOWER LIFTS
AC/PG	PG 64-22	PG 64-22
DESIGN AIR VOIDS	4.0% @ N DESIGN = 50	4.0% @ N DESIGN = 50
MIXTURE COMP	IL 9.5	IL 19.0
FRICITION AGG	MIX "C"	N/A



BEGIN PROJECT

END PROJECT

FILE NAME : *FILEL*	USER NAME : *USER*	DESIGNED - _____	REVISED - _____	<b>STATE OF ILLINOIS DEPARTMENT OF TRANSPORTATION</b>	<b>PROJECT LOCATION</b>				F.A.I. RTE.	SECTION	COUNTY	TOTAL SHEETS	SHEET NO.
	PLOT SCALE : *SCALE*	DRAWN - DMS	REVISED - _____		72	D6 PATCH	MORGAN CO. 2014	MORGAN	6	5			
*MODELNAME*	PLOT DATE : *DATE*	CHECKED - _____	REVISED - _____		SCALE: _____ SHEET _____ OF _____ SHEETS STA. _____ TO STA. _____				CONTRACT NO. 72G32				
	DATE - 5-21-2013	DATE - _____	REVISED - _____		ILLINOIS FED. AID PROJECT								



**LEGEND**

- ① EX STABILIZED SUB-BASE 4"
- ② EX AGGREGATE SUB-BASE 4"
- ③ EX RCPC PAVEMENT 8"
- ④ EX CRPC PAVEMENT
- ⑤ EX HOT-MIX ASPHALT SURFACE COURSE (VARIABLE THICKNESS)
- ⑥ EX AGGREGATE SHOULDERS
- ⑦ EX HOT-MIX ASPHALT SHOULDERS
- ⑧ EX PIPE UNDERDRAIN

FILE NAME :	USER NAME : #USER#	DESIGNED - _____	REVISED - _____	<b>STATE OF ILLINOIS DEPARTMENT OF TRANSPORTATION</b>	<b>TYPICALS</b>		F.A.I. RTE.	SECTION	COUNTY	TOTAL SHEETS	SHEET NO.
#FILE#	PLOT SCALE : #SCALE#	DRAWN - _____	REVISED - _____				72	D6 PATCH MORGAN CO. 2014	MORGAN	6	6
#MODELNAME#	PLOT DATE : #DATE#	CHECKED - _____	REVISED - _____		SCALE: _____ SHEET _____ OF _____ SHEETS STA. _____ TO STA. _____		ILLINOIS FED. AID PROJECT		CONTRACT NO. 72G32		
		DATE - _____	REVISED - _____								