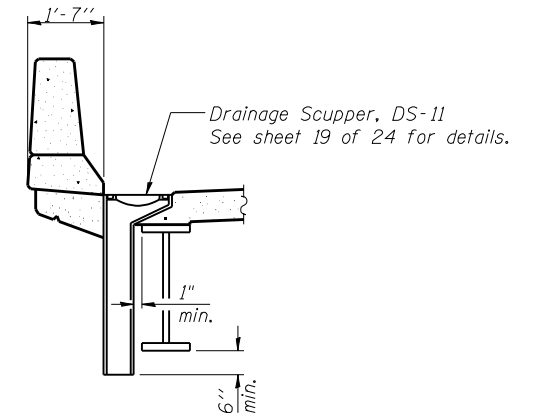


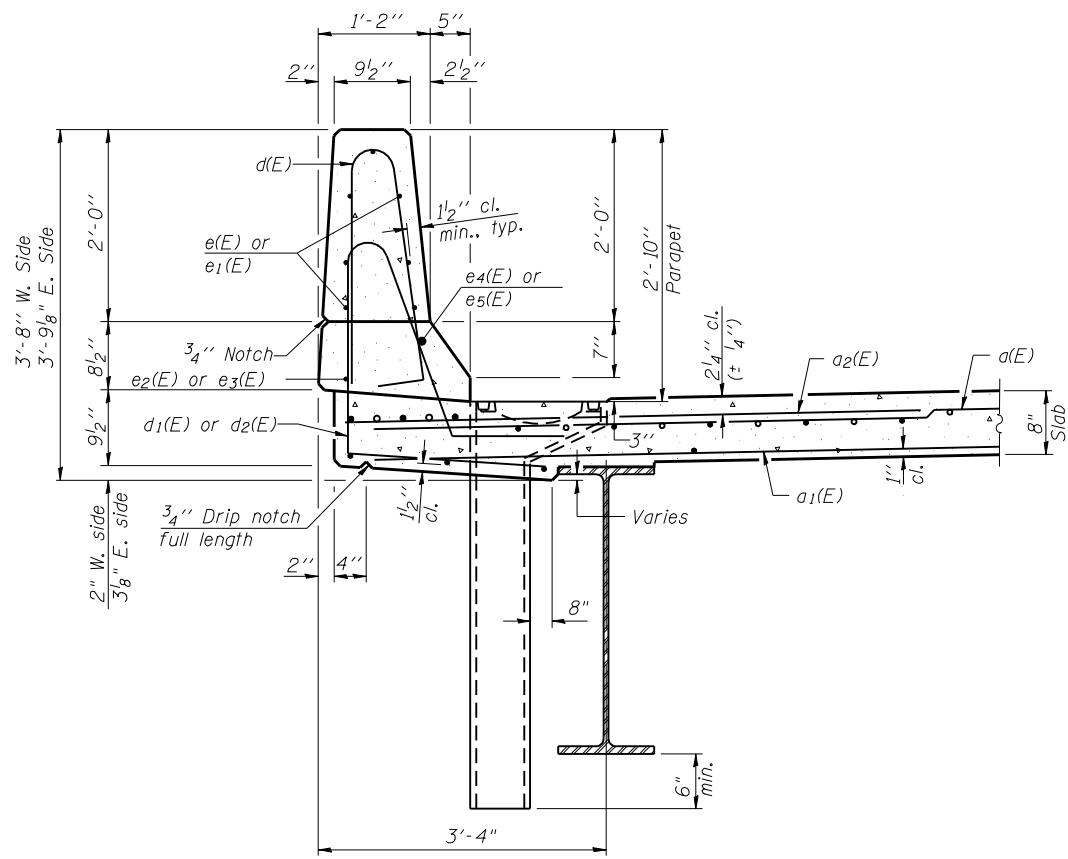
INSIDE ELEVATION OF PARAPET

MINIMUM BAR LAP

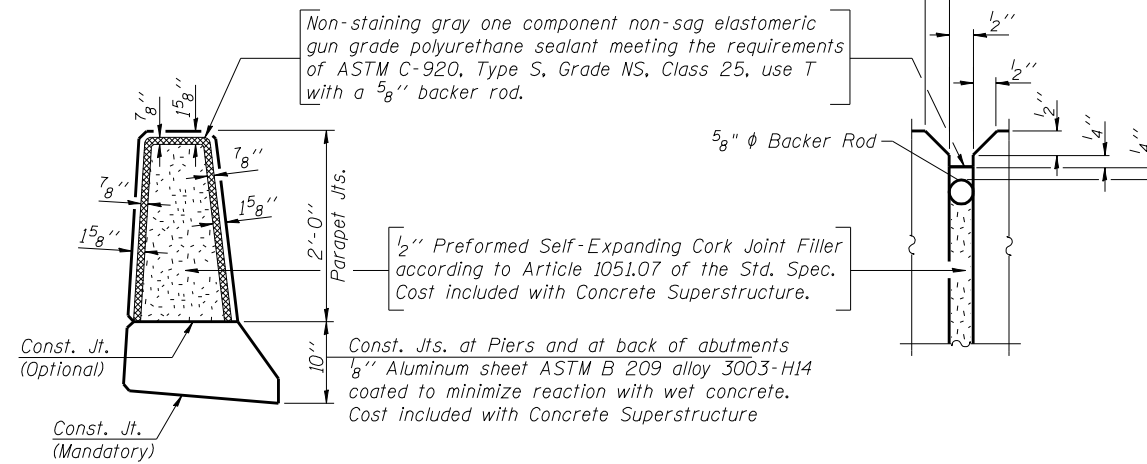
(Parapet)
#4 bar = 2'-0"



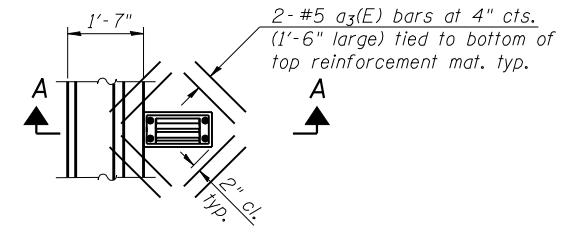
SECTION A-A



SECTION THRU PARAPET
West parapet shown



PARAPET JOINT DETAILS



PLAN DETAIL AT SCUPPER

Notes:
Cut longitudinal reinforcement to clear drainage scuppers.
Bars indicated thus 1x2-#4 etc. indicates 1 line of bars with 2 lengths per line.
See Sheet 9 of 24 for bar details and Bill of Material.

FILE NAME = 74217-093-structure-details.dgn
C:\Users\74217-093\Documents\74217-093-structure-details.dgn
CB PROJECT NO. 00853-3

Coombe-Bloxdorf P.C.
- CIVIL ENGINEERS -
- STRUCTURAL ENGINEERS -
- LAND SURVEYORS -
Design Firm License No. 184-002703

USER NAME = .CFC.	DESIGNED - GB/MCB	REVISED -
PLOT SCALE = 0:2.000000 '1' / IN.	CHECKED - MCB	REVISED -
PLOT DATE = 7/23/2013	DRAWN - TFG	REVISED -
	CHECKED - MCB	REVISED -

STATE OF ILLINOIS
DEPARTMENT OF TRANSPORTATION

SUPERSTRUCTURE DETAILS
STRUCTURE NO. 093-0024

SHEET NO. 8 OF 24 SHEETS

F.A. RTE.	SECTION	COUNTY	TOTAL SHEETS	SHEET NO.
1B	(12A)B-1	WABASH	52	30
CONTRACT NO. 74217				

ILLINOIS FED. AID PROJECT