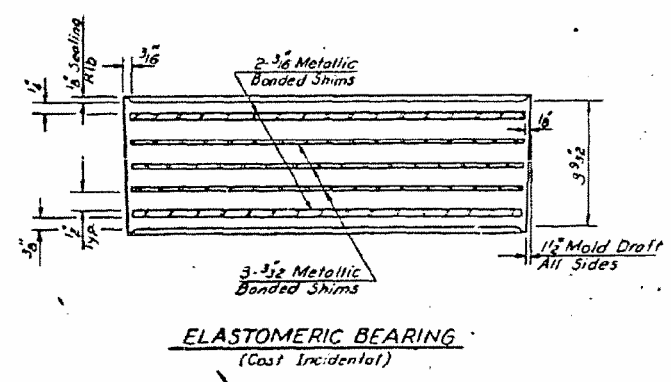
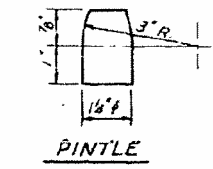
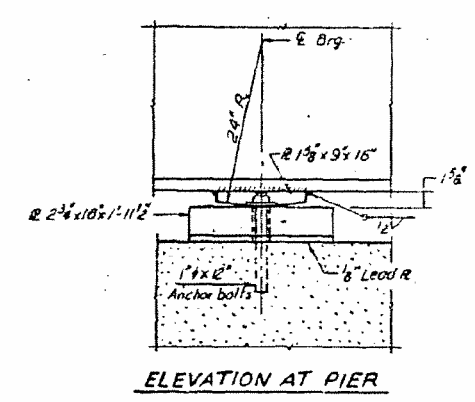
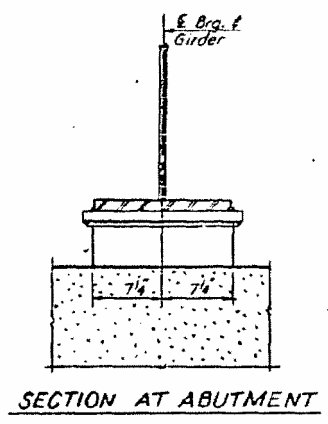
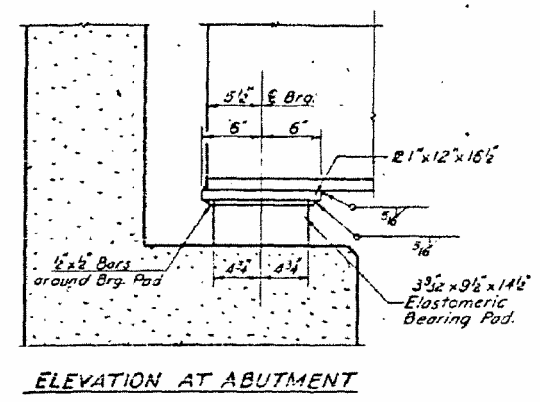


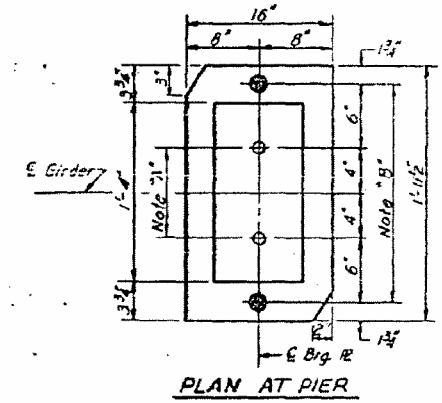
STATE OF ILLINOIS
DEPARTMENT OF TRANSPORTATION

PROJECT NO.	SECTION	COUNTY	TOTAL SHEETS	SHEET NO.
17	118-1	SHELBY	80	43
SHEET NO. 17 25 SHEETS				



Note "A"
1 1/2" Holes - 1" deep in top R for 1 1/2" Pintles. Thread or press fit pintles in bottom R.

Note "B"
1 1/2" Holes for 1" Anchor Bolts - 2 1/2" x 2 1/2" x 5/8" Washers under nut.



Note
All Bearing Pintles shall be A.S.T.M. A-508 steel.

TOP OF WEB ELEVATIONS

Girders	1	2	3	4	5	6	7	8	9	10	11	12
Locations												
E Brg. W. Abutment	561.251	561.478	561.708	561.942	562.179	562.420	562.542	562.799	563.039	563.292	563.548	563.808
E Splice #1	560.627	560.913	561.130	561.345	561.561	561.778	561.884	562.097	562.314	562.529	562.744	562.959
E Brg. Pier	560.425	560.641	560.858	561.074	561.290	561.506	561.614	561.829	562.045	562.260	562.475	562.690
E Splice #2	560.341	560.558	560.775	560.991	561.207	561.424	561.532	561.748	561.964	562.179	562.395	562.610
E Brg. E. Abutment	559.820	560.238	560.256	560.474	560.691	560.909	561.018	561.235	561.452	561.669	561.885	562.103

DESIGNED Svech Desai
CHECKED J. P. Vece
DRAWN R. P. Sumner
CHECKED J. P.

EXAMINED [Signature]
PASSED
APPROVED

OCT 19 1972

BEARING DETAILS
F.A. RT. 17 SEC. 118-1
SHELBY COUNTY
STATION 108+77.95