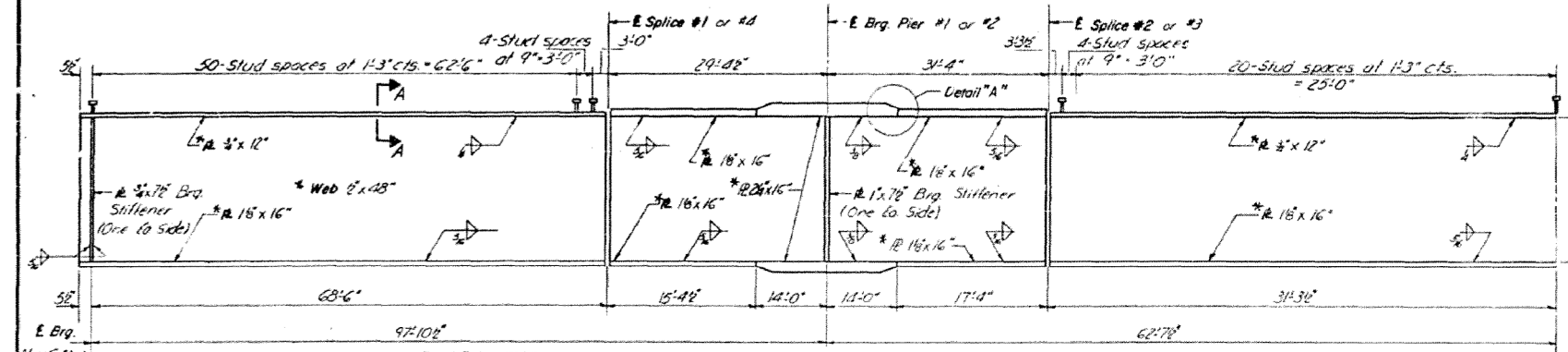
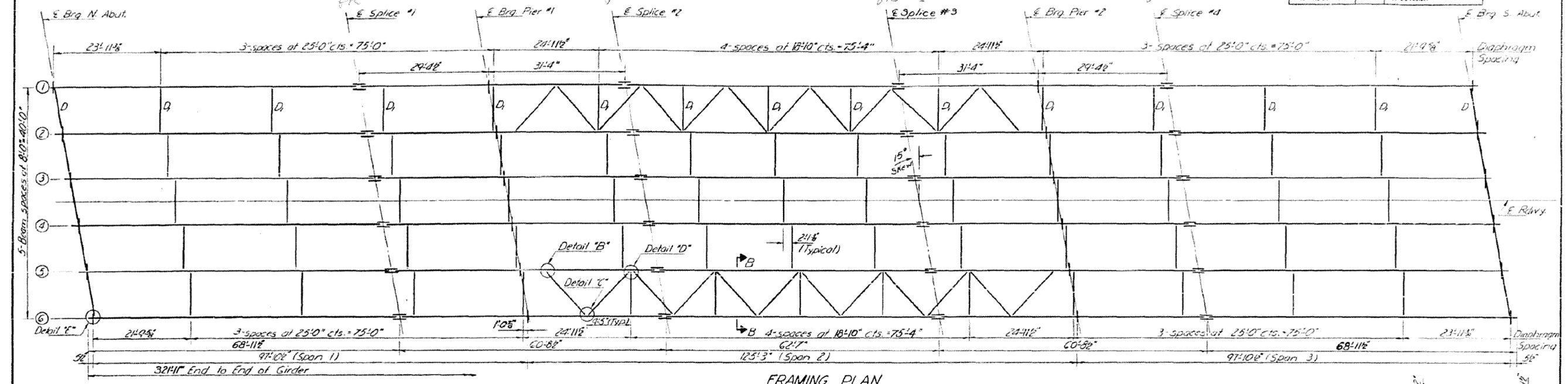


IF HEADERS ARE TO BE IN THEN START NEW POUR AT OPPOSITE END AND PIER JOINT.

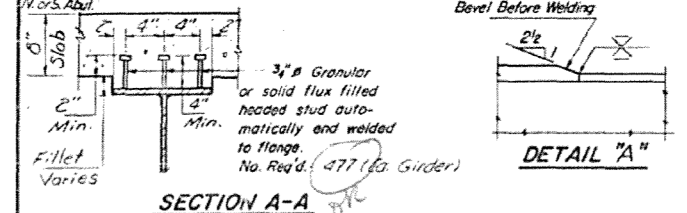
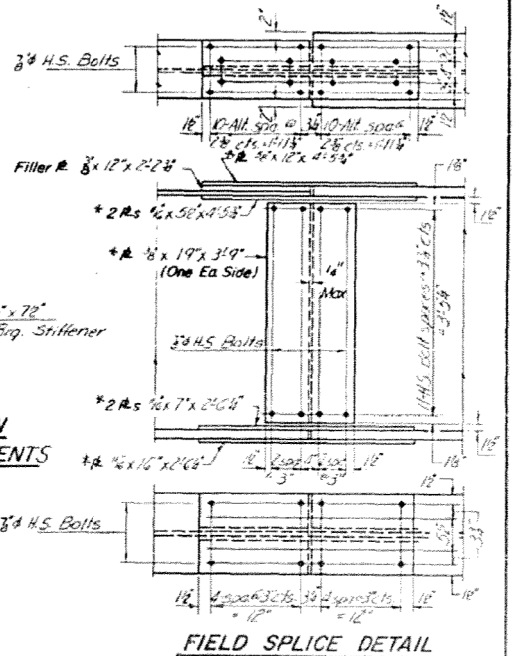
STATE OF ILLINOIS
DEPARTMENT OF TRANSPORTATION

| | | | | | |
|-------------|---------|--------|------|-----------|---------------------|
| PROJECT NO. | SECTION | BRIDGE | SPAN | SHEET NO. | SHEET NO. OF SHEETS |
| 128 | 101 BR | SHELBY | 2.8 | 14 | 15 SHEETS |



SECTION AT PIERS

SECTION AT ABUTMENTS



* Indicates Notch Toughness requirements are applicable. See General Notes.

Note: Work this sheet with sheets #8 & #9

| | | | |
|----------|---------------|----------|-------------|
| DESIGNED | Stefan P. Lem | EXAMINED | [Signature] |
| CHECKED | B. S. Shaker | PASSED | [Signature] |
| DRAWN | R. D. Dwy | APPROVED | [Signature] |
| CHECKED | S. L. G. | | |

DATE: 3-29-71

STRUCTURAL STEEL
S.B.I. RT. 128 SEC. 101 BR
SHELBY COUNTY
STA. 102+75.00