

STATE OF ILLINOIS  
DEPARTMENT OF TRANSPORTATION  
DIVISION OF HIGHWAYS

**PROPOSED  
HIGHWAY PLANS**

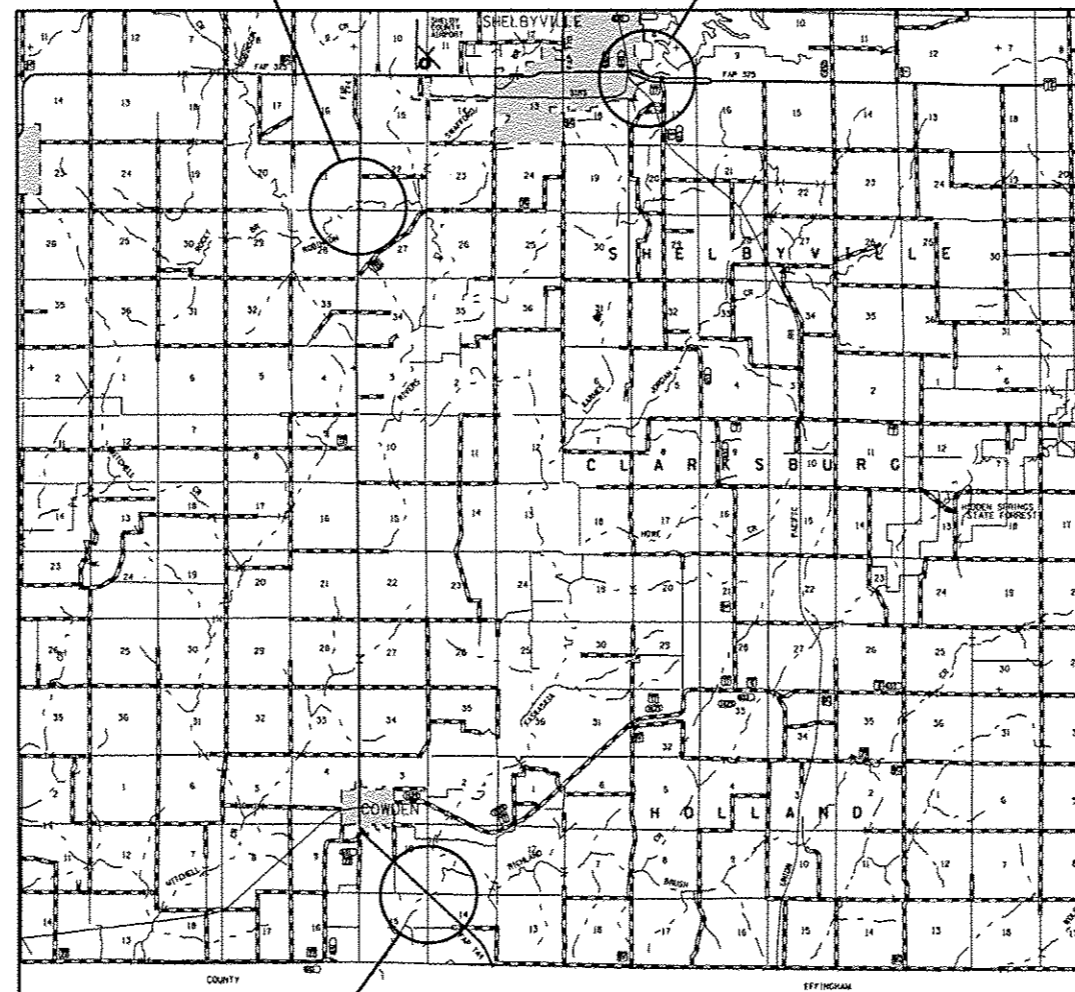
F.A.P. ROUTES 325 & 774 (IL. RTE 16 & IL. RTE. 128)  
SECTION D7 BRIDGE PAINTING 2014-2

BRIDGE PAINTING  
SHELBY COUNTY

C-97-066-13

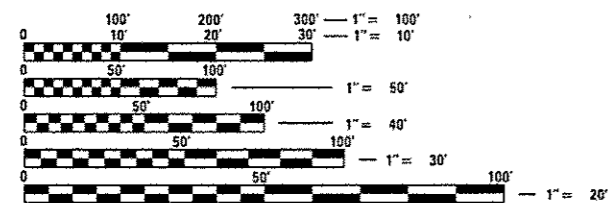
LOCATION 2  
S.N. 087-0022

LOCATION 1  
S.N. 087-0020



LOCATION 3  
S.N. 087-0023

FOR INDEX OF SHEETS, SEE SHEET NO. 2



FULL SIZE PLANS HAVE BEEN PREPARED USING STANDARD ENGINEERING SCALES. REDUCED SIZED PLANS WILL NOT CONFORM TO STANDARD SCALES. IN MAKING MEASUREMENTS ON REDUCED PLANS, THE ABOVE SCALES MAY BE USED.

J.U.L.I.E.  
JOINT UTILITY LOCATION INFORMATION FOR EXCAVATION  
1-800-892-0123  
OR 811

PROJECT ENGINEER: TOM RONAN  
PROJECT MANAGER: TOM RONAN  
PHONE: (217)-342-8320  
CONTRACT NO. 74620

F.A.P. RTE.	SECTION	COUNTY	TOTAL SHEETS	SHEET NO.
774	*	SHELBY	18	1
		ILLINOIS	CONTRACT NO. 74620	
		* D7 BRIDGE PAINTING 2014-2		* 18 x 2 = 20

D-97-020-13



STATE OF ILLINOIS  
DEPARTMENT OF TRANSPORTATION  
DIVISION OF HIGHWAYS

SUBMITTED Aug 08 20 13

Roger L. Drishell, P.E.  
DEPUTY DIRECTOR OF HIGHWAYS, REGION ENGINEER

October 4 20 13  
John D. Baranzelli, P.E.  
ENGINEER OF DESIGN AND ENVIRONMENT

October 4 20 13  
Omer Osman, P.E.  
DIRECTOR OF HIGHWAYS, CHIEF ENGINEER

PRINTED BY THE AUTHORITY  
OF THE STATE OF ILLINOIS