

**ELEVATION TOP OF WEB W.B. LANES \***

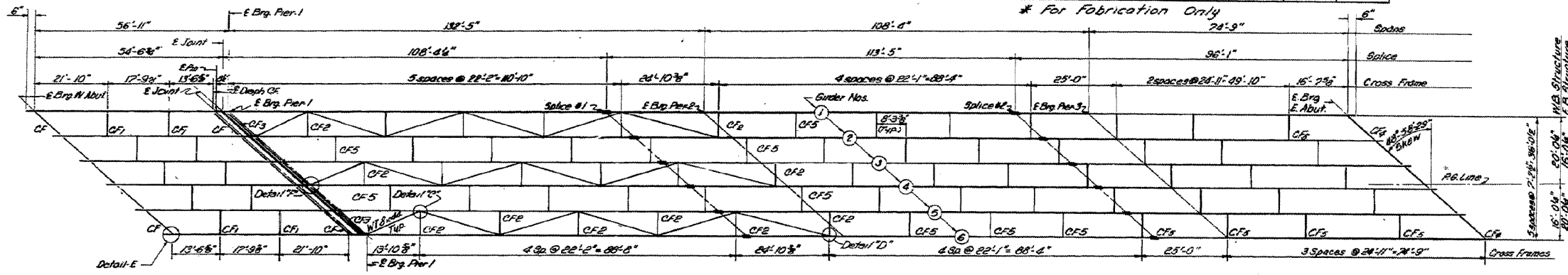
Girder	W. Abut.	Pin	E. Pier-1	Splice-1	E. Pier-2	Splice-2	E. Pier-3	E. Abut.
1	709.33	709.05	709.85	709.90	709.97	710.57	710.68	711.01
2	709.58	709.12	709.18	710.11	710.18	710.76	710.87	711.18
3	709.70	709.32	709.38	710.29	710.35	710.92	711.02	711.32
4	709.84	709.47	709.53	710.41	710.47	711.02	711.12	711.40
5	709.92	709.45	709.49	710.36	710.41	710.94	711.04	711.31
6	709.97	709.36	709.44	710.28	710.33	710.84	710.93	711.19

STATE OF ILLINOIS

**ELEVATION TOP OF WEB E.B. LANES \***

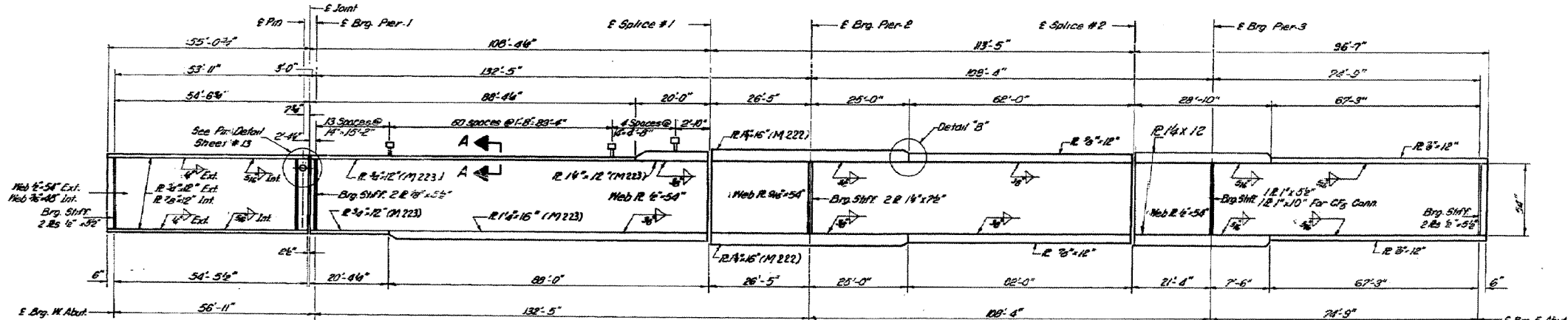
Girder	W. Abut.	Pin	E. Pier-1	Splice-1	E. Pier-2	Splice-2	E. Pier-3	E. Abut.
1	709.74	710.13	710.18	710.81	710.80	711.12	711.17	711.27
2	709.95	710.32	710.38	710.98	710.96	711.27	711.32	711.40
3	710.13	710.50	710.55	711.18	711.17	711.40	711.44	711.51
4	710.13	710.49	710.54	711.10	711.07	711.35	711.39	711.44
5	710.28	710.42	710.47	711.01	710.98	711.24	711.28	711.32
6	709.99	710.33	710.37	710.90	710.86	711.10	711.13	711.15

ROUTE NO.	SECTION	COUNTY	TOTAL SHEETS	SHEET NO.	SHEET NO. OF
S.A.I. 72	58-66	MACON	44	16	SHEETS 25
F.A.I. 72	HVB				
FED. ROAD DIST. NO. 7	ILLINOIS	FED. AID PROJECT			

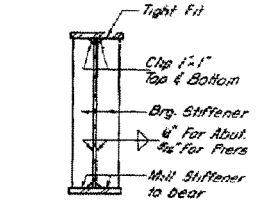


FRAMING PLAN

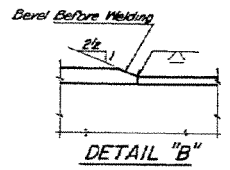
Note:  
For details C, D, E, F see sheet #12  
For cross frames CF1, CF2, CF3 see sheet #12



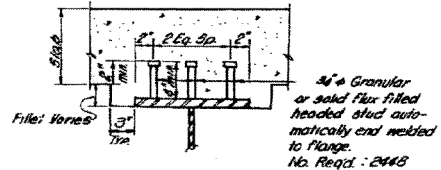
GIRDER ELEVATION



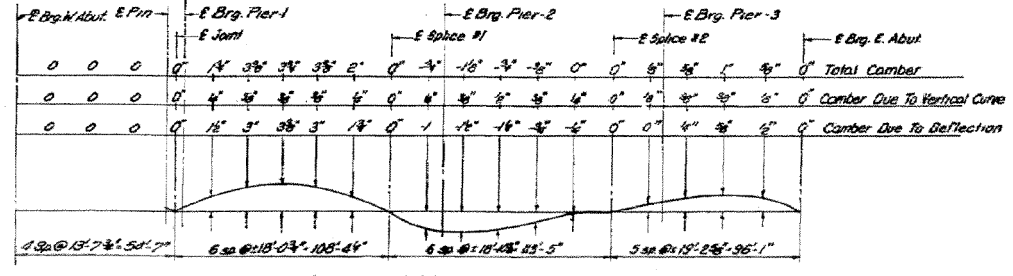
SECTION AT BRG. STIFFENERS



DETAIL "B"



SECTION A-A



CAMBER DIAGRAM

DESIGNED	A.S.V
CHECKED	S.T
DRAWN	M.M.P 11-21-72
CHECKED	A.S.V

FRAMING DETAILS  
FAI-72 SEC. 58-66-HVB  
MACON COUNTY  
STA. 798+54.75 (FAI-72)

REV 1-6-74