

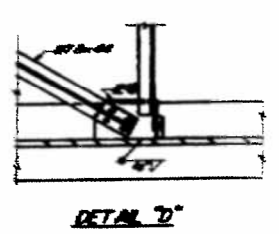
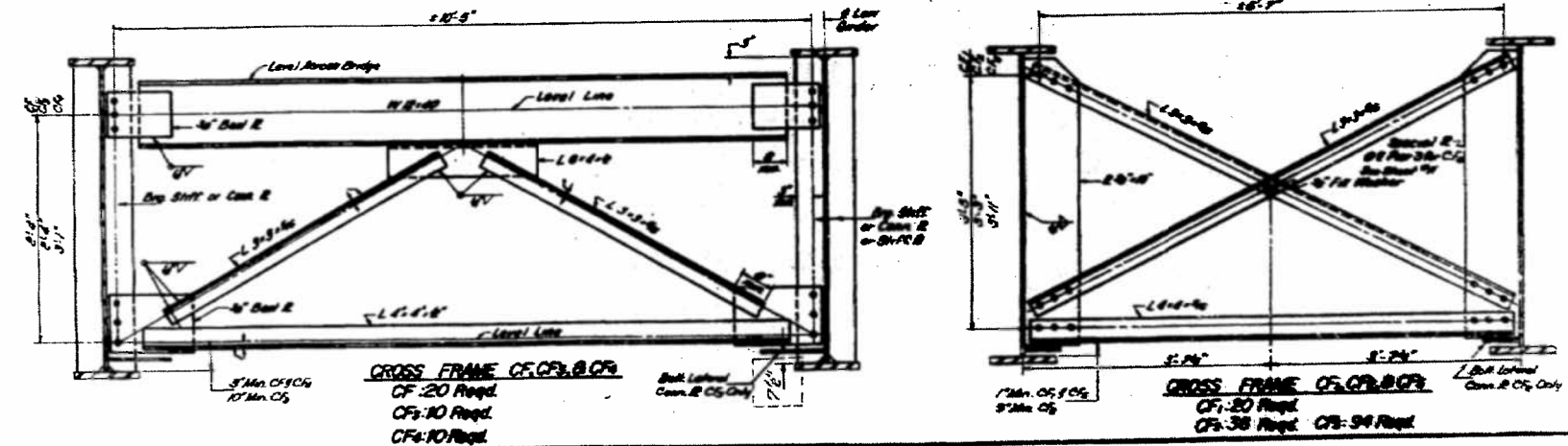
**INTERIOR GIRDER MOMENT TABLE**

	05 Sp.1	Per-1	04 Sp.2	Per-2	05 Sp.3	Per-3	0 Sp.4
1a (k-ft)	6574	2000	2600	2000	2955	2500	2877
1c (k-ft)			7100				
2a (k-ft)	468	723	1181	170	232	1043	808
2c (k-ft)			1582				
3 (k-ft)	1.82	1.85	0.87	1.88	1.95	1.97	1.85
4a (k-ft)	484	148	1170	2872	394	636	560
4c (k-ft)	2.85	2.87	11.85	18.11	4.00	6.03	3.87
5a (k-ft)			0.92				
5c (k-ft)			36.8				
6a (k-ft)	488	141	1187	1882	520	624	554
6c (k-ft)	184	32	223	204	120	144	130
7a (k-ft)	520	173	1820	1206	724	700	683
7c (k-ft)	427	287	14.10	0.17	10.44	8.84	10.96
8a (k-ft)	28.88	6.24	28.11	24.89	15.00	12.69	18.73
8c (k-ft)			63.8				

**INTERIOR GIRDER REACTION TABLE**

	Per-1	Per-2	Per-3	E. End
1a (k)	35.1	111.8	205.4	15.1
1c (k)	48.7	63.3	70.3	45.0
2a (k)	22.3	12.8	15.8	18.4
2c (k)	22.1	178.4	280.6	184.0

Note: 1a and 1c are the moment of inertia and section modulus of the steel section. 2a and 2c are the moment of inertia and section modulus of the composite section used in computing 1a. 1c is the moment of inertia and section modulus of the composite section used in computing 1c. 2a and 2c are the moment of inertia and section modulus of the steel section used in computing 2a and 2c.



DESIGNED BY  
 CHECKED BY  
 DRAWN M.M.P. 11-25-78  
 CHECKED R.B.Y.

REV 3-26-74 A.K.J.

REV 1-1-78

FRAMING DETAILS  
 FA-1-72 SEC. 58-66+MB  
 MACON COUNTY  
 STA. 798+54.75 (FA-1-72)