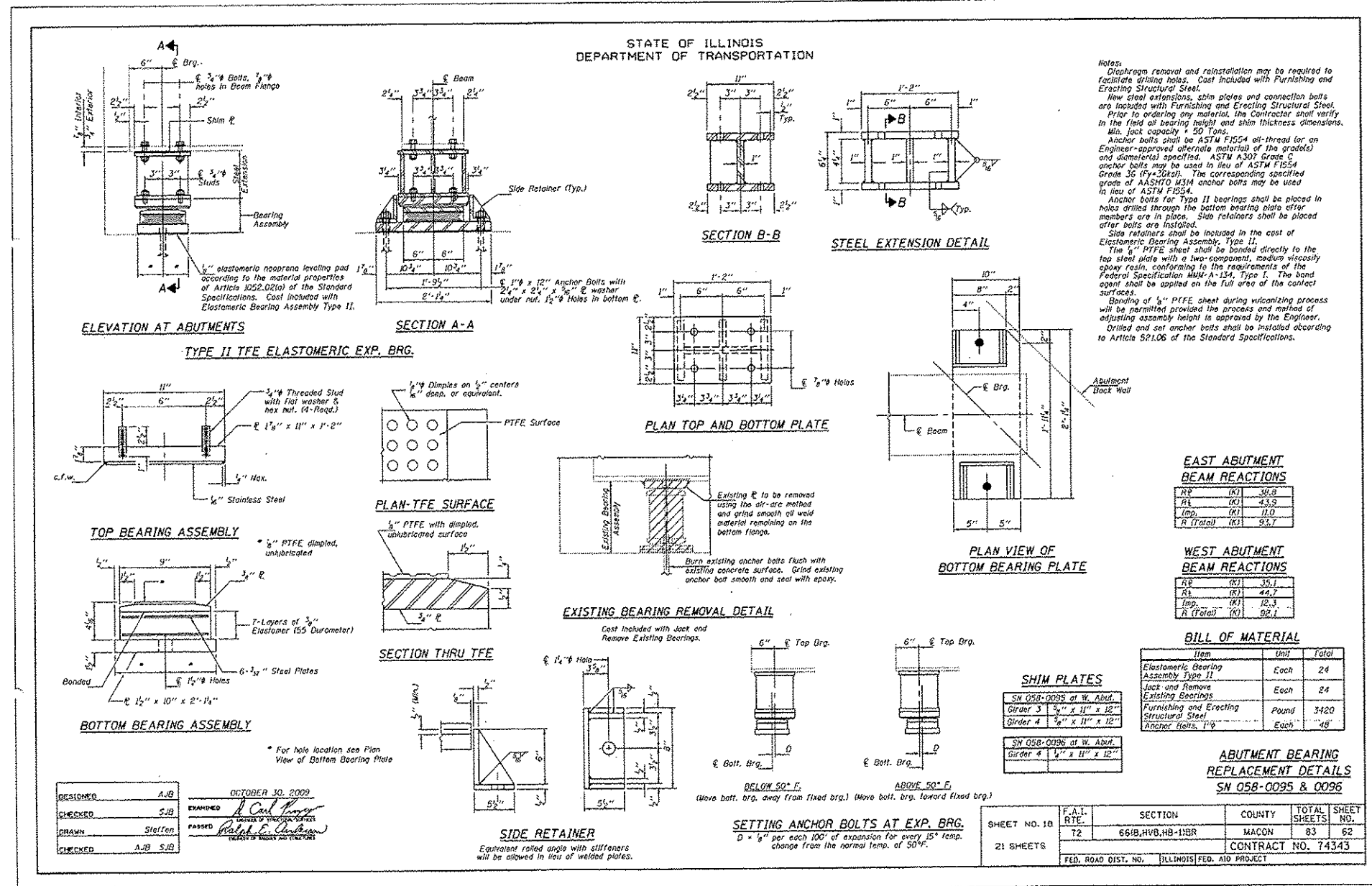


STATE OF ILLINOIS
DEPARTMENT OF TRANSPORTATION



Notes:
Diaphragm removal and reinstallation may be required to facilitate drilling holes. Cast included with Furnishing and Erecting Structural Steel.
New steel extensions, shim plates and connection bolts are included with Furnishing and Erecting Structural Steel. Prior to ordering any material, the Contractor shall verify in the field all bearing height and shim thickness dimensions. Min. Jack capacity = 50 Tons.
Anchor bolts shall be ASTM F1554 oil-thread for an Engineer-approved alternate material of the grade(s) and diameter(s) specified. ASTM A307 Grade C anchor bolts may be used in lieu of ASTM F1554 Grade 36 (Fy=36ksi). The corresponding specified grade of AASHTO M54 anchor bolts may be used in lieu of ASTM F1554.
Anchor bolts for Type II bearings shall be placed in holes drilled through the bottom bearing plate after members are in place. Shim retainers shall be placed after bolts are installed.
Shim retainers shall be included in the cost of Elastomeric Bearing Assembly, Type II.
The 1/2" PTFE sheet shall be bonded directly to the top steel plate with a two-component, medium viscosity epoxy resin, conforming to the requirements of the Federal Specification MM-A-134, Type I. The bond agent shall be applied on the full area of the contact surfaces.
Bonding of 1/2" PTFE sheet during welding process will be permitted provided the process and method of adjusting assembly height is approved by the Engineer. Drilled and cut anchor bolts shall be installed according to Article SP.106 of the Standard Specifications.

| F.A.I. R.T.S. | SECTION | COUNTY | TOTAL SHEETS | SHEET NO. |
|---|------------------|--------|--------------------|-----------|
| T2 | 6618,HVB,HB-118R | MACON | 83 | 62 |
| FED. ROAD DIST. NO. ILLINOIS FED. AID PROJECT | | | CONTRACT NO. 74343 | |