

F.A.S. RTE.	SECTION	COUNTY	TOTAL SHEETS	SHEET NO.
1724 2715		EFFINGHAM	9	1
		ILLINOIS	CONTRACT NO. 74635	

*07 BRIDGE PAINTING 2014-5

STATE OF ILLINOIS
DEPARTMENT OF TRANSPORTATION
DIVISION OF HIGHWAYS

**PROPOSED
HIGHWAY PLANS**

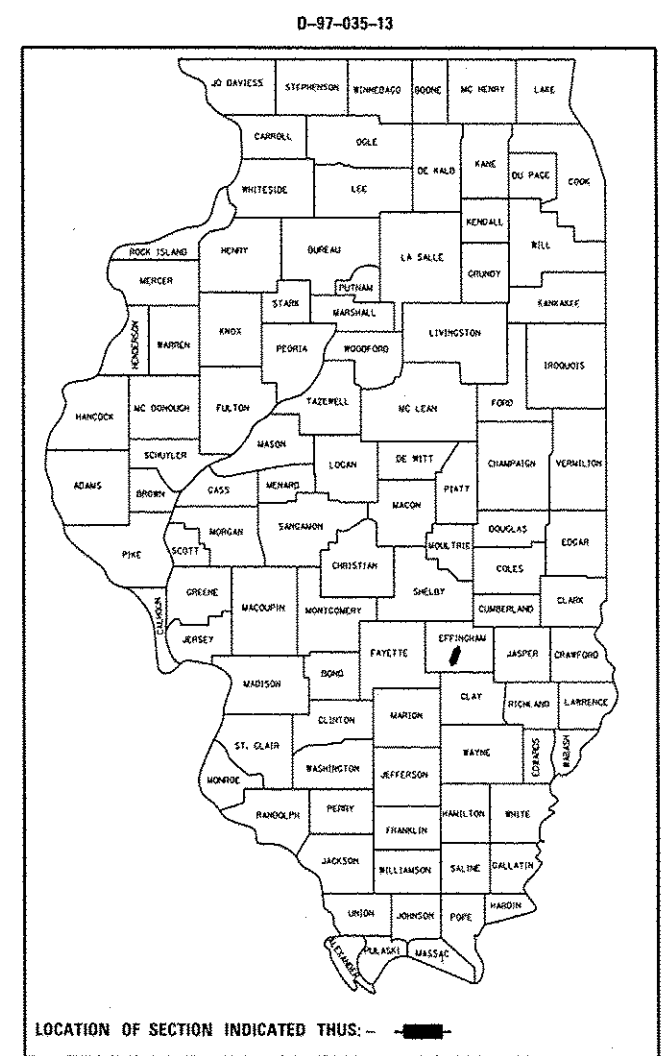
F.A.S. ROUTES 1724 & 2715
SECTION D7 BRIDGE PAINTING 2014-5

BRIDGE PAINTING
EFFINGHAM COUNTY

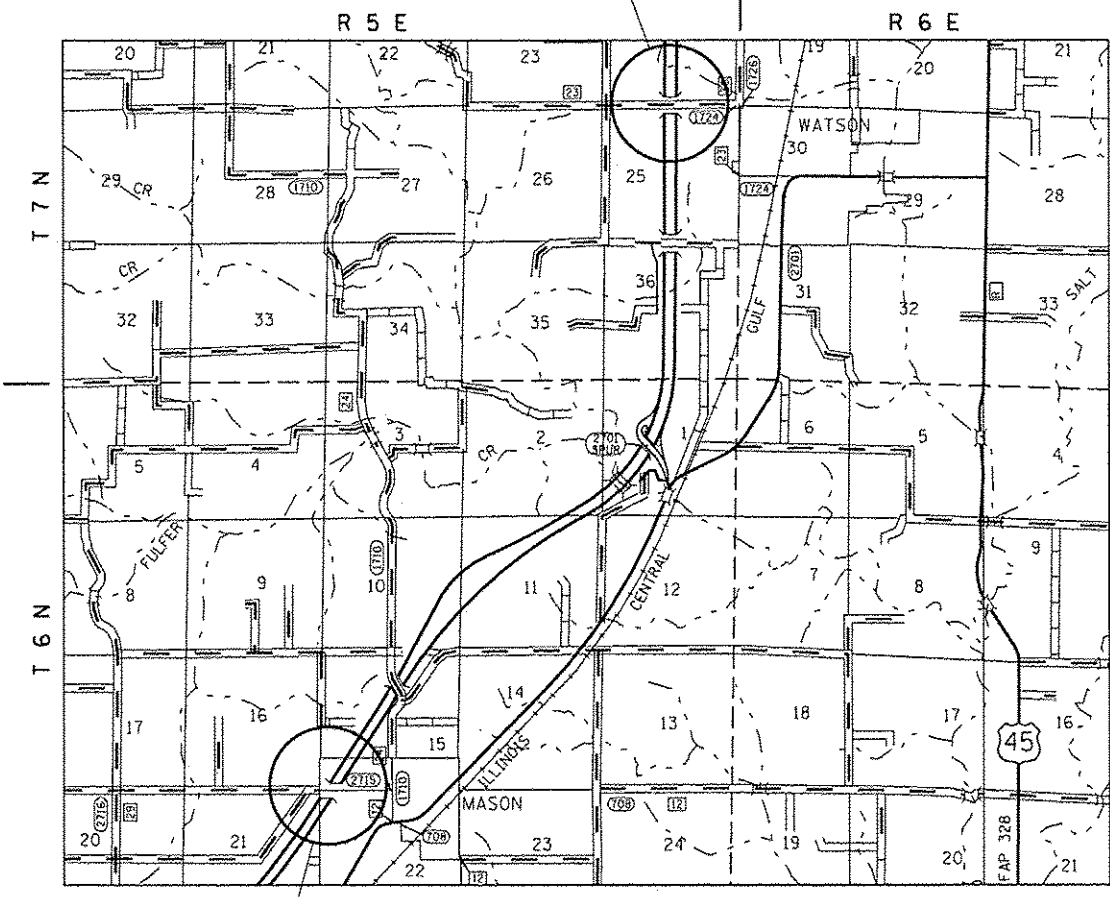
C-97-081-13

FOR INDEX OF SHEETS, SEE SHEET NO. 2

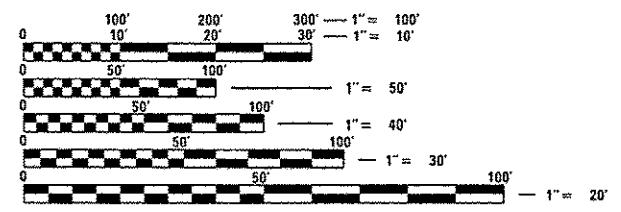
ADT = 14,500 (2011)



LOCATION 1
S.N. 025-0053



LOCATION 2
S.N. 025-0043



FULL SIZE PLANS HAVE BEEN PREPARED USING STANDARD ENGINEERING SCALES. REDUCED SIZED PLANS WILL NOT CONFORM TO STANDARD SCALES. IN MAKING MEASUREMENTS ON REDUCED PLANS, THE ABOVE SCALES MAY BE USED.

J.U.L.I.E.
JOINT UTILITY LOCATION INFORMATION FOR EXCAVATION
1-800-892-0123
OR 811

PROJECT ENGINEER: TOM RONAN
PROJECT MANAGER: TOM RONAN
PHONE: (217)-342-8320
CONTRACT NO. 74635

STATE OF ILLINOIS
DEPARTMENT OF TRANSPORTATION
DIVISION OF HIGHWAYS

SUBMITTED Aug 08 20 13
Page 2 Dirshel per
DEPUTY DIRECTOR OF HIGHWAYS, REGION ENGINEER
October 4 20 13
John D. Baranzelli, P.E.
ENGINEER OF DESIGN AND ENVIRONMENT
October 4 20 13
omer osman, P.E.
DIRECTOR OF HIGHWAYS, CHIEF ENGINEER

PRINTED BY THE AUTHORITY
OF THE STATE OF ILLINOIS