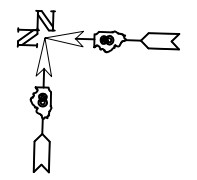


SN 082-0196
I-64 RAMP OVER ST. CLAIR AVE.

NOTE: ALL PAVEMENT MARKING ON STRUCTURES SHALL BE
"PREFORMED PLASTIC PM, TYPE B" (WITH GROOVING),
CONCRETE SURFACE ONLY.



FILE NAME =	USER NAME = burnsideem	DESIGNED -	REVISED -
et:\pw\work\p\dot\burnsideem\d0146805\d876d22-sht-pmk.dgn		DRAWN -	REVISED -
	PLOT SCALE = 100.0000' / 1" =	CHECKED -	REVISED -
	PLOT DATE = 8/16/2013	DATE -	REVISED -

**STATE OF ILLINOIS
DEPARTMENT OF TRANSPORTATION**

PAVEMENT MARKING SHEET

SCALE: 50'=1" SHEET NO. OF SHEETS STA. TO STA.

F.A.I. RTE.	SECTION	COUNTY	TOTAL SHEETS	SHEET NO.
64	82-(1,2,3,4)RS-1	ST. CLAIR	208	54
CONTRACT NO. 76D22				
FED. ROAD DIST. NO. ILLINOIS FED. AID PROJECT				