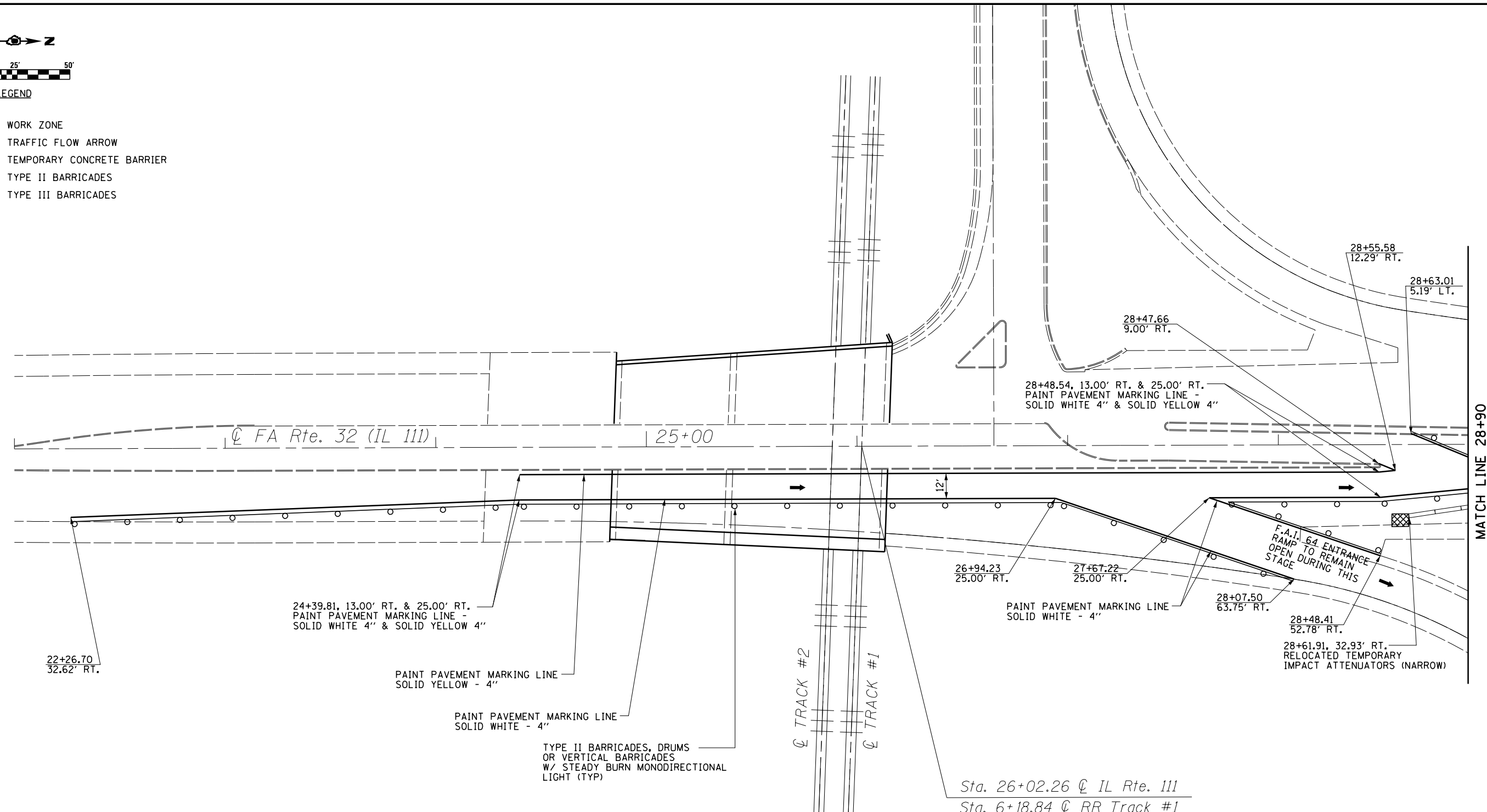


LEGEND

- WORK ZONE
- TRAFFIC FLOW ARROW
- TEMPORARY CONCRETE BARRIER
- TYPE II BARRICADES
- TYPE III BARRICADES



NOTES

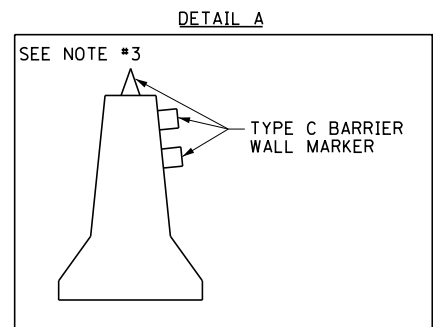
STANDARD 701411-08 SHALL BE USED FOR TRAFFIC CONTROL ON F.A.I. 64 ENTRANCE RAMPS (ONE ON EACH BRIDGE QUADRANT) & ON TURN LANES AT STA 28+70 & 35+10.

TRAFFIC CONTROL SIGNS SHALL BE PLACED ON BOTH THE LEFT AND RIGHT SIDE OF THE PAVEMENT.

TEMPORARY CONCRETE BARRIER SHALL HAVE TWO (2) BARRIER WALL MARKERS PLACED ON TOP OF EACH OTHER, SEE DETAIL A. IN LOCATIONS WHERE THE GLARE SCREEN IS NOT PRESENT A BARRIER WALL MARKER SHALL BE USED ON THE TOP OF EACH TEMPORARY CONCRETE BARRIER. ALL BARRIER WALL MARKERS SHALL BE PLACED AT 25' CENTERS UNLESS OTHERWISE SPECIFIED BY THE ENGINEER. SEE STANDARD 704001-07. THESE ADDITIONAL BARRIER WALL MARKERS SHALL BE INCLUDED IN THE COST OF TEMPORARY CONCRETE BARRIER.

ALL TRAFFIC CONTROL DEVICES SHALL BE IN ACCORDANCE WITH STANDARD 701901-02.

STAGE I TRAFFIC CONTROL STANDARDS
 701411-08 - USE FOR SHOULDER AND LANE CLOSURE NEAR ENTRANCE/EXIT RAMP
 701606-08 - USE FOR APPROACH TO LANE CLOSURE AND FOR LANE CLOSURE (MODIFIED WITH BARRIER)
 701901-02 - USE FOR TRAFFIC CONTROL DEVICES
 704001-07 - USE FOR TEMPORARY CONCRETE BARRIER
 720001-01 & 720006-03 - USE FOR PROPOSED CONSTRUCTION SIGNS
 780001-03 - USE FOR STAGING PAVEMENT MARKINGS



SUGGESTED STAGE II PROCEDURES

1. RELOCATE TEMPORARY CONCRETE BARRIERS, IMPACT ATTENUATORS, AND TRAFFIC CONTROL DEVICES AS REQUIRED.
2. MOVE ALL TRAFFIC TO STAGE II TRAFFIC LANE.
3. COMPLETE IMPROVEMENTS IN STAGE II WORK ZONE ON STRUCTURE

SUGGESTED FINAL STAGE PROCEDURES

1. REMOVE ALL TEMPORARY TRAFFIC BARRIERS AND CONTROL DEVICES.
2. INSTALL SHORT-TERM PAVEMENT MARKINGS.
3. OPEN ROADWAY TRAFFIC.
4. CONSTRUCT STRIPING ON ROADWAY TO MATCH EXISTING STRIPING.

FILE NAME =	USER NAME = \$USER\$	DESIGNED - MBH	REVISED -	STATE OF ILLINOIS DEPARTMENT OF TRANSPORTATION	TRAFFIC CONTROL PLAN - STAGE II ILL RTE 111 - STA 22+00 TO 28+90			F.A.I. RTE. 64	SECTION 82-3HB-1	COUNTY ST. CLAIR	TOTAL SHEETS 208	SHEET NO. 125
		CHECKED - SJH	REVISED -		SCALE:	SHEET NO. 1 OF 4 SHEETS	STA.	TO STA.	CONTRACT NO. 76D22			
		DRAWN - MBH	REVISED -									
		CHECKED - SJH	REVISED -									