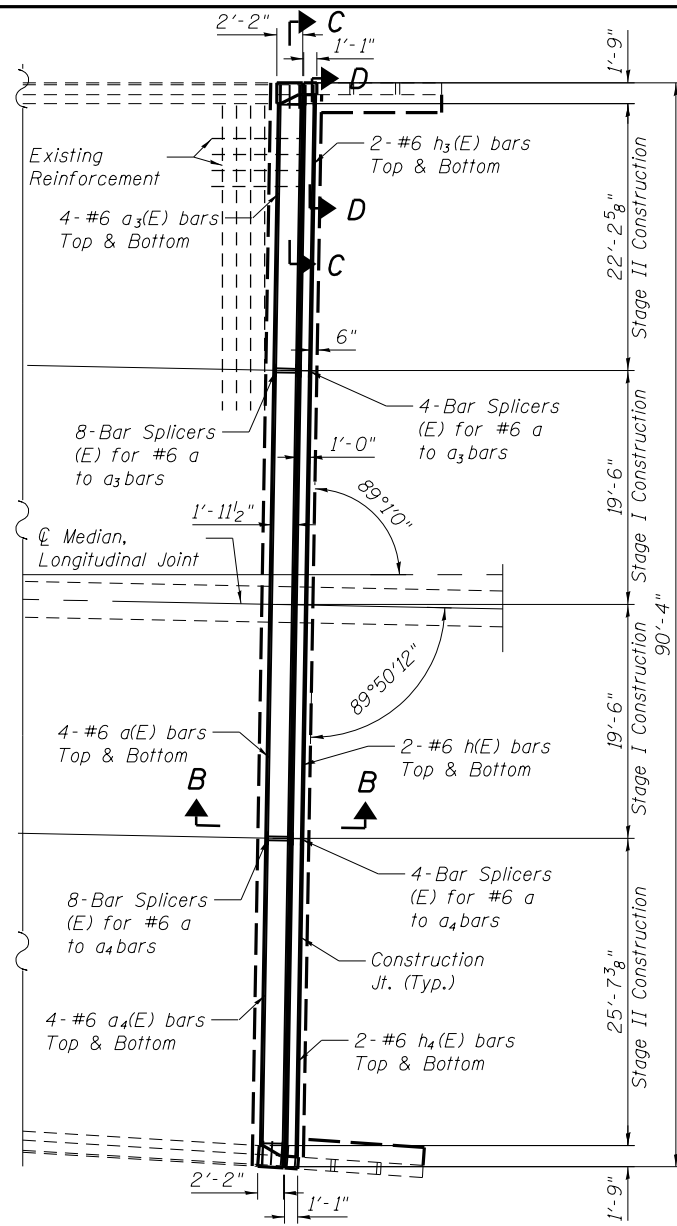
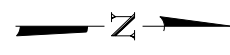
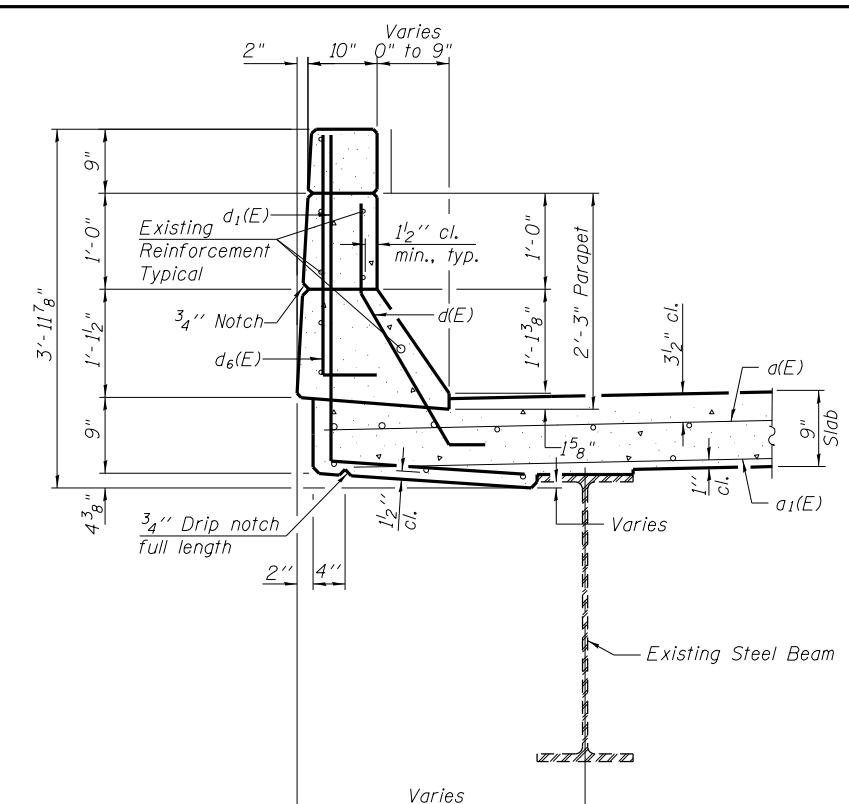


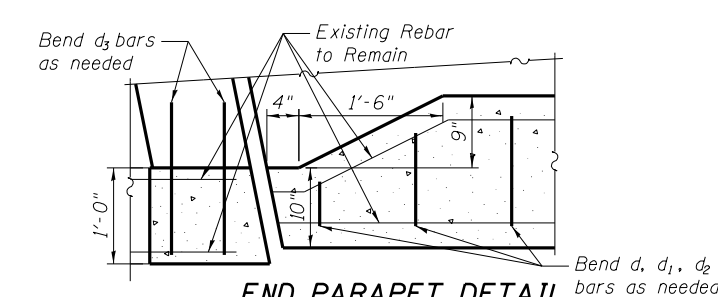
CONCRETE REMOVAL
(North Abut. shown)



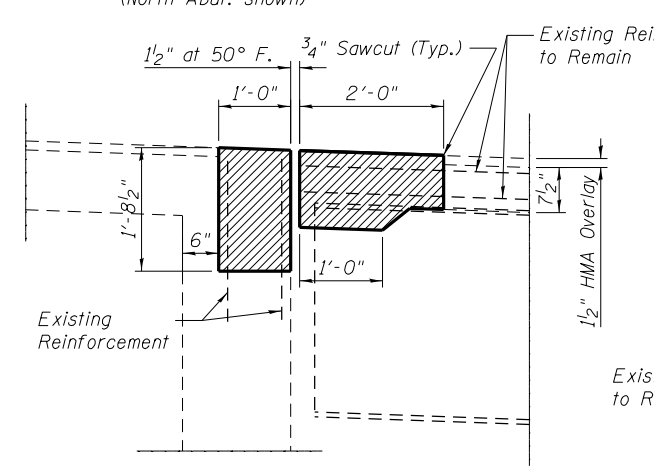
CONCRETE REPLACEMENT
(North Abut. shown)



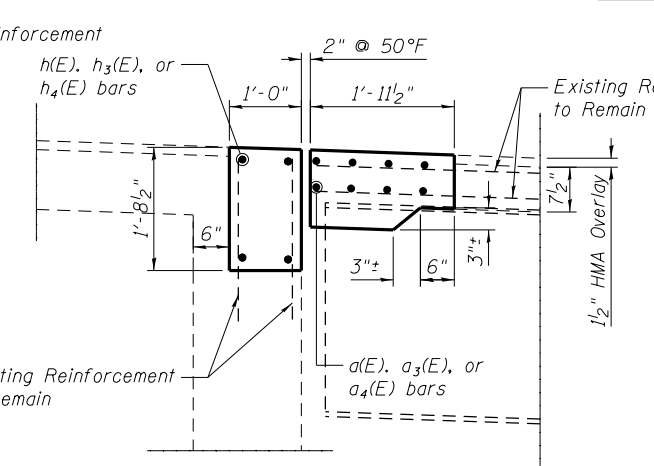
SECTION C-C



END PARAPET DETAIL

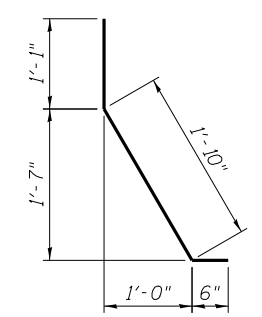


SECTION A-A

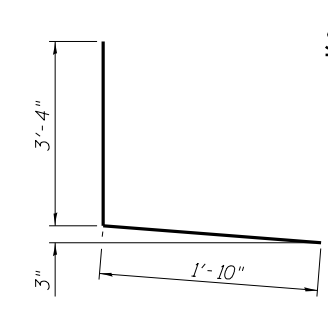


SECTION B-B

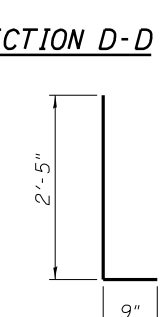
MINIMUM BAR LAP
#6 bar = 3'-1"



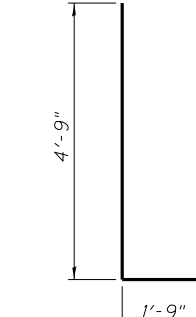
BAR d(E)



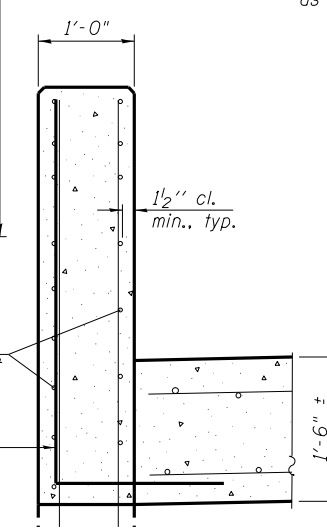
BAR d4(E)



BAR d6(E)



BAR d5(E)



SECTION D-D

SUPERSTRUCTURE BILL OF MATERIAL

Bar	No.	Size	Length	Shape
a(E)	16	#6	20'-11"	—
a3(E)	8	#6	23'-8"	—
a4(E)	8	#6	27'-1"	—
d(E)	6	#5	3'-5"	⌋
d1(E)	3	#4	4'-5"	⌋
d2(E)	3	#4	2'-5"	⌋
d3(E)	2	#4	5'-9"	⌋
d4(E)	3	#4	5'-2"	⌋
d5(E)	2	#4	6'-6"	⌋
d6(E)	3	#4	3'-2"	⌋
h(E)	8	#6	20'-11"	—
h3(E)	4	#6	22'-9"	—
h4(E)	4	#6	26'-3"	—
Bar Splicers		Each	24	
Reinforcement Bars, Epoxy Coated		Pound	1730	
Concrete Superstructure		Cu. Yds.	12.2	
Concrete Removal		Cu. Yds.	12.3	
Preformed Strip Seal		Foot	91	

Bars indicated thus 4x2 -#6 etc. indicates 4 lines of bars with 2 lengths per line.

BENTON & ASSOCIATES, INC.

FILE NAME = P:\10e2166-2\Design\	USER NAME =	DESIGNED - MBH	REVISED - 10/3/13
Plans\ 082-0166		CHECKED - SJH	REVISED -
0820166-76022-006-Joint.dgn	PLOT SCALE =	DRAWN - MBH	REVISED -
	PLOT DATE	CHECKED - SJH	REVISED -

STATE OF ILLINOIS
DEPARTMENT OF TRANSPORTATION

CONCRETE REMOVAL & REPLACEMENT
STRUCTURE NO. 082-0166

SHEET NO. 7 OF 11 SHEETS

F.A.I. RTE.	SECTION	COUNTY	TOTAL SHEETS	SHEET NO.
64	82-3HB-1	ST. CLAIR	208	193
				CONTRACT NO. 76022
FED. ROAD DIST. NO. 8 ILLINOIS FED. AID PROJECT				