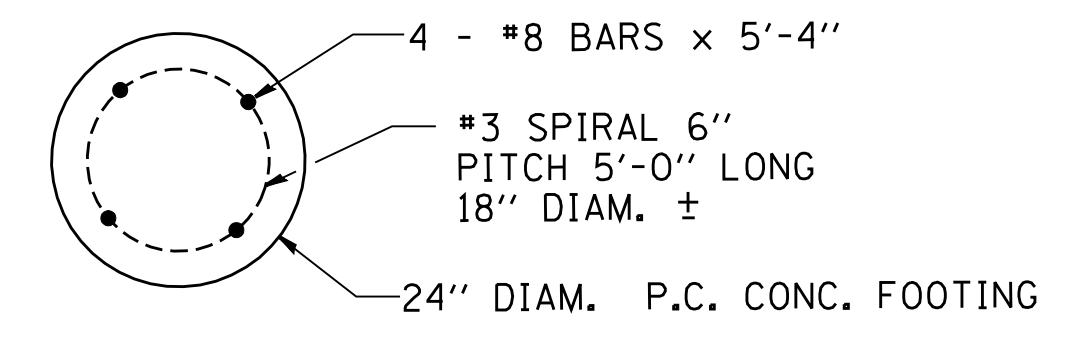
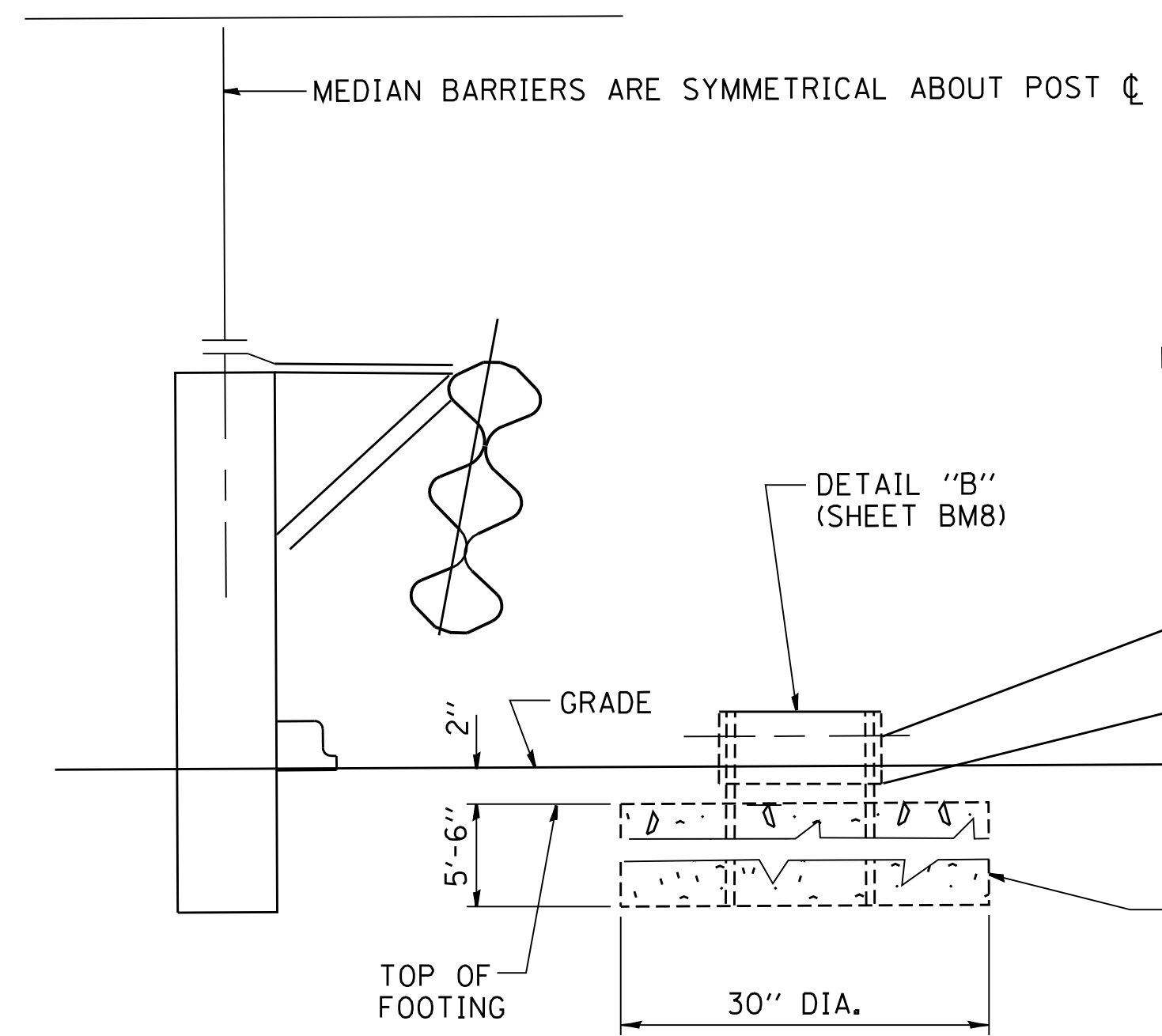


DETAIL "A"



DETAIL "B"

ELEVATION VIEW

SECTION A-A

NOTES:

1. POSTS AND POST SPACING ARE SHOWN IN POST TABLE. IT IS THE INTENT OF THIS TABLE TO PROVIDE AN OPTION FOR POSTS AND POST SPACING, THUS ALLOWING FOR THE MOST ECONOMICAL SELECTION. BARRIER BEHAVIOR IS DEPENDANT ON DEVELOPMENT OF POST STRENGTH IN SOIL. EMBEDMENT LENGTHS IN POST TABLE ARE BASED ON COMPACTED BASE MATERIAL. OTHER EMBEDMENTS OR FOOTINGS CAN BE USED IF POST BREAKING STRENGTH IS DEVELOPED.
2. POSTS SHALL BE OF TIMBER WITH STRESS GRADE OF 1200 PSI OR MORE. TESTING SHALL BE IN ACCORDANCE WITH WEST COAST LUMBER INSPECTION BUREAU, SOUTHERN PINE INSPECTION BUREAU, OR OTHER APPROPRIATE TIMBER ASSOCIATION. POSTS SHALL BE ROUGH SAWN (UNPLANED) WITH NOMINAL DIMENSIONS INDICATED. ALL TIMBER SHALL RECEIVE PRESERVATION TREATMENT IN ACCORDANCE WITH A.A.S.H.T.O. DESIGNATION M-133
3. BOLTS SHALL CONFORM TO REQUIREMENTS OF A.S.T.M. A307 AND NUTS TO REQUIREMENTS OF A.S.T.M. A563, GRADE "A" OR BETTER, AND BE GALVANIZED IN ACCORDANCE WITH A.S.T.M. A153, EXCEPT WHEN SPECIFIED OTHERWISE. BOLTS AND NUTS SHALL BE OF THE HEX OR HEAVY HEX TYPES. WASHERS SHALL BE MADE OF STEEL AND BE GALVANIZED IN ACCORDANCE WITH THE REQUIREMENTS OF A.S.T.M. A153.
4. WELDING SHALL CONFORM TO THE CURRENT "SPECIFICATIONS FOR WELDED HIGHWAY AND RAILING BRIDGES" OF THE AMERICAN WELDING SOCIETY, A.W.S.D. 2.0
5. STEEL POSTS AND PLATES SHALL CONFORM TO A.S.T.M. A36 AND SHALL BE GALVANIZED IN ACCORDANCE WITH A.S.T.M. A123.
6. WIRE ROPE AND CONNECTING HARDWARE SHALL CONFORM TO THE REQUIREMENTS OF A.A.S.H.T.O. M-30, EXCEPT WHERE SPECIFIED OTHERWISE.

POST TABLE

POST SIZE	POST SPACING	EMBEDMENT D	BEAM SUPPORT SPACING
-----------	--------------	-------------	----------------------