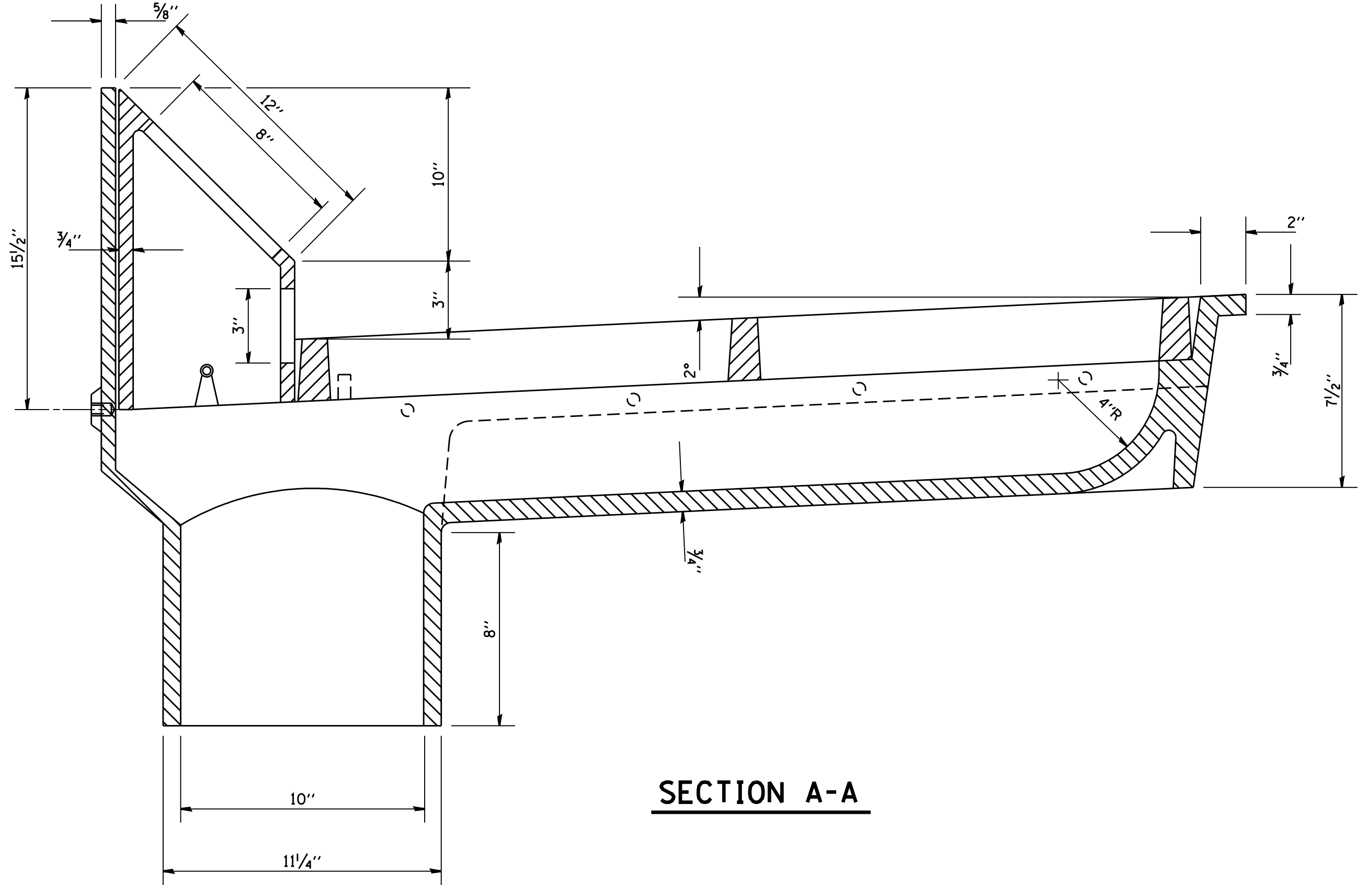


**PLAN**

**BRIDGE SCUPPER - TYPE "C"**

NF - 0332 440  
ESTIMATED WEIGHT 623\*



**SECTION A-A**

SCHEDULE OF QUANTITIES	
STRUCTURE	NO. REQUIRED
TOTAL	

MATERIAL: CAST GREY IRON ASTN A-48, CLASS 35B  
FINISH: NONE

NOTE: A NEOPRENE PAD SHALL BE PROVIDED BETWEEN THE SCUPPER AND THE BEAM. (BY OTHERS)

FILE NAME = W:\diststd\22x34\cs03.dgn

USER NAME = gag1e0bt  
PLOT SCALE = 50.0000 ' / IN.  
PLOT DATE = 1/4/2008

DESIGNED -  
DRAWN -  
CHECKED -  
DATE -

REVISED - M. REZNICEK 10-18-02  
REVISED -  
REVISED -  
REVISED -

**STATE OF ILLINOIS  
DEPARTMENT OF TRANSPORTATION**

**EXPRESSWAY UNIT DETAIL  
BRIDGE SCUPPER TYPE "C"**  
SCALE: NONE SHEET NO. 1 OF 1 SHEETS STA. TO STA.

F.A. RTE.	SECTION	COUNTY	TOTAL SHEETS	SHEET NO.
CS-03		CONTRACT NO.		
FED. ROAD DIST. NO. 1 ILLINOIS FED. AID PROJECT				