

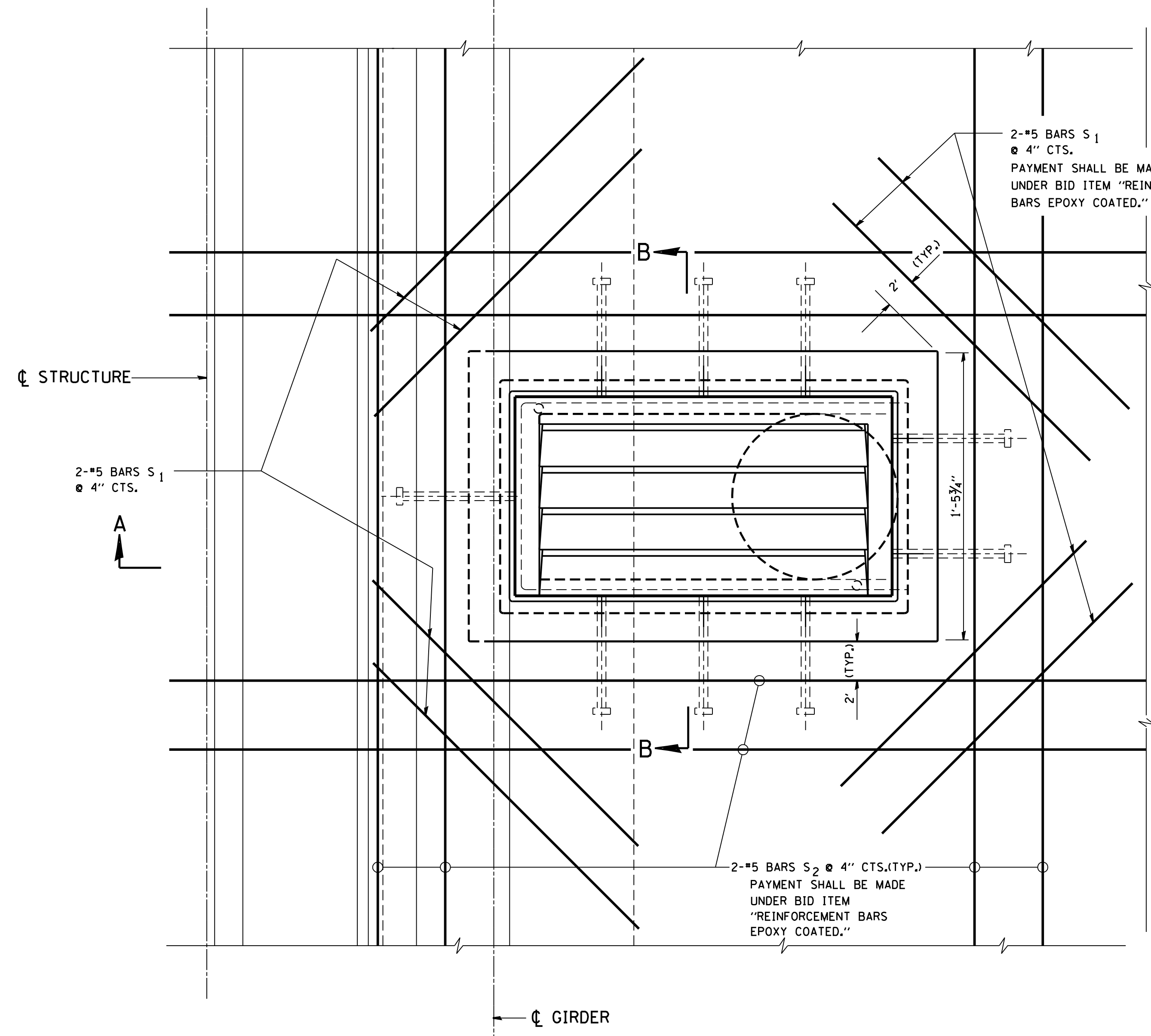
CL STRUCTURE

NOTES:

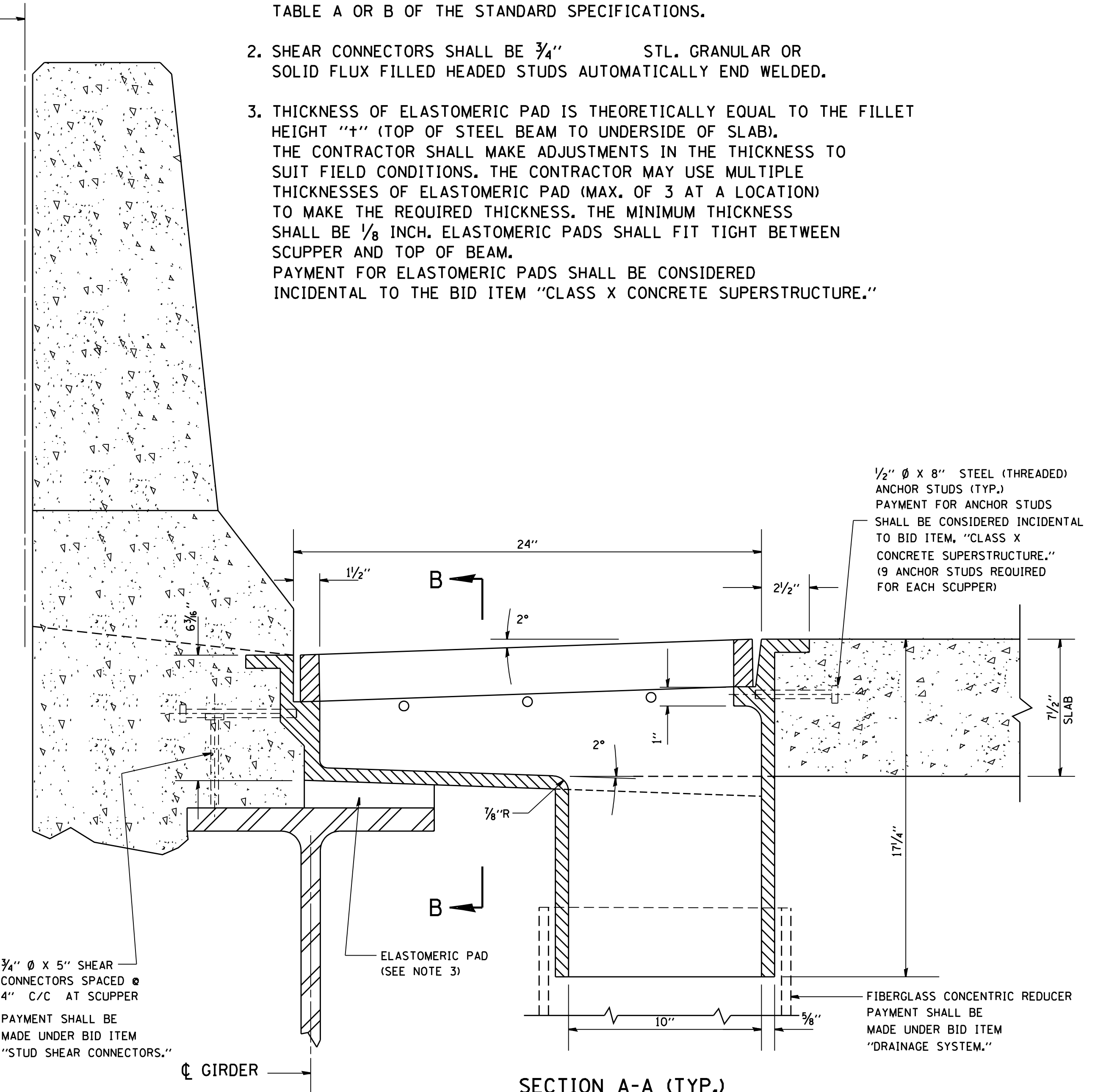
1. ELASTOMERIC PADS SHALL BE IN ACCORDANCE WITH ARTICLE 718.20, TABLE A OR B OF THE STANDARD SPECIFICATIONS.
2. SHEAR CONNECTORS SHALL BE 3/4" STL. GRANULAR OR SOLID FLUX FILLED HEADED STUDS AUTOMATICALLY END WELDED.
3. THICKNESS OF ELASTOMERIC PAD IS THEORETICALLY EQUAL TO THE FILLET HEIGHT "t" (TOP OF STEEL BEAM TO UNDERSIDE OF SLAB). THE CONTRACTOR SHALL MAKE ADJUSTMENTS IN THE THICKNESS TO SUIT FIELD CONDITIONS. THE CONTRACTOR MAY USE MULTIPLE THICKNESSES OF ELASTOMERIC PAD (MAX. OF 3 AT A LOCATION) TO MAKE THE REQUIRED THICKNESS. THE MINIMUM THICKNESS SHALL BE 1/8 INCH. ELASTOMERIC PADS SHALL FIT TIGHT BETWEEN SCUPPER AND TOP OF BEAM. PAYMENT FOR ELASTOMERIC PADS SHALL BE CONSIDERED INCIDENTAL TO THE BID ITEM "CLASS X CONCRETE SUPERSTRUCTURE."

STEEL REINFORCING IN PARAPETS AND DECK SLAB SHOWN ON DECK SLAB AND PARAPET CONTRACT PLANS.

SECTION B-B



A



1/2" Ø X 8" STEEL (THREADED) ANCHOR STUDS (TYP.) PAYMENT FOR ANCHOR STUDS SHALL BE CONSIDERED INCIDENTAL TO BID ITEM, "CLASS X CONCRETE SUPERSTRUCTURE." (9 ANCHOR STUDS REQUIRED FOR EACH SCUPPER)

3/4" Ø X 5" SHEAR CONNECTORS SPACED @ 4" C/C AT SCUPPER PAYMENT SHALL BE MADE UNDER BID ITEM "STUD SHEAR CONNECTORS."

ELASTOMERIC PAD (SEE NOTE 3)

FIBERGLASS CONCENTRIC REDUCER PAYMENT SHALL BE MADE UNDER BID ITEM "DRAINAGE SYSTEM."

SECTION A-A (TYP.)

SECTION THRU MEDIAN PARAPET-SHOWN

(SIMILAR IF TYPE "B" SCUPPERS ARE USED AT OUTSIDE PARAPET.)

CL GIRDER

PLAN

REINFORCEMENT BAR SCHEDULE

MARK	NO.	SIZE	LENGTH	SHAPE
S ₁ (E)	8	#5	2'-0"	—
S ₂ (E)	8	#5	5'-0"	—

FILE NAME = W:\diststd\22x34\cs05.dgn

USER NAME = gag1onobt

DESIGNED -
DRAWN -

REVISED - M. REZNICEK 10-01-91
REVISED -
REVISED -
REVISED -

PLOT SCALE = 50.0000' / IN.
PLOT DATE = 1/4/2008

CHECKED -
DATE -

**STATE OF ILLINOIS
DEPARTMENT OF TRANSPORTATION**

**EXPRESSWAY UNIT DETAIL
BRIDGE SCUPPER - TYPE "B" ASSEMBLY**

F.A. RTE.	SECTION	COUNTY	TOTAL SHEETS	SHEET NO.
	CS-05			
FED. ROAD DIST. NO. 1		ILLINOIS FED. AID PROJECT		

SCALE: NONE SHEET NO. 1 OF 1 SHEETS STA. TO STA.