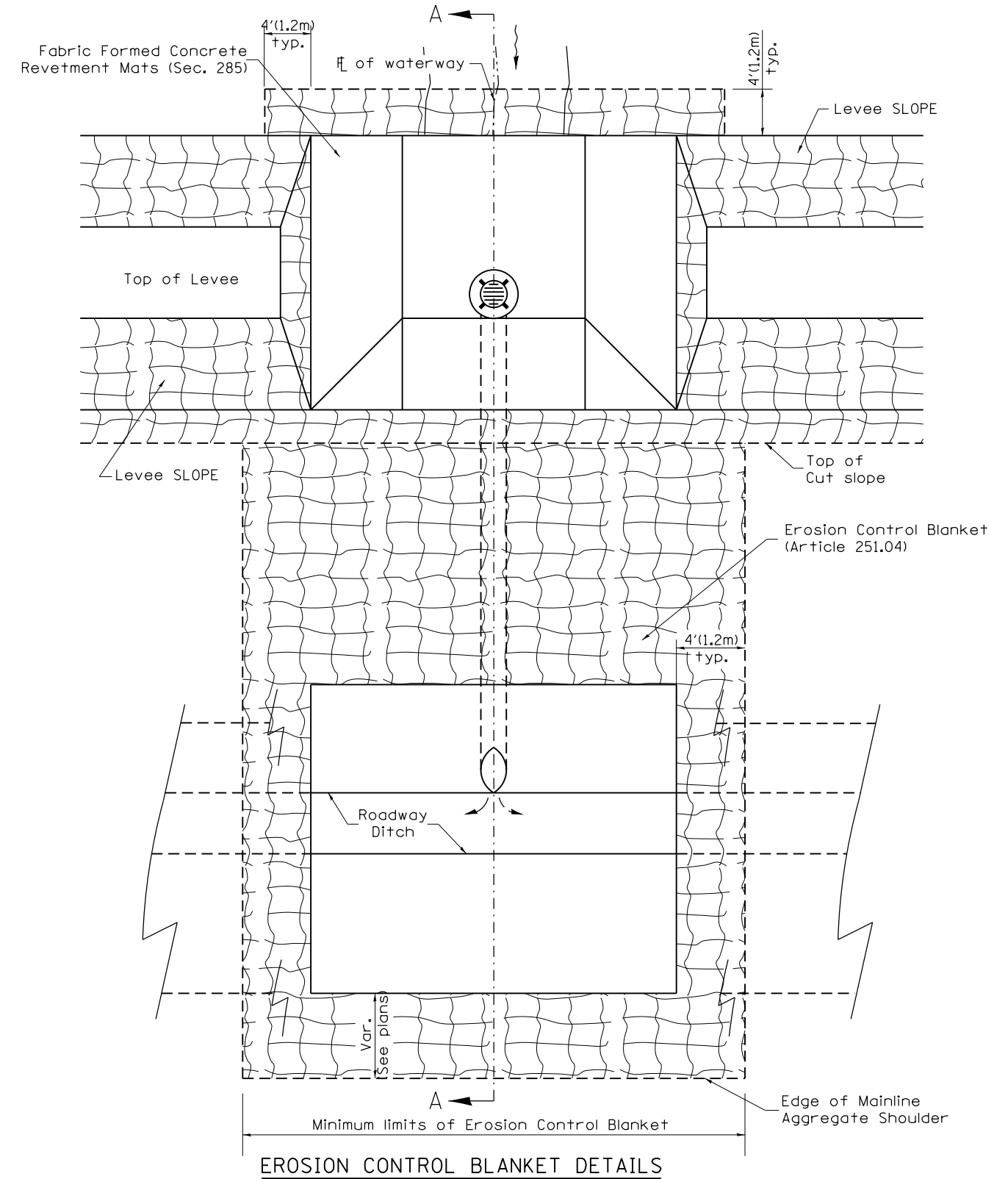
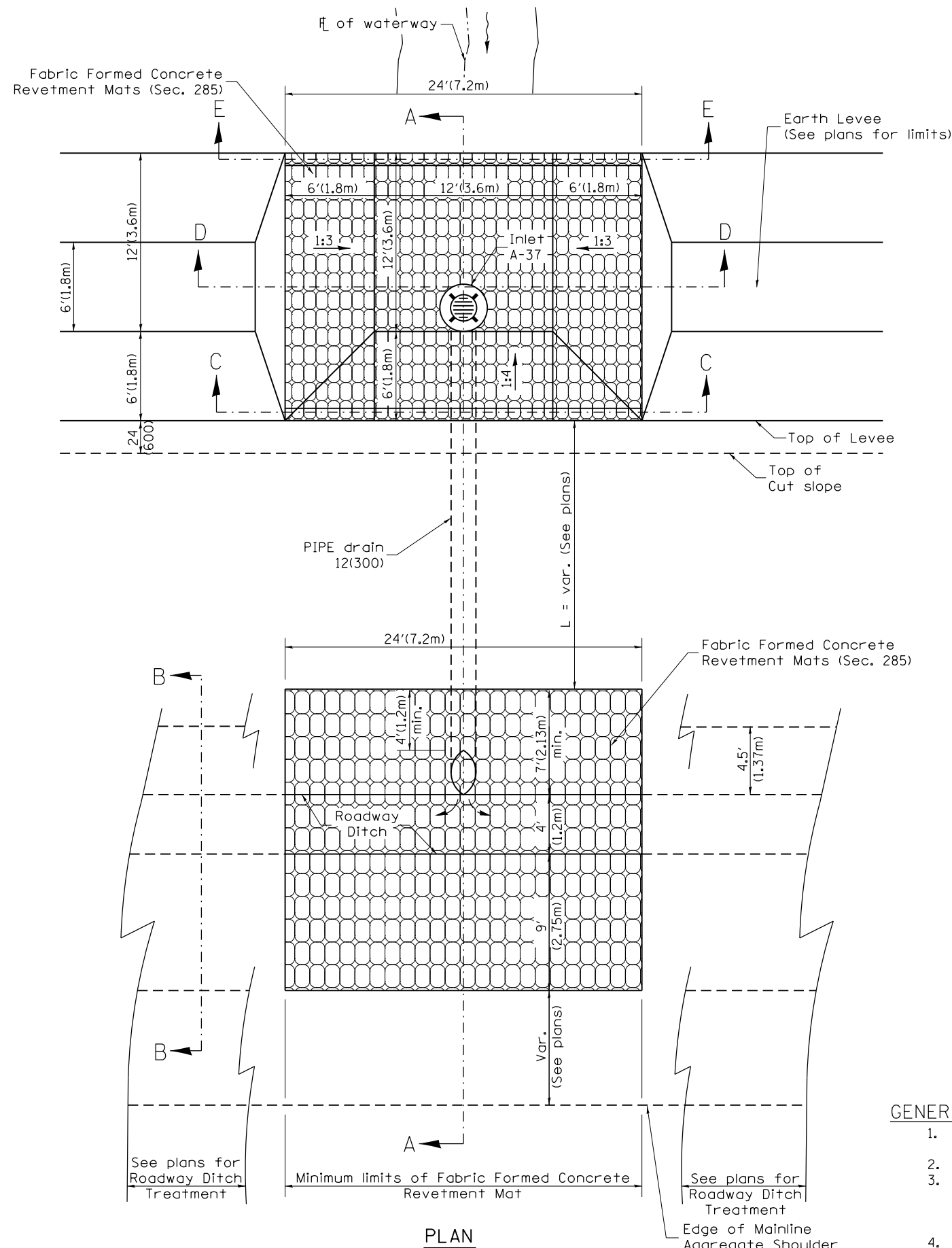


Designer NOTES:
 1. Designer to modify this Special Detail Sheet, as needed for inclusion in plans.
 2. Include State Standard 602301 (Inlet Type A)
 3. Include District Cadd Details for Fabric Formed Concrete Revetment Mats, Type 37 Grate and PIPE Elbow.

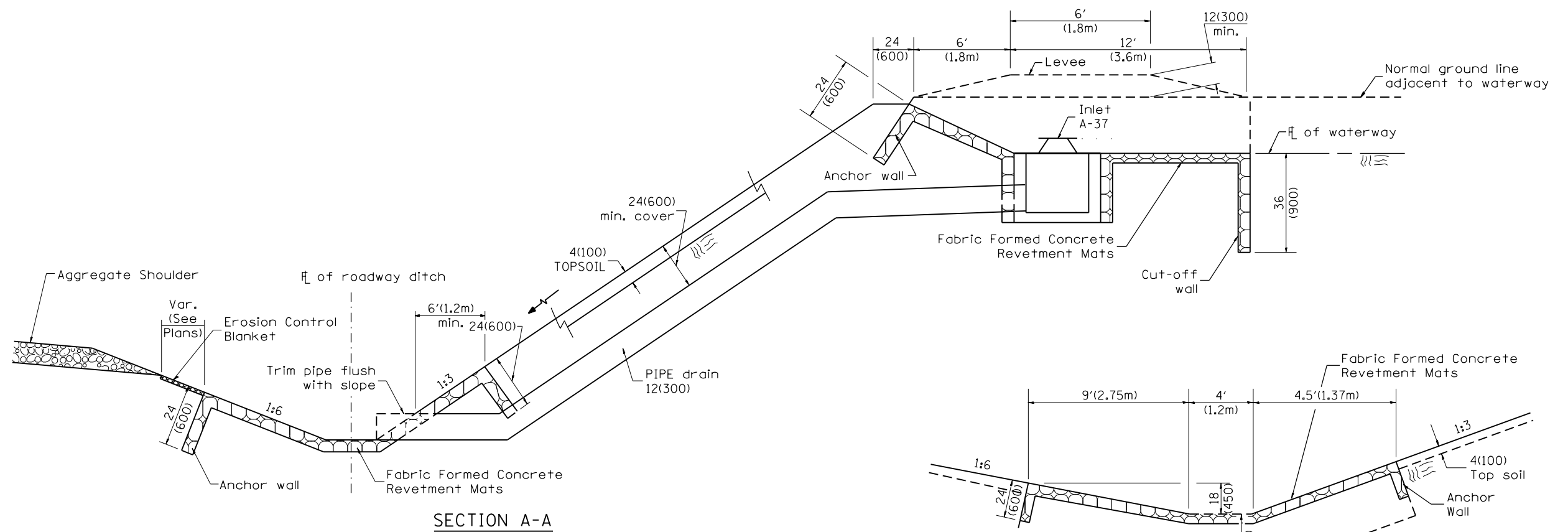


GENERAL NOTES

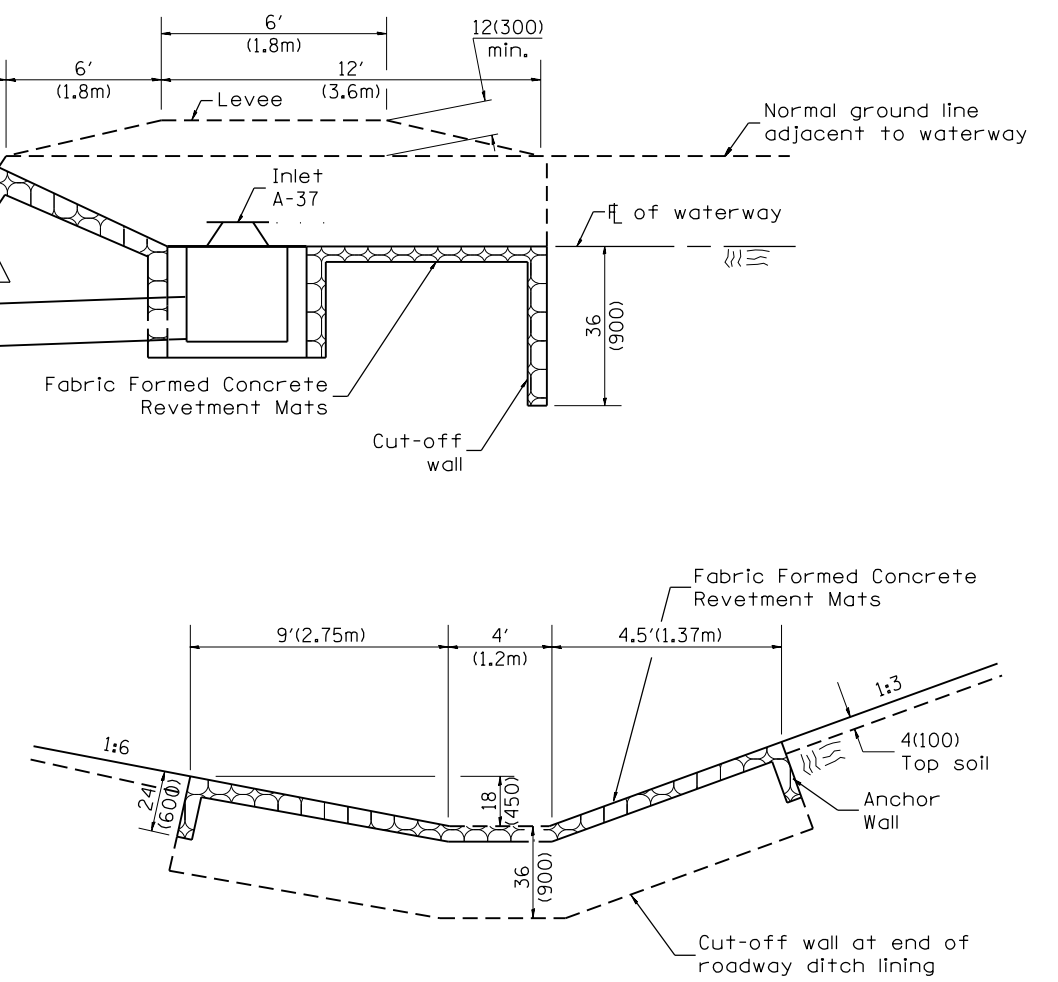
1. Fabric Formed Concrete Revetment Mats shall conform to SECTION 285.
2. Erosion Control Blanket shall conform to Article 251.04.
3. The material for Pipe Drains shall be Bituminous Coated Galvanized Corrugated Steel Culvert Pipe or Bituminous Coated Corrugated Aluminum Alloy Pipe in accordance with Article 601.02(f) or 601.02(i).
4. An approved Mastic Material (Article 1055.01) shall be applied to the inside of the Connecting Bands.

All slope ratios are expressed as units of vertical displacement to units of horizontal displacement (V:H).
 All dimensions are in inches (millimeters) unless otherwise noted.

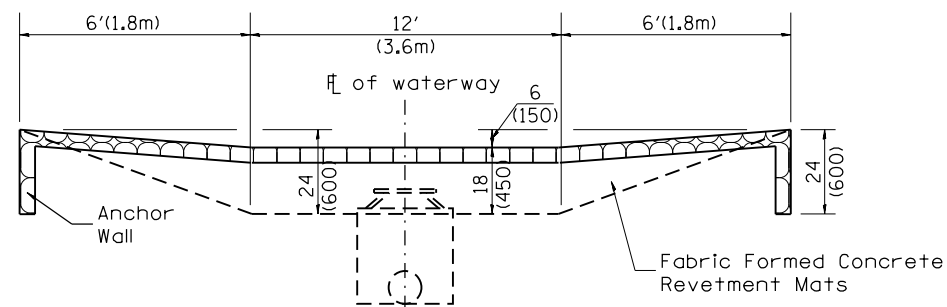
1-1-97	RENUM. A-12.07, NEW REVISION BOX	T.P.			STATE OF ILLINOIS DEPARTMENT OF TRANSPORTATION	WATERWAY EROSION CONTROL, UPSTREAM TREATMENT, PIPE DRAIN WITH INLET	F.A. RTE.	SECTION	COUNTY	TOTAL SHEETS	SHEET NO.
3-1-97	CORRECT STD. NO. IN NOTES	J.A.									
10-16-06	REVISED TO 2007 SPEC.	M.A.									
NOT TO SCALE						SHT. 1 OF 2	CONTRACT NO.				
						CADD STD. 285111-D4	ILLINOIS FED. AID PROJECT				



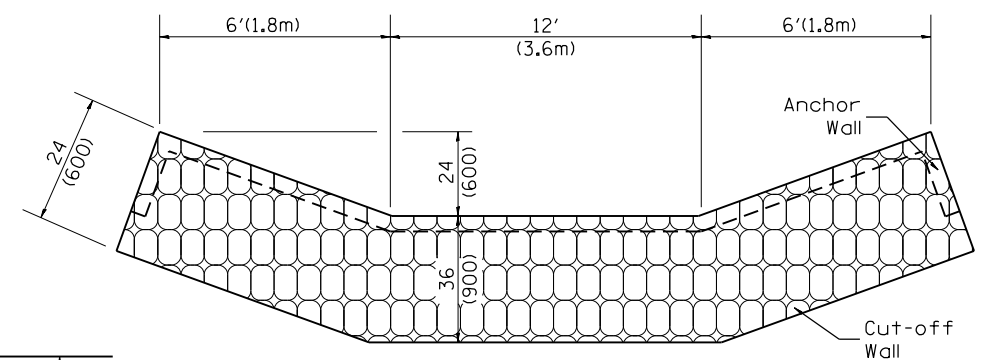
SECTION A-A



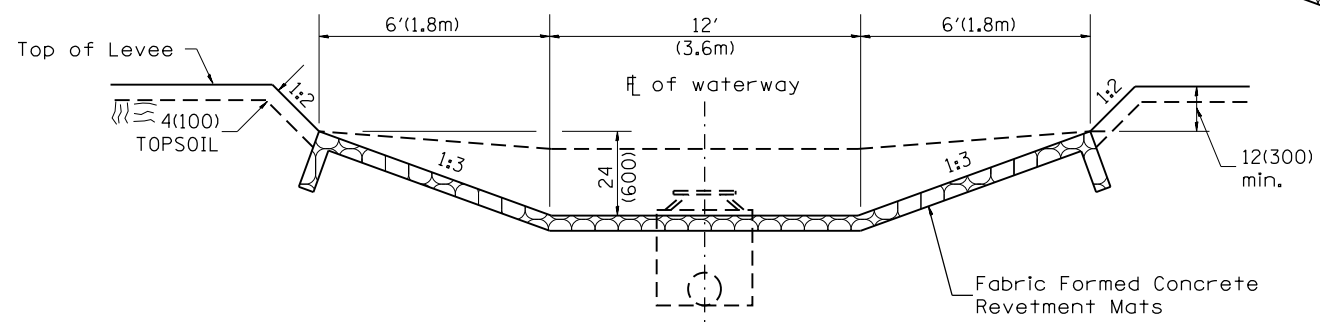
SECTION B-B



SECTION C-C
(WEIR DETAIL)



SECTION E-E
(CUT-OFF WALL)



SECTION D-D

All slope ratios are expressed as units of vertical displacement to units of horizontal displacement (V:H).
All dimensions are in inches (millimeters) unless otherwise noted.