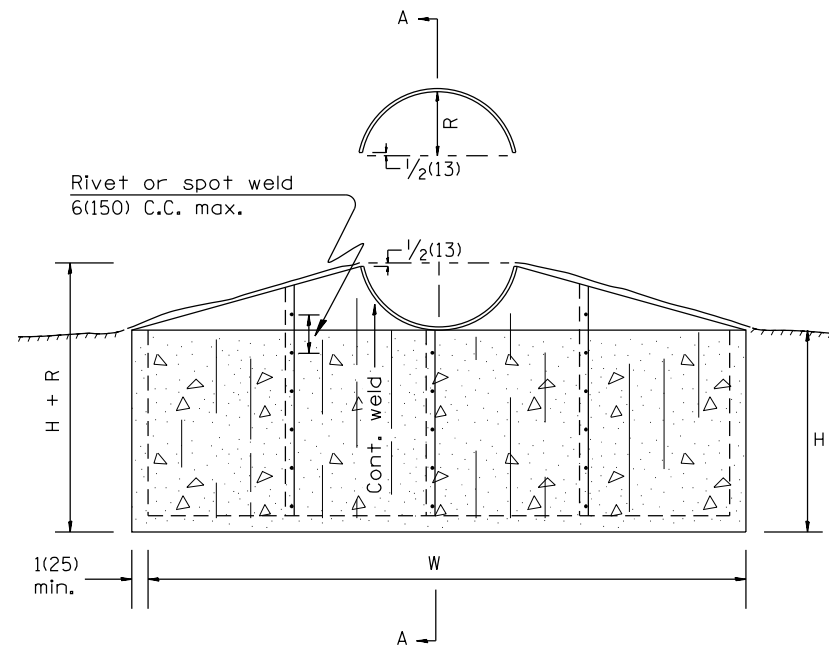
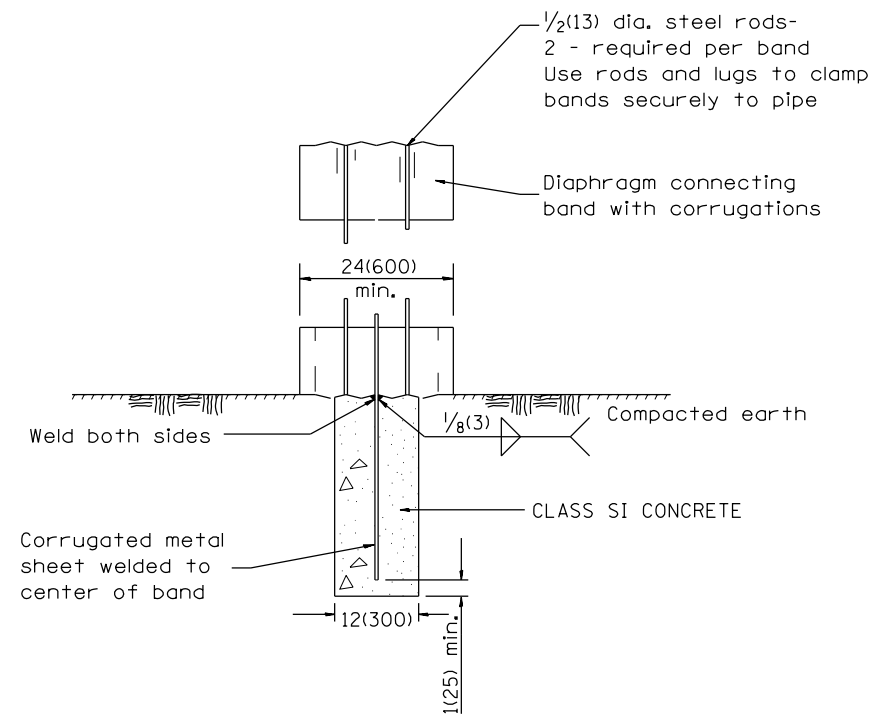


DESIGNER NOTES:
 1. USE WITH DISTRICT CADD STANDARD: "SLOPE DRAIN DETAILS FOR EXPOSED PIPES"
 2. ADD DISTRICT SPECIAL PROVISION.

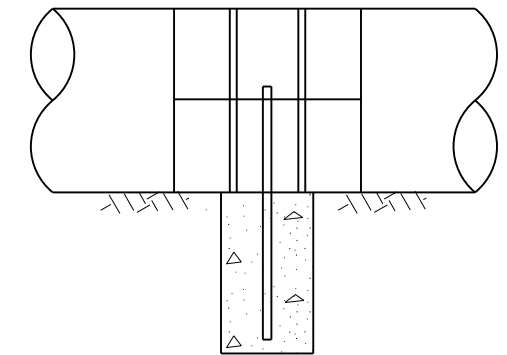


NOTES FOR COLLARS:

1. Materials and coatings for all collars shall be the same as that specified for the pipe.
2. Collars shall be shop fabricated, assembled and marked by painting to identify matching half sections of each collar.
3. The laps between the half sections and between the pipe and connecting bands shall be caulked with fiberized asphalt mastic at the time of installation.
4. All tank lugs, rods, and nuts shall be galvanized steel. Where aluminum collars are used, the rods and lugs shall be separated from the aluminum bands by at least two (2) layers of 2(50) wide plastic tape with a total thickness of 2 1/4 mils or more.
5. The collars shall be welded to the connecting bands as shown on the drawings. All welds shall be treated as specified for Class I, II, and III welds, miscellaneous. (Refer to AWS Standard Specifications)
6. Bands shall be fabricated from material having the same class of corrugations as the pipe to which it is to be attached.
7. Trench for CLASS SI CONCRETE to be excavated after the base of the pipe has been compacted.
8. Collar shall be installed at mid-height of slope or 25' (7.6m) maximum spacing.
9. Collar shall be installed 5'±(1.5m) from pipe section joint or connecting band.



SECTION A-A



**SECTION A-A
(SHOWING PIPE)**

SEEPAGE COLLAR DIMENSION TABLE

PIPE DIAMETER	FABRICATIONS DIMENSIONS	
	W(WIDTH)	H(HEIGHT)
12(300) 15(375), 18(450) 21(525), 24(600)	8'-0" (2.44m)	36(915)
27(675) 30(750)	8'-0" (2.44m)	3'-6" (1.07m)
36(900), 42(1050) 48(1200)	10'-0" (3.05m)	3'-6" (1.07m)

COLLAR DIMENSIONS SHOWN MAY BE INCREASED TO ALLOW FABRICATION FROM STANDARD SIZE SHEETS.

SEEPAGE COLLAR SPACING	
Less than 24(600) pipe:	100' (30m) spacing or midpoint
Equal to or greater than 24(600) pipe:	80' (24m) spacing or midpoint

All dimensions are in inches (millimeters) unless otherwise noted.