

PLAN VIEW - INLET BOX

GENERAL NOTES

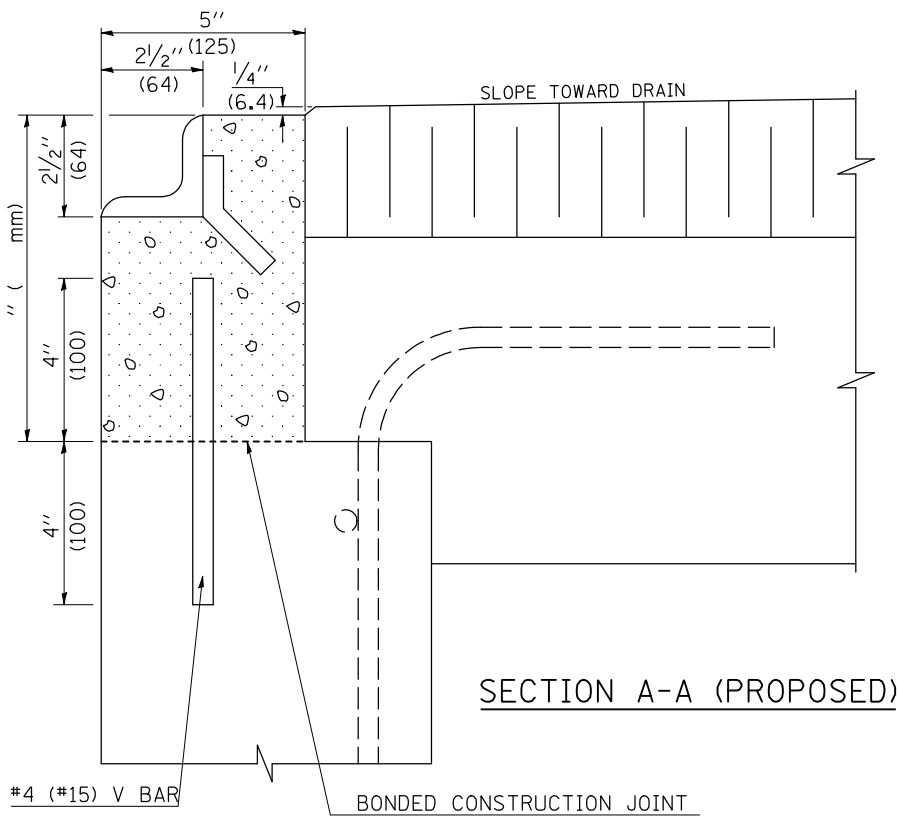
THIS WORK SHALL BE DONE IN ACCORDANCE WITH THE APPLICABLE PORTIONS OF SECTION 602 OF THE STANDARD SPECIFICATIONS.

THIS WORK WILL BE PAID FOR AT THE CONTRACT UNIT PRICE EACH FOR "INLETS TO BE ADJUSTED" WHICH SHALL INCLUDE ALL LABOR, EQUIPMENT & MATERIAL NECESSARY TO COMPLETE THE WORK.

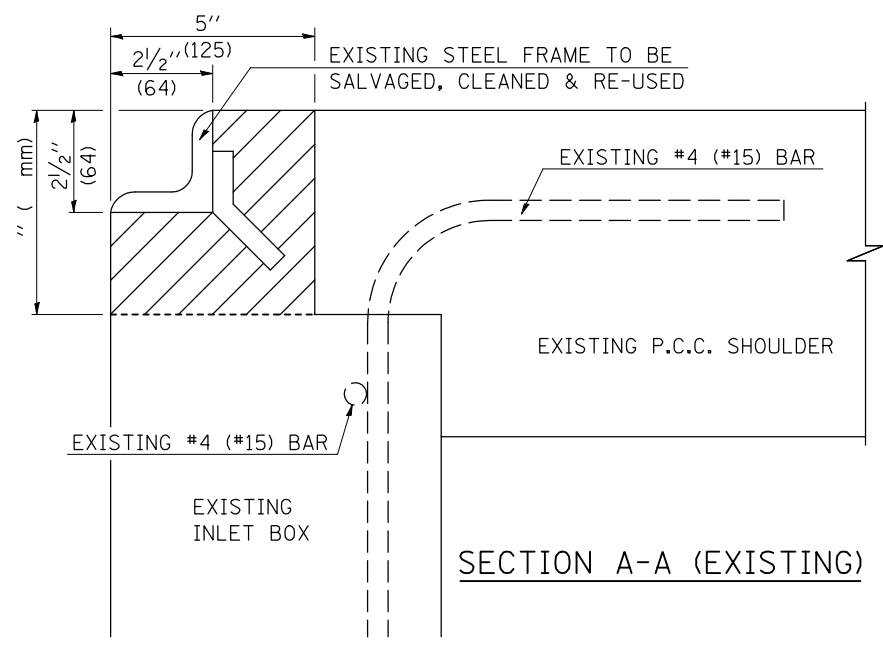
ESTIMATE QUANTITIES:
 CONCRETE REMOVAL - CU. YD. (m³)
 CLASS S.I. CONCRETE - CU. YD. (m³)
 REINFORCEMENT BARS - LBS. (kg)

LEGEND

- CONCRETE REMOVAL
- CLASS S.I. CONCRETE



SECTION A-A (PROPOSED)



SECTION A-A (EXISTING)

Note: All dimensions are in INCHES (millimeters) unless otherwise shown.

FILE NAME =	USER NAME = craigre	DESIGNED -	REVISED - 12/06
ct:\pw\work\PWIDOT\CRAIGRE\d0101509\60260100.dgn		DRAWN -	REVISED -
	PLOT SCALE = 40.000' / IN.	CHECKED -	REVISED -
	PLOT DATE = 1/7/2010	DATE -	REVISED -

**STATE OF ILLINOIS
DEPARTMENT OF TRANSPORTATION**

INLETS TO BE ADJUSTED (PCC SHOULDER)

SCALE: SHEET NO. OF SHEETS STA. TO STA.

DISTRICT 5 DETAIL NO. 60260100

F.A. RTE.	SECTION	COUNTY	TOTAL SHEETS	SHEET NO.
CONTRACT NO.				
FED. ROAD DIST. NO. ILLINOIS FED. AID PROJECT				