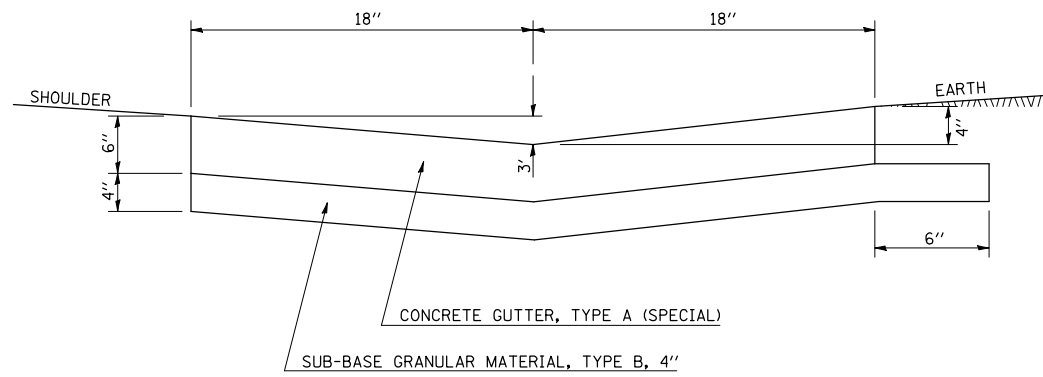
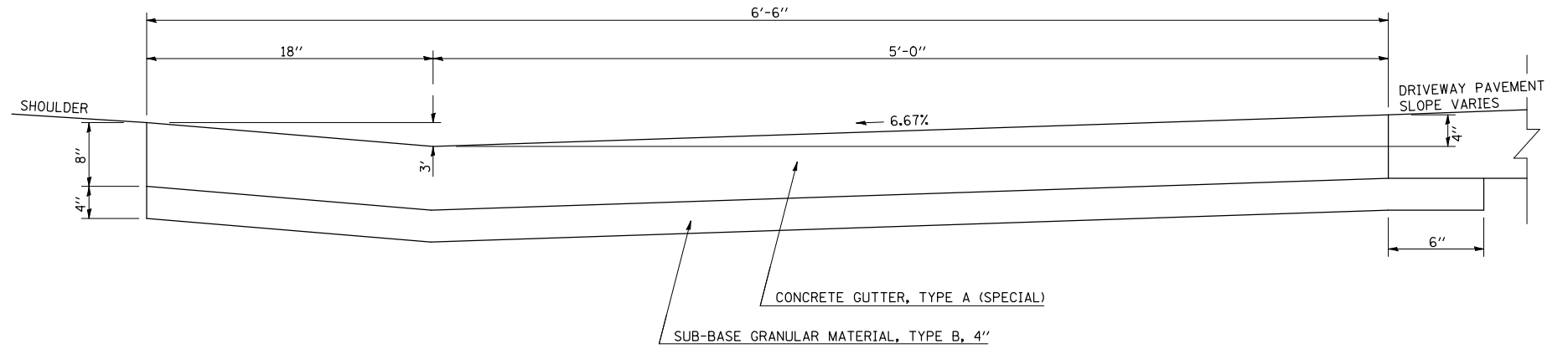


DIMENSIONS OF CONCRETE GUTTER, TYPE A (SPECIAL)



DETAIL OF SPECIAL TYPE A GUTTER THROUGH ENTRANCES



NOTES

This work shall consist of constructing a special Type A concrete gutter as specified herein, at the locations shown on the plans, and in accordance with the applicable portions of Section 606 of the Standard Specifications.

The proposed Concrete Gutter, Type A (Special) shall be constructed with the cross section shown on the details herein. The cross section for the Type A Gutter Special was specifically designed to:

- maximize hydraulic capacity in the gutter section
- minimize the entrance breakover between the Type A Gutter Entrance and the driveway pavement
- Improve ride quality through the Type A Gutter Entrance; therefore no changes in the gutter cross section will be allowed. In addition, all joints and reinforcing steel for Concrete Gutter, Type A (Special), shall conform to the details shown herein, the applicable details of Standard 606001, and the applicable portions of Section 606 of the Standard Specifications.

Concrete Gutter, Type A (Special) will be measured for payment in (feet) along the flow line of the gutter. Concrete inlets, entrances, and outlets along the gutter section will be measured for payment in place and the volume of concrete computed in (cubic yards).

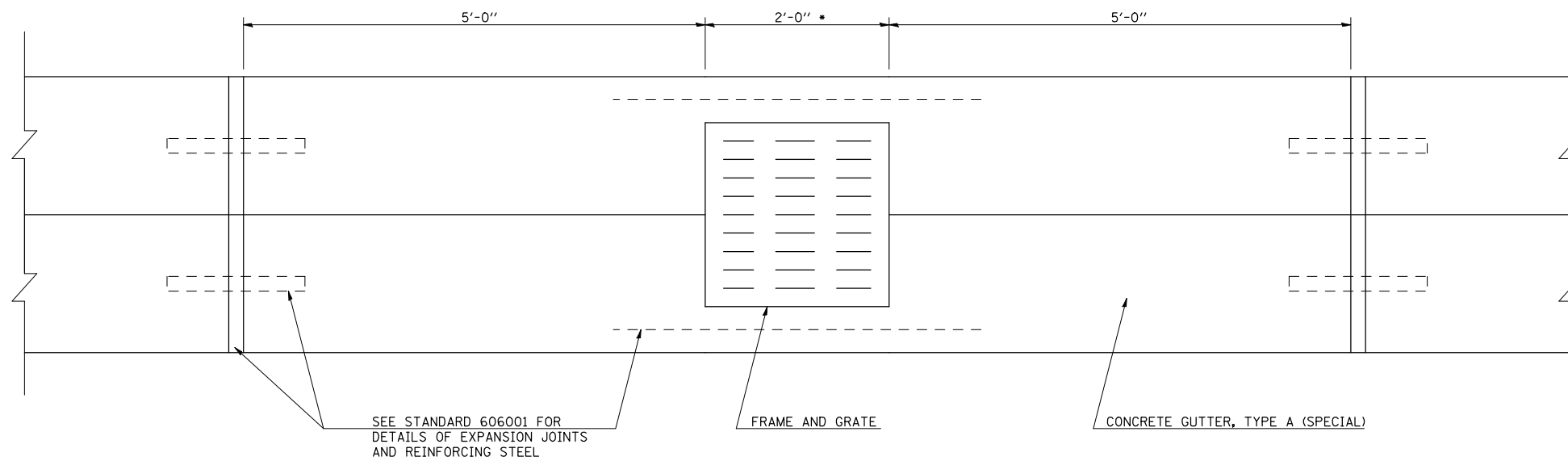
This work will be paid for at the contract unit price per foot for CONCRETE GUTTER, TYPE A (SPECIAL) of the dimensions specified. Concrete inlets, entrances, and outlets along the gutter section will be paid for as CLASS SI CONCRETE (OUTLET).

Sub-Base Granular Material, Type B 4" shall be constructed under the Type A Gutter (Special) and Type A Gutter Entrance.

Gutter, gutter inlet, gutter outlet and gutter entrance shall be tied to the P.C.C. pavement at side streets in accordance with details for longitudinal construction joint shown on Standard 420001. Longitudinal joint tie bars shall be No. 6 at 24" centers.

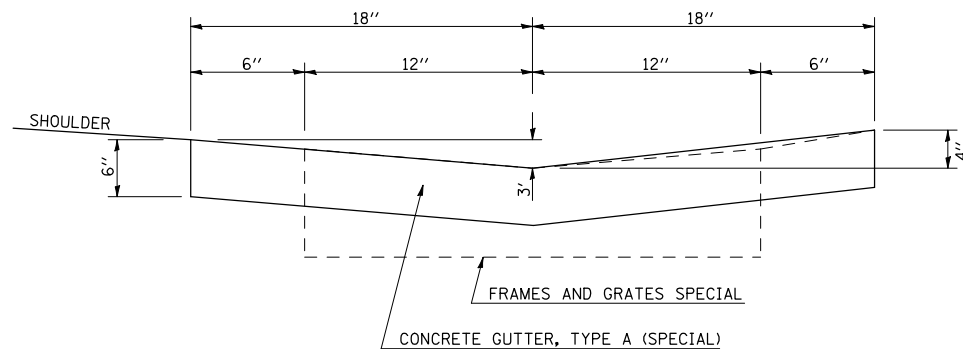
Two 1-1/4" x 18" dowel bars shall be installed in all joints when the gutter is constructed adjacent to flexible pavement.

Note: All dimensions are in INCHES (millimeters) unless otherwise shown.



PLAN VIEW AT INLET LOCATIONS

* THIS DIMENSION WILL BE 5'-0" WHEN 6' MANHOLE SPECIAL AND 2 FRAMES AND GRATES ARE SPECIFIED.



SIDE VIEW AT INLET LOCATIONS

NOTE

Within the 5' section of gutter between the Expansion Joints and Frames and Grates, the gutter cross section shall be constructed to taper from the Concrete Gutter, Type A (Special) cross section to the Frames and Grates Special cross section.

FILE NAME =	USER NAME = craigre	DESIGNED -	REVISED -
et\pwork\pwork\PIDOT\CRAIGRE\d0101509\60602700.dgn		DRAWN -	REVISED -
	PLOT SCALE = 40.0000' / IN.	CHECKED -	REVISED -
	PLOT DATE = 1/7/2010	DATE -	REVISED -

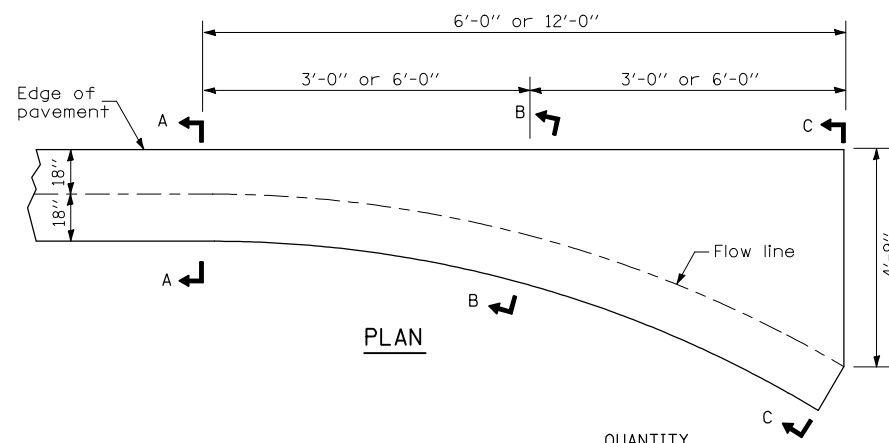
**STATE OF ILLINOIS
DEPARTMENT OF TRANSPORTATION**

CONCRETE GUTTER, TYPE A (SPECIAL)

SCALE: SHEET NO. 1 OF 3 SHEETS STA. TO STA.

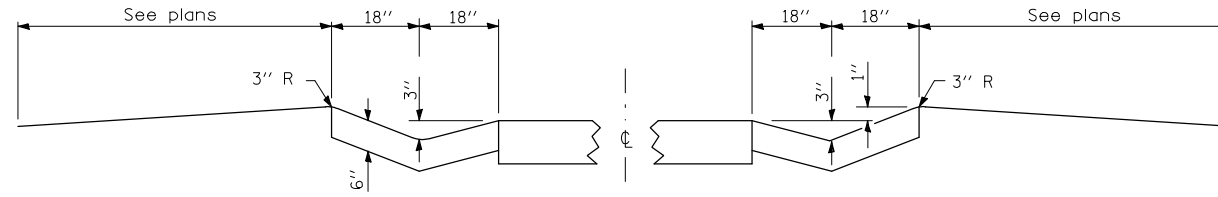
DISTRICT 5 DETAIL NO. 60602700

F.A. RTE.	SECTION	COUNTY	TOTAL SHEETS	SHEET NO.
				CONTRACT NO.
ILLINOIS FED. AID PROJECT				

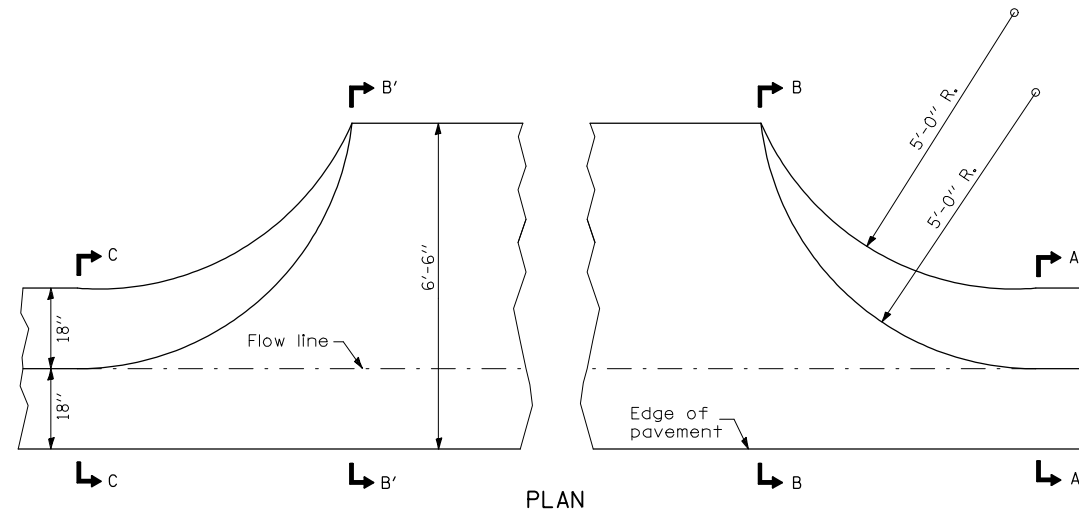


PLAN

QUANTITY
 For 6'-0" Inlets
 Section C-C to Section A-A = 0.46 cu. yd.
 For 12'-0" Inlets
 Section C-C to A-A = 0.92 cu. yd.

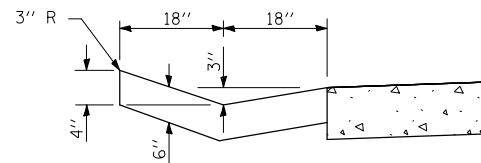


TYPE A GUTTER

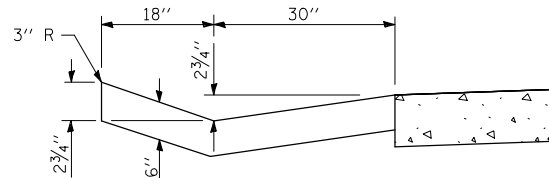


PLAN

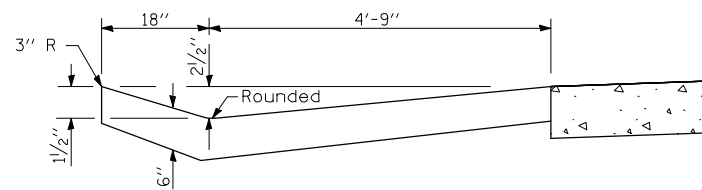
QUANTITY
 Section B'-B' to B-B = 0.16 cu. yd./ft.
 Section C-C to B'-B' + B'-B' to A-A = 0.96 cu. yd.



SECTION A-A

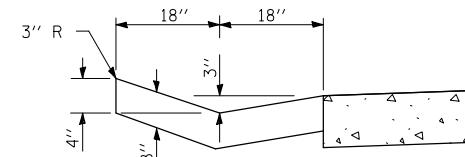


SECTION B-B

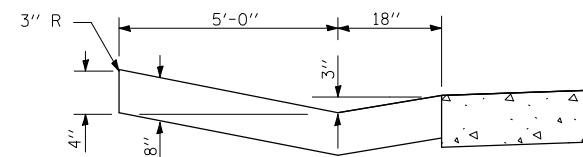


SECTION C-C

INLET



SECTION A-A & C-C



SECTION B-B & B'-B'

ENTRANCE

NOTES

This work shall consist of constructing a special Type A concrete gutter as specified herein, at the locations shown on the plans, and in accordance with the applicable portions of Section 606 of the Standard Specifications.

The proposed Concrete Gutter, Type A (Special) shall be constructed with the cross section shown on the details herein. The cross section for the Type A Gutter Special was specifically designed to:

- maximize hydraulic capacity in the gutter section
- minimize the entrance breakover between the Type A Gutter Entrance and the driveway pavement
- Improve ride quality through the Type A Gutter Entrance; therefore no changes in the gutter cross section will be allowed. In addition, all joints and reinforcing steel for Concrete Gutter, Type A (Special), shall conform to the details shown herein, the applicable details of Standard 606001, and the applicable portions of Section 606 of the Standard Specifications.

Concrete Gutter, Type A (Special) will be measured for payment in (feet) along the flow line of the gutter. Concrete inlets, entrances, and outlets along the gutter section will be measured for payment in place and the volume of concrete computed in (cubic yards).

This work will be paid for at the contract unit price per foot for CONCRETE GUTTER, TYPE A (SPECIAL) of the dimensions specified. Concrete inlets, entrances, and outlets along the gutter section will be paid for as CLASS SI CONCRETE (OUTLET).

Sub-Base Granular Material, Type B 4" shall be constructed under the Type A Gutter (Special) and Type A Gutter Entrance.

Gutter, gutter inlet, gutter outlet and gutter entrance shall be tied to the P.C.C. pavement at side streets in accordance with details for longitudinal construction joint shown on Standard 420001. Longitudinal joint tie bars shall be No. 6 at 24" centers.

Two 1-1/4" x 18" dowel bars shall be installed in all joints when the gutter is constructed adjacent to flexible pavement.

Note: All dimensions are in INCHES (millimeters) unless otherwise shown.

DISTRICT 5 DETAIL NO. 60602700

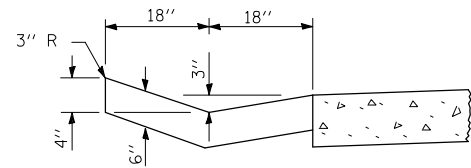
FILE NAME =	USER NAME = craigre	DESIGNED -	REVISED -
et:\pw\work\PWIDOT\CRAIGRE\d0101509\60602700.dgn		DRAWN -	REVISED -
	PLOT SCALE = 40.0000' / IN.	CHECKED -	REVISED -
	PLOT DATE = 1/7/2010	DATE -	REVISED -

**STATE OF ILLINOIS
 DEPARTMENT OF TRANSPORTATION**

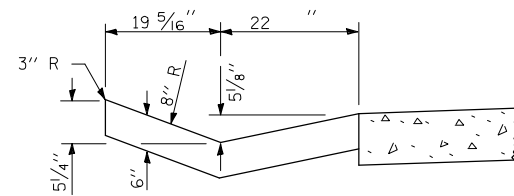
CONCRETE GUTTER, TYPE A (SPECIAL)

SCALE: SHEET NO. 2 OF 3 SHEETS STA. TO STA.

F.A. RTE.	SECTION	COUNTY	TOTAL SHEETS	SHEET NO.
CONTRACT NO.				
ILLINOIS FED. AID PROJECT				



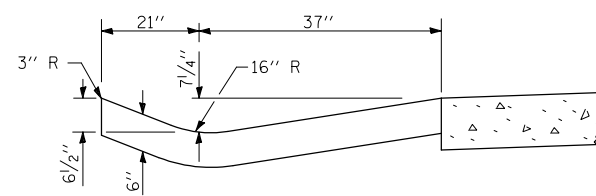
SECTION A-A



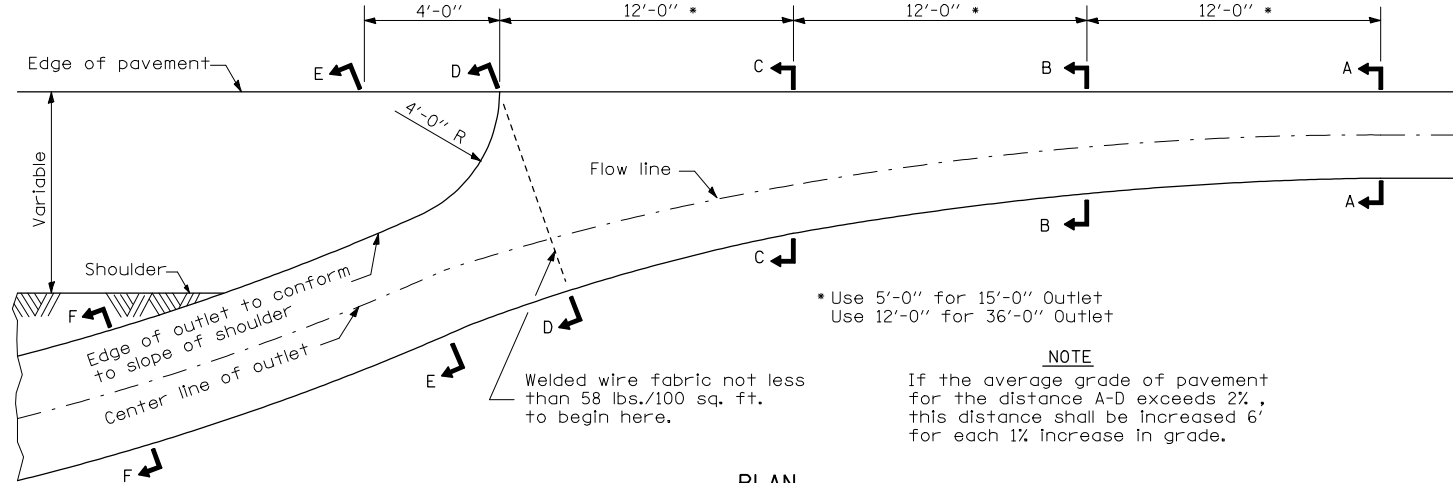
SECTION B-B

QUANTITY

- For 15'-0" Outlet
Section A-A to Section E-E
and Curtain Wall = 1.65 cu. yd. Concrete
Section F-F = 0.079 cu. yd./ft.
- For 36'-0" Outlet
Section A-A to Section E-E
and Curtain Wall = 3.53 cu. yd. Concrete
Section F-F = 0.079 cu. yd./ft.



SECTION C-C

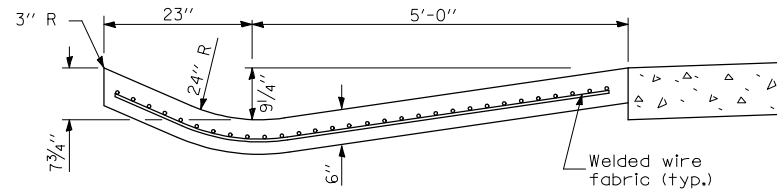


PLAN

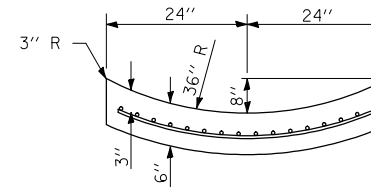
* Use 5'-0" for 15'-0" Outlet
Use 12'-0" for 36'-0" Outlet

NOTE

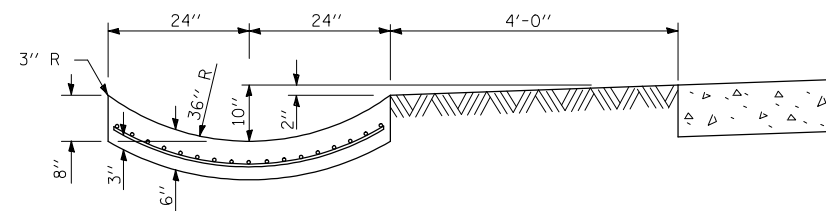
If the average grade of pavement for the distance A-D exceeds 2%, this distance shall be increased 6' for each 1% increase in grade.



SECTION D-D

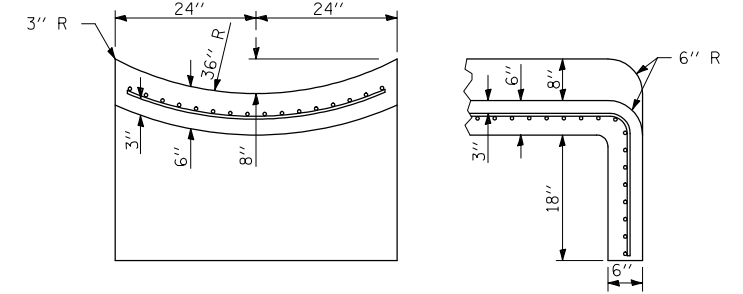


SECTION F-F



SECTION E-E

OUTLET



SECTIONS AT END OF OUTLET

NOTES

This work shall consist of constructing a special Type A concrete gutter as specified herein, at the locations shown on the plans, and in accordance with the applicable portions of Section 606 of the Standard Specifications.

The proposed Concrete Gutter, Type A (Special) shall be constructed with the cross section shown on the details herein. The cross section for the Type A Gutter Special was specifically designed to:

- maximize hydraulic capacity in the gutter section
- minimize the entrance breakover between the Type A Gutter Entrance and the driveway pavement
- improve ride quality through the Type A Gutter Entrance; therefore no changes in the gutter cross section will be allowed. In addition, all joints and reinforcing steel for Concrete Gutter, Type A (Special), shall conform to the details shown herein, the applicable details of Standard 606001, and the applicable portions of Section 606 of the Standard Specifications.

Concrete Gutter, Type A (Special) will be measured for payment in (feet) along the flow line of the gutter. Concrete inlets, entrances, and outlets along the gutter section will be measured for payment in place and the volume of concrete computed in (cubic yards).

This work will be paid for at the contract unit price per foot for CONCRETE GUTTER, TYPE A (SPECIAL) of the dimensions specified. Concrete inlets, entrances, and outlets along the gutter section will be paid for as CLASS SI CONCRETE (OUTLET).

Sub-Base Granular Material, Type B 4" shall be constructed under the Type A Gutter (Special) and Type A Gutter Entrance.

Gutter, gutter inlet, gutter outlet and gutter entrance shall be tied to the P.C.C. pavement at side streets in accordance with details for longitudinal construction joint shown on Standard 420001. Longitudinal joint tie bars shall be No. 6 at 24" centers.

Two 1-1/4" x 18" dowel bars shall be installed in all joints when the gutter is constructed adjacent to flexible pavement.

Note: All dimensions are in INCHES (millimeters) unless otherwise shown.

FILE NAME =	USER NAME = craigre	DESIGNED -	REVISED -
et\p\work\PWIDOT\CRAIGRE\d0101509\60602700.dgn		DRAWN -	REVISED -
		CHECKED -	REVISED -
		DATE -	REVISED -

STATE OF ILLINOIS
DEPARTMENT OF TRANSPORTATION

CONCRETE GUTTER, TYPE A (SPECIAL)

SCALE: SHEET NO. 3 OF 3 SHEETS STA. TO STA.

DISTRICT 5 DETAIL NO. 60602700

F.A. RTE.	SECTION	COUNTY	TOTAL SHEETS	SHEET NO.
				CONTRACT NO.
ILLINOIS FED. AID PROJECT				