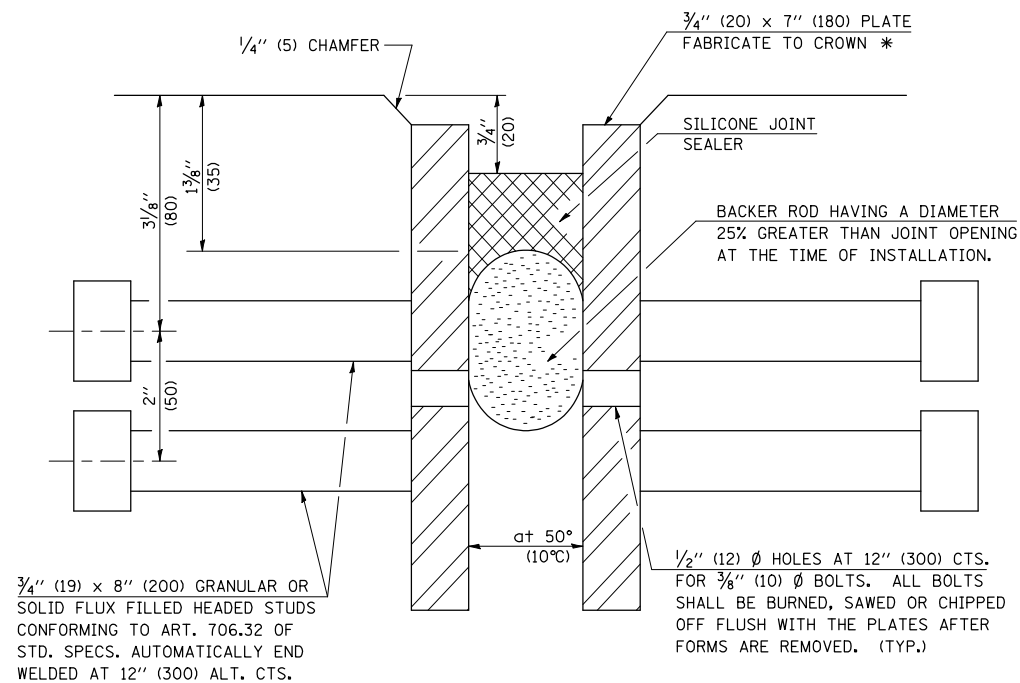


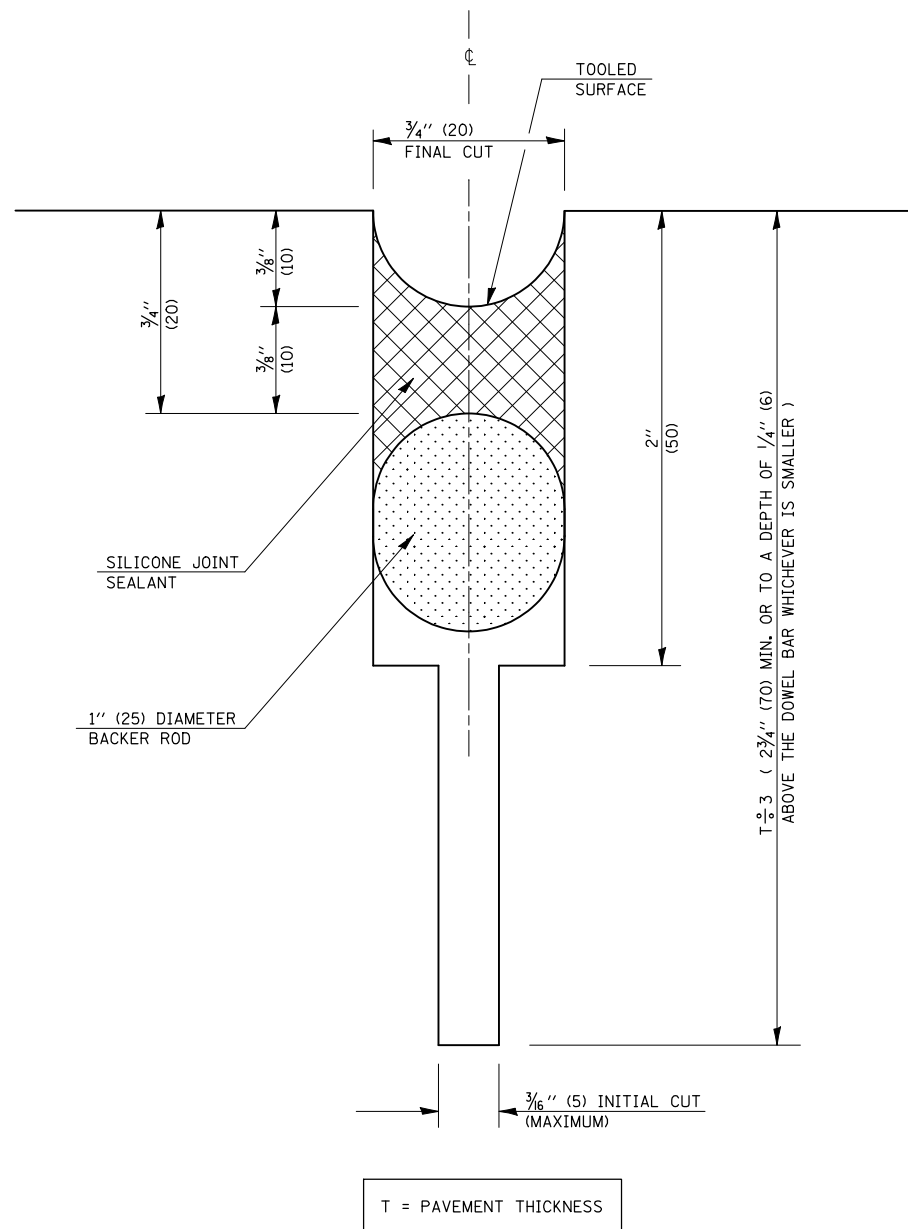
# SILICONE JOINT SEALER

## STEEL DETAILS

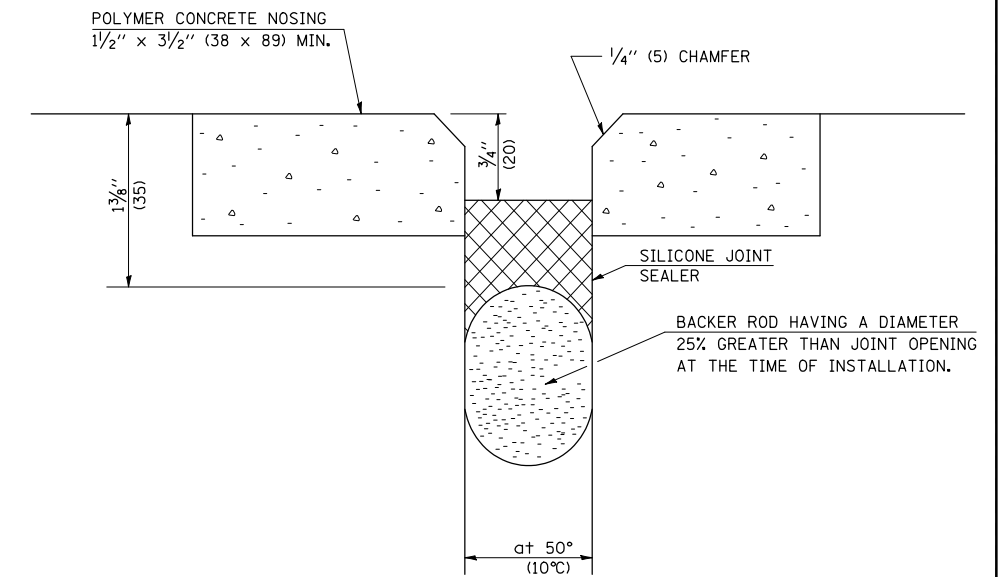


\* FURNISH IN SEGMENTS OF 20 FT. (6 m) MAXIMUM LENGTH. MAXIMUM SPACE BETWEEN INSTALLED SEGMENTS SHALL BE 1/4" (5 mm). SEAL SPACE WITH SILICONE SEALANT SUITABLE FOR STRUCTURAL STEEL.

## PAVEMENT JOINTS



## CONCRETE DETAILS



Note: All dimensions are in INCHES (millimeters) unless otherwise shown.

## DISTRICT 5 DETAIL NO. X0301424

FILE NAME =	USER NAME = craigre	DESIGNED -	REVISED - 12/06
ct\pwwork\pwwid\craigre\d0101509\0301424.dgn		DRAWN -	REVISED -
	PLOT SCALE = 40.000' / IN.	CHECKED -	REVISED -
	PLOT DATE = 1/7/2010	DATE -	REVISED -

STATE OF ILLINOIS  
DEPARTMENT OF TRANSPORTATION

SILICONE JOINT SEALER

SCALE: SHEET NO. OF SHEETS STA. TO STA.

F.A. RTE.	SECTION	COUNTY	TOTAL SHEETS	SHEET NO.
CONTRACT NO.				
FED. ROAD DIST. NO. ILLINOIS FED. AID PROJECT				