

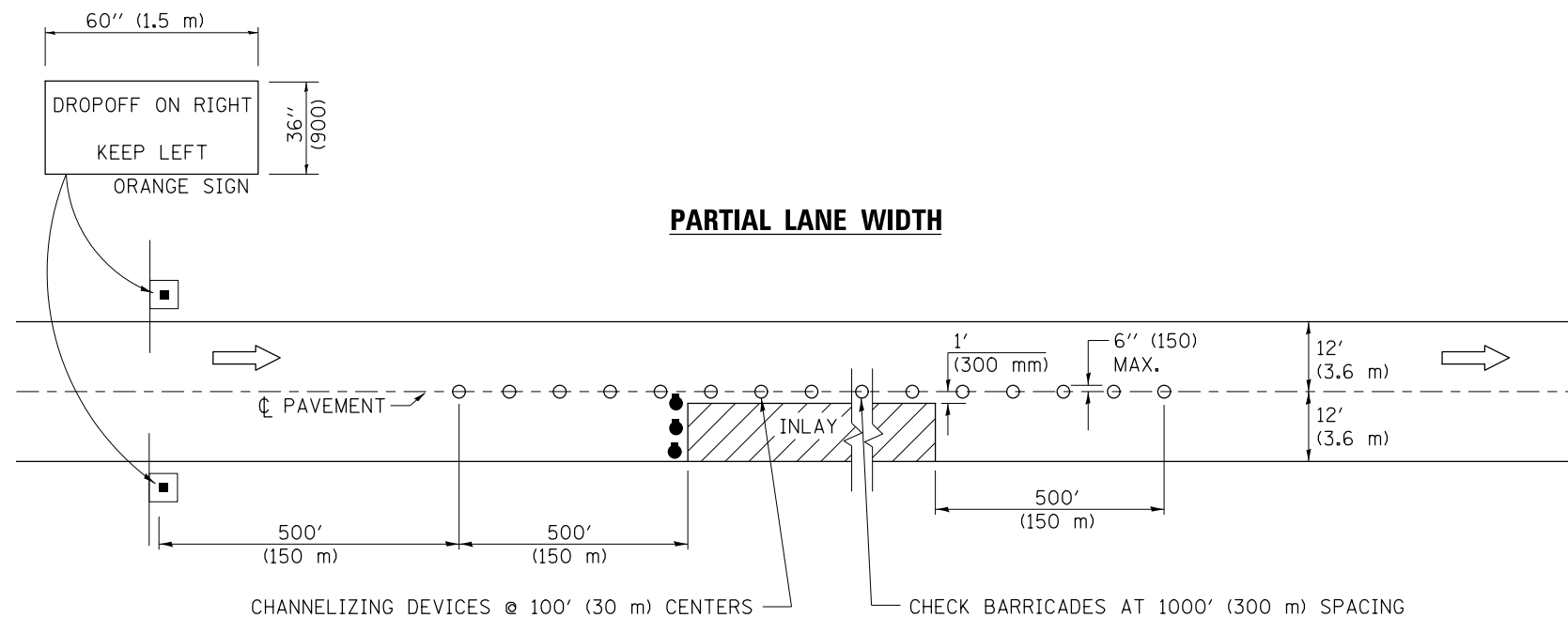
FULL LANE WIDTH

TRAFFIC CONTROL DETAILS NOT SHOWN SHALL BE ACCORDING TO TRAFFIC CONTROL STANDARD 701401.

PASSING LANE CLOSURES SHALL BE SIMILAR. SIGN SHALL READ "DROP OFF ON LEFT, KEEP RIGHT", AND THE TEMPORARY PAVEMENT MARKING LINE 4" (100 mm) SHALL BE A SOLID WHITE LINE.

AT RAMPS, THE INLAY WORK AREA SHALL BE STAGED TO COORDINATE WITH STANDARD 701411. TEMPORARY RAMPS THROUGH THE INLAY AREA TO MAINTAIN RAMP TRAFFIC IN LIEU OF STAGING WILL NOT BE ALLOWED.

**TYPICAL APPLICATIONS
DRIVING LANE INLAY**



PARTIAL LANE WIDTH

TRAFFIC CONTROL DETAILS NOT SHOWN SHALL BE ACCORDING TO TRAFFIC CONTROL STANDARD 701401.

AT RAMPS, THE INLAY WORK AREA SHALL BE STAGED TO COORDINATE WITH STANDARD 701411. TEMPORARY RAMPS THROUGH THE INLAY AREA TO MAINTAIN RAMP TRAFFIC IN LIEU OF STAGING WILL NOT BE ALLOWED.

SYMBOLS	
	DIRECTION OF TRAVEL
	DRUMS WITH FLASHING LIGHTS
	HIGH INTENSITY REFLECTORIZED VERTICAL BARRICADES

Note: All dimensions are in INCHES (millimeters) unless otherwise shown.

DISTRICT 5 DETAIL NO. X7010805

FILE NAME =	USER NAME = ceerlockjd	DESIGNED -	REVISED - 11/06
ce:\pw\work\p\dot\ceerlockjd\0101509\X7010805.dgn		DRAWN -	REVISED - 09/13
	PLOT SCALE = 48.0000' / in.	CHECKED -	REVISED -
	PLOT DATE = 9/26/2013	DATE -	REVISED -

**STATE OF ILLINOIS
DEPARTMENT OF TRANSPORTATION**

TRAFFIC CONTROL AND PROTECTION, STANDARD 701401

SCALE: SHEET NO. OF SHEETS STA. TO STA.

F.A. RTE.	SECTION	COUNTY	TOTAL SHEETS	SHEET NO.
CONTRACT NO.				
FED. ROAD DIST. NO. ILLINOIS FED. AID PROJECT				