

DESIGNER NOTE: INCLUDE SPECIAL PROVISION "TRAFFIC CONTROL AND PROTECTION FOR TEMPORARY DETOUR"

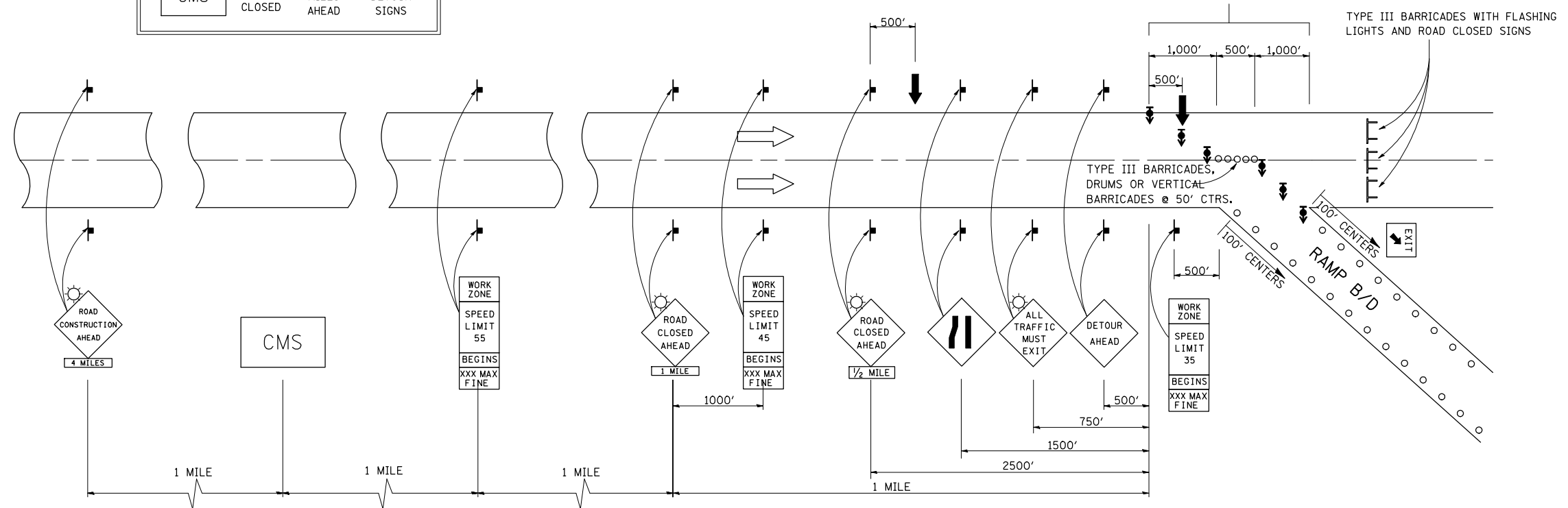
INTERSTATE DETOUR USING ENTRANCE AND EXIT RAMP

DIRECTIONAL BARRICADES WITH STEADY BURNING LIGHTS AT 50' (15 m) CTS. IN TAPER. DRUMS WITH STEADY BURNING LIGHTS IN TANGENT (BETWEEN TAPERS) AT 100' (30 m) CTS.

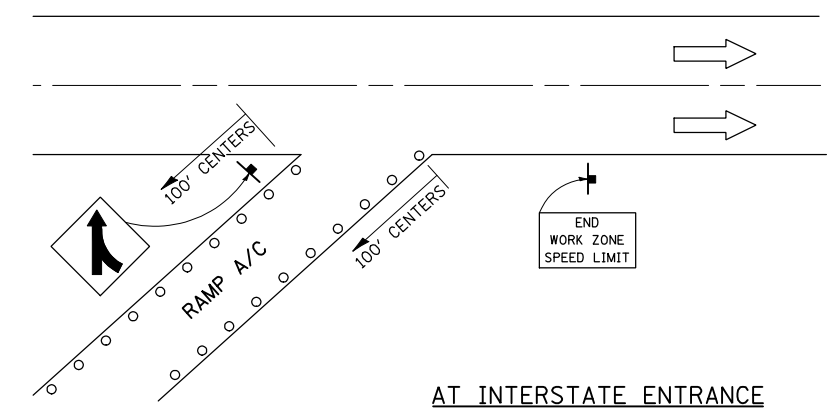
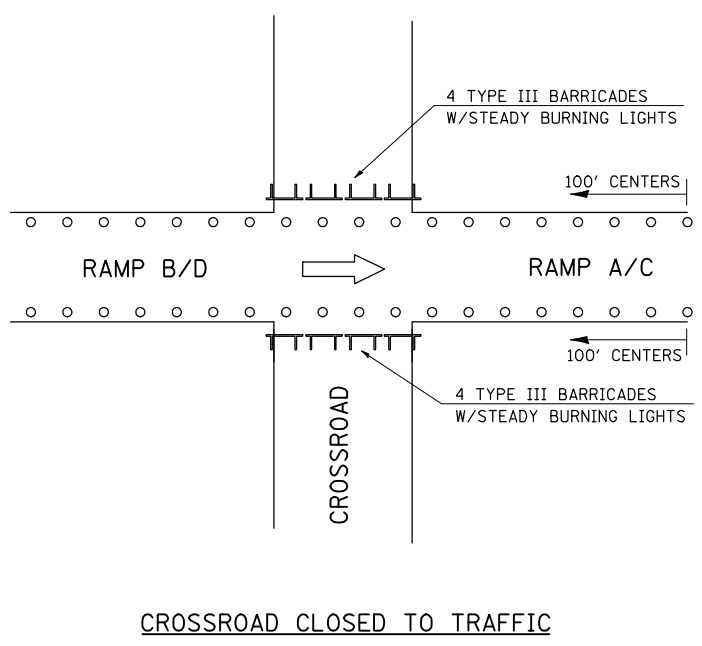
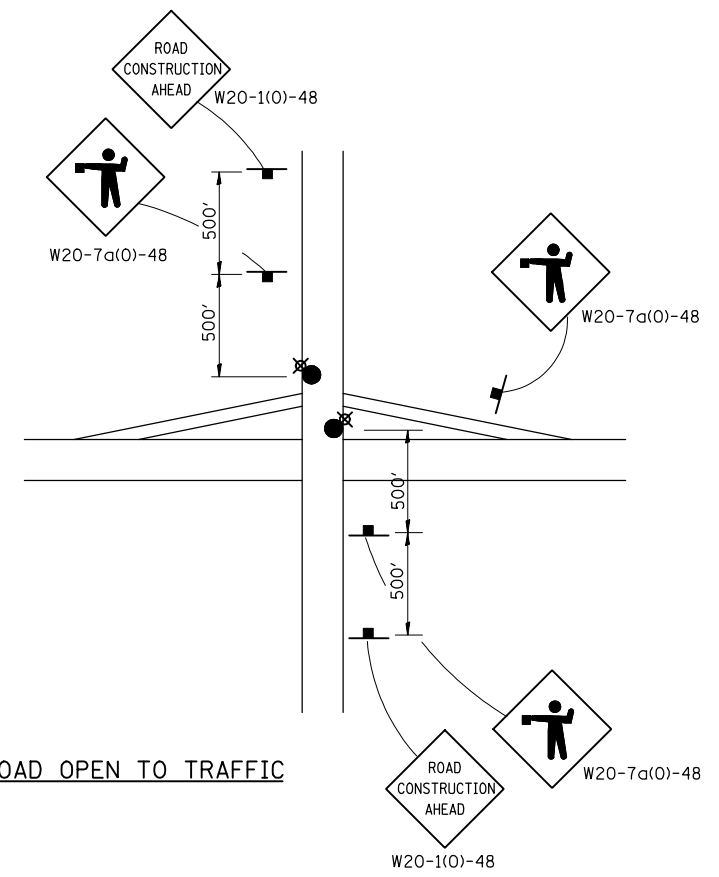
FOR OFF PEAK CLOSURES LESS THAN 24 HOURS, THE TANGENT SECTION MAY BE OMITTED BY APPROVAL OF THE ENGINEER.

A CHANGEABLE MESSAGE SIGN SHALL BE USED IN ADVANCE OF SIGNING TO WARN OF CLOSURE

CMS	ROAD CLOSED	3 MILES AHEAD	FOLLOW DETOUR SIGNS
-----	-------------	---------------	---------------------



SYMBOLS	
	ARROW BOARD
	SIGN
	DRUM W/STEADY BURNING LIGHT
	TYPE III BARRICADE
	DIRECTIONAL BARRICADE W/STEADY BURNING LIGHT
	LIGHTED FLAGGER STATIONS



CROSSROAD OPEN TO TRAFFIC

CROSSROAD CLOSED TO TRAFFIC

AT INTERSTATE ENTRANCE

Note: All dimensions are in INCHES (millimeters) unless otherwise shown.

DISTRICT 5 DETAIL NO. X7011005

FILE NAME =	USER NAME = craige	DESIGNED -	REVISED - 12/06
et\pw\work\PWIDOT\CRAIGRE\d0101509\X7011005.dgn		DRAWN -	REVISED -
PLOT SCALE = 40.0000' / IN.		CHECKED -	REVISED -
PLOT DATE = 1/7/2010		DATE -	REVISED -

**STATE OF ILLINOIS
DEPARTMENT OF TRANSPORTATION**

TRAFFIC CONTROL & PROTECTION FOR TEMPORARY DETOUR

SCALE:	SHEET NO.	OF SHEETS	STA.	TO STA.
--------	-----------	-----------	------	---------

F.A. RTE.	SECTION	COUNTY	TOTAL SHEETS	SHEET NO.
CONTRACT NO.				
FED. ROAD DIST. NO. ILLINOIS FED. AID PROJECT				