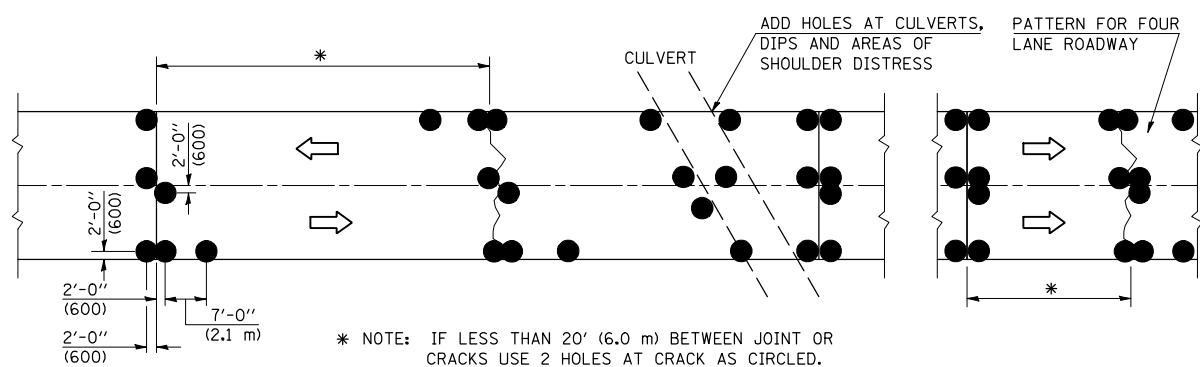
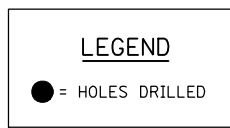
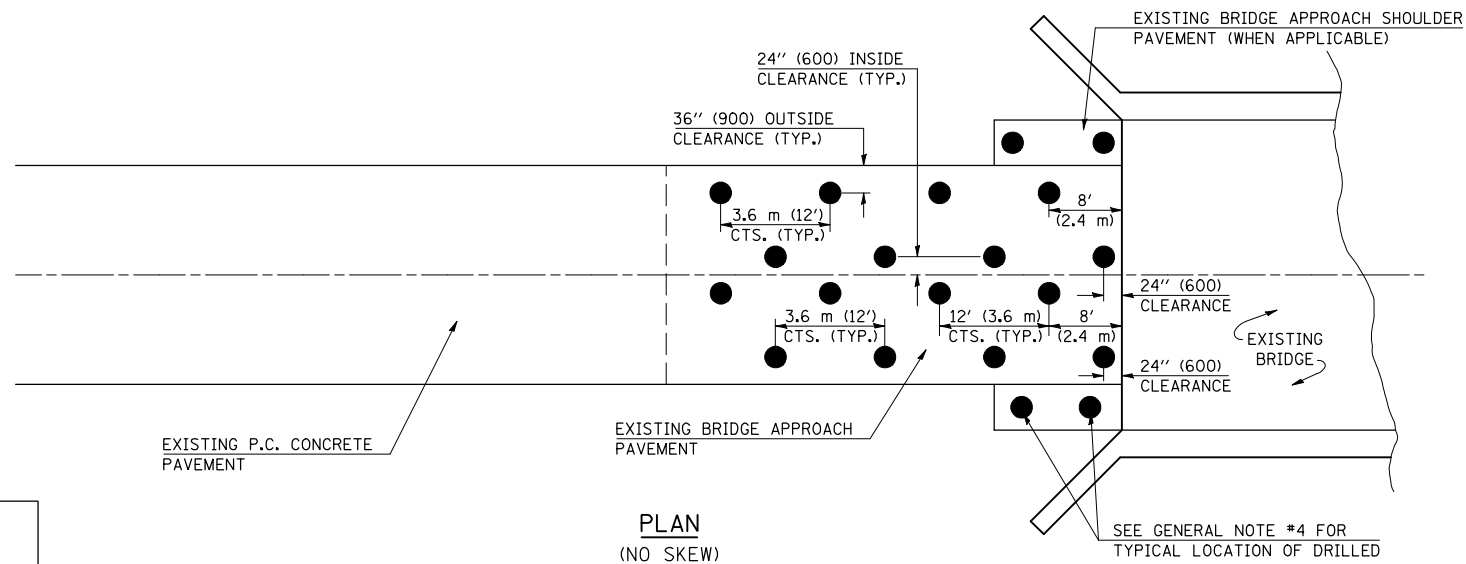


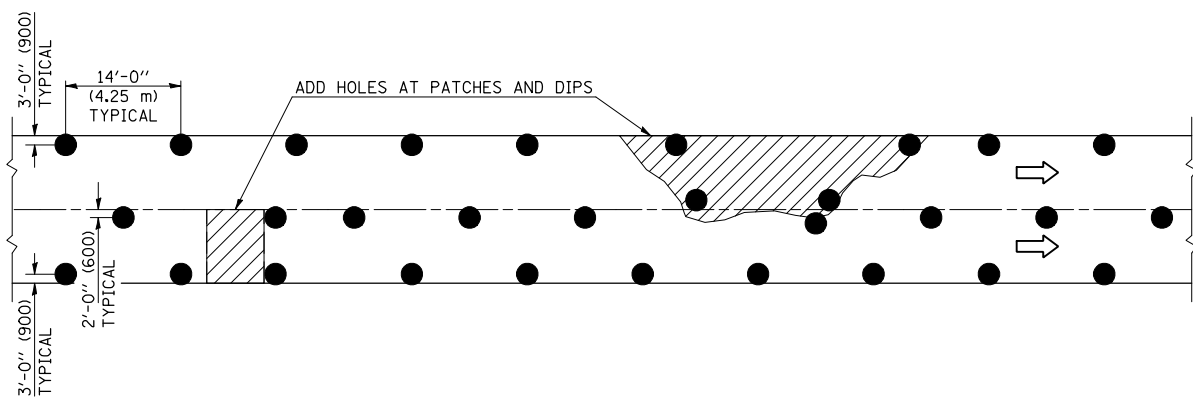
TYPICAL HOLE PATTERN FOR REINFORCED JOINTED PAVEMENTS



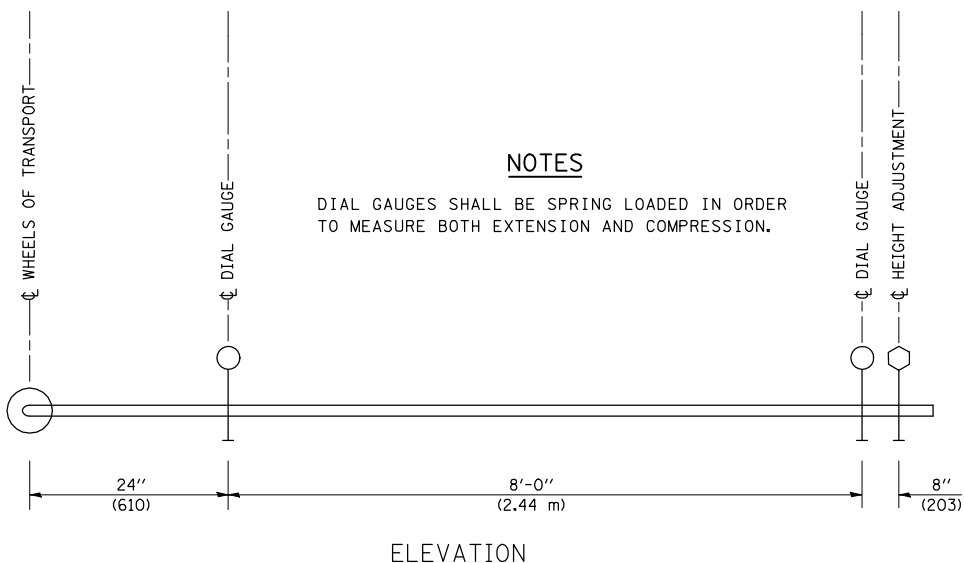
TYPICAL HOLE PATTERN FOR BRIDGE APPROACHES



TYPICAL HOLE PATTERN FOR CONTINUOUSLY REINFORCED PAVEMENT

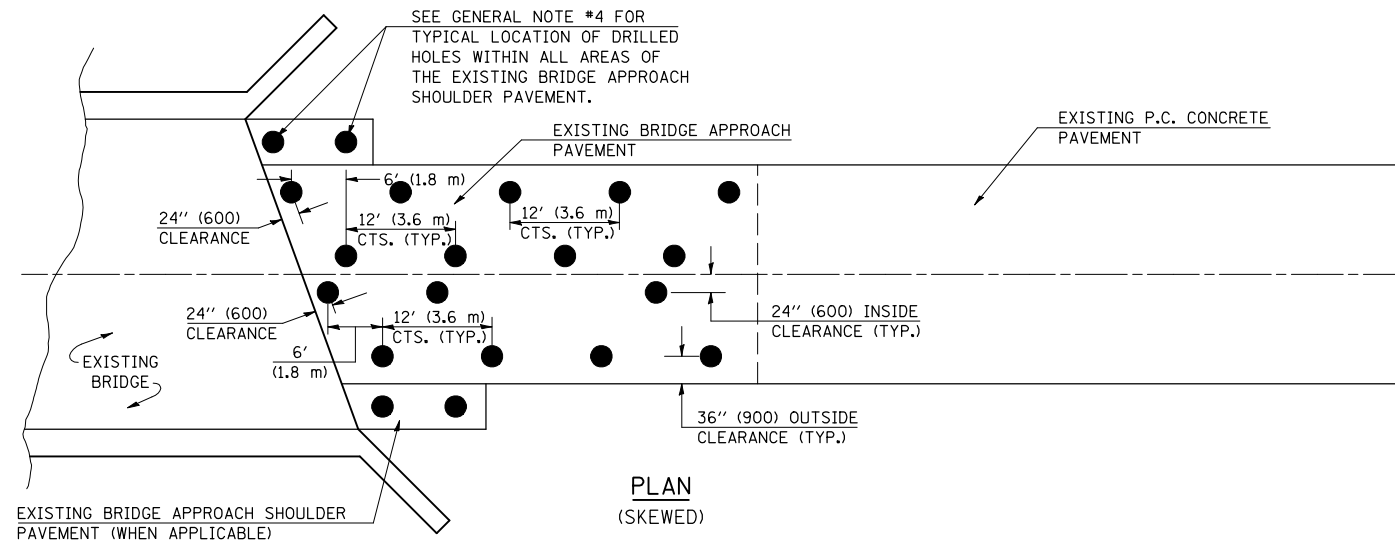


SLAB MOVEMENT DETECTION DEVICE



NOTES

DIAL GAUGES SHALL BE SPRING LOADED IN ORDER TO MEASURE BOTH EXTENSION AND COMPRESSION.



GENERAL NOTES

1. UNLESS OTHERWISE SPECIFIED, ALL WORK SHALL BE DONE UTILIZING STAGE CONSTRUCTION.
2. THE PATTERNS FOR THE DRILLED HOLES, AS SHOWN ABOVE, SHALL BE FOLLOWED AS CLOSELY AS POSSIBLE. BEFORE A PATTERN CHANGE IS ALLOWED, THE CONTRACTOR SHALL SUBMIT A REQUEST IN WRITING AND IT MUST BE APPROVED BY THE ENGINEER.
3. SEE SCHEDULES FOR LOCATIONS AND ESTIMATED QUANTITIES.
4. THESE DRILLED HOLES SHALL BE PLACED MIDWAY FROM THE OUTER EDGES AND SHALL BE ON 8' (2.4 m) CENTERS UNLESS OTHERWISE SHOWN IN THE PLANS.

Note: All dimensions are in INCHES (millimeters) unless otherwise shown.

DISTRICT 5 DETAIL NO. Z0019300

FILE NAME =	USER NAME = craigre	DESIGNED -	REVISED - 12/06
et:\pw\work\PIWIDOT\CRAIGRE\d0101509\z0019300.dgn		DRAWN -	REVISED -
		CHECKED -	REVISED -
		DATE -	REVISED -

**STATE OF ILLINOIS
DEPARTMENT OF TRANSPORTATION**

SUBSEALING OF CONCRETE PAVEMENTS

SCALE: SHEET NO. OF SHEETS STA. TO STA.

F.A. RTE.	SECTION	COUNTY	TOTAL SHEETS	SHEET NO.
CONTRACT NO.				
FED. ROAD DIST. NO. ILLINOIS FED. AID PROJECT				

DESIGNER NOTE: FOR USE WITH CHECK SHEET NO. 12