

F.A.I. RTE.	SECTION	COUNTY	TOTAL SHEETS	SHEET NO.
74	D5 WIM 2020-1	VERMILION	22	1
		ILLINOIS	CONTRACT NO. 70E09	

FOR INDEX OF SHEETS, SEE SHEET NO. 2
FOR SUMMARY OF QUANTITIES, SEE SHEET NOS. 3-4

CURRENT TRAFFIC DATA

F.A.I. 74 / (I-74)

2019 ADT = 13,200 (WB)
P.V. % = 70.1
S.U. % = 3.4
M.U. % = 26.5

TRUCK RTE. = CLASS 1
N.H.S. RTE. = YES

DESIGN DESIGNATION

INTERSTATE

TOWNSHIP

OAKWOOD



FULL SIZE PLANS HAVE BEEN PREPARED USING STANDARD ENGINEERING SCALES. REDUCED SIZED PLANS WILL NOT CONFORM TO STANDARD SCALES. IN MAKING MEASUREMENTS ON REDUCED PLANS, THE ABOVE SCALES MAY BE USED.

J.U.L.L.E.
JOINT UTILITY LOCATION INFORMATION FOR EXCAVATORS
1-800-892-0123
OR 811

PROJECT ENGINEER: JASON STULTS, P.E.
SQUAD LEADER: GREG EAGLIN
DESIGNER: JASON GOBLE
PHONE NUMBER: (217)465-4181

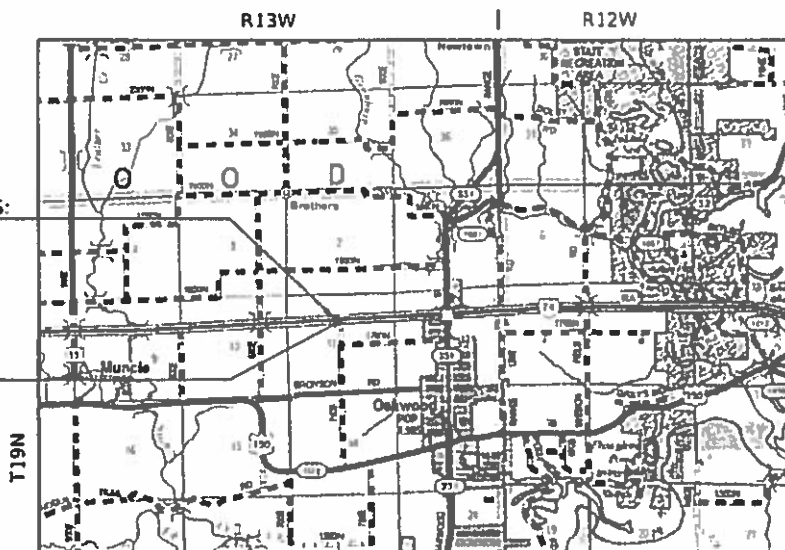
CONTRACT NO. 70E09

**PROPOSED
HIGHWAY PLANS**

F.A.I. ROUTE 74 (I-74)
SECTION D5 WIM 2020-1
PROJECT STP-8EKK(831)
MISCELLANEOUS
VERMILION COUNTY

C-95-058-19

VIRTUAL WEIGH STATION
1.0 MI. WEST OF OAKWOOD INTERCHANGE



SECTION D5 WIM 2020-1 BEGINS:
STA. 1451+60 (WB)

SECTION D5 WIM 2020-1 ENDS:
STA. 1453+53 (WB)



GROSS LENGTH = 193.00 FT. = 0.036 MILE
NET LENGTH = 193.00 FT. = 0.036 MILE

D-95-044-19



LOCATION OF SECTION INDICATED THUS: - [shaded box] -

STATE OF ILLINOIS
DEPARTMENT OF TRANSPORTATION

SUBMITTED 08/13 2019
Kenil A. Garnettson REGIONAL ENGINEER
Oct 4 2019 E.A. Etk

Oct 4 2019
Paul P. Chaf
DIRECTOR OF HIGHWAYS PROJECT IMPLEMENTATION

PRINTED BY THE AUTHORITY
OF THE STATE OF ILLINOIS

INDEX OF SHEETS

1	COVER SHEET
2	INDEX OF SHEETS
2	LIST OF HIGHWAY STANDARDS
2	GENERAL NOTES
2	COMMITMENTS
3-4	SUMMARY OF QUANTITIES
5	EXISTING TYPICAL SECTION
6	MISC. EXISTING TYPICAL CROSS SECTION DETAILS
7	SCHEDULE OF QUANTITIES
8	PLAN SHEET
9	EROSION CONTROL PLAN
10-22	WEIGH IN MOTION DETAILS

LIST OF HIGHWAY STANDARDS

000001-07	STANDARD SYMBOLS, ABBREVIATIONS AND PATTERNS
001001-02	AREAS OF REINFORCEMENT BARS
001006	DECIMAL OF AN INCH AND OF A FOOT
280001-07	TEMPORARY EROSION CONTROL SYSTEMS
601001-05	PIPE UNDERDRAINS
601101-02	CONCRETE HEADWALL FOR PIPE UNDERDRAINS
701101-05	OFF-RD OPERATIONS, MULTILANE, 15' TO 24' FROM PAVEMENT EDGE
701106-02	OFF-RD OPERATIONS, MULTILANE, MORE THAN 15' AWAY
701400-09	APPROACH TO LANE CLOSURE, FREEWAY / EXPRESSWAY
701401-12	LANE CLOSURE, FREEWAY / EXPRESSWAY
701428-01	TRAFFIC CONTROL SETUP AND REMOVAL FREEWAY / EXPRESSWAY
701901-08	TRAFFIC CONTROL DEVICES
805001-01	ELECTRICAL SERVICE INSTALLATION DETAILS
814001-03	HANDHOLES
838001-01	BREAKAWAY DEVICES
878001-10	CONCRETE FOUNDATION DETAILS
886001-01	DETECTOR LOOP INSTALLATIONS

GENERAL NOTES

G.N.-100A
ELECTRONIC FILES AND/OR ELECTRONIC SURVEY INFORMATION INCLUDING CADD FILES WILL NOT BE AVAILABLE TO THE CONTRACTOR.

G.N.-105.09A
ALL ELEVATIONS SHOWN IN THE PLANS ARE BASED ON NORTH AMERICAN VERTICAL DATUM OF 1988. (NAVD 88)

COMMITMENTS

NO COMMITMENTS HAVE BEEN MADE FOR THIS PROJECT.

MODEL: I:\MODEL\NAMES
FILE: N:\MIS: P:\pub\mcom\ma\data\illinois\pwr\DOT\Documents\DOT_Offices\District_5\Projects\0570E09\CADDData\CAD\SheetSet\0570E09-shc-Cen\table.dgn

USER NAME = GobleJR	DESIGNED - JRG	REVISED -
	DRAWN - JRG	REVISED -
PLOT SCALE = 40.0000 ' / in.	CHECKED -	REVISED -
PLOT DATE = 8/13/2019	DATE -	REVISED -

STATE OF ILLINOIS
DEPARTMENT OF TRANSPORTATION

INDEX OF SHEETS, HIGHWAY STANDARDS,
GENERAL NOTES, COMMITMENTS

SCALE: N-T-S SHEET 1 OF 1 SHEETS STA. TO STA.

F.A.I. RTE.	SECTION	COUNTY	TOTAL SHEETS	SHEET NO.
74	D5 WIM 2020-1	VERMILION	22	2
CONTRACT NO. 70E09			ILLINOIS FED. AID PROJECT	

SUMMARY OF QUANTITIES

LOCATION OF WORK: FAI 74 (I-74)
 RURAL
 INTERSTATE
 STA. 1451+60 TO STA. 1453+53
 VERMILION COUNTY

FUNDING BREAKOUT: 80% FEDERAL / 20% STATE

CONSTRUCTION TYPE CODE: 0044

	CODE NO.	ITEM	UNIT	TOTAL QUANTITY
	20400800	FURNISHED EXCAVATION	CU YD	380.0
	25000210	SEEDING, CLASS 2A	ACRE	0.25
	25000400	NITROGEN FERTILIZER NUTRIENT	POUND	23.0
	25000500	PHOSPHORUS FERTILIZER NUTRIENT	POUND	23.0
	25000600	POTASSIUM FERTILIZER NUTRIENT	POUND	23.0
	25100115	MULCH, METHOD 2	ACRE	0.25
	25100630	EROSION CONTROL BLANKET	SQ YD	4.0
	280000250	TEMPORARY EROSION CONTROL SEEDING	POUND	25.0
	28000400	PERIMETER EROSION BARRIER	FOOT	213.0
	60100060	CONCRETE HEADWALLS FOR PIPE DRAINS	EACH	1.0
	60108100	PIPE UNDERDRAINS 4" (SPECIAL)	FOOT	12.0
	67100100	MOBILIZATION	L SUM	1.0
	70100800	TRAFFIC CONTROL AND PROTECTION, STANDARD 701401	L SUM	1.0
	70107025	CHANGEABLE MESSAGE SIGN	CAL DA	6.0
	* SPECIALTY ITEM			

MODEL: \\MODELNAME\$
 FILE: NAME: P:\Upstream\dot.illinois.gov\PIWDOT\Documents\DOT_Offices\District_5\Projects\D570E09\CADDData\CAD\Sheet\0570E09-sh-500.dgn

USER NAME = GobleJR	DESIGNED - JRG	REVISED -
	DRAWN - JRG	REVISED -
PLOT SCALE = 40.0000' / in.	CHECKED -	REVISED -
PLOT DATE = 8/13/2019	DATE -	REVISED -

**STATE OF ILLINOIS
DEPARTMENT OF TRANSPORTATION**

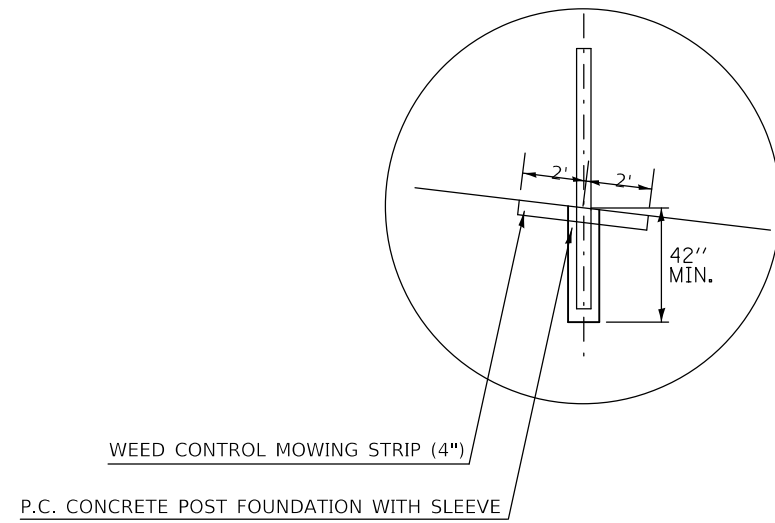
SUMMARY OF QUANTITIES

SCALE: N-T-S SHEET 1 OF 2 SHEETS STA. TO STA.

F.A.I. RTE.	SECTION	COUNTY	TOTAL SHEETS	SHEET NO.
74	D5 WIM 2020-1	VERMILION	22	3
			CONTRACT NO. 70E09	
ILLINOIS FED. AID PROJECT				

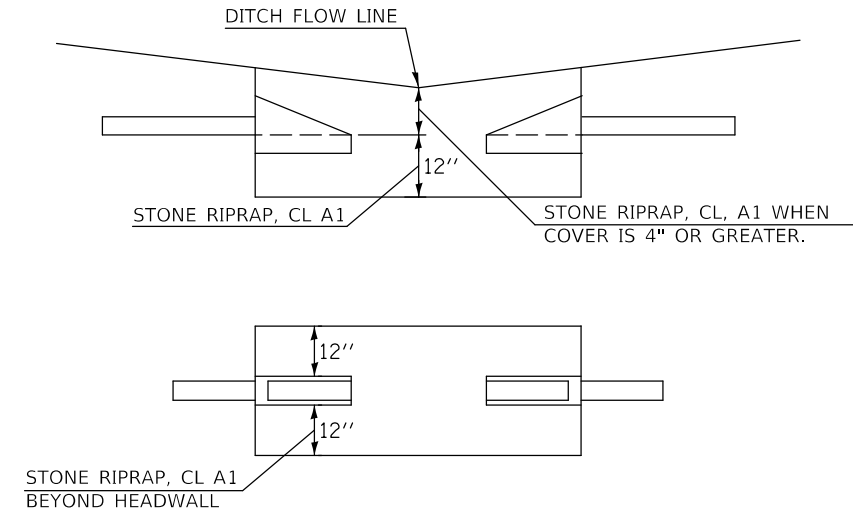
MISC. EXISTING TYPICAL CROSS SECTION DETAILS

DETAIL "A" HIGH TENSION CABLE BARRIER



STA. 1451+60 TO STA. 1453+53

DETAIL "B" UNDERDRAIN OUTLET BELOW DITCH GRADE TYPICAL DETAIL



FILE NAME = p:\planning\com\dots\11\mots\gov\PM\DOT\Documents\1\DOT 0\Files\District 5\Projects\0570E09\CADD\05\CAD\05\0570E09-01-1\typical.dgn

\$MODELNAME\$

USER NAME = GobleJR	DESIGNED JRG	REVISED -
	DRAWN JRG	REVISED -
PLOT SCALE = 40.0000' / in.	CHECKED -	REVISED -
PLOT DATE = 8/13/2019	DATE -	REVISED -

STATE OF ILLINOIS
DEPARTMENT OF TRANSPORTATION

MISC. EXISTING TYPICAL CROSS SECTION DETAILS

SCALE: SHEET 1 OF 1 SHEETS STA. TO STA.

F.A.I. RTE.	SECTION	COUNTY	TOTAL SHEETS	SHEET NO.
74	D5 WIM 2020-1	VERMILION	22	6
CONTRACT NO. 70E09				
ILLINOIS FED. AID PROJECT				

FURNISHED EXCAVATION SCHEDULE

				20400800	
LOCATION	STATION	TO	STATION	FURNISHED EXCAVATION	
				(CU YD)	
W.B.	D.L. SHLDR		1451+60.42	1452+12.42	86.67
W.B.	D.L. SHLDR		1452+12.42	1452+74.42	120.00
W.B.	D.L. SHLDR		1452+74.42	1453+78.42	173.33
				TOTAL =	380.00
				USE =	380.00
					CU YD

25100630 EROSION CONTROL BLANKET

LOCATION	STATION	OFFSET	QUANTITY (SQ YD)
FS DITCH	1453+34	LT. 67.15	4.0
			TOTAL =
			4.0
			SQ YD

SEEDING SCHEDULE

LOCATION	STATION	TO	STATION	AREA (SQ FT)	25000210	28000250	25000400	25000500	25000600	25100115	
					SEEDING CLASS 2A (ACRE)	TEMPORARY EROSION CONTROL SEEDING 100 LB/ACRE (POUND)	NITROGEN FERTILIZER NUTRIENT 90 LB / ACRE (POUND)	PHOSPHORUS FERTILIZER NUTRIENT 90 LB / ACRE (POUND)	POTASSIUM FERTILIZER NUTRIENT 90 LB / ACRE (POUND)	MULCH METHOD 2 (ACRE)	
W.B	D.L. DITCH		1451+30	1453+90	2760.00	0.063	6.34	5.70	5.70	5.70	0.063
					TOTAL =	0.063	6.34	5.70	5.70	5.70	0.063
					USE =	0.250	25.00	23.00	23.00	23.00	0.250
						ACRE	POUND	POUND	POUND	POUND	ACRE

28000400 PERIMETER EROSION BARRIER

LOCATION	STATION	TO	LOCATION	STATION	OFFSET (FT)	QUANTITY (FT)	
WB DL ROW	1451+50.00		WB DL ROW	1453+63.00	99 LT.	213.0	
						TOTAL =	213.0
							FT

60108100 PIPE UNDERDRAINS 4" (SPECIAL)

60100060 CONCRETE HEADWALLS FOR PIPE DRAINS

LOCATION		STATION	60108100 PIPE UNDERDRAIN 4" (SPECIAL) (FT)	60100060 CONC HDWL FOR PIPE DRAIN (EACH)
WB DL	FRONT SLOPE DITCH	1453+30	12.0	1.0
			TOTAL =	12.0
			FT	EACH

MODEL: I:\MODEL\NAME\...
 FILE: NAME: ...
 PROJECT: ...
 OFFICE: ...
 DATE: ...

USER NAME = GobleJR	DESIGNED - JRG	REVISED -
	DRAWN - JRG	REVISED -
PLOT SCALE = 40.0000 ' / in.	CHECKED -	REVISED -
PLOT DATE = 8/13/2019	DATE -	REVISED -

**STATE OF ILLINOIS
DEPARTMENT OF TRANSPORTATION**

SCHEDULE OF QUANTITIES

SCALE: N-T-S SHEET 1 OF 1 SHEETS STA. TO STA.

F.A.I. RTE.	SECTION	COUNTY	TOTAL SHEETS	SHEET NO.
74	D5 WIM 2020-1	VERMILION	22	7
CONTRACT NO. 70E09				
ILLINOIS FED. AID PROJECT				

NOTE: PROPOSED ABOVE GROUND STRUCTURES SHALL HAVE FRONT FACE LOCATED A MINIMUM OF 30' FROM EDGE OF TRAVELED WAY / (EDGE OF PAVEMENT). (TO BE FIELD LOCATED BY THE DEPARTMENT)

SEE SITE LAYOUT DETAIL SHEET FOR ADDITIONAL LAYOUT DIMENSIONS

23 LF 2½" PVC UNDERGROUND CONDUIT AND 2-12/C, 1-12/C GROUND ELECTRIC CABLE

UG METER SERVICE / LOAD CENTER WITH SURGE PROTECTION STA. 1452+16.7 LT.

SIDE VIEW CAMERA POLE WITH ILLUMINATOR STA. 1452+25.80 76.2 LT.

SEC. 11, R. 12 W., T. 19 N., 2ND P.M. VERMILION COUNTY

CABINET WITH WIM ELECTRONICS STA. 1452+34.23 77.2 LT.

135 LF 2½" PVC UNDERGROUND CONDUIT AND 3-1/C NO. 2 ELECTRIC CABLE

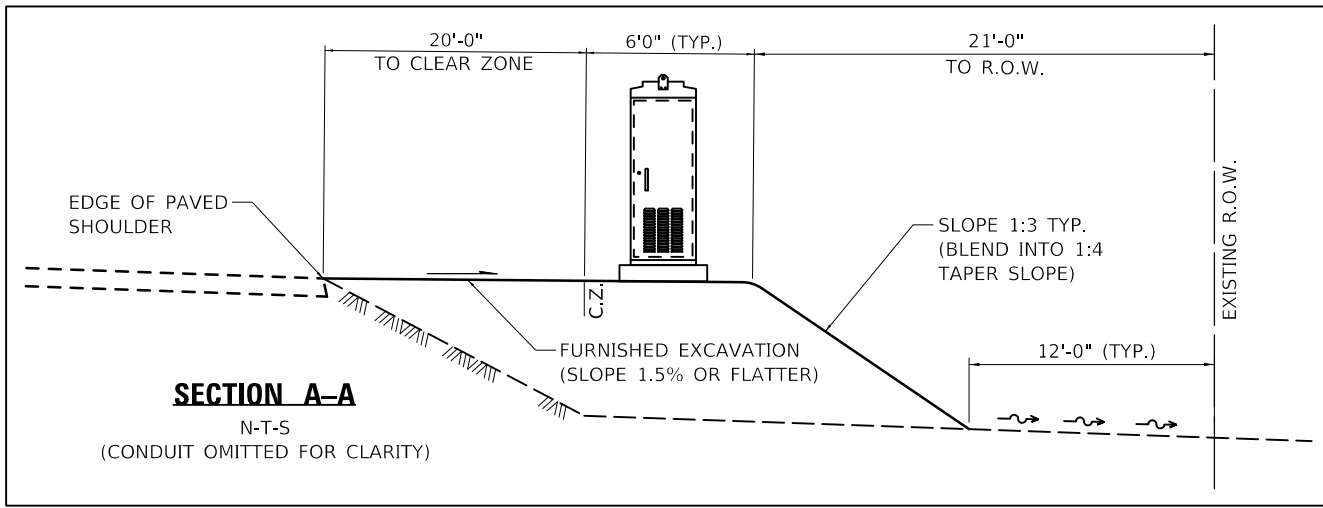
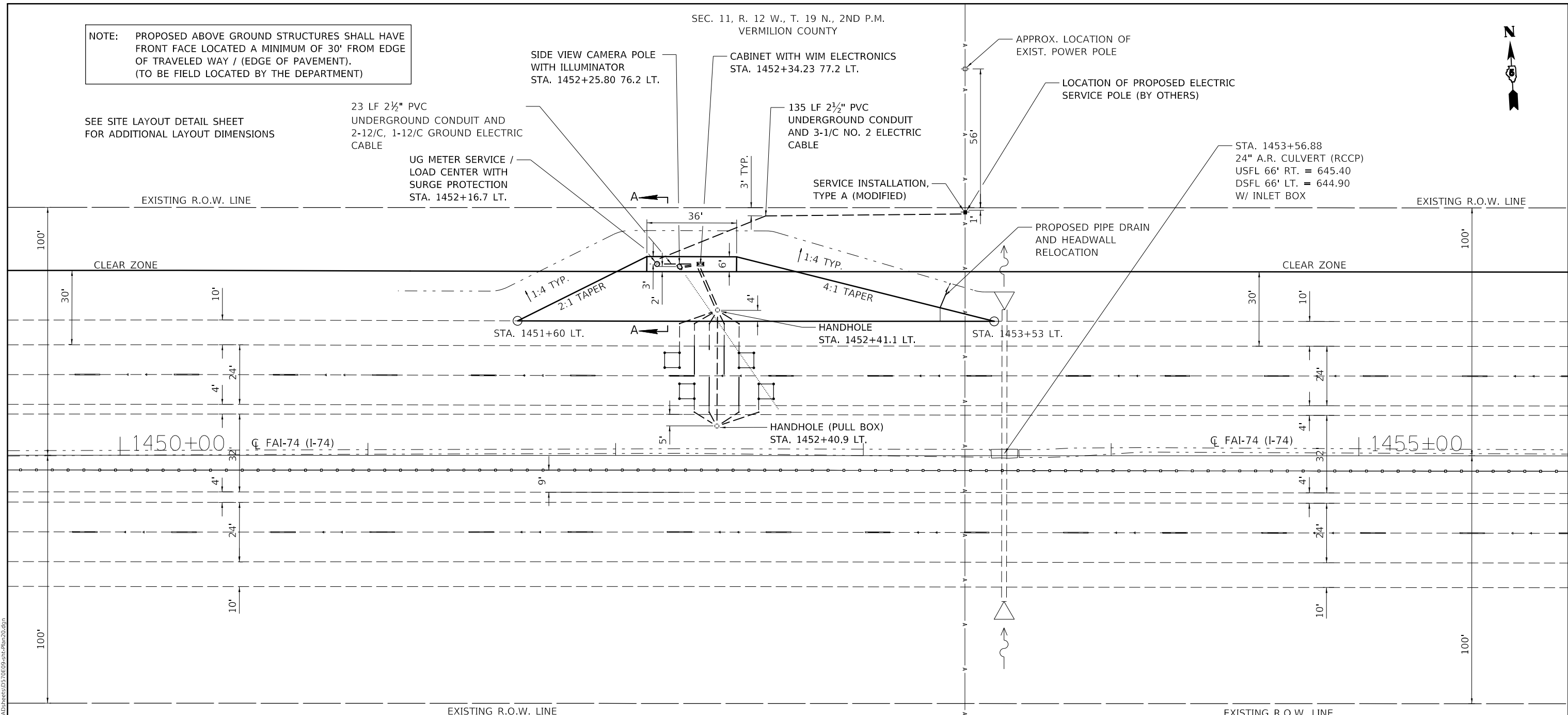
SERVICE INSTALLATION, TYPE A (MODIFIED)

APPROX. LOCATION OF EXIST. POWER POLE

LOCATION OF PROPOSED ELECTRIC SERVICE POLE (BY OTHERS)

STA. 1453+56.88
24" A.R. CULVERT (RCCP)
USFL 66' RT. = 645.40
DSFL 66' LT. = 644.90
W/ INLET BOX

PROPOSED PIPE DRAIN AND HEADWALL RELOCATION



NOTE: ALL EXISTING SOIL DISTURBED BY CONTRACTOR TO REMAIN ON STATE RIGHT-OF-WAY.

USER NAME = GobleJR	DESIGNED - JRG	REVISED -
	DRAWN - JRG	REVISED -
PLOT SCALE = 40,0000' / in.	CHECKED -	REVISED -
PLOT DATE = 8/13/2019	DATE -	REVISED -

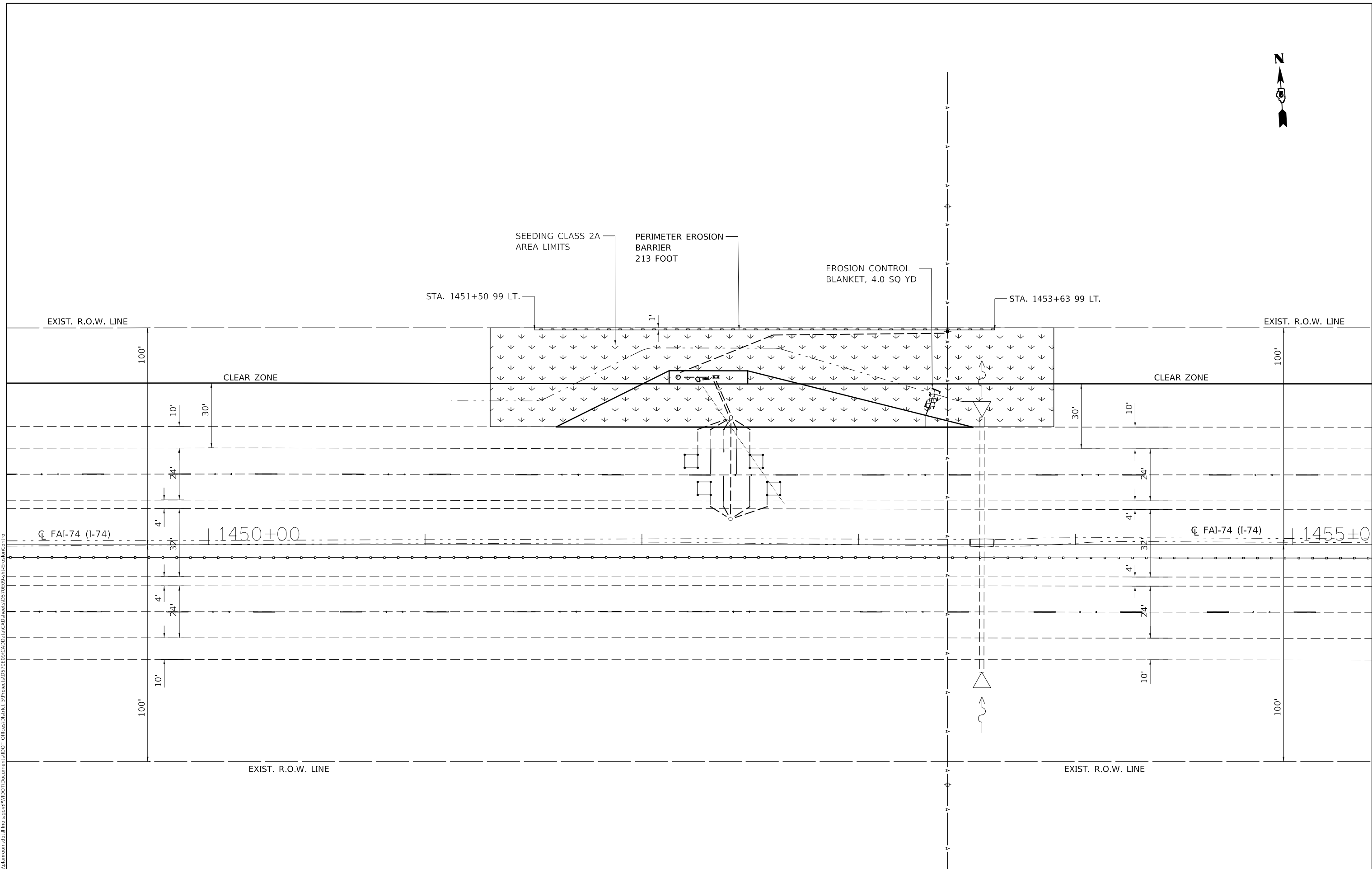
STATE OF ILLINOIS
DEPARTMENT OF TRANSPORTATION

PLAN SHEET

SCALE: 1" = 20' SHEET 1 OF 1 SHEETS STA. 1449+54.52 TO STA. 1455+84.51

F.A.I. RTE.	SECTION	COUNTY	TOTAL SHEETS	SHEET NO.
74	D5 WIM 2020-1	VERMILION	22	8
CONTRACT NO. 70E09				
ILLINOIS FED. AID PROJECT				

MODEL: \\MODEL\MAR\F... FILE NAME: P:\p\70e09\09\70E09\Drawings\DOT_Offices\Drawings\Projects\DOT\Projects\70E09\CADDData\CADD\Sheet\70E09-8-Plan20.dgn



MODEL: s:\MODEL\MHFE
 FILE: MHFE.dwg
 PROJECT: 70E09
 DRAWING: EROSION CONTROL

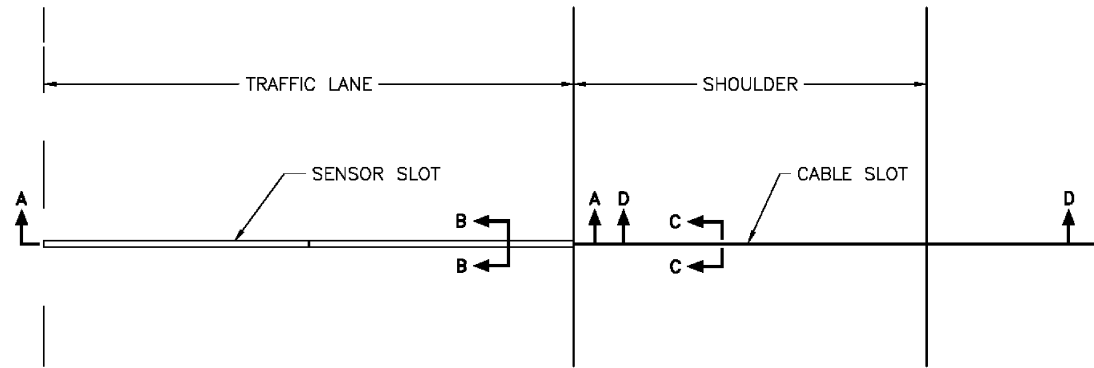
USER NAME = GobleJR	DESIGNED - JRG	REVISED -
DRAWN - JRG	REVISIONS -	
PLOT SCALE = 40.0000' / in.	CHECKED -	REVISED -
PLOT DATE = 8/13/2019	DATE -	REVISED -

STATE OF ILLINOIS
DEPARTMENT OF TRANSPORTATION

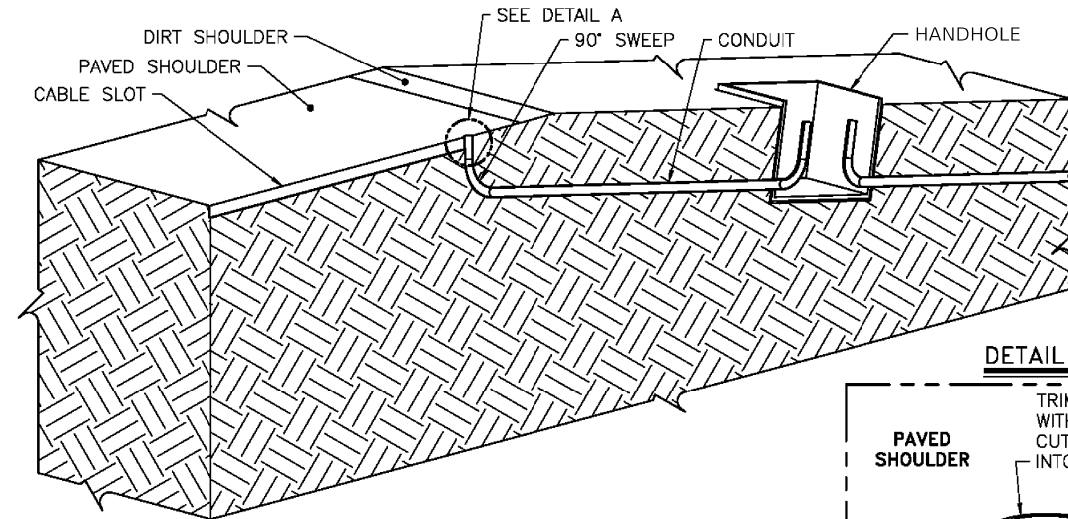
EROSION CONTROL PLAN
 SCALE: 1" = 20' SHEET 1 OF 1 SHEETS STA. 1449+06.9 TO STA. 1455+36.89

F.A.I. RTE.	SECTION	COUNTY	TOTAL SHEETS	SHEET NO.
74	D5 WIM 2020-1	VERMILION	22	9
CONTRACT NO. 70E09				
ILLINOIS FED. AID PROJECT				

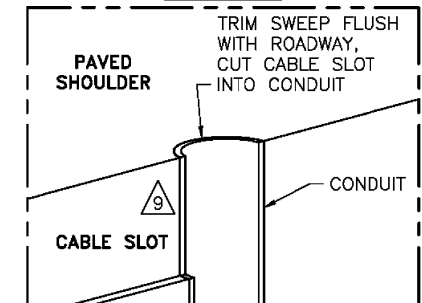
PLAN VIEW - SENSOR INSTALLATION



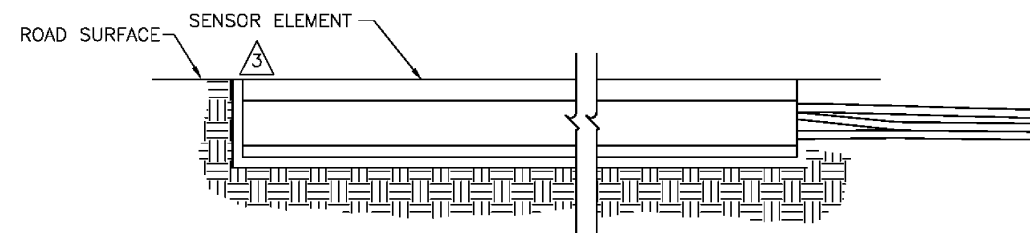
SECTION D-D (CABLE ROUTING DETAILS)



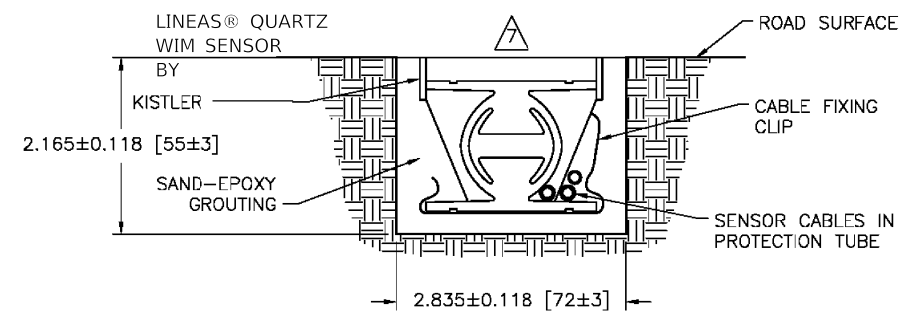
DETAIL A



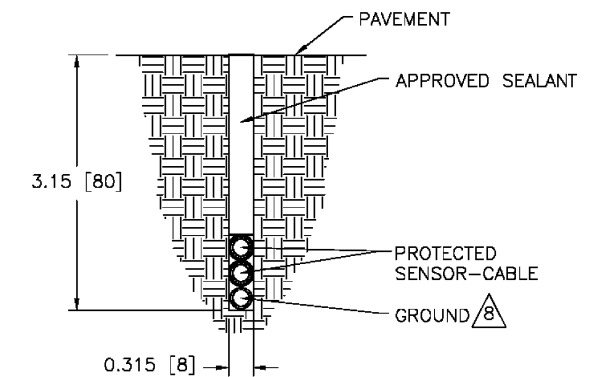
SECTION A-A



SECTION B-B



SECTION C-C



NOTES:

- 1 CRACKS OR SAW CUTS IN THE ROADWAY MUST NOT BE LOCATED CLOSER THAN 18 [450] UPSTREAM AND 18 [450] DOWNSTREAM OF THE SENSOR.
- 2 SLOT LENGTH IS 6 [152] LONGER THAN SENSOR.
- 3 SET SENSOR FLUSH WITH OR SLIGHTLY HIGHER THAN ROAD SURFACE USING INCLUDED LEVELING BEAMS.
- 4 CHECK THE RESISTANCE OF THE SENSOR BY PLACING A DIGITAL MULTIMETER ACROSS THE CENTER CONDUCTOR OF THE BNC CONNECTOR AND THE OUTER BODY. THE READING SHOULD BE INFINITY.
- 5 CHECK THE VOLTAGE OUTPUT OF THE SENSOR BY MONITORING THE METER WHEN A TRUCK PASSES OVER THE SENSOR INSTALLED IN THE ROADWAY. AS THE TRUCK PASSES OVER THE SENSOR, VOLTAGE DEFLECTION SHOULD BE OBSERVED.
- 6 FOR INSTALLATION PROCESS REFER TO MANUFACTURER'S INSTALLATION MANUAL.
- 7 SENSOR MUST BE GROUND FLUSH WITH ROAD SURFACE AFTER GROUT HAS CURED.
- 8 IF SIGNIFICANT NOISE SOURCES ARE IDENTIFIED, OVERHEAD POWER SOURCES ETC., CONNECT OPTIONAL GROUND WIRE AS PER 690359 SECTION 4.5. OTHER END OF GROUND WIRE CONNECTS TO CABINET GROUND BUSBAR.
- 9 CORE DRILL OR CUT NOTCH IN PAVED SHOULDER FOR SWEEP. PLUG SWEEP OPENING, COVER WITH LOOP SEALANT.

SENSOR INSTALLATION

MODEL: 440DELNAME1
FILE: 440delname1.dwg
PROJECT: 70E09
DRAWN: JRG
CHECKED: JRG
DATE: 8/13/2019

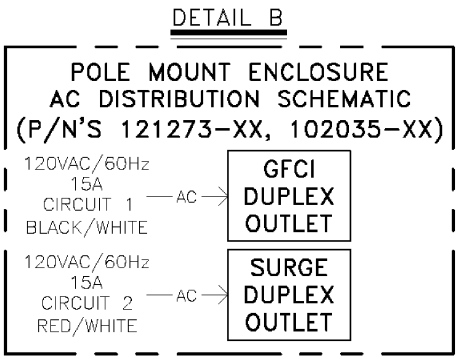
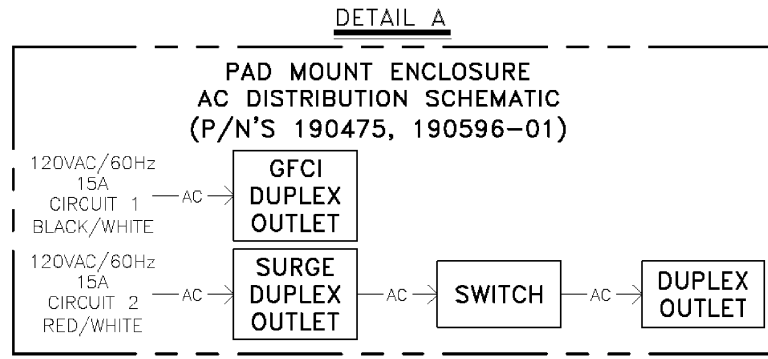
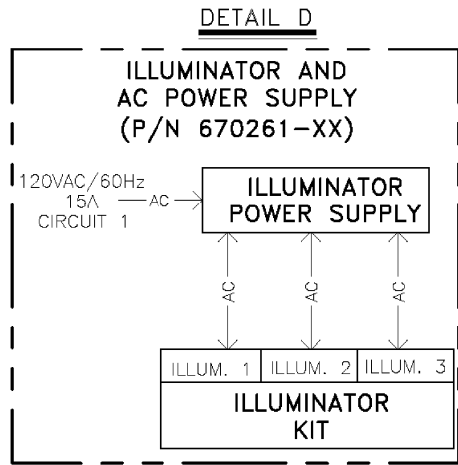
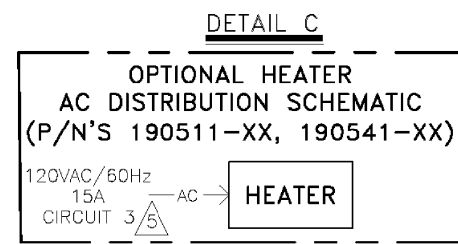
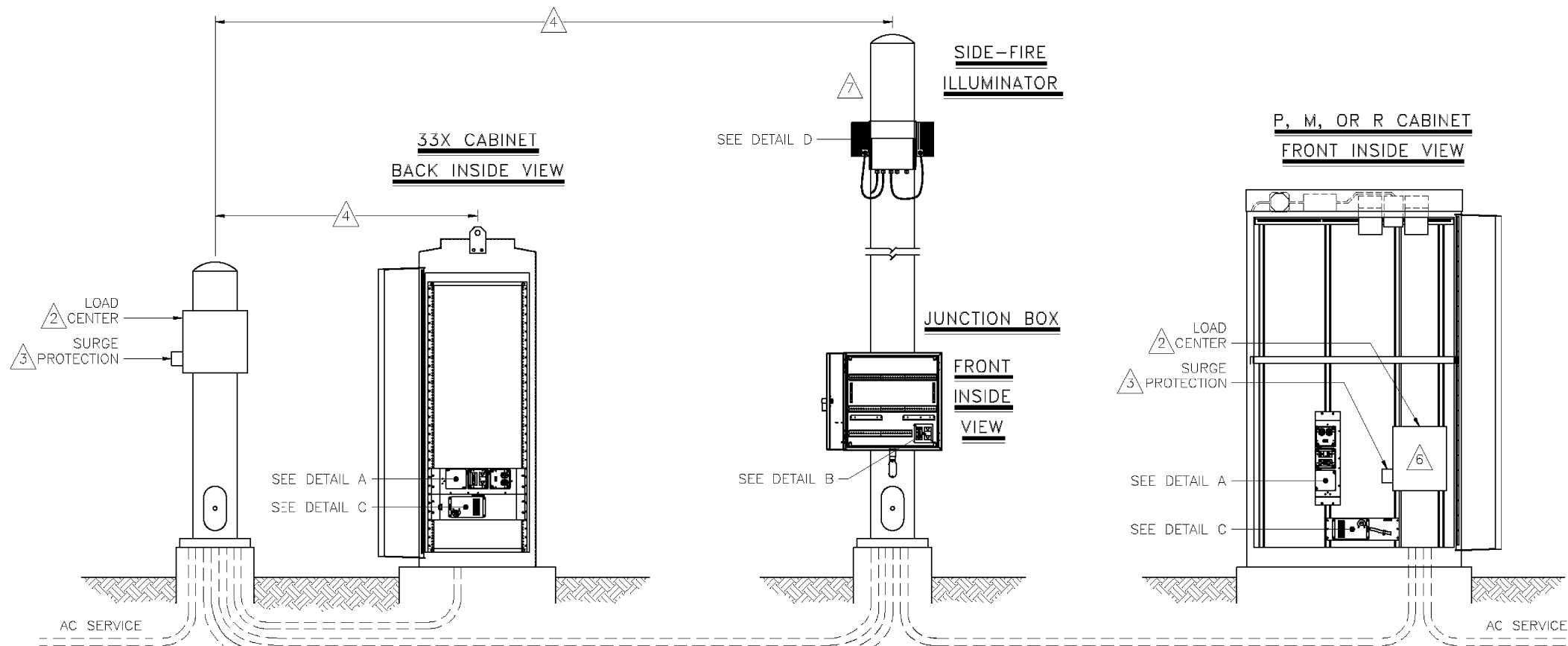
USER NAME = GobleJR	DESIGNED - JRG	REVISED -
	DRAWN - JRG	REVISED -
PLOT SCALE = 100,0000' / in.	CHECKED -	REVISED -
PLOT DATE = 8/13/2019	DATE -	REVISED -

**STATE OF ILLINOIS
DEPARTMENT OF TRANSPORTATION**

WEIGH IN MOTION DETAILS

SCALE: N-T-S SHEET 2 OF 13 SHEETS STA. TO STA.

F.A.I. RTE.	SECTION	COUNTY	TOTAL SHEETS	SHEET NO.
74	D5 WIM 2020-1	VERMILION	22	11
CONTRACT NO. 70E09				
ILLINOIS FED. AID PROJECT				



NOTES:

- 1 ALL ELECTRICAL DEVICES, GROUNDING, BONDING, WIRING AND MOUNTING MUST MEET THE CANADIAN ELECTRICAL CODE PART I AND/OR NATIONAL ELECTRICAL CODE NFPA70 AND LOCAL ELECTRICAL CODE.
- 2 PROVIDE SUITABLE INDOOR OR OUTDOOR LOAD CENTER. IRD RECOMMENDS FOR CSA USE SQUARE D P/N Q0018M100RB60 OR P/N Q02L70RB, FOR UL USE P/N Q0112M100RB OR P/N Q024L70RB OR EQUIVALENT.
- 3 EQUIPMENT MUST BE PROTECTED WITH AN ANSI/IEEE C62.41 CATEGORY C RATED PROTECTION DEVICE WITH A MINIMUM PEAK CURRENT HANDLING CAPABILITY OF 36KA (8/20μS) INSTALLED AT THE LOAD CENTER OR SUB LOAD CENTER.
- 4 30m MAXIMUM CABLE LENGTH BETWEEN CATEGORY C PROTECTOR AND ENCLOSURE(S).
- 5 CIRCUIT 3 OPTIONAL DEPENDING ON PRESENCE OF HEATER.
- 6 LOAD CENTER MAY BE LOCATED INSIDE ENCLOSURE WHERE SPACE PERMITS.
- 7 REFER TO PRODUCT DOCUMENTATION FOR OEM EQUIPMENT NOT SHOWN.

**120VAC CABINET POWER INSTALLATION
AND LOAD CENTER DETAIL**

MODEL: 440DELMAINETS
FILE NAME: P:\Submittals\70E09\Drawings\70E09-05-Details.dgn

USER NAME = GobleJR	DESIGNED - JRG	REVISED -
	DRAWN - JRG	REVISED -
PLOT SCALE = 100.0000' / in.	CHECKED -	REVISED -
PLOT DATE = 8/13/2019	DATE -	REVISED -

STATE OF ILLINOIS
DEPARTMENT OF TRANSPORTATION

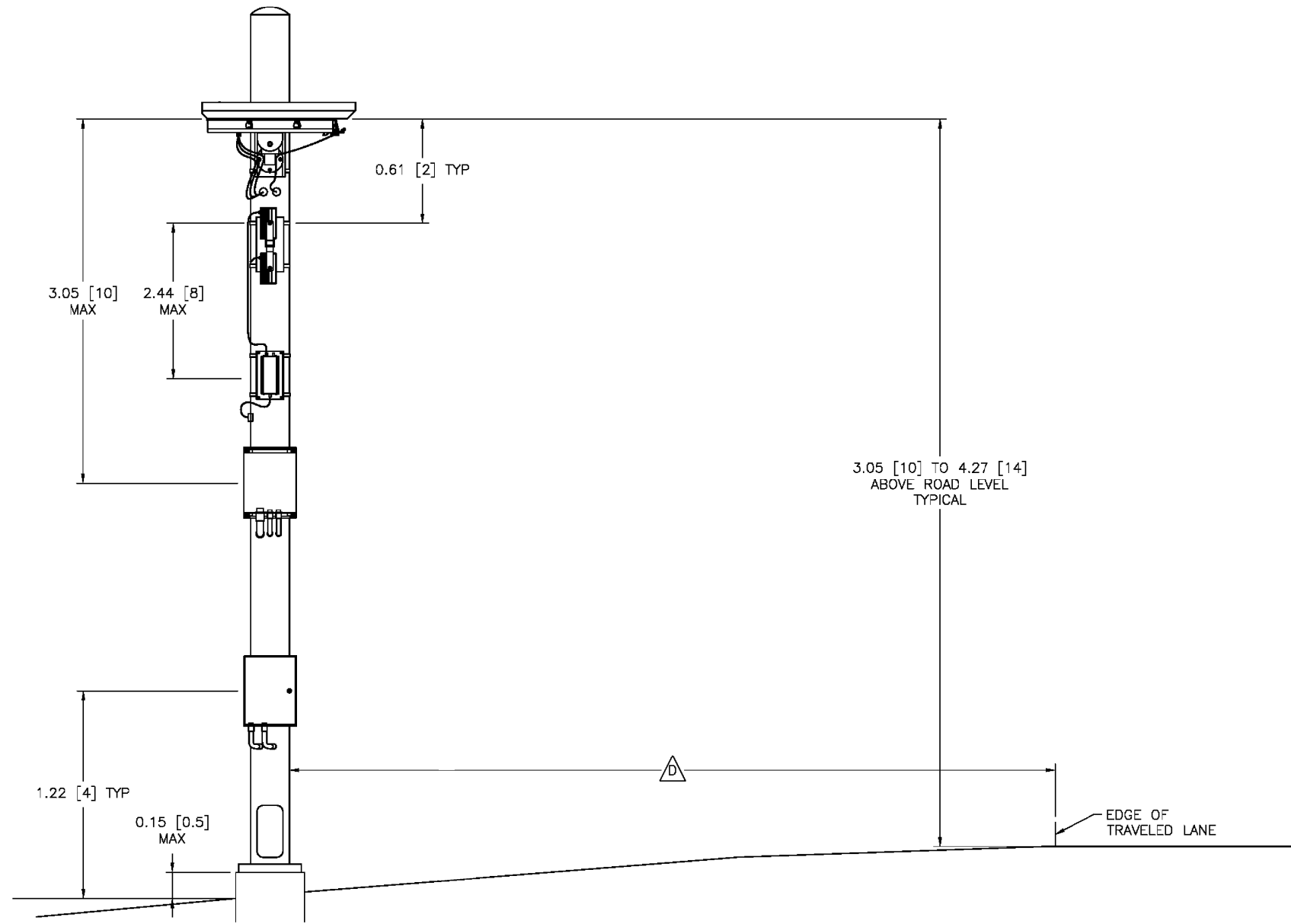
WEIGH IN MOTION DETAILS

SCALE: N-T-S SHEET 5 OF 13 SHEETS STA. TO STA.

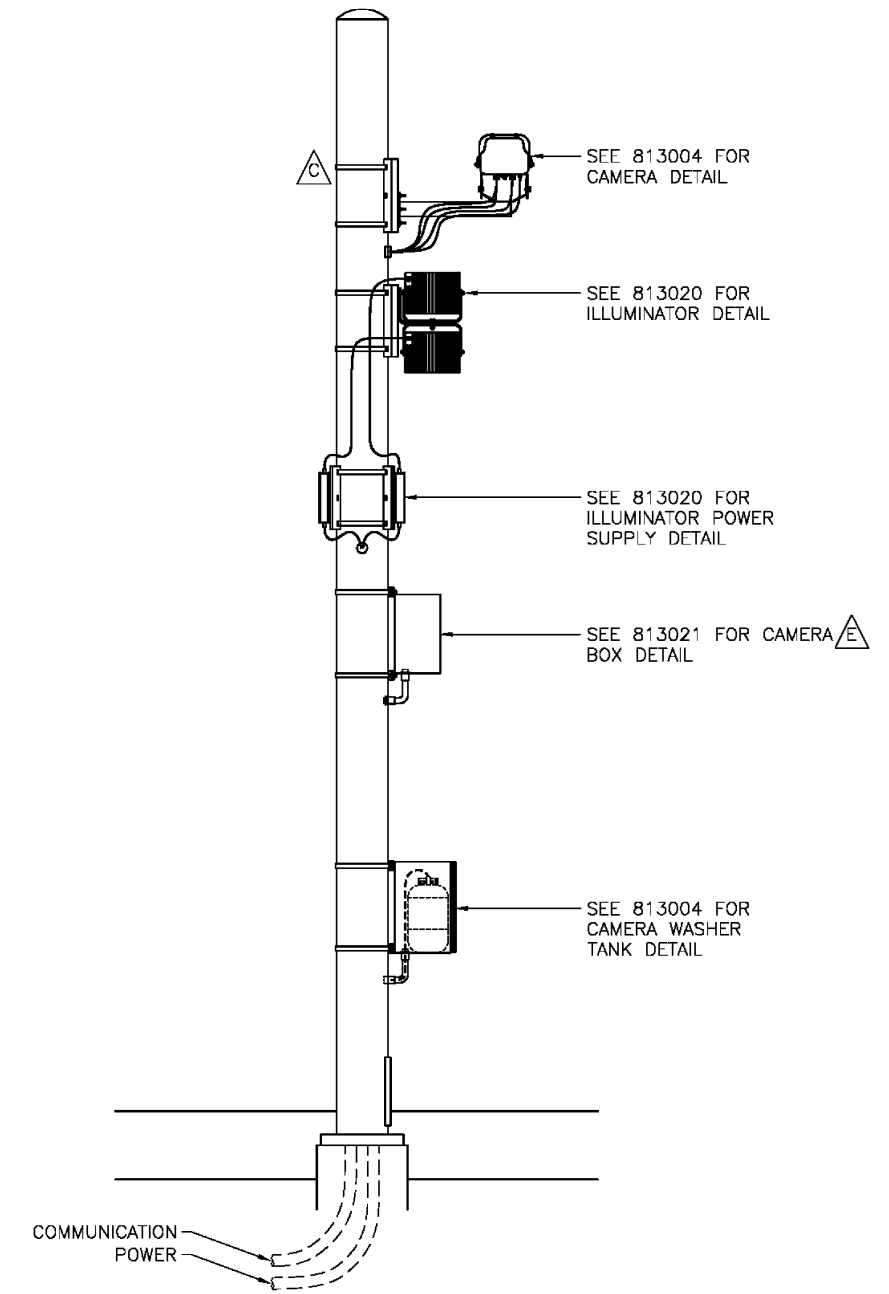
F.A.I. RTE.	SECTION	COUNTY	TOTAL SHEETS	SHEET NO.
74	D5 WIM 2020-1	VERMILION	22	14
CONTRACT NO. 70E09				
ILLINOIS FED. AID PROJECT				

RF/SIDE FIRE CAMERA/POLE

VIEW FACING UPSTREAM



VIEW FACING ROADWAY



NOTES: (THIS SHEET ONLY)

- A POLE AND FOUNDATION DESIGN MAY REQUIRE REVIEW BY LOCAL PROFESSIONAL ENGINEER.
- B CONDUITS TO MEET LOCAL ELECTRIC CODE.
- C** CONTRACTOR TO SUPPLY 3/4" STAINLESS STEEL BANDING FOR ATTACHING EQUIPMENT.
- D** POLE LOCATION MUST ALLOW ADEQUATE RIGHT-OF-WAY OR PROTECT WITH GUIDERAIL OR USE OF BREAK-AWAY POLE AS REQUIRED BY LOCAL CONSTRUCTION CODES.
- E** CAMERA BOX FOR FIBER OPTIC COMMUNICATION REQUIRED WHERE CABLE RUN TO WIM CABINET EXCEEDS 75m [246ft].

**SITE LAYOUT
SIDE FIRE CAMERA WITH ILLUMINATOR**

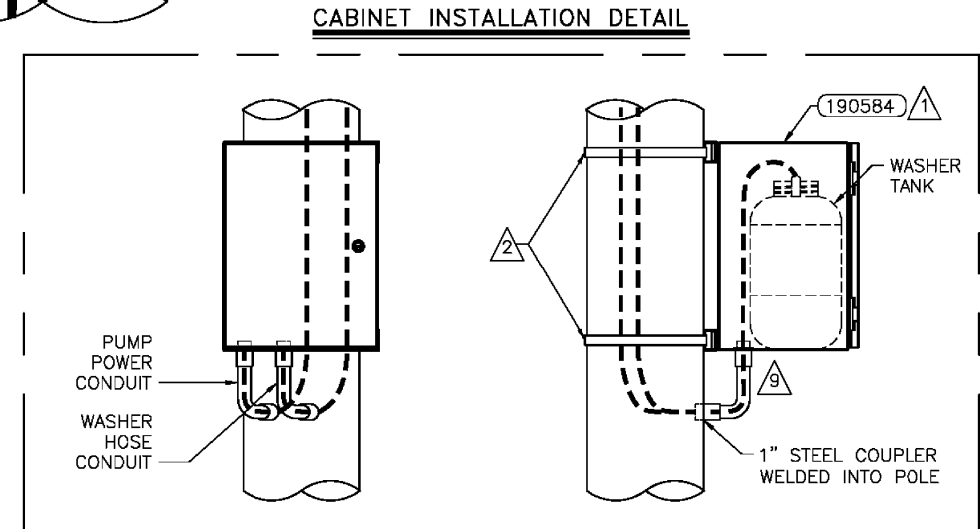
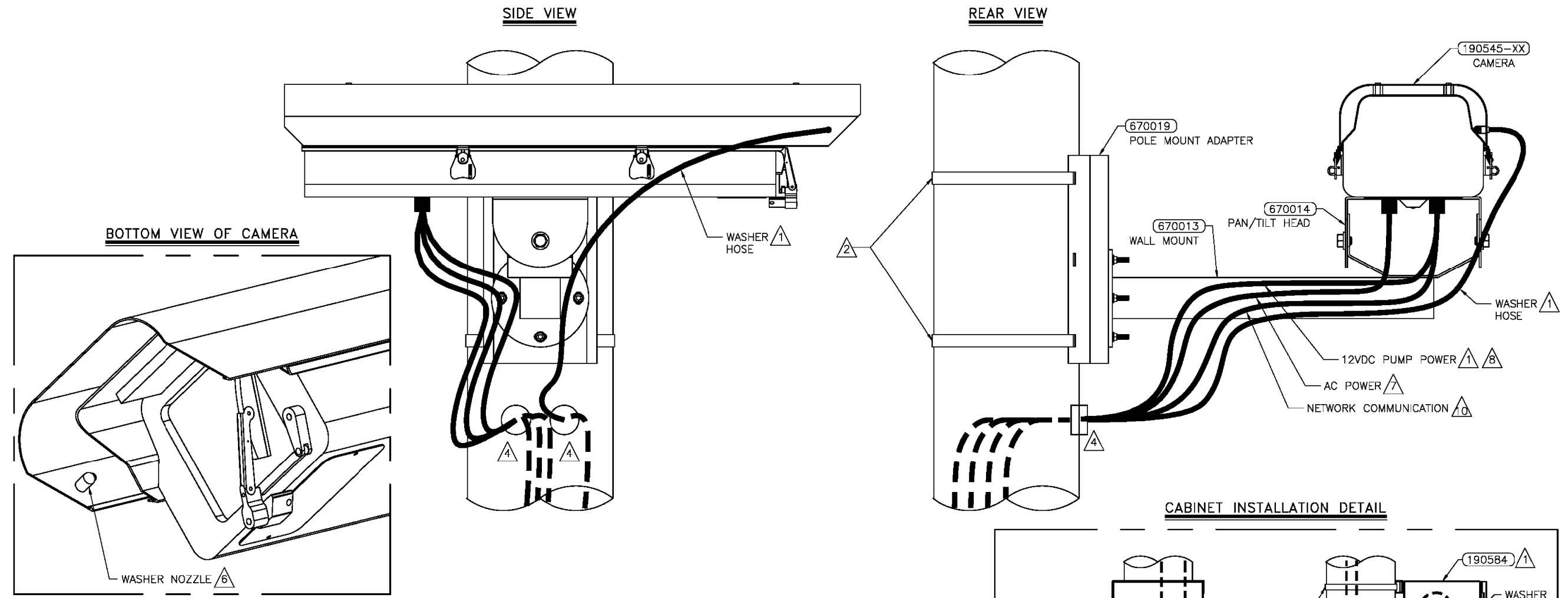
MODEL: I:\MODEL\NAME: FILE: NAME: P:\pub\mcom\mcom\illinois\gov\p\WID\DOT\Documents\DOT Office\Detail\c 5\Projects\0570E09\CADDData\CAD\Sheet\0570E09-01-Details.dgn

USER NAME = GobleJR	DESIGNED - JRG	REVISED -
	DRAWN - JRG	REVISED -
PLOT SCALE = 100.0000 ' / in.	CHECKED -	REVISED -
PLOT DATE = 8/13/2019	DATE -	REVISED -

**STATE OF ILLINOIS
DEPARTMENT OF TRANSPORTATION**

WEIGH IN MOTION DETAILS	
SCALE: N-T-S	SHEET 6 OF 13 SHEETS STA. TO STA.

F.A.I. RTE.	SECTION	COUNTY	TOTAL SHEETS	SHEET NO.
74	D5 WIM 2020-1	VERMILION	22	15
CONTRACT NO. 70E09				
ILLINOIS FED. AID PROJECT				



**NETWORK SFC – SIDE OF POLE
CVO STANDARD SYSTEM**

NOTES:

- 1 WIPER AND WASHER TANK ASSEMBLY ARE OPTIONAL COMPONENTS INCLUDED WITH CAMERA. ENSURE WASHER HOSE IS FREE OF ANY KINKS FOR FULL LENGTH.
- 2 BAND BRACKET TO POLE WITH 0.75" (20mm) STAINLESS STEEL STRAPPING. MINIMUM 3.5" (84mm) POLE DIAMETER.
- 3 CAMERA AND BRACKET WEIGHT: 25.4lbs [16.1kg]
- 4 REFER TO 81303501 FOR CABLE POLE ENTRY DETAIL.
- 5 WASHER TANK WEIGHT: 47.2lbs [21.4kg]
- 6 ADJUST SPRAYER NOZZLE (IF PRESENT) TO DIRECT SPRAY SLIGHTLY BELOW CENTER OF THE CAMERA ENCLOSURE WINDOW.
- 7 SEE 81300907 OR 81300911 FOR SECONDARY ENCLOSURE AC POWER DETAIL. MAXIMUM POWER CONSUMPTION IS 150W WITH WASHER/WIPER AND 110W WITHOUT.
- 8 WHITE AND BLACK PUMP POWER WIRES OF PUMP POWER CABLE ARE TERMINATED INSIDE CAMERA ENCLOSURE AT TERMINAL BLOCKS LABELED "1" AND "2" RESPECTIVELY.
- 9 INSTALL 1" LIQUIDTITE CONDUIT INCLUDED WITH P/N 190584 NEAR THE BACK OF THE ENCLOSURE TO ALLOW INSERTION OF TANK.
- 10 USE ETHERNET SURGE ARRESTOR WHEN CONNECTING NETWORK COMMUNICATION AT ISINC CABINET.

MODEL: 4-MODELNAME
 FILE NAME: P:\pub\mcom\ad\illinois\gov\p\WID\DOT\Documents\DOT Office\Detail\ 5\Project\0570E09\CADData\CADReferences\0570E09-enc-Detail.dgn

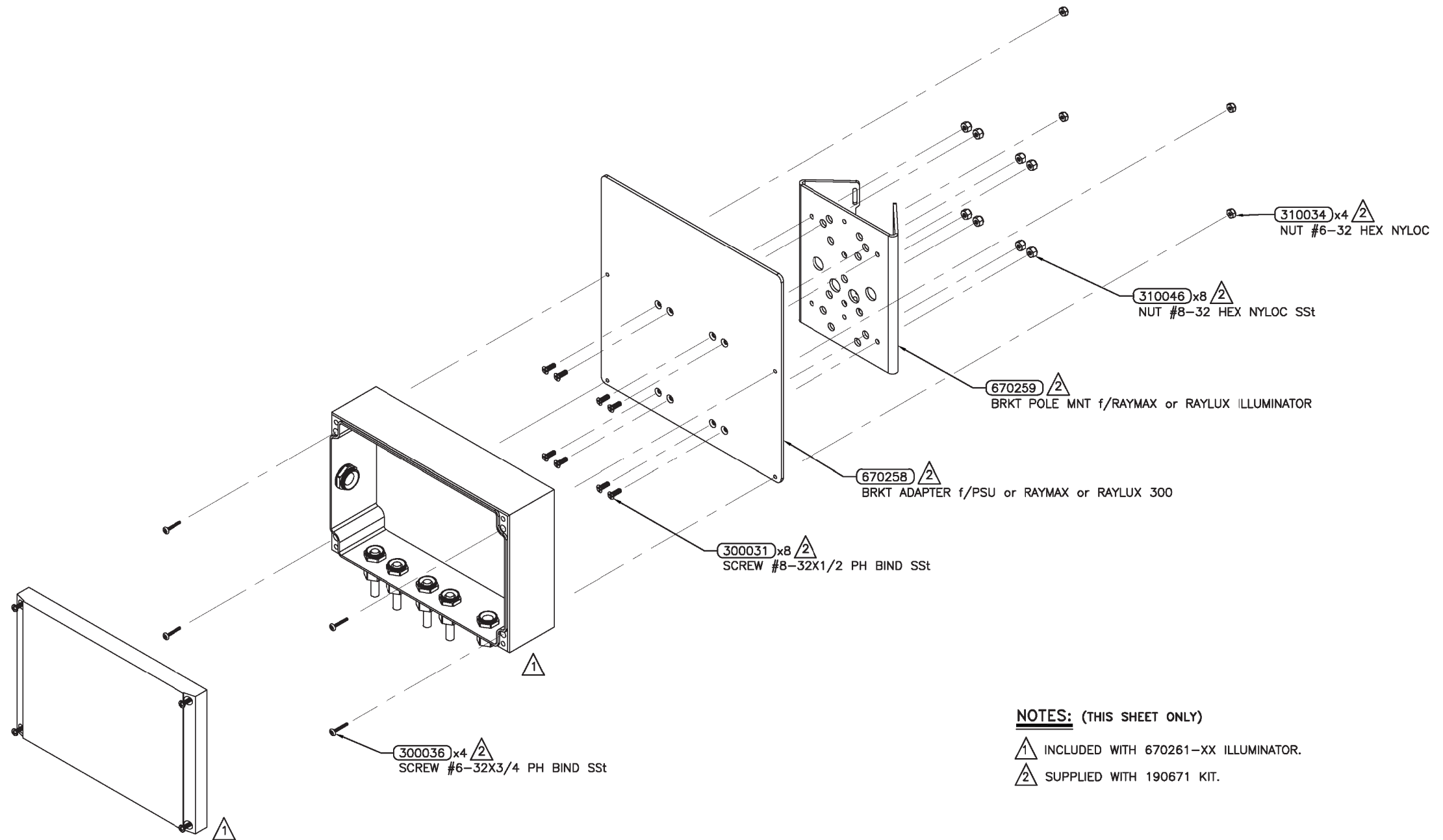
USER NAME = GobleJR	DESIGNED - JRG	REVISED -
	DRAWN - JRG	REVISED -
PLOT SCALE = 100,0000' / in.	CHECKED -	REVISED -
PLOT DATE = 8/13/2019	DATE -	REVISED -

**STATE OF ILLINOIS
DEPARTMENT OF TRANSPORTATION**

WEIGH IN MOTION DETAILS
 SCALE: N-T-S SHEET 8 OF 13 SHEETS STA. TO STA.

F.A.I. RTE.	SECTION	COUNTY	TOTAL SHEETS	SHEET NO.
74	D5 WIM 2020-1	VERMILION	22	17
CONTRACT NO. 70E09				
ILLINOIS FED. AID PROJECT				

STEP 1 - ASSEMBLE POWER SUPPLY TO ADAPTER PLATE 670258 AND POLE MOUNT BRACKET 670259



NOTES: (THIS SHEET ONLY)

- ① INCLUDED WITH 670261-XX ILLUMINATOR.
- ② SUPPLIED WITH 190671 KIT.

**RAYTEC VARIABLE ANGLE
CVO SF ILLUMINATOR**

MODEL: 4100ELM1M1E
 FILE: 4100ELM1M1E.dwg
 PROJECT: 70E09
 DRAWING: 70E09-01-DETAILS.DWG
 DATE: 8/13/2019

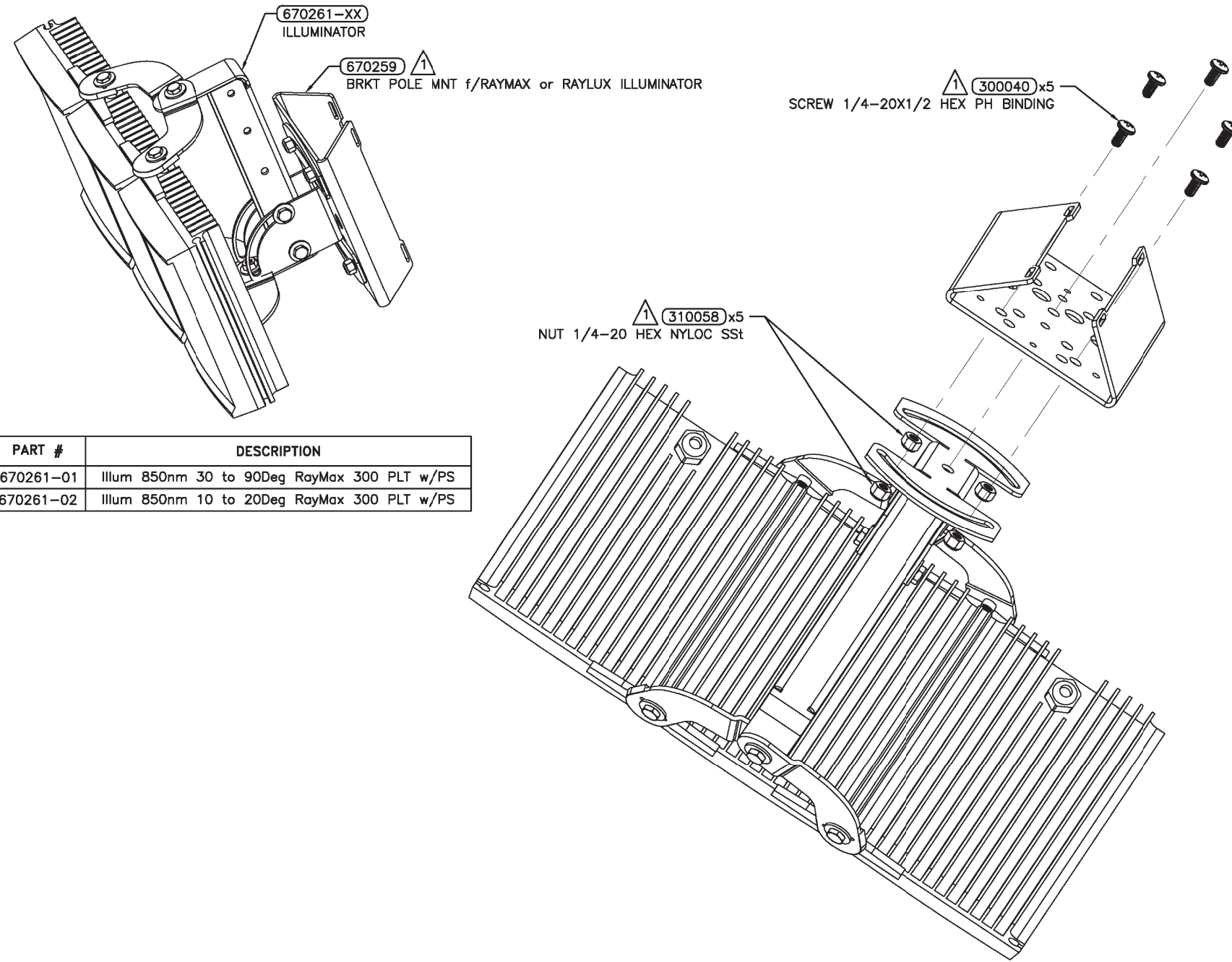
USER NAME = GobleJR	DESIGNED - JRG	REVISED -
	DRAWN - JRG	REVISED -
PLOT SCALE = 100.0000 ' / in.	CHECKED -	REVISED -
PLOT DATE = 8/13/2019	DATE -	REVISED -

**STATE OF ILLINOIS
DEPARTMENT OF TRANSPORTATION**

WEIGH IN MOTION DETAILS	
SCALE: N-T-S	SHEET 9 OF 13 SHEETS STA. TO STA.

F.A.I. RTE.	SECTION	COUNTY	TOTAL SHEETS	SHEET NO.
74	D5 WIM 2020-1	VERMILION	22	18
CONTRACT NO. 70E09				
ILLINOIS FED. AID PROJECT				

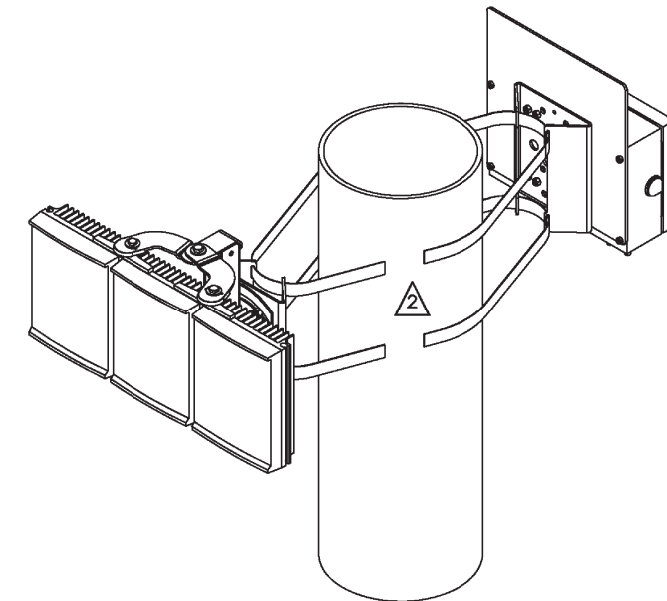
STEP 2 – ASSEMBLE ILLUMINATOR TO POLE MOUNT BRACKET 670259



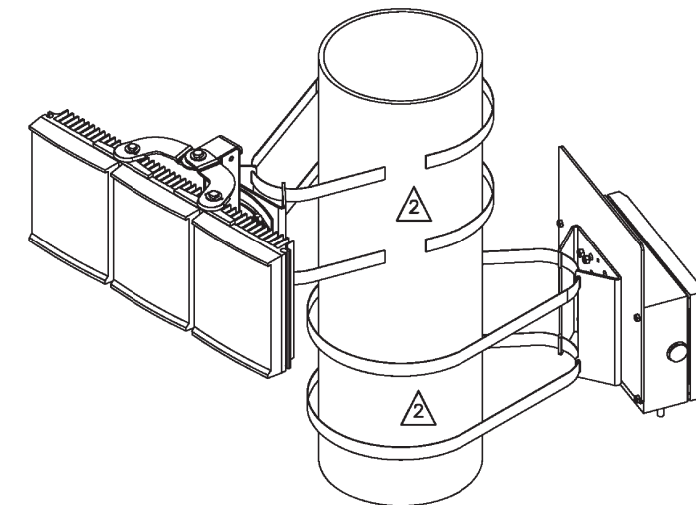
PART #	DESCRIPTION
670261-01	Illum 850nm 30 to 90Deg RayMax 300 PLT w/PS
670261-02	Illum 850nm 10 to 20Deg RayMax 300 PLT w/PS

STEP 3 – MOUNT ASSEMBLIES TO POLE TO SUIT SITE CONDITIONS

**STEP 3A – ASSEMBLIES ON POLE USING SAME BANDING
ORIENT ANGLE TO EACH OTHER AS REQUIRED**



**STEP 3B – ORIENT ASSEMBLIES ON POLE AT DIFFERENT ELEVATIONS
ANGLE EACH ASSEMBLY ON POLE AS REQUIRED**



**RAYTEC VARIABLE ANGLE
CVO SF ILLUMINATOR**

NOTES: (THIS SHEET ONLY)

- 1 SUPPLIED WITH 190671 KIT.
- 2 USE 1/2" STAINLESS STEEL BANDING AND BUCKLES OR MOUNTING BRACKET ON THE POLE. REFER TO BRACKET INSTALLATION INSTRUCTIONS AND LOCAL CODE FOR REQUIREMENTS.

MODEL: 440DEL\MAR15
 FILE: 440del_mmts_150418mmts.dwg
 S:\Projects\0570E09\CADDData\CAD\Projects\0570E09-htc-Detail.dwg

USER NAME = GobleJR	DESIGNED - JRG	REVISED -
	DRAWN - JRG	REVISED -
PLOT SCALE = 100.0000' / in.	CHECKED -	REVISED -
PLOT DATE = 8/13/2019	DATE -	REVISED -

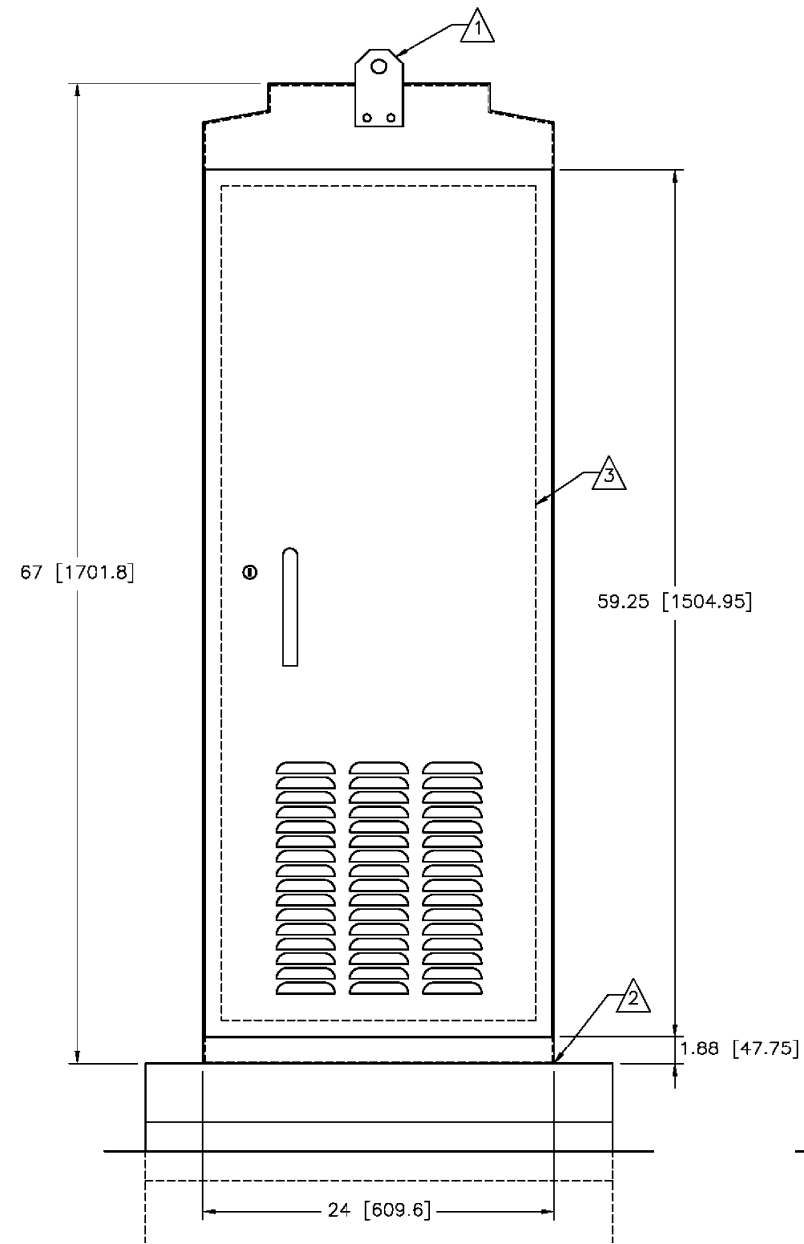
**STATE OF ILLINOIS
DEPARTMENT OF TRANSPORTATION**

WEIGH IN MOTION DETAILS

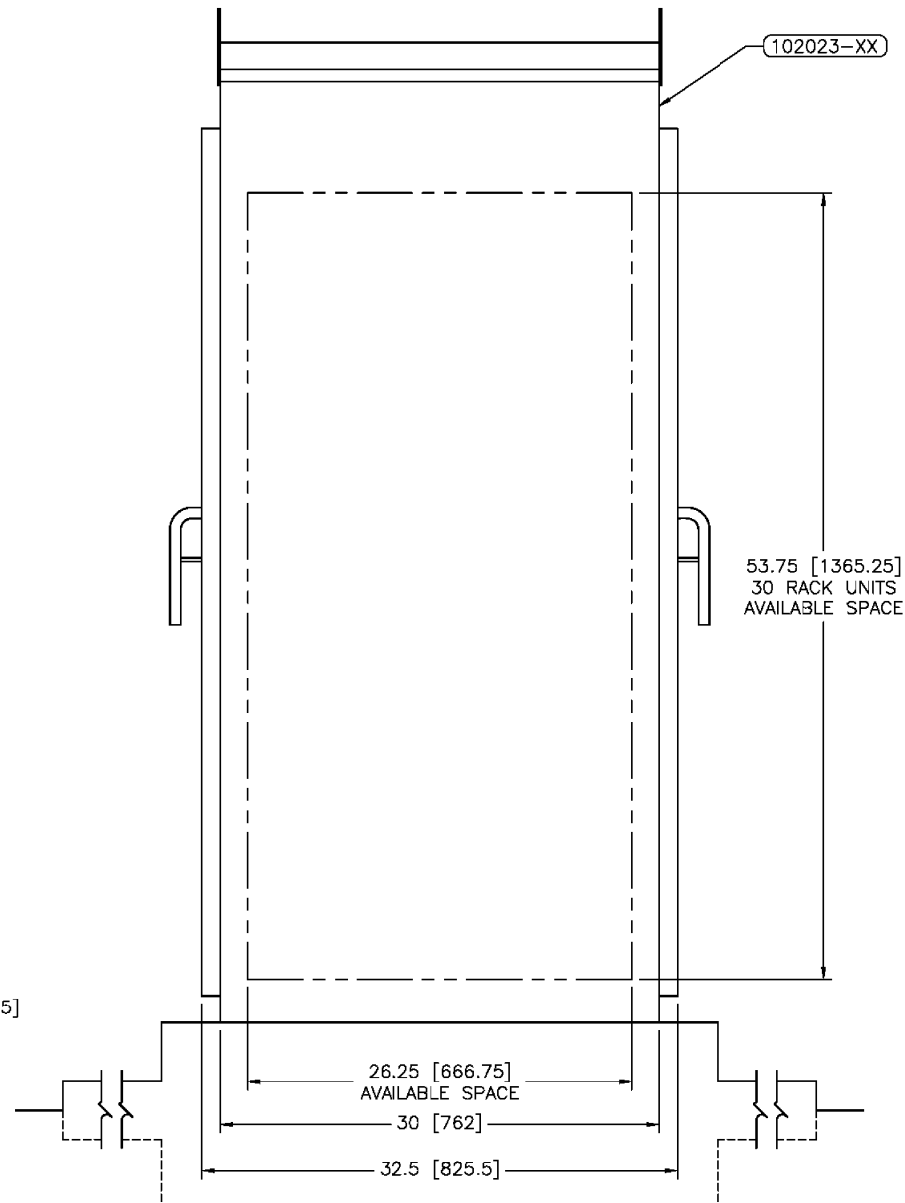
SCALE: N-T-S SHEET 10 OF 13 SHEETS STA. TO STA.

F.A.I. RTE.	SECTION	COUNTY	TOTAL SHEETS	SHEET NO.
74	D5 WIM 2020-1	VERMILION	22	19
				CONTRACT NO. 70E09
ILLINOIS FED. AID PROJECT				

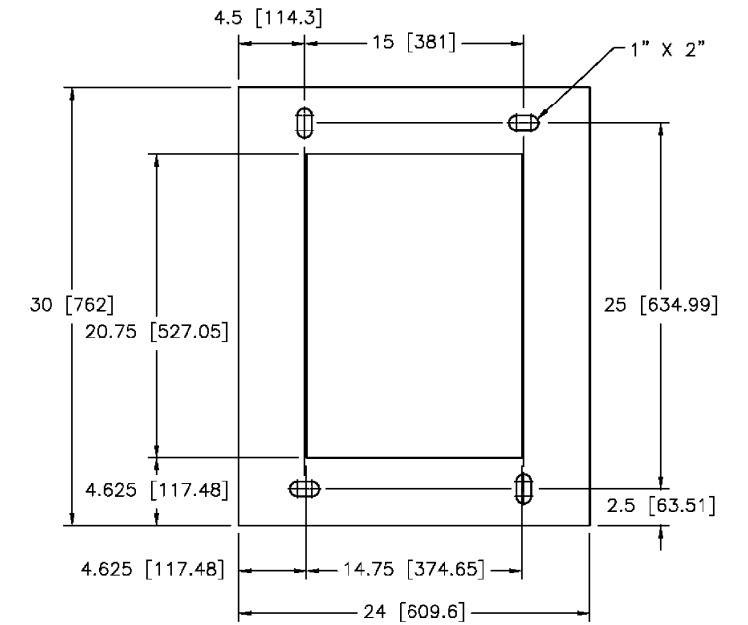
FRONT VIEW



SIDE VIEW



PAD MOUNTING PATTERN



NOTES:

- 1 LIFTING EYE. MAY BE UNBOLTED AND ROTATED 180° FOR STORAGE.
- 2 SEAL CABINET TO FOUNDATION JOINT WITH SILICONE SEALANT TO PREVENT WATER INTRUSION. LOCATE CABINET ABOVE HIGH WATER LEVEL.
- 3 REMOVABLE 19" EIA RACK.

CABINET INSTALLATION

MODEL: 4-MODELNAME
 FILE: 4-NAME.dwg
 PROJECT: 4-PROJECTNAME
 DATE: 8/13/2019

USER NAME = GobleJR	DESIGNED - JRG	REVISED -
PLOT SCALE = 100.0000' / in.	DRAWN - JRG	REVISIED -
PLOT DATE = 8/13/2019	CHECKED -	REVISIED -
	DATE -	REVISIED -

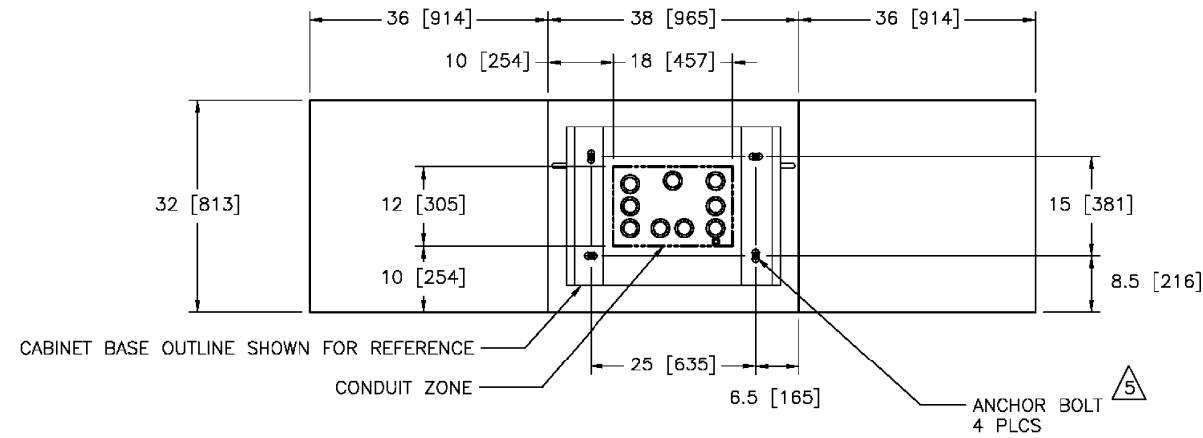
**STATE OF ILLINOIS
DEPARTMENT OF TRANSPORTATION**

WEIGH IN MOTION DETAILS

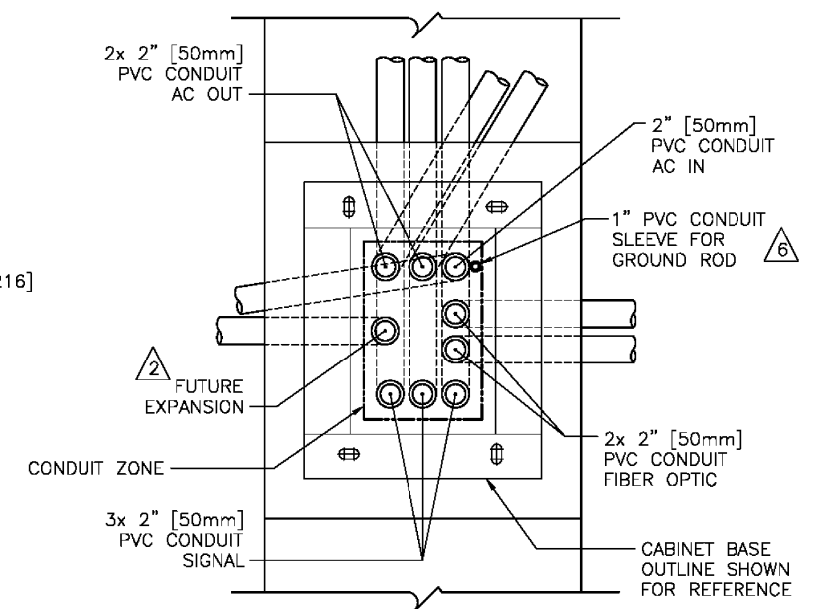
SCALE: N-T-S SHEET 11 OF 13 SHEETS STA. TO STA.

F.A.I. RTE.	SECTION	COUNTY	TOTAL SHEETS	SHEET NO.
74	D5 WIM 2020-1	VERMILION	22	20
CONTRACT NO. 70E09				
ILLINOIS FED. AID PROJECT				

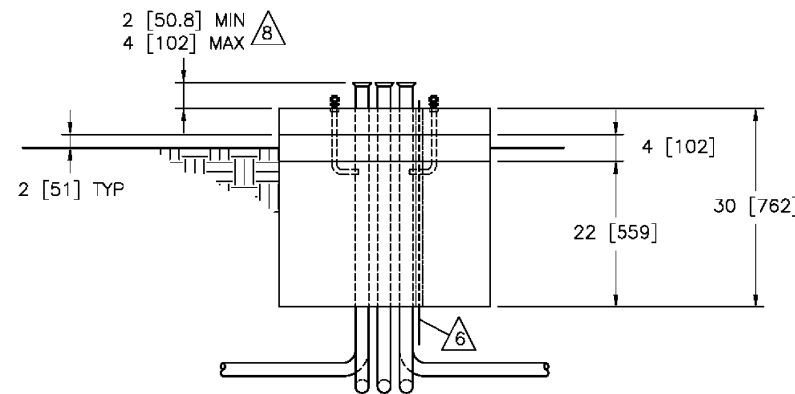
TOP VIEW – CABINET MOUNTING



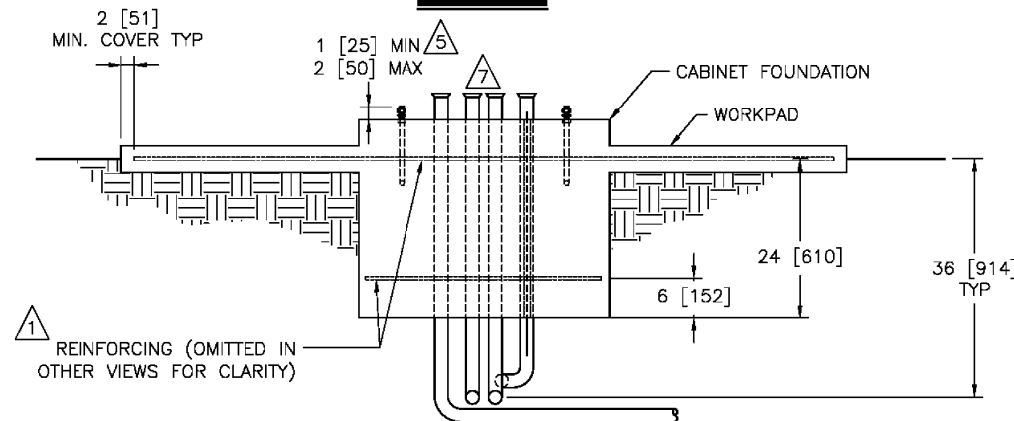
DETAIL A – MINIMUM CONDUITS ³



FRONT VIEW



SIDE VIEW



NOTES:

- 1 INSTALL REINFORCING MATS. #4 [12M] BAR 12" [300mm] ON CENTER EACH WAY. EPOXY COAT OR GALVANIZE. REINFORCEMENTS ARE MINIMUM REQUIREMENTS AND MAY BE SUPERSEDED BY LOCAL CONSTRUCTION CODES.
- 2 SPARE CONDUIT MUST BE CAPPED, STUBBED 24" [600mm] PAST FOUNDATION, AND LABELED.
- 3 ALL CONDUITS SHOWN SHALL BE FURNISHED AND INSTALLED IN FOUNDATION IN ACCORDANCE WITH LOCAL CODES. CAP IF NOT USED. ADDITIONAL CONDUITS MAY BE REQUIRED. CONDUITS SHALL EXIT FOUNDATION IN DIRECTION APPROPRIATE FOR SITE GEOMETRY.
- 4 CONCRETE SHALL HAVE COMPRESSIVE STRENGTH OF 3000 PSI [20.7 MPa] MINIMUM.
- 5 CABINET ANCHORS MUST BE GALVANIZED OR STAINLESS STEEL AND MAY BE CAST IN PLACE, CHEMICAL OR EXPANSION TYPE DRILLED INTO BASE. TYPICAL SIZE IS 3/4" NC x 12" x 4".
- 6 GROUND ROD MUST BE PROVIDED TO MEET LOCAL ELECTRICAL CODE.
- 7 SEAL ALL CONDUIT ENDS WITH STEEL WOOL AND DUCT SEAL TO REDUCE RODENT OR INSECT INTRUSION AND MOISTURE. DO NOT USE PERMANENT SEALANT AS CONDUITS MAY NEED TO BE REENTERED IN THE FUTURE FOR CABLE REPLACEMENT OR ADDITIONS.

NOTES: (CONTINUED)

- 8 THE CABINET BASE CONDUIT MUST BE HIGHER THAN SURROUNDING PULL BOXES. THE HEIGHT OF CONDUITS ENDING IN THE CABINET MUST BE HIGHER THAN THE OTHER END TO PREVENT WATER ENTRY DUE TO HYDROSTATIC PRESSURE. ALL CONDUITS SHALL HAVE END BELLS INSTALLED OR NO SHARP EDGES.

CABINET FOUNDATION INSTALLATION

STATE OF ILLINOIS
DEPARTMENT OF TRANSPORTATION

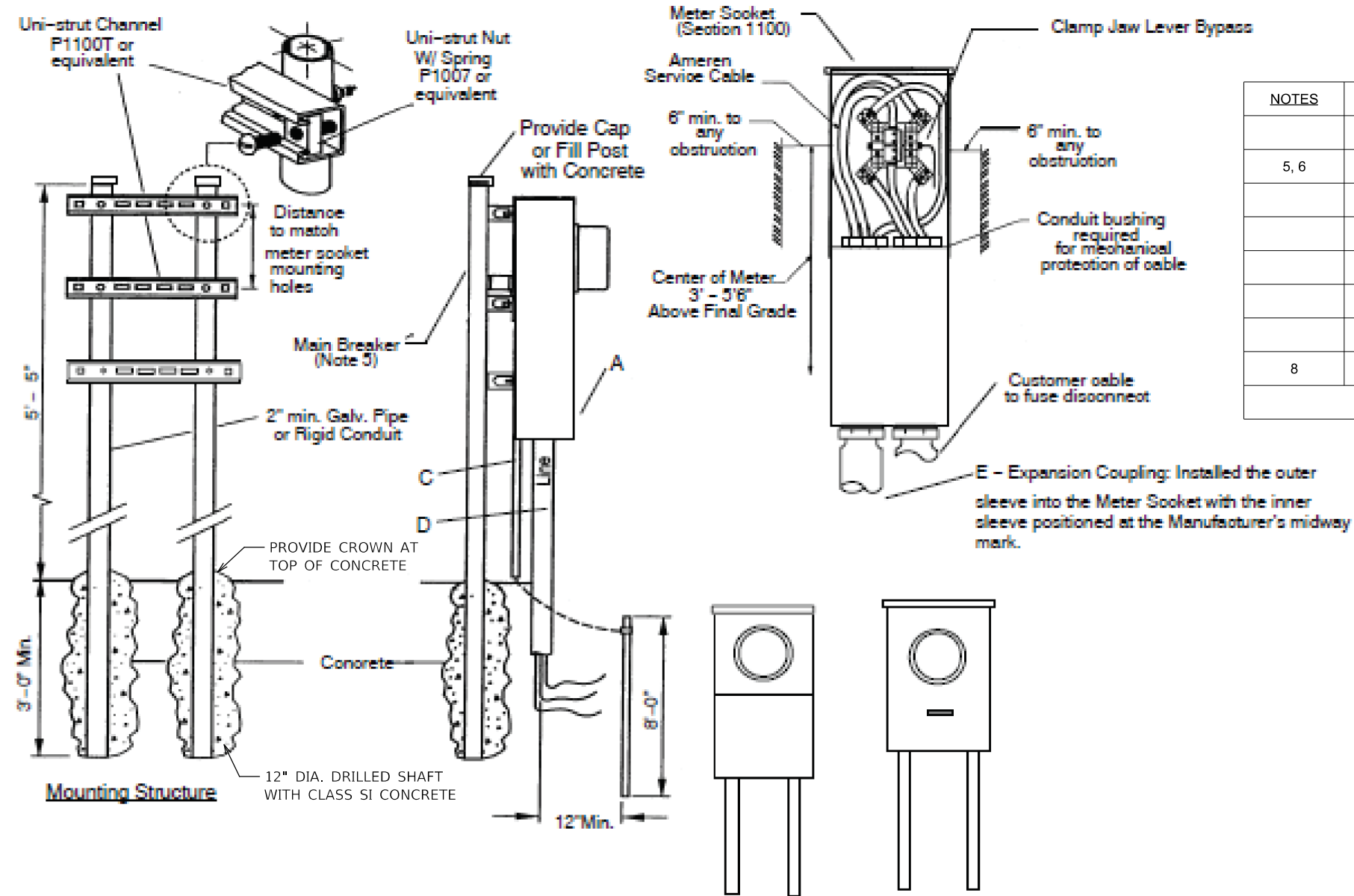
WEIGH IN MOTION DETAILS

SCALE: N-T-S SHEET 12 OF 13 SHEETS STA. TO STA.

F.A.I. RTE.	SECTION	COUNTY	TOTAL SHEETS	SHEET NO.
74	D5 WIM 2020-1	VERMILION	22	21
CONTRACT NO. 70E09				
ILLINOIS FED. AID PROJECT				

MODEL: 410001.MXD FILE: 410001.dwg PROJECT: 70E09.CADDATA\CADD\PROJECTS\70E09-CH-Details.dwg

NOTE: COST INCLUDED IN SERVICE INSTALLATION, TYPE A (MODIFIED)



NOTES		DESCRIPTION
5, 6	A	METER SOCKET, CLAMP JAW LEVER BYPASS
	C	1/2 INCH PVC CONDUIT
	D	CONDUIT - ELECTRICAL GRADE SCHEDULE 80 PVC
8	E	EXPANSION COUPLING, SCHEDULE 40 PVC, 8 INCH FALL

NOTES: AMEREN ELECTRIC REQUIREMENTS

- 1 The installation of all entrance equipment, conductors and conduit shall conform to local codes or the latest NEC requirements.
- 2 All material shall be furnished and installed by Contractor.
- 3 NEC approved ground required.
- 4 Different arrangements of the service equipment (fuse/breaker box) may be used side-by-side or below meter.
- 5 Refer to Ameren Section 1100 for meter sockets or combo units requirement.
- 6 Instrument rated meter sockets in IL: stock# 4054378 - 8 terminal and stock# 4054353 - 13 terminal
- 7 Refer to Ameren Section 200 for meter mounting height.
- 8 When an expansion coupling is required, it should be installed so that the outer sleeve into the meter socket with the inner sleeve positioned at the Manufacturer's midway mark.

**UNDERGROUND METER SERVICE / LOAD CENTER
AMEREN ELECTRIC METER REQUIREMENTS**

MODEL: 440DEL.MXMTS
FILE: 440del.mxts
S:\projects\0570E09\CADDData\CAD\Sheet\0570E09-eh-Details.dgn

USER NAME = GobleJR	DESIGNED - JRG	REVISED -
	DRAWN - JRG	REVISED -
PLOT SCALE = 100,0000' / in.	CHECKED -	REVISED -
PLOT DATE = 8/13/2019	DATE -	REVISED -

STATE OF ILLINOIS
DEPARTMENT OF TRANSPORTATION

WEIGH IN MOTION DETAILS	
SCALE: N-T-S	SHEET 13 OF 13 SHEETS STA. TO STA.

F.A.I. RTE.	SECTION	COUNTY	TOTAL SHEETS	SHEET NO.
74	D5 WIM 2020-1	VERMILION	22	22
CONTRACT NO. 70E09				
ILLINOIS FED. AID PROJECT				